

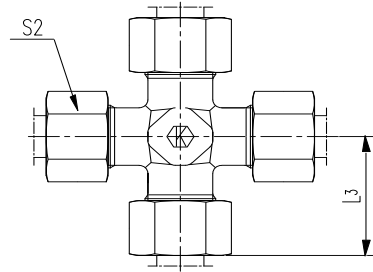
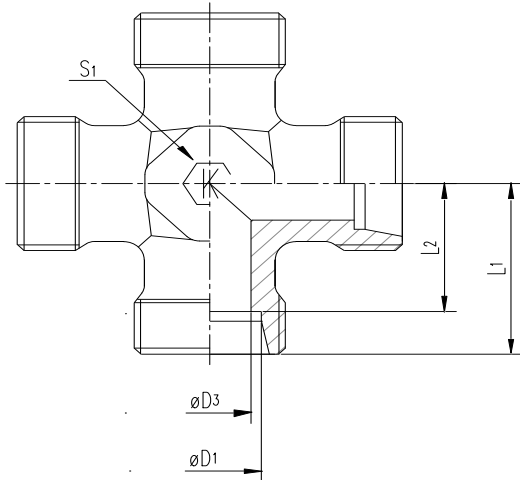
K Union cross - 24° cone end

K Kreuz-Stutzen - 24° Anschluss

PREMOEM
PREMIUM HYDRAULIC SOLUTIONS - GERMANY

Order code without nut and cutting ring
XK....(X124...)

Order code with nut and cutting ring
K....(124...)



Series	Tube ØD1	D3	L1	L2	L3	S1	S2	Weight g/1 piece	ITEM CODE	ITEM NAME	PN (bar)
LL DB	4	3.0	15	11.0	21	9	10	13	124100404	K 04 LL	100
	6	4.5	15	9.5	21	9	12	14	124100606	K 06 LL	100
	8	6.0	17	11.5	23	12	14	24	124100808	K 08 LL	100
L NB	6	4.0	19	12.0	27	12	14	35	124200606	K 06 L	315
	8	6.0	21	14.0	29	12	17	40	124200808	K 08 L	315
	10	8.0	22	15.0	30	14	19	52	124201010	K 10 L	315
	12	10.0	24	17.0	32	17	22	69	124201212	K 12 L	315
	15	12.0	28	21.0	36	19	27	130	124201515	K 15 L	315
	18	15.0	31	23.5	40	24	32	188	124201818	K 18 L	315
	22	19.0	35	27.5	44	27	36	251	124202222	K 22 L	160
	28	24.0	38	30.5	47	36	41	392	124202828	K 28 L	160
	35	30.0	45	34.5	56	41	50	618	124203535	K 35 L	160
	42	36.0	51	40.0	63	50	60	905	124204242	K 42 L	160
S YB	6	4.0	23	16.0	31	12	17	58	124300606	K 06 S	630
	8	5.0	24	17.0	32	14	19	82	124300808	K 08 S	630
	10	7.0	25	17.5	34	17	22	97	124301010	K 10 S	630
	12	8.0	29	21.5	38	17	24	146	124301212	K 12 S	630
	14	10.0	30	22.0	40	19	27	176	124301414	K 14 S	630
	16	12.0	33	24.5	43	24	30	220	124301616	K 16 S	400
	20	16.0	37	26.5	48	27	36	339	124302020	K 20 S	400
	25	20.0	42	30.0	54	36	46	576	124302525	K 25 S	400
	30	25.0	49	35.5	62	41	50	843	124303030	K 30 S	400
	38	32.0	57	41.0	72	50	60	1350	124303838	K 38 S	315

LL= very light series

L= light series

S= heavy series

$\frac{\text{PN (bar)}}{10} = \text{PN (MPa)}$

Zinc plated=Cr(VI)-free