

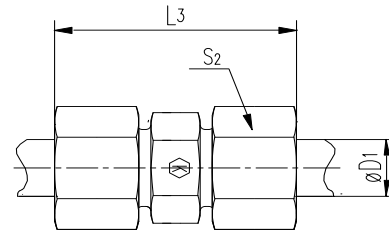
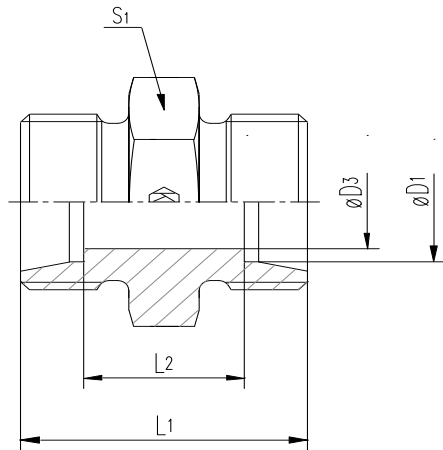
G Union - 24° cone end

G Gerader Stutzen 24°-Anschluss

PREMOEM
PREMIUM HYDRAULIC SOLUTIONS - GERMANY

Order code without nut and cutting ring
XN...(X121....)

Order code with nut and cutting ring
N...(121....)



Series	Tube	D3	L1	L2	L3	S1	S2	Weight g/1 piece	ITEM CODE	ITEM NAME	PN (bar)
	ØD1										
LL DB	4	3.0	20	12	31	9	10	5	121100404	G 04 LL	100
	6	4.5	20	9	32	11	12	7	121100606	G 06 LL	100
	8	6.0	23	12	35	12	14	10	121100808	G 08 LL	100
	10	8.0	23	12	35	14	17	13	121101010	G 10 LL	100
	12	10.0	23	11	35	17	19	16	121101212	G 12 LL	100
L NB	6	4.0	24	10	39	12	14	12	121200606	G 06 L	315
	8	6.0	25	11	40	14	17	16	121200808	G 08 L	315
	10	8.0	27	13	42	17	19	23	121201010	G 10 L	315
	12	10.0	28	14	43	19	22	28	121201212	G 12 L	315
	15	12.0	30	16	46	24	27	51	121201515	G 15 L	315
	18	15.0	31	16	48	27	32	69	121201818	G 18 L	315
	22	19.0	35	20	52	32	36	90	121202222	G 22 L	160
	28	24.0	36	21	54	41	41	137	121202828	G 28 L	160
	35	30.0	41	20	63	46	50	214	121203535	G 35 L	160
S YB	6	4.0	30	16	45	14	17	26	121300606	G 06 S	630
	8	5.0	32	18	47	17	19	37	121300808	G 08 S	630
	10	7.0	32	17	49	19	22	44	121301010	G 10 S	630
	12	8.0	34	19	51	22	24	60	121301212	G 12 S	630
	14	10.0	38	22	57	24	27	77	121301414	G 14 S	630
	16	12.0	38	21	57	27	30	90	121301616	G 16 S	400
	20	16.0	44	23	66	32	36	143	121302020	G 20 S	400
	25	20.0	50	26	74	41	46	251	121302525	G 25 S	400
	30	25.0	54	27	80	46	50	330	121303030	G 30 S	400
	38	32.0	61	29	90	55	60	545	121303838	G 38 S	315

LL= very light series

L= light series

S= heavy series

PN (bar) = PN (MPa)

10

Zinc plated=Cr(VI)-free