

# KETSOL



- Womens
- Mens
- Kids
- Hats
- Cards
- Stickers
- Art Prints
- Puzzles

ROLLED SLEEVE  
(see p. 7)

WHOLESALE CATALOG // SPRING 2023



## About

Founded in 2016 by husband and wife duo Matt and Elise Holmes, Ketsol is based in the Colorado mountains near Vail. With a passion for adventure and exploration, the couple set out to create a brand that embodies that spirit through its line of comfortable, long-lasting clothing, functional gifts, gear, cards, and more.



## Core Values

### DESIGN INCREDIBLE STUFF

Create comfortable and durable activewear and eye-catching gifts for all life's adventures, from the backcountry to the backyard.

### ART IS LIFE

Evoke the excitement and connection all of us feel when in nature through artwork.

### PROTECT & RESTORE

Follow the "Campsite Rule" – leave it better than you found it – and use sustainable, recyclable materials and less-harmful dyes and fabrics in our products.

### EXPLORE WITH PURPOSE

Inspired by travel and adventure, create products that spark a connection with nature and allow customers to feel seen and connected in their love for the outdoors.



Co-Founders  
Elise & Matt  
Holmes



## Table of Contents

### Apparel

Womens

Unisex

Kiddos

Hats

p. 4-25

### Paper Goods

Cards

Stickers

Art Prints

p. 26-35

### Gifts & Gear

Puzzles

p. 36-37

### Biz Stuff

Terms & Conditions

Order Form

p. 38-39

WOLF MID-LENGTH PULLOVER  
(see p. 12)

TROUT HAT  
(see p. 24)

LAB UNISEX TEE  
(see p. 20)



# Scoop Neck Tee

**Stylish & Soft**

XS - XXL | 3 MOQ / Design | 19.50

65% polyester/35% Polyester

- Pre-washed to minimize shrinking
- Soft, flattering with a lower back and raw edge hem



**NEW**

**COHABIT**  
#WSN06 MIST



**NEW**

**BEAR**  
#WSN05 SKY



**NEW**

**BOLT**  
#WSN04 BERRY



**NEW**

**DEER**  
#WSN07 PETAL



**DEER**

We all need a reminder sometimes to shed the antlers we are done with and start fresh. Growth, change, and letting go inspire one of our most popular designs.

**WOLF**  
#WSN03 PINE



**MOUNTAINS TO SEA**  
#WRS01 HEATHER TEAL



**PINEY MOOSE**  
#WRS02 HEATHER OLIVE

# ***Rolled Sleeve***

***Our best selling womens style***

**S - XXL | 3 MOQ / Design | 19.50**

- 65% polyester / 35% viscose
- Perfect for adventurous outside or downtown
- Soft, flattering with a lower back and raw edge hem



**WOLF**  
#WRS08 NAVY



**MOON MOUNTAINS**  
#WRS04 MIST



**FOXES**  
#WRS06 STORM



**FOXES**  
#WRS07 MOAB



**SKI GIRL**  
#WRS05 BLACK



# High Neck Tank

**Soft yet Adventurous**

S - XXL | 3 MOQ / Design | 19.50

65% polyester, 35% viscose  
• Relaxed Drapey Fit  
• Soft, and perfect for anything from working out, to going out.



NEW

**BOLT**  
#WHNT03 PETAL



NEW

**DEER**  
#WHNT04 MOAB



**FOXES**  
#WHNT01 SAND



**SNAKE**  
#WHNT02 WHITE

## **BOLT**

Sparked from those moments spent outside in nature that recharge the soul and remind us of our purpose on this planet: to experience life fully.



**LIONSHEAD HAT**  
(see p. 24)

**OMNI JOGGER**  
SKY (see p. 17)



# Fave Tank

**Our best selling  
womens style**

XS - XXL | 3 MOQ / Design | 16.50

- 65% polyester / 35% viscose
- Perfect for adventurous outside or downtown
- Soft, flattering with a lower back and raw edge hem



**BLACK LAB**  
#WFT01 MIST



**PINEY MOOSE**  
#WFT02 PINE



**NEW**

**CAMPFIRE**  
#WFT03 BLACK



**NEW**

**SALMON**  
#WFT04 SKY



**NEW**

**PINE TREE**  
#WFT05 BERRY



**NEW**

**OWL**  
#WFT06 HEATHER GRAY

MINARET HAT  
(see p. 24)

[ketsol.com](http://ketsol.com) | [elise@ketsol.com](mailto:elise@ketsol.com) | office: 970.393.5911 retail: 970.763.5348



# Mid-Length Pullover

## Flattering & Warm

S - XXL | 3 MOQ / Design | 34.00

- 52% Cotton 48% Polyester Fleece
- Not a crop, not full length...just right!
- Super soft fleece
- Raglan cut sleeves and a crew neck add a classic sweatshirt touch



**BOLT**  
#WMP05 VANILLA



**COHABIT**  
#WMP04 NAVY

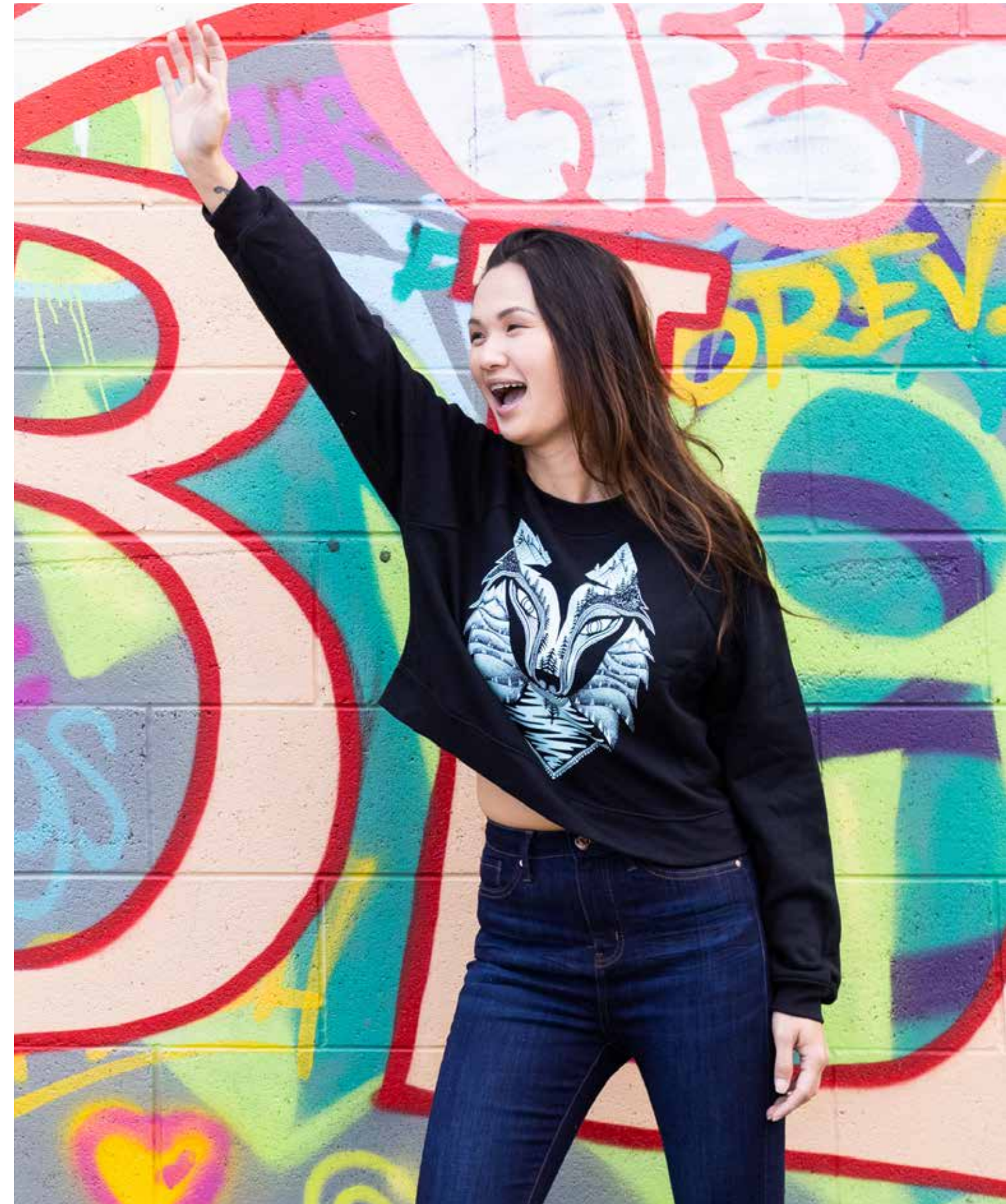


**WOLF**  
#WMP01 BLACK



## COHABIT

Inspired by the strong mountain women that flow with their lives and connect with the soft, sly, adventurous sides of nature and all those moments that are big and small that make us go 'OMG how freakin' cool!'





# Fleece Hoodie

**Lightweight and  
Just for Women**

XS - XXL | 3 MOQ / Design | 31.00

- 60% Cotton 40% Polyester Fleece
- Lightweight kangaroo pocket
- Contemporary slim fit
- Soft fleece with unlined hood
- Metal eyelets



**CAMPFIRE**  
#WH03 HEATHER GRAY



**OWL**  
#WH04 BLACK



**SKI GIRL**  
#WH01 ROSE



**BACKCOUNTRY**  
#WH02 CRANBERRY





# Omni Jogger

**Stylish & Soft**

S - L | 3 MOQ / COLOR | 35.00

95% polyester/5% Nylon

- Silky and airy fabric stretches and moves with your body
- Double waistband so it can be worn folded over or unfolded
- Non-see-through fabric, even when stretched



OMNI JOGGER  
#OMNI01  
BLACK



OMNI JOGGER  
#OMNI02  
MOSS



OMNI JOGGER  
#OMNI03  
SKY



**BLUE RIDGE HAT**  
(see p. 24)



**PINEY MOOSE**  
#UP01 CHARCOAL HEATHER



**MOUNTAINS TO SEA**  
#UH02 INDIGO



**SNAKE**  
#UH05 PETAL

**Crew Neck Pullover**

XS - XXL | 3 MOQ / Design | 34.00

- 50% Cotton 50% Polyester
- Flattering, stylish cut
- French Terry
- Raglan cut sleeves



**BACKCOUNTRY**  
#UP02 NAVY

**French Terry**



**YETI**  
#UH03 CHARCOAL HEATHER

**Hoodie**

XS - XXL | 3 MOQ / Design | 34.00

- 55% Cotton 45% Polyester
- French Terry Hooded Pullover
- Double Drawcords



**MOON MOUNTAIN**  
#UH04 OLIVE





NEW

**BACKCOUNTRY**  
#MT001 ATLANTIC



NEW

**BOLT**  
#MT002 OLIVE



NEW

**PINE TREE**  
#MT003 COLUMBINE



NEW

**MOON MOUNTAIN**  
#MT004 LICHEN



NEW

**CAMPFIRE**  
#MT005 GRANITE

**Crewneck Tees**  
XS - XXL | 3 MOQ / Design | 16.50

- 52% Cotton 48% Polyester
- Unisex Sizing
- Pre-Shrunk
- Ultra Soft
- Heathered coloring



NEW

**SALMON**  
#MT006 DARK GRAY



NEW

**BEAR**  
#MT007 FOREST



**TROUT**  
#MT008 SILVER



**PINEY MOOSE**  
#MT009 NAVY



**YETI**  
#MT010 SLATE



**MOUNTAINS TO SEA**  
#MT011 BLACK



**WOLF**  
#MT012 EMERALD



**LABRADOR**  
#MT013 SAGE

# Toddlers



**YOKOHAMA BEACH**  
#KH02

## Watercolor Truckers

OS | 3 MOQ / Design | 16.00

- Youth size smaller hat fit
- Snap Back Closure
- Sublimated print on front
- Yokohama hat has trucker mesh back
- Gore Range hat has twill back



**GORE RANGE**  
#KH01

## Heathered Toddler Tees

2T - 5T | 3 MOQ / COLOR/DESIGN | 13.00

52% Cotton 48% Polyester

- Pre-Shrunk
- Super soft
- Heathered Coloring



NEW

**CAMPFIRE**  
#KT05 CLAY



NEW

**OWL**  
#KT07 GRANITE



NEW

**BEAR**  
#KT02 PETAL



NEW

**BEAR**  
#KT01 LAGOON



**YETI**  
#KT06 ICY BLUE



NEW

**BOLT**  
#KT03 BEACH BLUE



NEW

**OWL**  
#KFH02 BLUE RIVER

## Hoodies

2T - 5T | 3 MOQ / Design | 29.50

- 52% Cotton 48% Polyester Fleece
- Crewneck raglan style sweatshirt
  - Pre-Shrunk
  - Ultra Soft
  - Heathered coloring



NEW

**BEAR**  
#KFH01 MOAB

## Sweatshirts

2T - 5T | 3 MOQ / Design | 24.50

- 52% Cotton 48% Polyester Fleece
- Crewneck raglan style sweatshirt
  - Pre-Shrunk
  - Ultra Soft
  - Heathered coloring



**YETI**  
#KS01 CHARCOAL



NEW

**CAMPFIRE**  
#KS03 NAVY



# Hats & Beanies



WOLF  
#HAT001



TROUT  
#HAT002



EAGLE  
#HAT003

## Embroidered Hats

OS | 3 MOQ / Design | 18.00

- Embroidered artwork front
- Trucker mesh back
- Snap Back Closure



MINARET  
#HAT004



LIONSHEAD  
#HAT005



BLUE RIDGE  
#HAT006



YOKOHAMA  
#HAT007



GORE RANGE  
#HAT008

## Watercolor Truckers

OS | 3 MOQ / Design | 16.00

- Sublimated print on front
- Trucker mesh back
- Blue Ridge hat has twill back
- Snap Back Closure



BELLES  
#BH01



BALTIC  
#BH02



DANGER  
#BH03



FOG  
#BH04



SAGE  
#BH05



MELT  
#BH06

## Beanies

OS | 3 MOQ / COLOR | 9.00

- Soft, non-irritating thread
- Durable and machine washable/dryable
- Perfect under-the-helmet fit
- One size fits most

# Cards



LLAMA  
#CRD001



SALMON  
#CRD002



FOXES  
#CRD003



TIGER  
#CRD004



DEER  
#CRD005



PINEY MOOSE  
#CRD006



TROUT  
#CRD007



LABRADOR  
#CRD008



BADGER  
#CRD009



PUFFINS  
#CRD010



LUNA MOTH  
#CRD011



UNICORN  
#CRD012



DESERT SKULL  
#CRD014



SNAKE  
#CRD015



YETI  
#CRD016



BUFFALO  
#CRD018

## Blank cards for all occasions

OS | 6 MOQ / Design | 2.50

- Thick 130# cover recycled paper
- A2 Size (4.25"x5.5")
- Individually packaged with white envelope in cello bag



# Cards



**MINARETS**  
#CRD024



**GORE RANGE, CO**  
#CRD025



**BLUE RIDGE MOUNTAINS**  
#CRD026



**NORTHERN LIGHTS**  
#CRD027



**YOKOHAMA BEACH**  
#CRD028



**LIONSHEAD ROCK**  
#CRD029



**RUBY HORSETHEIF**  
#CRD030

## Blank cards for all occasions

OS | 6 MOQ / Design | 2.50

- Thick 130# cover recycled paper
- A2 Size (4.25"x5.5")
- Individually packaged with white envelope in cello bag



**SKI GIRL**  
#MSC01



**SNOWBOARD DREAMS**  
#MSC02



**UNITY**  
#MSC03



**COHABIT**  
#MSC04



**MOUNTAIN MEN**  
#MSC05



# Vinyl Stickers



**HARE**  
#STKR006



**BEAR**  
#STKR007



**BUFFALO**  
#STKR008



**DESERT SKULL**  
#STKR009



**BADGER**  
#STKR010



**MOUNTAIN MEN**  
#STKR001



**SNOWBOARD DREAMS**  
#STKR002



**FOXES**  
#STKR011



**TROUT**  
#STKR012



**YETI**  
#STKR013



**DEER**  
#STKR014



**CAMP FIRE**  
#STKR001



**SKI GIRL**  
#STKR004



**UNITY**  
#STKR005



**LLAMA**  
#STKR016



**LUNA MOTH**  
#STKR017



**PINEY MOOSE**  
#STKR018



**SNAKE**  
#STKR019



**UNICORN**  
#STKR020



**LABRADOR**  
#STKR021



**TIGER**  
#STKR022



**OWL**  
#STKR023

## Totem Animal Stickers

6 MOQ / Design | 2.50

- Weatherproof Vinyl
- Die-Cut
- Size varies, typically 4" at longest point



**COHABIT**  
#STKR003



## Large Mountain Spirit Stickers

6 MOQ / Design | 3.00

- Weatherproof Vinyl
- Die-Cut
- Approximately 6" Tall each



# Art Prints



**BACKCOUNTRY**  
#AP001



**POWDER DAY**  
#AP002



**BLACK LAB**  
#AP003



**LUNA MOTH**  
#AP004



**DESERT SKULL**  
#AP005



**PINEY MOOSE**  
#AP006



**BLUE RIDGE MOUNTAINS**  
#AP013



**GORE RANGE - VAIL**  
#AP014



**NORTHERN LIGHTS**  
#AP015



**DEER**  
#AP007

## Perfect home decor additions

OS | 3 MOQ / Design | 9.00

- Thick 130# cover recycled paper
- 8"x10" size
- Individually packaged with backing in cello bag

# Art Prints

NEW



SKI GIRL  
#AP008

NEW



SNOWBOARD DREAMS  
#AP009

NEW



UNITY  
#AP010

NEW



COHABIT  
#AP011

NEW



MOUNTAIN MEN  
#AP012



## Perfect home decor additions

OS | 3 MOQ / Design | 9.00

- Thick 130# cover recycled paper
- 8"x10" size
- Individually packaged with backing in cello bag

# Puzzles

## Watercolor Art

1000 Piece | 6 MOQ / Design | 14.50  
 500 Piece | 6 MOQ / Design | 12.00

- High-quality puzzle pieces and print detail
- Includes larger print for reference
- 28" x 20" inches completed size
- Shrink Wrapped Individually



UNITY | 1000  
#PUZ01



SKI GIRL | 1000  
#PUZ02



MOUNTAIN MEN | 1000  
#PUZ03



GORE RANGE | 1000  
#PUZ04



BLUE RIDGE | 1000  
#PUZ05



MINARET | 500  
#PUZ06



LIONSHEAD | 500  
#PUZ07



# Terms & Conditions

## What our retailers are saying



*'I can't wait to reorder. Everything is so beautiful, bright, and artistic. Love love love!'*

*- Karyn,  
Dandelions & Rust*



*'I really enjoy working with Ketsol, their customer service is fantastic and so are their products!'*

*- Jemma,  
Threadwork*



*'I think Ketsol might be our favorite vendor!'*

*- Samantha,  
LUE Outdoors*

WOLF HAT  
(see p. 24)

MOON MOUNTAIN HOODIE  
(see p. 19)

## How to Order

EMAIL: [elise@ketsol.com](mailto:elise@ketsol.com)

PHONE: 970 393 5911 or CELL: 828 508 4776

FAIRE: [ketsol.faire.com](http://ketsol.faire.com)



## Payment

Payment is made via credit card. Orders are charged at time of shipment.

## Shipping

Orders will be shipped as soon as possible. In-stock items will be shipped within 5 business days, unless otherwise specified by the buyer. The shipping carrier will be either USPS, UPS, or FedEx for orders in Canada, whichever is the most cost-effective option for the buyer, unless otherwise instructed. The buyer is responsible for all shipping costs. Expedited shipping is an optional extra cost that must be requested when the order is placed. Ketsol is not accountable for any shipping delays caused by the carrier. If an order is returned to sender, the shipping charges will not be refunded. The buyer is responsible for any duties and customs fees.



## Mailing Address

PO Box 669, Avon, CO 81620



## Find us on Insta

@ketsolco

## Order Minimums

Minimum opening order: \$250

Minimum reorder: \$175

## Backorders

At our company, communication is key. We will inform you of what items can be shipped immediately and what is in production and its expected shipment date. As a small clothing business with a variety of sizes, there may be times when items are out of stock. In these instances, we will update you on the status of your order within 3 business days with regards to shipment and fulfillment. Out-of-stock or backordered items will be placed on a separate order. We will promptly notify you about these items so you can choose to cancel the remaining items or have them shipped and charged when they become available.

## Cancellations, Adjustments, Returns & Exchanges

To make changes to or cancel an order, you must send an email request within 24 hours of placing the order. Returns and exchanges are not accepted. If you receive damaged goods, you must report it within 5 business days of receiving the order and return the items within 10 business days. Please send photos of the damaged goods to [elise@ketsol.com](mailto:elise@ketsol.com). Upon receipt of the damaged goods, a refund will be issued using the original payment method. If there are errors in your order, please notify us within 5 business days of receiving the order.



**OMNI JOGGER**  
MOSS (see p. 17)