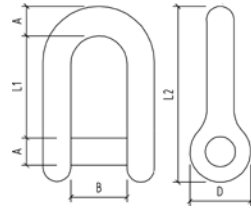


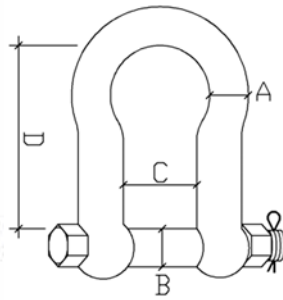
SEMI ROUND DEE SHACKLE

Code	A	B	D	L1	L2
SS-3611-05	3.95	11.9	12	19.5	31.6
SS-3611-06	4.8	12.9	13.7	22	36.9
SS-3611-08	6.4	18	18	27.2	46.6



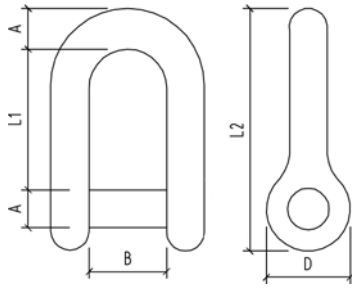
TWISTED SHACKLE

Code	A	B	D	L1	L2	TDL(KG)
SS-380-06	5.1	13.4	11	33	46.5	TBA
SS-380-08	7.7	17.4	15.4	40	59.5	1120
SS-380-10	10	20	19.7	46.8	70	1600



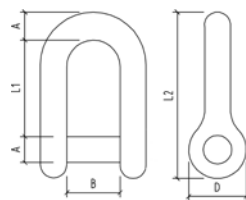
ANCHOR SHACKLE

Code	A	B	C	D	TDL (KG)
SS-2711BB-516	5/16"	94.00	13.9	32.5	1500
SS-2711BB-38	3/8"	10.97	16.3	36.4	2200
SS-2711BB-716	7/16"	12.72	20.64	43.87	3500
SS-2711BB-58	5/8"	19.05	27.00	68.30	TBA
SS-2711BB-34	3/4"	21.96	29.87	73.7	8000



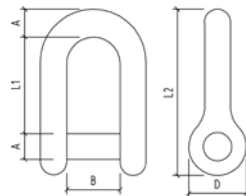
SLOTTED HEAD DEE SHACKLE

Code	A	B	D	L1	L2	TDL (KG)
SS-360C-04	4	8	7.9	14	24	280
SS-360C-06	6	12	12	21	35	550
SS-360C-07	7	14	14	25	42	720
SS-360C-08	8	17	15.9	28.6	48	1120
SS-360C-10	10	20	20	35	59	1600



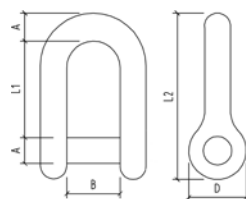
SEMI ROUND D SLOT HEAD SHACKLE - 304 GRADE

Code	A	B	D	L1	L2	TDL (KG)
SS-361-05	5	12	12.5	19.4	30	400
SS-361-06	6	13	14	22	36	550
SS-361-08	8	17.6	18	27	47	1120



SQUARE HEAD DEE SHACKLE

Code	A	B	D	L1	L2	TDL (KG)
SS-360B-10	10	21.3	20	35	59	1600
SS-360B-12	12	24.3	23.4	42.4	71	2400



LONG DEE SHACKLE

Code	A	B	D	L1	L2	TDL (KG)
SS-362-04	4.4	9	7.6	32	40.8	200
SS-362LK-06	5.25	12.7	11.6	45.5	59.2	550
SS-362LK-08	7.1	15.5	15.5	60	80	1120
SS-362-10	10	21.5	20	75.5	99	1600
SS-362-12	12	27	53.3	90	118	2400

TDL = TESTED DEFORMATION LOAD