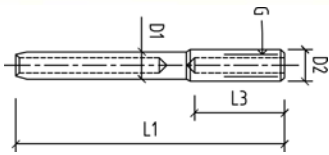


\* Available in economy range of fittings. Please consult our sales department for pricing.  
 # Indicates mini forks, both mini forks are pressed with HEX3 dies.

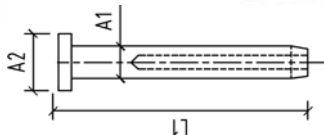
FORK TERMINAL

| CODE           | WIRE MET | DIA IMP | D3 | L1    | L2    | L3   | A  |
|----------------|----------|---------|----|-------|-------|------|----|
| #SS-7803X-025  | 2.5      | 3/32"   | 5  | 45    | 28    | 11.5 | 7  |
| #SS-7803-225   | 2.5      | 3/32"   | 5  | 45    | 28    | 11.5 | 7  |
| #SS-7803-905   |          | 1/8"    | 5  | 45    | 28    | 11.5 | 7  |
| *SS-7803M-305  |          | 1/8"    | 5  | 67    | 40    | 11.5 | 7  |
| *SS-7803M-305  | 3        |         | 5  | 67    | 40    | 12   | 7  |
| SS-7803-03     |          | 1/8"    | 6  | 65    | 32    | 13   | 8  |
| SS-7803M-03    | 3        |         | 6  | 65    | 32    | 13   | 8  |
| SS-7803-406    | 4        | 5/32"   | 6  | 73    | 45    | 15   | 8  |
| SS-7803-04     | 4        | 5/32"   | 8  | 77    | 46    | 15   | 11 |
| SS-7803-05     |          | 3/16"   | 9  | 87    | 51    | 15   | 11 |
| SS-7803M-05    | 5        |         | 9  | 87    | 51    | 18   | 11 |
| SS-7803-06     |          | 1/4"    | 12 | 108.5 | 69    | 27   | 15 |
| SS-7803-06/HD  | 6        |         | 12 | 120   | 76    | 27   | 15 |
| SS-7803M-06/HD | 6        |         | 12 | 120   | 76    | 27   | 15 |
| SS-7803M-06    | 6        |         | 12 | 106   | 63    | 27   | 15 |
| SS-7803-08     | 8        | 5/16"   | 14 | 145   | 82.5  | 29   | 15 |
| SS-7803-0812   | 8        | 5/16"   | 12 | 148   | 80.7  | 27.7 | 15 |
| SS-7803-10     |          | 3/8"    | 16 | 150   | 91    | 37   | 20 |
| SS-7803M-10    | 10       |         | 16 | 150   | 91    | 37   | 20 |
| SS-7803-12     |          | 1/2"    | 19 | 175   | 106.5 | 37   | 20 |
| SS-7803M-12    | 12       |         | 19 | 175   | 106.5 | 37   | 20 |
| SS-7803M-14    | 14       |         | 25 | 285   | 165   | 52   | 30 |
| SS-7803M-16    | 16       |         | 25 | 285   | 165   | 52   | 30 |



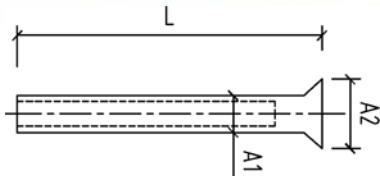
INTERNAL THREAD TERMINALS

| CODE        | WIRE DIA | L1 | D1   | D2 | L3 | G  |
|-------------|----------|----|------|----|----|----|
| SS-7811-503 | 1/8"     | 88 | 6.35 | 8  | 35 | M5 |
| SS-7811-604 | 5/32"    | 95 | 7.5  | 8  | 35 | M6 |



FLAT HEAD TERMINALS

| CODE        | WIRE SIZE | L1   | A2 | A1   |
|-------------|-----------|------|----|------|
| SS-7840-03Z | 1/8"      | 48.5 | 10 | 6.35 |
| SS-7840-04  | 5/32"     | 59   | 12 | 7.5  |



CONE HEAD TERMINALS - 304 GRADE

| CODE       | WIRE SIZE | L    | A2 | A1   |
|------------|-----------|------|----|------|
| SS-7841-03 | 1/8"      | 48.5 | 10 | 6.35 |

TDL = TESTED DEFORMATION LOAD