

UP117 SUPERSONIC SPINNER - MINI

Parts List		
DESCRIPTION	QTY	PART NUMBER
HANDRAIL ASS'Y	4	100274
COVER PLATE	1	105758
SHIELD MOUNTING BRACKET	4	124511
PLATFORM ASS'Y	1	126905
SHIELD	2	127322
BASE ASS'Y w/BRAKE	1	127731
HARDWARE COMPLETE	1	155025
CORK GASKET	1	101405
#10 x 5/8" PAN HEAD SCREW	6	816017
1/4" FLAT WASHER (5/8" O.D.)	6	817408
5/16" x 1" B.H.C.S.	4	811042
5/16" LOCK WASHER	4	817330
5/16" HEX NUT	4	804052
3/8" x 1 1/4" HEX HEAD BOLT	4	801004
3/8" x 1" SELF TAPPING HEX HEAD BOLT	7	801850
3/8" x 1" CARRIAGE BOLT	12	800253
3/8" FLAT WASHER (1 1/4" O.D.)	6	817424
3/8" LOCK WASHER	22	817334
3/8" HEX NUT	16	804053
1/2" ANCHOR BOLT	4	800000
1/2" LOCKWASHER	4	817342
1/2" HEX NUT	8	804055

Unless Otherwise Specified, All Units of Measure are Each

Items listed below Hardware Complete line are included with Hardware Complete Number

Warning: During Installation, Hardware And Small Parts Are Choking Hazards For Young Children. Store Unused Parts Appropriately Until Assembly Is Completed. Once Assembly Is Completed, Remove Any Unused Parts From The Play Environment And Dispose/Save Them In A Secure Location. Any bolt end protruding more than two full threads beyond the face of the nut causes risk of clothing entanglement. Promptly cut-off flush, file smooth, and treat to prevent corrosion.

Note: Peen Tee-Nuts and Flatwashers to match radius of pipe after assembly is complete.

Note: Loctite (supplied by others) should be used on any non-patch hardware.

SPECIFICATIONS:

PLATFORM ASSEMBLY:

Shall be formed of one piece 11 gauge H.R. steel with a slip resistant dimpled surface with a turned under flange. Braces shall be fabricated of 1 5/16" O.D. galvanized pipe. Platform shall be an all welded construction.

HUB:

Shall be fabricated of 3 1/2" O.D. pipe with 1/4" H.R. flat plate.

BASE ASSEMBLY:

Legs shall be fabricated of 2 7/8" O.D. galvanized pipe. Axle shall be fabricated of 1 5/8" O.D. cold rolled steel. Collar shall be fabricated of 2 3/4" O.D. tube. Base assembly shall be an all welded construction.

BRAKE DRUM:

Shall be fabricated of 8 1/2" O.D. pipe with 1/4" H.R. flat plate welded in place to receive hub and platform plates.

SPRING MOUNTING PLATE ASSEMBLY:

Shall be fabricated of 3/16" H.R. flat steel to form weld assembly.

UP117 SUPERSONIC SPINNER - MINI

SPRING:

Shall be heavy duty die spring of rectangular wire construction.

HOLDING BRACKET:

Shall be an all welded assembly fabricated from 3/16" H.R. flat steel with 5/8" diameter C.R. threaded rod.

WHEEL:

Shall have die cast aluminum core with sealed roller bearings. Cast polyurethane tread is chemically bonded to core.

HANDRAILS:

Shall be fabricated of 1 1/16" O.D. galvanized pipe,. Handrails shall be an all welded construction.

SHIELD HALVES:

Shall be color-impregnated, molded polyethylene with 3/16" nominal thickness.

SHIELD MOUNTING BRACKET:

Shall be fabricated of 3/16" H.R. flat steel, drilled and tapped to receive 3/8" bolts. Brackets shall have a powder coat finish.

BRAKE ASSEMBLY:

Shall consist of high torque, low speed fluid motor; flow control hydraulic valves; push back hose with synthetic rubber liner, textile braid reinforcement, and synthetic rubber cover; pump gear fabricated of steel with 2" O.D. drive collar.

FINISH:

Platform shall have a powder coat finish. Handrails and base shall be painted aluminum.

HARDWARE:

All nuts, bolts, screws, inserts, and lockwashers used in the assembly of all play equipment, shall be stainless steel, yellow dichromate plated steel, blue-coat plated steel, mechanically galvanized or powder coated/yellow dichromate plated steel. All primary fasteners shall be 300 series stainless steel. Fasteners with yellow dichromate treatment have an electro deposited, 99.9% pure zinc substrate applied from a specifically formulated solution sealed with a yellow dichromate top coat designed to work in conjunction with the zinc plating. Yellow dichromate has a 320% longer life to white corrosion and 275% longer to red corrosion than does hot-dip galvanizing.

INSTALLATION INSTRUCTIONS:

NOTE: THIS SPECIFICATION BOOKLET SHOULD BE KEPT IN CUSTOMER'S FILE FOR FUTURE REFERENCE.

NOTE: Do not over tighten bolts. To over tighten may cause buckling or dimpling of some parts.

NOTE: Read installation instructions thoroughly before starting assembly. Pour concrete only after final assembly is complete. Bracing material may be required during assembly.

NOTE: Do not tighten any nuts, bolts, rods, etc. until the unit is completely assembled.

NOTE: Do not attempt to adjust tension spring. It has been preset and is ready for use. Any tampering could void the warrant. The spring has sufficient strength to maintain constant load even if wear occurs on the pressure roller.

NOTE: Due to extremes in weather and soil conditions, hole sizes may have to be increased to meet local conditions.

1. Dig hole for base per determined footing. See side views. **NOTE:** Due to extremes in weather and soil conditions, hole sizes may have to be increased to meet local conditions.
2. Place first nut in one of the four anchor bolts, so that 1 1/4" of thread is left. Insert the anchor bolts through the shield mounting brackets and the base. Secure with second nut and lockwasher. See Detail 806. **NOTE:** Use loctite (supplied by others) on all bolts.
3. Fill hole with concrete. Concrete should be stiff enough to support shield mounting brackets while concrete is still wet.
NOTE: Do not allow excess concrete to build up or spill around the footing hole.
4. Position base on concrete. Force anchor bolts down into cement until shield mounting brackets rest against concrete. Level base. Allow a minimum of 48 hours for concrete to harden before continuing.

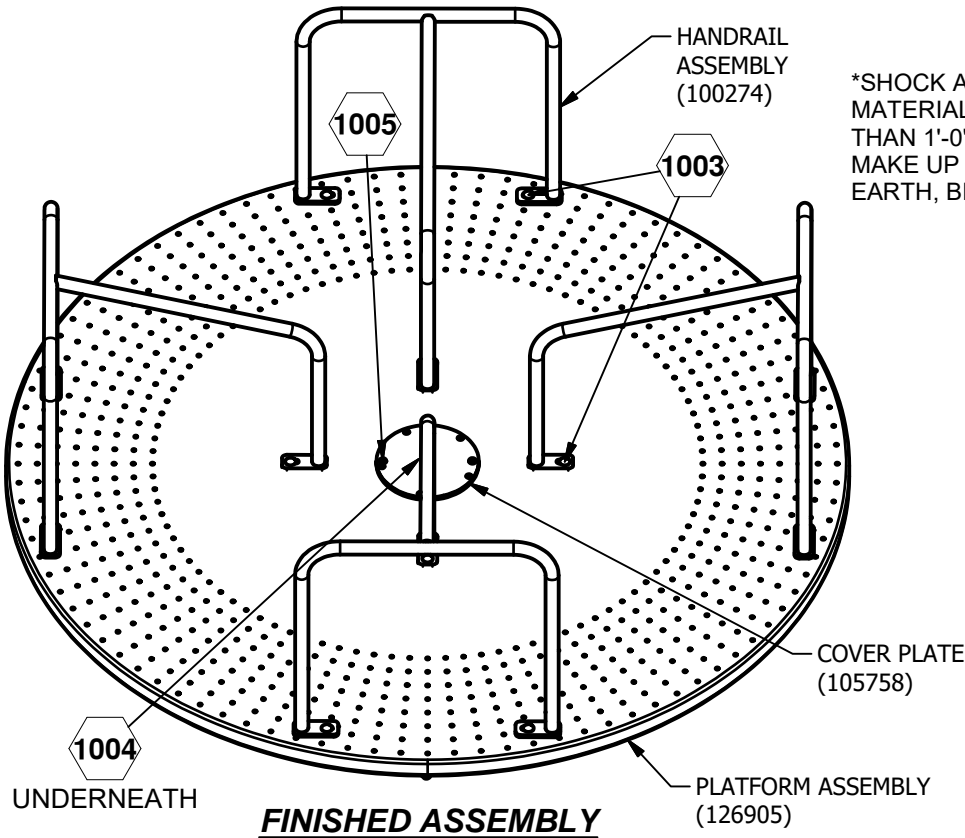
UP117 SUPERSONIC SPINNER - MINI

5. After concrete has cured, position Shields on Base Assembly. Be sure that mounting holes in the Shields and Shield Mounting Brackets are aligned properly when Shield is centered about the axle. If necessary loosen and adjust Mounting Brackets to achieve alignment. Apply loctite to anchor bolts and retighten after adjustment is finished. Remove shield halves before proceeding.
6. Attach Platform Ass'y to Base Ass'y w/Brake using 3/8" x 1 1/4" Hex Head Bolt, 3/8" Lock Washer, and 3/8" Hex Nut. See Detail 807.
7. Bolt Handrails to Platform using 3/8" x 1" Carraige Bolts, 3/8" Lockwashers, and 3/8" Hex Nuts (typical 12 places). See Detail 1003.
8. After concrete has hardened 48 hours, with sufficient manpower, lift the platform onto the axle. Fasten platform to base assembly using 2" O.D. flatwasher and 3/8" self-tapping bolt. Align holes in flange and brake drum. Attach using hardware as shown. See Detail 1004.
9. **Very Important...** Place special 8" O.D. Cork Gasket over center opening, align holes in Cork Gasket with holes in whirl deck. Bolt round cover plate in place with 5/16" x 1" B.H.C.S., 5/16" Lockwashers, and 5/16" Hex Nuts. Do not overtighten. See Detail 1005.
10. Secure Shields to Shield Mounting Brackets using 3/8" x 1" Self Tapping Hex Head Bolt and 3/8" Flat Washer (1 1/4" O.D.). See Detail 807.
11. Attach Shields to each other using #10 x 5/8" Pan Head Screw and 1/4" Flat Washer. See Detail 220.

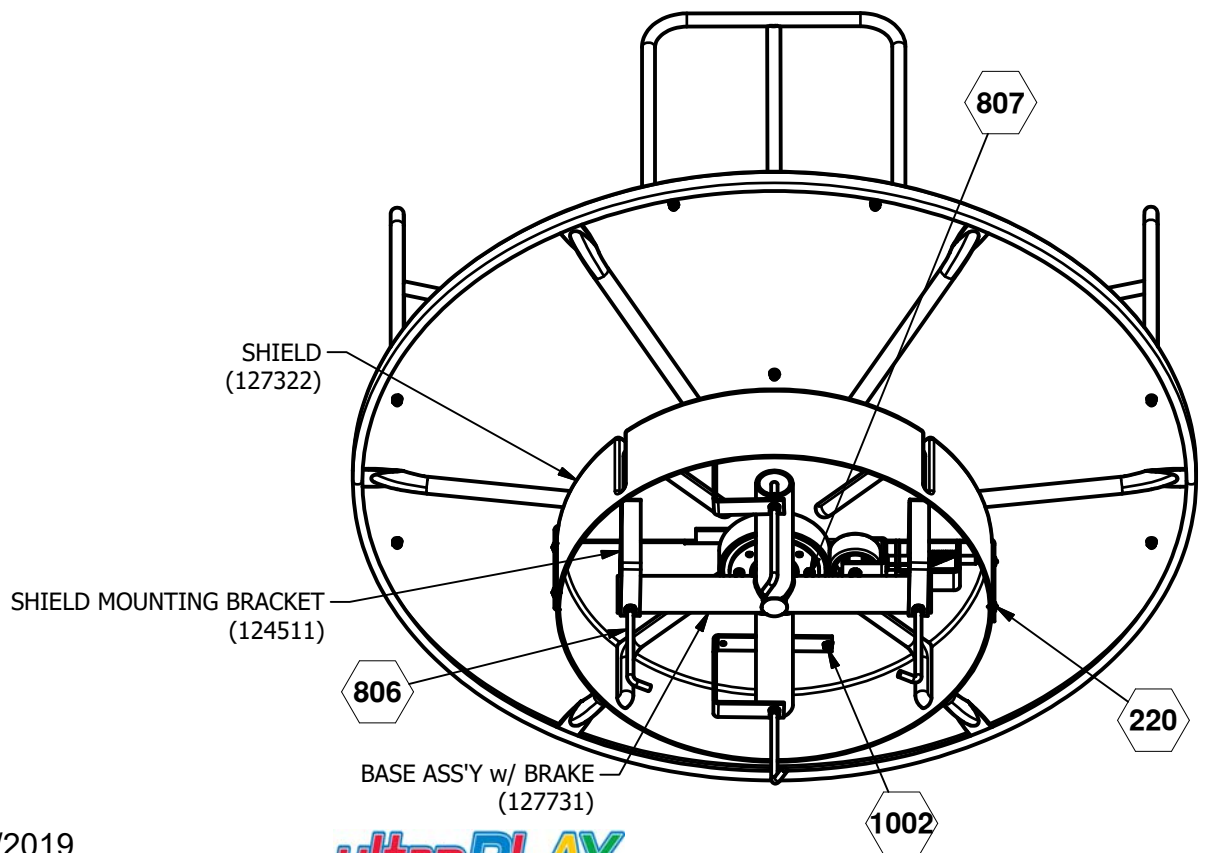
MAINTENANCE PROCEDURE:

Periodically check hardware for tightness, and tighten as necessary. Always check all parts for breakage or wear, and immediately put equipment out of service until any faulty parts found are repaired or replaced. Also Check all metal parts for rust, paint loss and touch-up if necessary with paint. Check for welded areas and verify integrity. Check periodically resilient surfacing for appropriate depth and remove extraneous materials that could cause injury, infection, or disease. Maintain detailed installation, inspection, maintenance, and repair records for each public-use playground equipment.

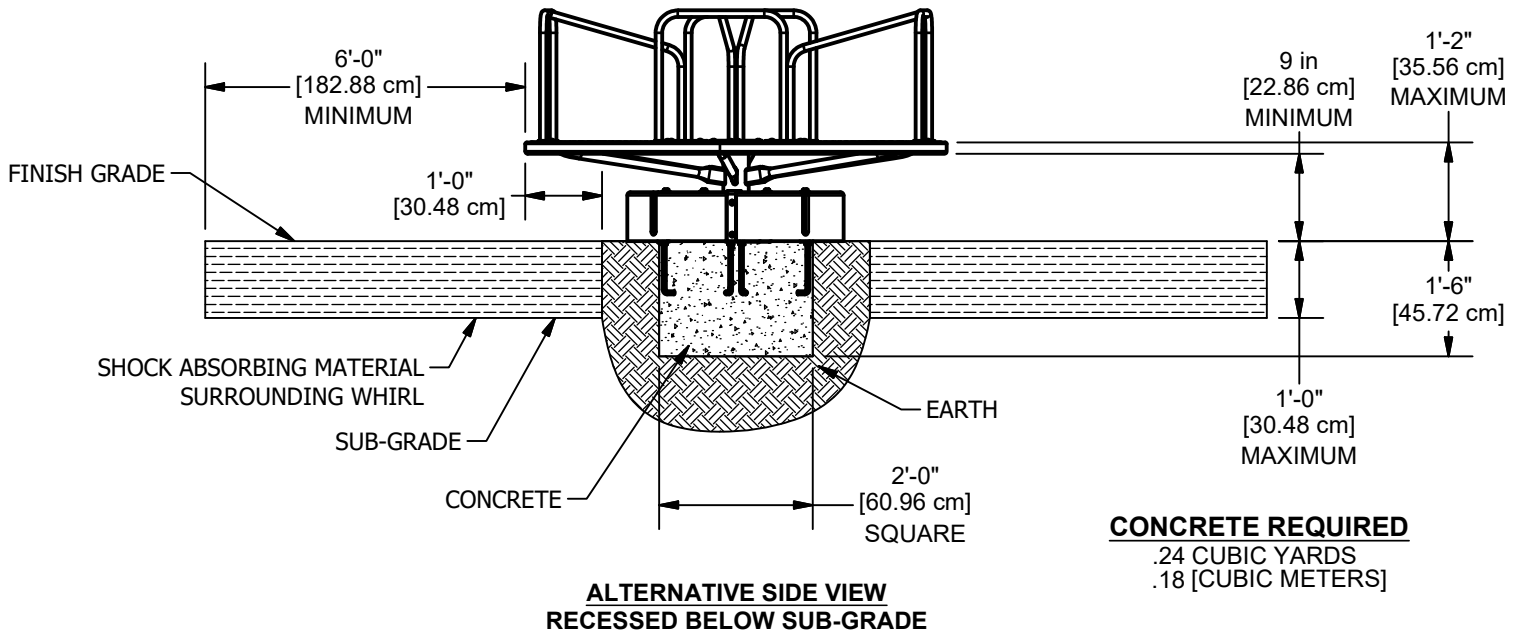
UP117 SUPERSONIC SPINNER - MINI



*SHOCK ABSORBING PROPERTIES OF SURFACING MATERIALS VARY. IF YOU DETERMINE THAT LESS THAN 1'-0" [30.48 CM] OF SURFACING IS REQUIRED, MAKE UP THE DIFFERENCE IN ELEVATION WITH EARTH, BEFORE APPLYING SURFACING.

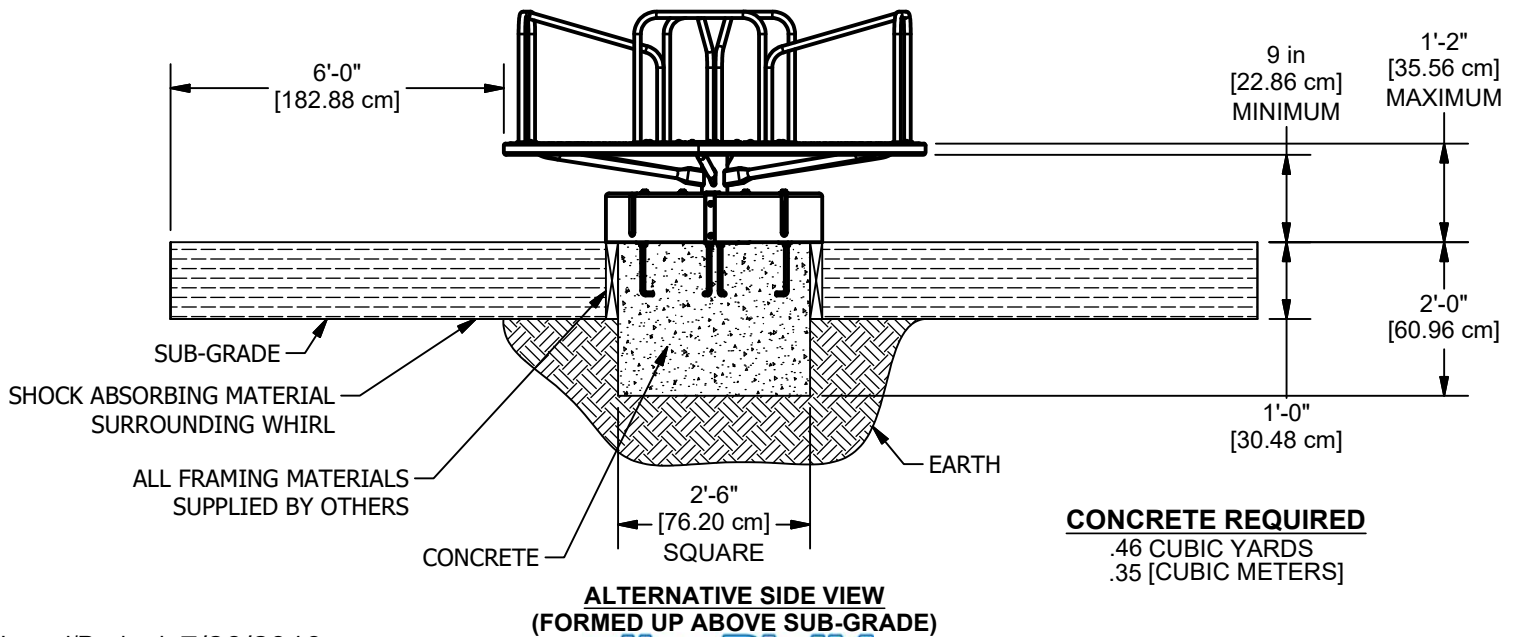


UP117 SUPERSONIC SPINNER - MINI

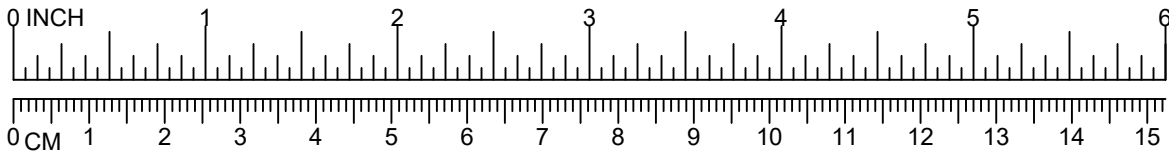


NOTES:

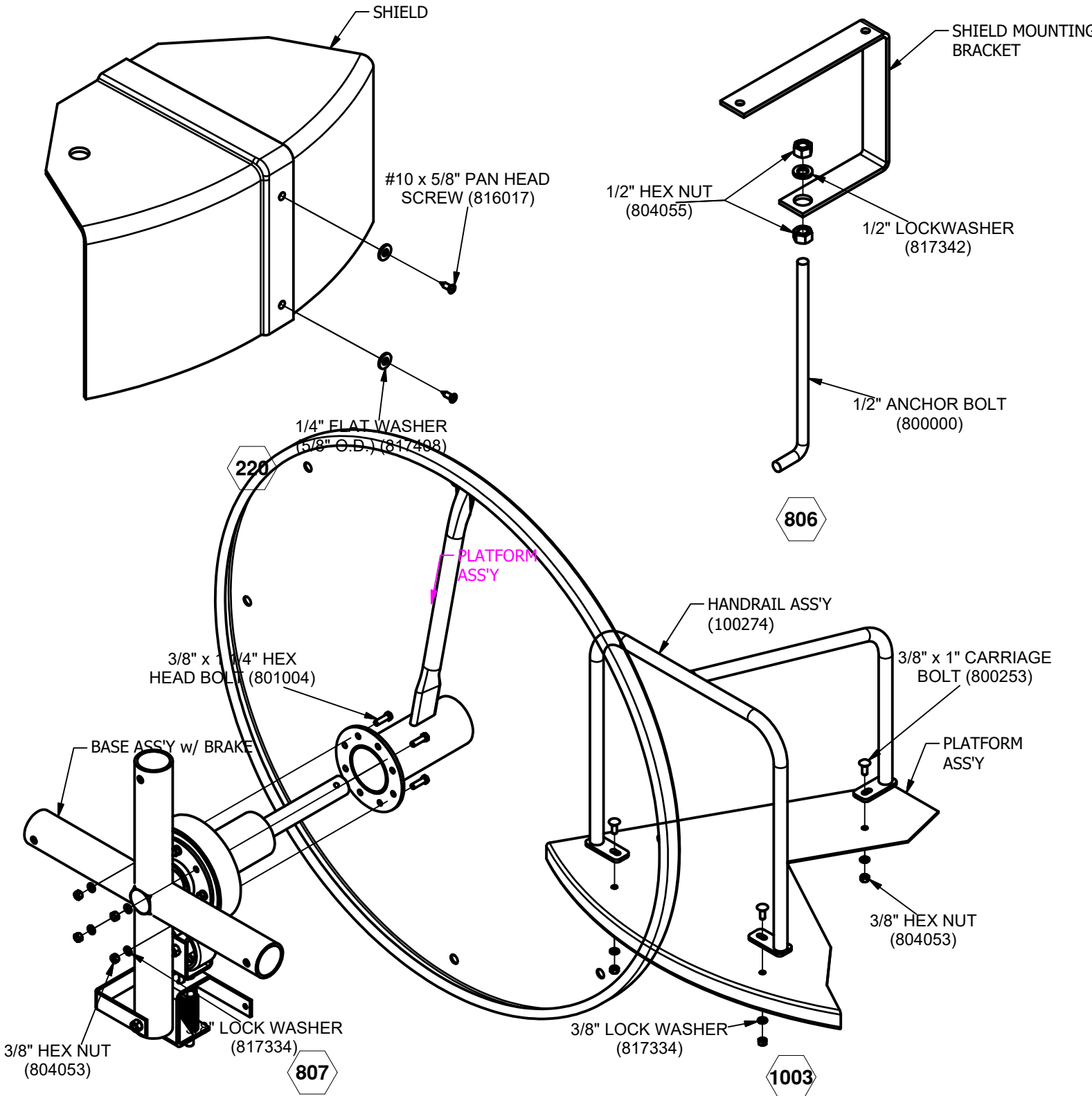
- *SHOCK ABSORBING PROPERTIES OF SURFACING MATERIALS VARY. IF YOU DETERMINE THAT LESS THAN 1'-0" [30.48 CM] OF SURFACING IS REQUIRED, MAKE UP THE DIFFERENCE IN ELEVATION WITH EARTH, BEFORE APPLYING SURFACING.
- *SUGGESTED MINIMUM CONCRETE RATING: 3000 PSI.
- *HOLE DEPTHS INDICATED ARE MEASURED FROM THE FINISH SURFACE. SEE GROUND DETAIL. ALL FOOTING DIMENSIONS ARE BASED ON LEVEL FINISHED SURFACE.



Issued/Revised: 7/26/2019



UP117 SUPERSONIC SPINNER - MINI

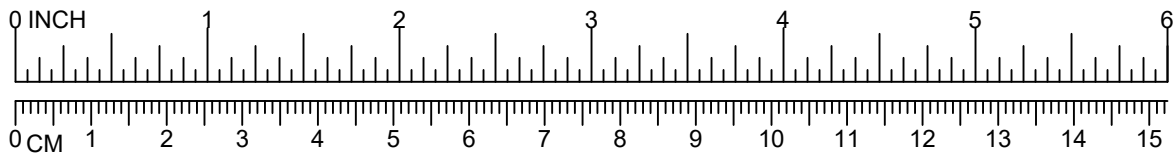


Issued/Revised: 7/26/2019



800.458.5872

www.ultraplay.com



UP117 SUPERSONIC SPINNER - MINI

