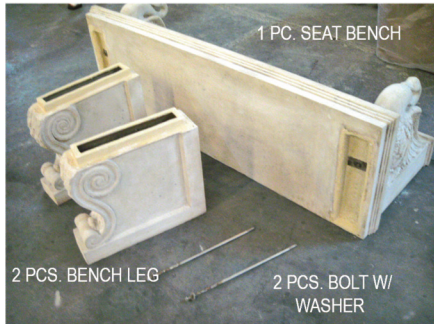


design **TOSCANO**[®]
INSTRUCTIONS
FOR YOUR PRODUCT

NE90080
Giant Neoclassical Swan Garden Bench

Thank you for your recent purchase of this Design Toscano hand-crafted piece of furniture art. We have taken great care to create this piece especially for you. Please review these instructions and assemble this piece with care. Do not over tighten any screw or bolt connection.



Parts

One bench seat, two bench legs and provided two bolts with washer.



Step 1

First, attach the bolt with washer on the bottom of the bench leg. (See hole.)



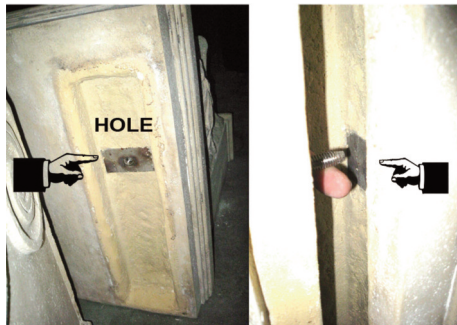
Step 2

See picture attachment for the bolt inserted, just hold the end of the bolt for inserting on bench.



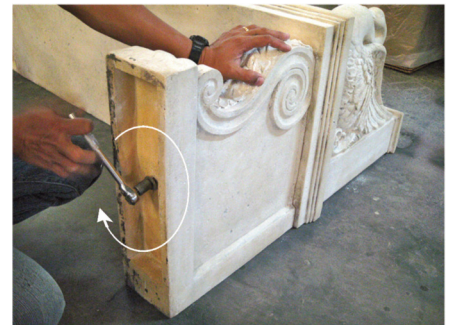
Step 3

Insert the bench leg on the bottom of the seat bench.



Step 4

See hole at the bottom of the seat bench and inserting procedure. (Still hold the bolt until it is inserted.)



Step 5

When the bench leg is properly connected, use wrench to tighten the bolt by turning it clockwise.



Step 6

Use steps 1-6 to attach the other bench leg.



Completed bench.

©Copyright 2016, Design Toscano, Inc.

1 . 8 0 0 . 5 2 5 . 0 7 3 3
DESIGN TOSCANO.COM

THANK YOU FOR
YOUR PURCHASE