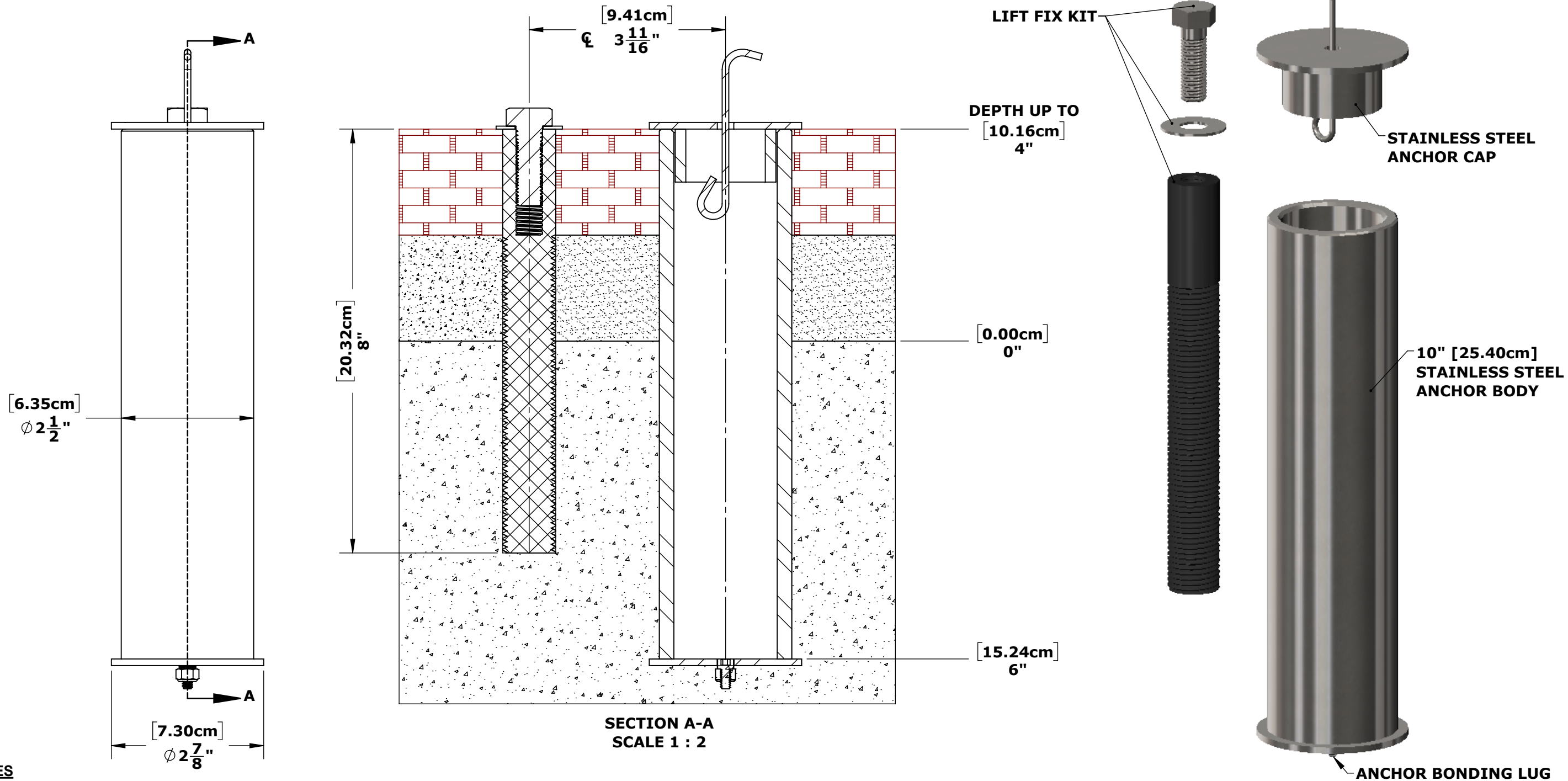


SPECIFICATIONS:

THE SCOUT LIFT ANCHOR SHALL BE CONSTRUCTED OF STAINLESS STEEL WITH A BONDING LUG. THE O.D. OF THE ANCHOR SHALL BE 2 1/2" [6.35cm], AND SHALL ACCOMMODATE A 1.90" [4.83cm] DIAMETER, 6" [15.2cm] LONG POST. A PROTECTIVE, STAINLESS STEEL CAP SHALL BE INCLUDED FOR WHEN NOT IN USE.



ANCHOR - 1.90"X10.00" - W/KIT
F-808SA-10
PART NO. INV01495

TOLERANCES
DIMENSIONS ARE IN INCHES
UNLESS OTHERWISE SHOWN
FRACTIONAL: ±1/16
ANGULAR: ±1°
TWO PLACE DECIMAL: ±.01
THREE PLACE DECIMAL: .. ±.005

MATERIAL: 304 STAINLESS STEEL
FINISH: MILL
APPROX. WEIGHT: 6.74 LBS.



9889 GARRYMORE LANE
MISSOULA, MT 59808
(406) 549-0769
FAX (406) 549-2602
www.AquaCreek.com

PROPRIETARY AND CONFIDENTIAL INFORMATION
THIS DRAWING AND ALL INFORMATION CONTAINED HEREIN IS THE SOLE PROPERTY OF AQUA CREEK PRODUCTS LLC. ANY REPRODUCTION IN PART OR AS A WHOLE WITHOUT WRITTEN PERMISSION FROM AQUA CREEK IS PROHIBITED.
*SPECIFICATIONS ARE SUBJECT TO CHANGE WITHOUT NOTICE

| REVISIONS | | | |
|-----------|-------------------------------------|-----------|-----------|
| REV. | DESCRIPTION | DATE | APPROVED |
| P1 | INITIAL RELEASE | 4/7/2021 | J.MAXWELL |
| P2 | CHANGED MATERIAL TO STAINLESS STEEL | 1/11/2022 | J.MAXWELL |