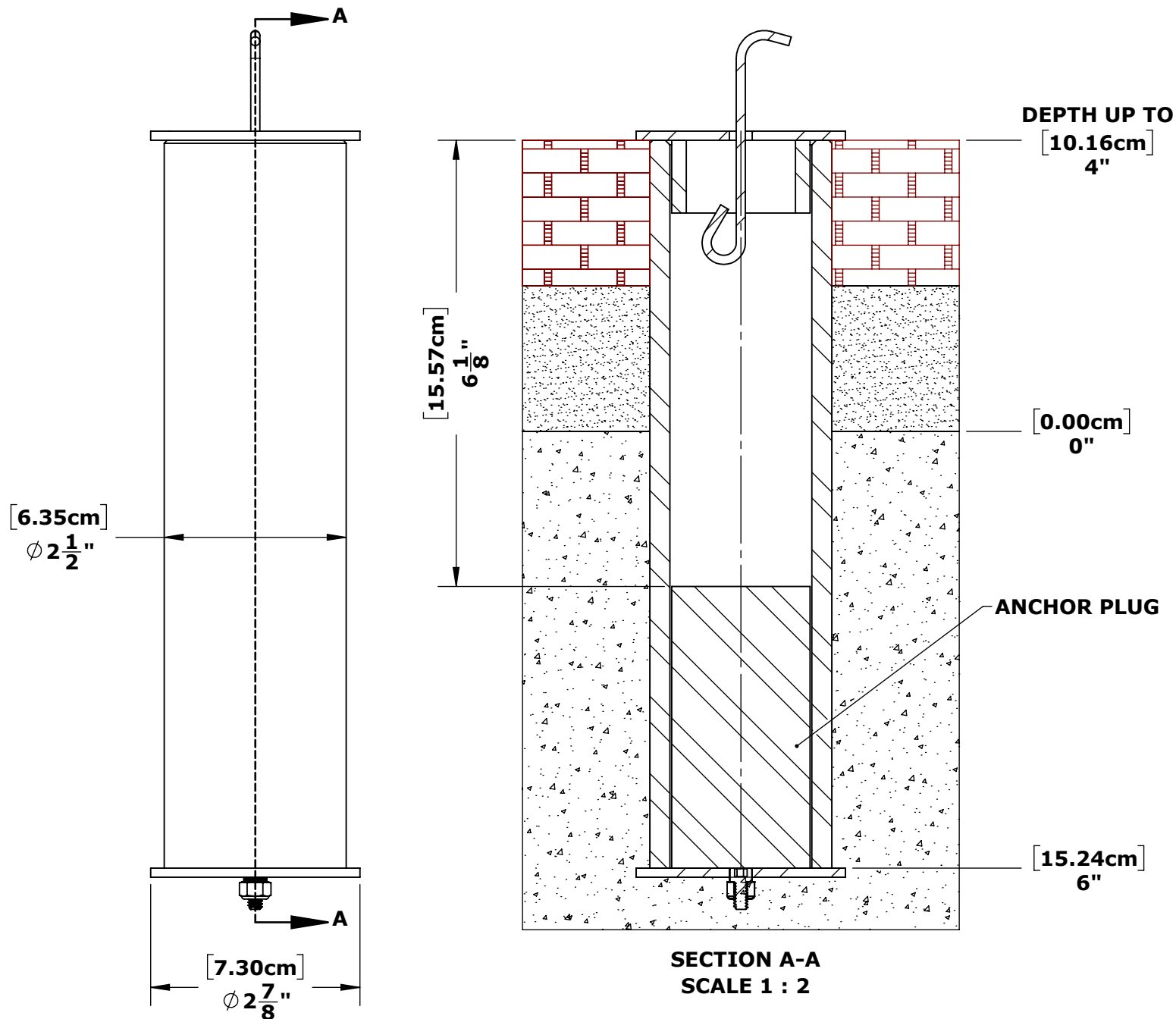


SPECIFICATIONS:

THE EZ SERIES LIFT ANCHOR SHALL BE CONSTRUCTED OF STAINLESS STEEL WITH A BONDING LUG. THE O.D. OF THE ANCHOR SHALL BE 2 1/2" [6.35cm], AND SHALL ACCOMMODATE A 1.90" [4.83cm] DIAMETER, 6" [15.2cm] LONG POST. A PROTECTIVE, STAINLESS STEEL CAP SHALL BE INCLUDED FOR WHEN NOT IN USE.



TOLERANCES

DIMENSIONS ARE IN INCHES
UNLESS OTHERWISE SHOWN
FRACTIONAL: ±1/16
ANGULAR: ±1°
TWO PLACE DECIMAL: ±.01
THREE PLACE DECIMAL: .. ±.005

ANCHOR - 1.90"X10.00"

F-30220
PART NO. INV01439

MATERIAL: 304 STAINLESS STEEL
FINISH: MILL
APPROX. WEIGHT: 9.52 LBS.



9889 GARRYMORE LANE
MISSOULA, MT 59808
(406) 549-0769
FAX (406) 549-2602
www.AquaCreek.com

PROPRIETARY AND CONFIDENTIAL INFORMATION

THIS DRAWING AND ALL INFORMATION CONTAINED HEREIN IS THE SOLE PROPERTY OF AQUA CREEK PRODUCTS LLC. ANY REPRODUCTION IN PART OR AS A WHOLE WITHOUT WRITTEN PERMISSION FROM AQUA CREEK IS PROHIBITED.

*SPECIFICATIONS ARE SUBJECT TO CHANGE WITHOUT NOTICE

REVISIONS

REV.	DESCRIPTION	DATE	APPROVED
P1	INITIAL RELEASE	4/7/2021	J.MAXWELL
P2	CHANGED MATERIAL TO STAINLESS STEEL	1/11/2022	J.MAXWELL

ANCHOR - 1.90"X10.00" - INV01439

51-163-220

SCALE
1:2

SHEET
1