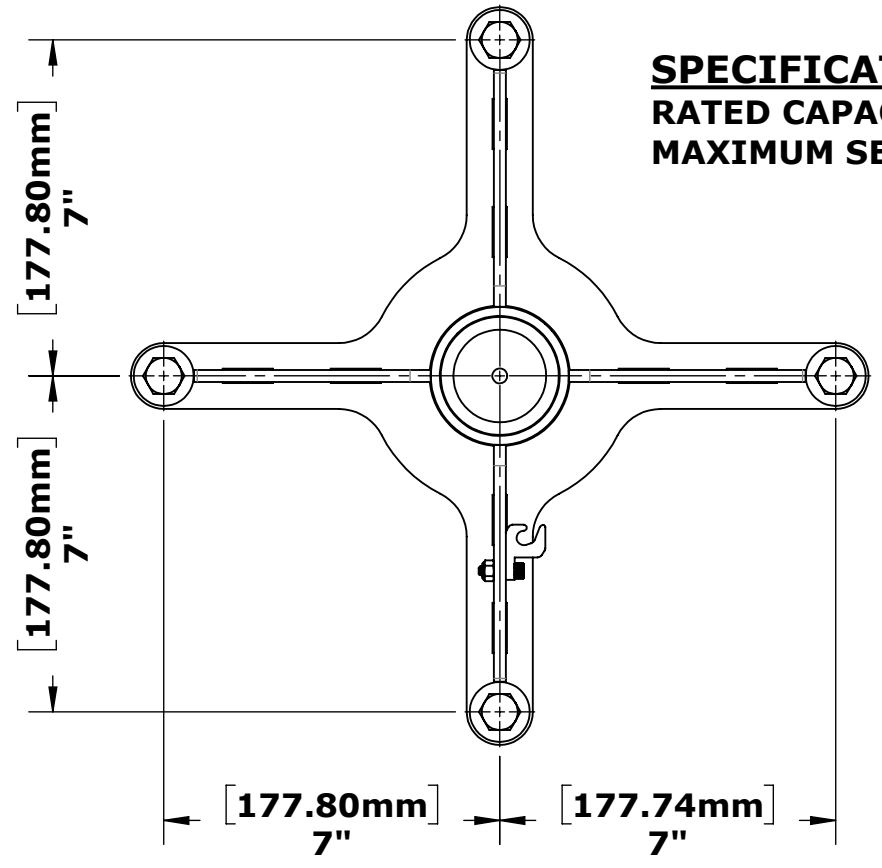


**SPECIFICATIONS:**  
**RATED CAPACITY: 400LBS. [181KG.]**  
**MAXIMUM SETBACK: 20" [508mm]**



**BOLT - HEX 1/2"-13X1 1/2"**  
**PART NO. INV00388**

**WASHER - FLAT 1/2"**  
**PART NO. INV01169**

**SLEEVE - 1.90 I.D. X 2.46 O.D. X 5.86**  
**PART NO. INV01598**

**ANCHOR CAP - REMOVAL TOOL**  
**PART NO. INV01512**

**ANCHOR CAP**  
**PART NO. INV00803**

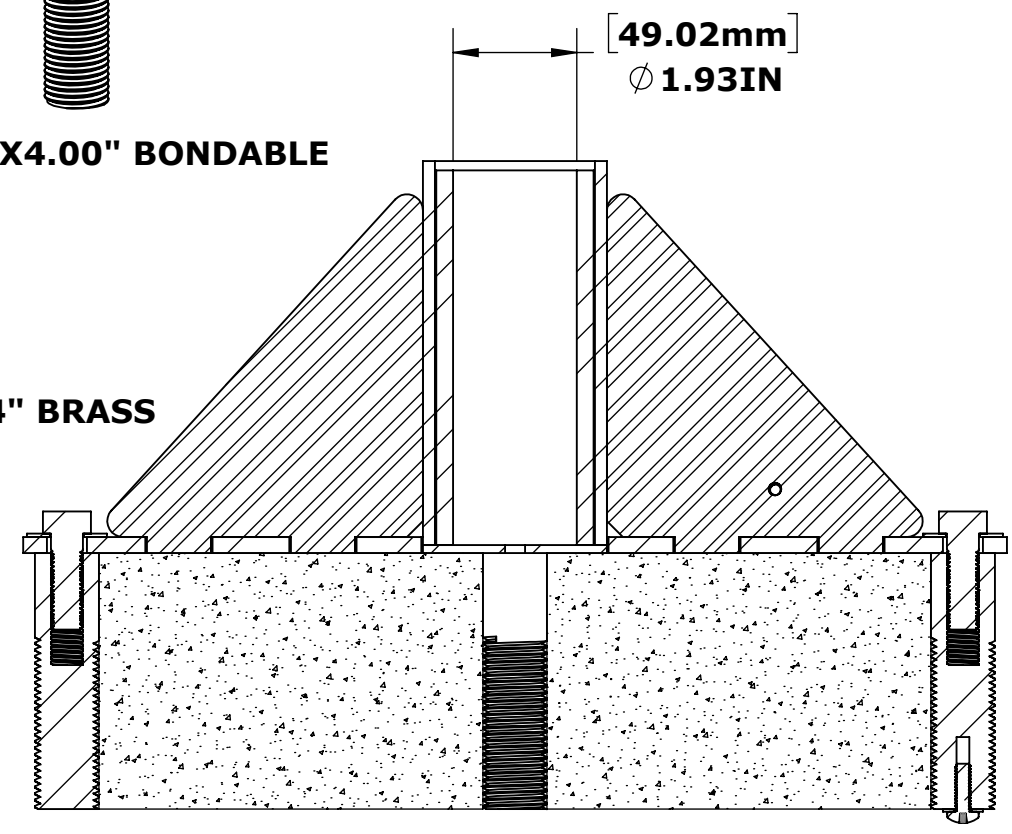
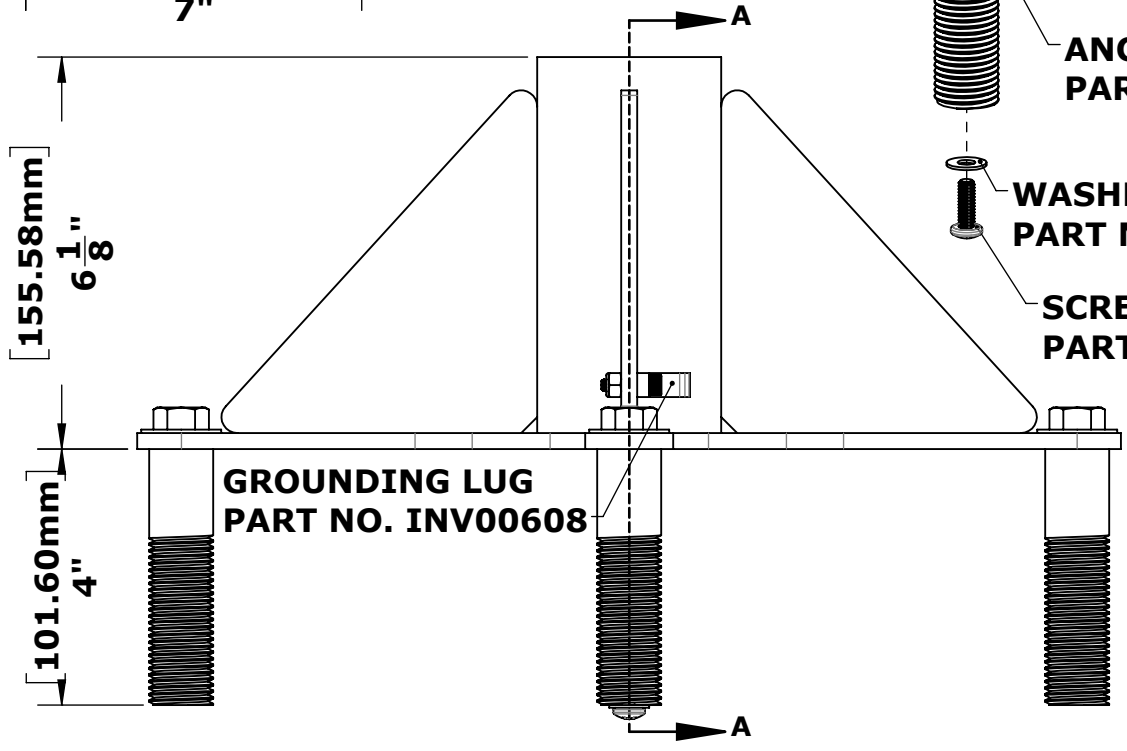
**ANCHOR - INSERT 1.00"X4.00" NON-BOND.**  
**PART NO. INV01579**

**ANCHOR - INSERT 1.00"X4.00" BONDABLE**  
**PART NO. INV01582**

**WASHER - FLAT 1/4"**  
**PART NO. INV01170**

**SCREW - PH 1/4"-20X3/4" BRASS**  
**PART NO. INV02361**

**GROUNDING LUG**  
**PART NO. INV00608**



**TOLERANCES**  
 DIMENSIONS ARE IN INCHES  
 UNLESS OTHERWISE SHOWN  
 FRACTIONAL: ..... ±1/16  
 ANGULAR: ..... ±1°  
 TWO PLACE DECIMAL: .... ±.01  
 THREE PLACE DECIMAL: .. ±.005

**ANCHOR - SURFACE MOUNT - 1.90"X6.00"**  
**CATALOG NO. F-035EZSM**  
**PART NO. INV01390**

**MATERIAL: 304 STAINLESS STEEL**  
**FINISH: POWDER COAT - WHITE**  
**APPROX. WEIGHT: 0.180 LBS.**



**9889 GARRYMORE LANE**  
**MISSOULA, MT 59808**  
**(406) 549-0769**  
**FAX (406) 549-2602**  
**www.AquaCreek.com**

**PROPRIETARY AND CONFIDENTIAL INFORMATION**  
 THIS DRAWING AND ALL INFORMATION CONTAINED HEREIN IS THE SOLE PROPERTY OF AQUA CREEK PRODUCTS LLC. ANY REPRODUCTION IN PART OR AS A WHOLE WITHOUT WRITTEN PERMISSION FROM AQUA CREEK IS PROHIBITED.

REVISIONS			
REV.	DESCRIPTION	DATE	APPROVED
P1	PRODUCTION RELEASE	6/2/2021	J.MAXWELL