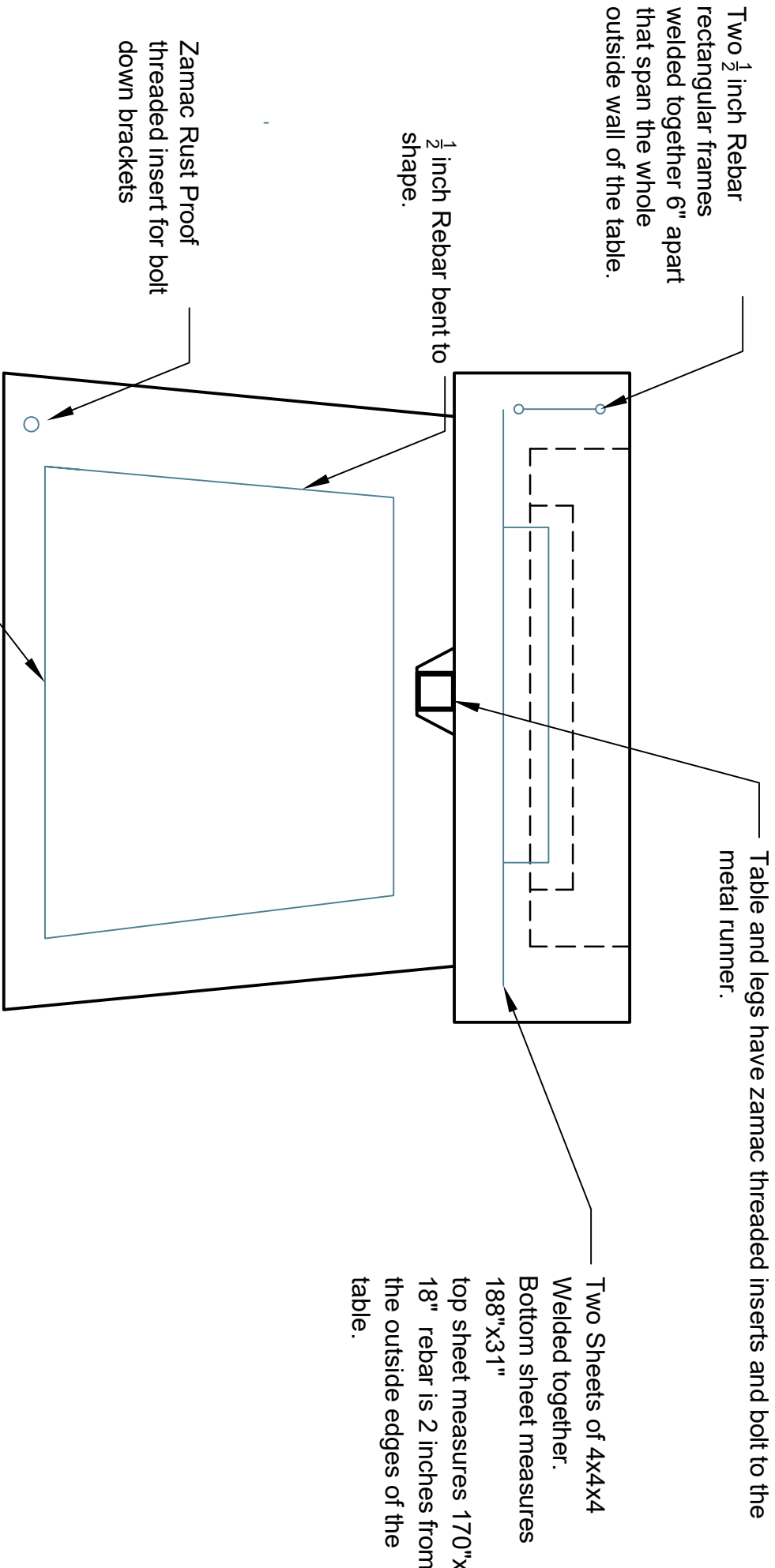


16' Shuffleboard Table



Two 1/2 inch Rebar rectangular frames welded together 6" apart that span the whole outside wall of the table.

1/2 inch Rebar bent to shape.

Zamac Rust Proof threaded insert for bolt down brackets

Table and legs have zamac threaded inserts and bolt to the metal runner.

Two Sheets of 4x4x4 Welded together.
Bottom sheet measures 188"x31"
top sheet measures 170"x18"
rebar is 2 inches from the outside edges of the table.

ALL Concrete is 5000+ PSI with Masterfiber Mac 2200, FiberMesh 150 fiber reinforcement, and Fritz Pak Supercizer 7.

16' Shuffleboard Shop drawing
Drawn by: Joshua James
Date: 3/4/2019
Property of: Bravado Outdoor Products LLC