

TRIA



TRIA

Material	Stock Finishes	Guarantee	Installation
Stainless Steel	PLS SEE COLOUR KEY CHART - Click for Link	20 Years	Vertical

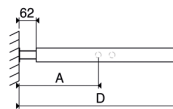
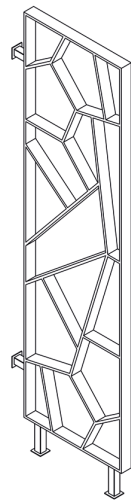
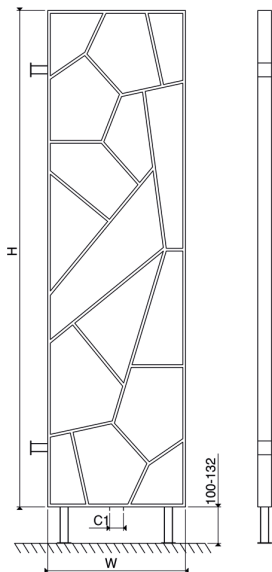
PRODUCT CODE	Height (mm)	Width (mm)	Sections	Pipe Centers (mm)	Wall to pipe Centers	Wall Distance	Nett Weight (kg)	Water Content (lt)	Fuel Type	Heat Outputs	
	H	W	n	C1	A (mm)	D (mm)				Watts	BTU
TRA 0500180021	1800	500	21	50	287	562	15,8	6,5	C	1074	3664

Please add finishing code at the end of the product code

Code example : TRA 0500180021 STP

Fuel type i.e

C: Central Heating
E: Electrical Heating
D: Dual Heating (C+E)



n = number of sections

Max. working pressure

10 bar

Max. working temperature

95 °C

Connections

1/2"

Pipe centers

C1

50 mm