

FAME HORIZONTAL



FAME HORIZONTAL

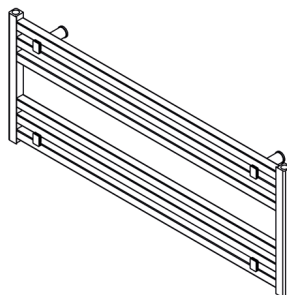
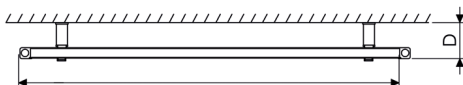
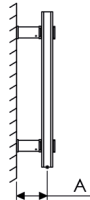
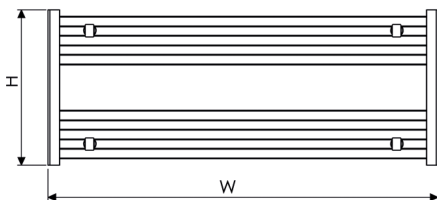
| | | | |
|-----------------|---|------------------|---------------------|
| Material | Stock Finishes | Guarantee | Installation |
| Aluminium | PLS SEE COLOUR KEY CHART - Click for Link | 5 Years | Horizontal |

| PRODUCT CODE | Height (mm) | Width (mm) | Sections | Pipe Centers (mm) | Wall to pipe Centers | Wall Distance | Nett Weight | Water Content | Fuel Type | Heat Outputs | |
|---------------|-------------|------------|----------|-------------------|----------------------|---------------|-------------|---------------|-----------|--------------|------|
| | H | W | n | C1 | A (mm) | D (mm) | (kg) | (lt) | | Watts | BTU |
| FME 100040006 | 400 | 1000 | 6 | 975 | 79-99 | 93-113 | 5.1 | 1.5 | C | 460 | 1571 |

Please add finishing code at the end of the product code

Code example : FME 100040006 PLS

Fuel type i.e.,
 C: Central heating
 E: Electrical heating
 D: Dual heating (C+E)



A full range of made to order sizes available.

Please ask for details.

n = number of sections

Max. working pressure

10 bar

Max. working temperature

95 °C

Connections

½"

Section width

27 mm

Section depth

28 mm

Pipe center

C1 W - 25 mm