

PRODUCT DATASHEET

TAC-101

Catina 500mm ceramic basin

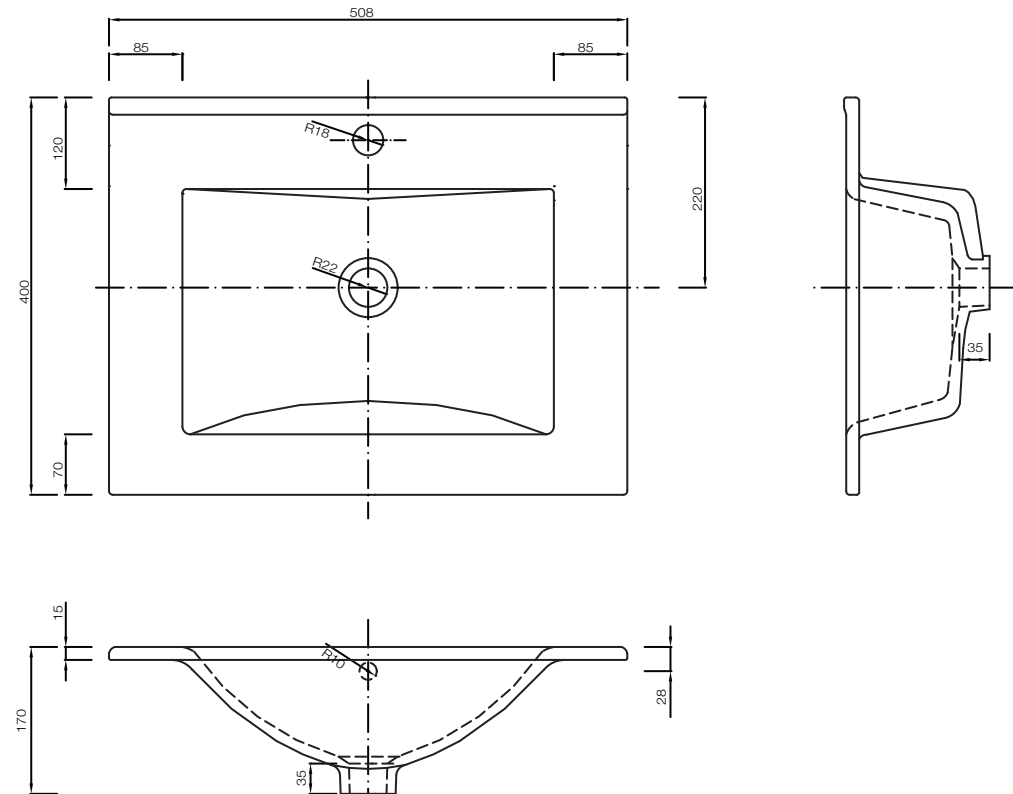
tissino

Designed to Inspire
Made to Experience



A contemporary ceramic basin to complement Tissino bathroom cabinets.

TECHNICAL DRAWING



PRODUCT DETAILS

Finishes	Gloss white	
Dimensions	Width	508 mm
	Depth	400 mm
	Height	170 mm
Material	Glazed ceramic	
Waste connection	Ø44 mm	
Tap hole	Ø36 mm	
Overflow	Integral	
Weight	10 kg	
Warranty	10 years	
Code	TAC-101	

See separate datasheets for information on complementary furniture and brassware.

tissino

Lyncastle Road, Appleton Thorn, Warrington WA4 4SN

info@tissino.co.uk

+44 (0) 345 582 8000

tissino.co.uk



YOUR BATHROOM
MADE BEAUTIFUL

