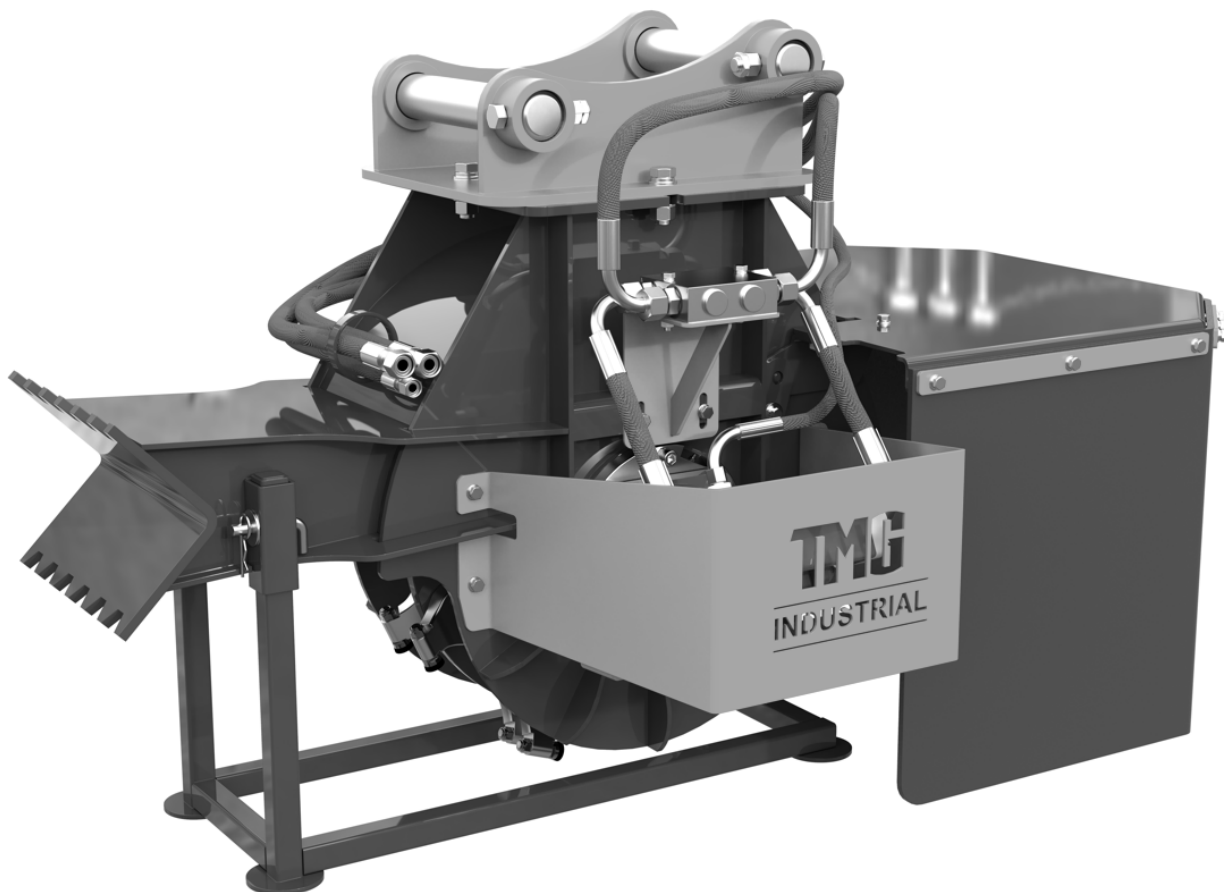
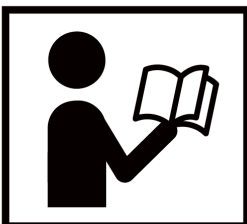


18" EXCAVATOR STUMP GRINDER



⚠ WARNING



- Please read and understand the product manual completely before assembly
- Check against the parts list to make sure all parts are received
- Wear proper safety goggles or other protective gears while in assembly
- Do not return the product to dealer. They are not equipped to handle your requests.

Missing parts or have questions on assembly?

Please call: 1-877-761-2819 or email: cs@tmgindustrial.com

CONTENTS

IMPORTANT SAFETY INFORMATION	3
YOUR SAFETY	3
GENERAL SAFETY	3
EQUIPMENT SAFETY GUIDELINES	4
SAFETY TRAINING	5
SAFETY SIGNS	5
SAFETY DECALS	6
PREPARATION	6
MAINTENANCE SAFETY	7
HYDRAULIC SAFETY	7
TRANSPORT SAFETY	8
TO THE NEW OPERATOR OR OWNER	8
OPERATION	8
MOUNTING COUPLER	8
GRINDER	9
MAINTENANCE	10
BEFORE EVERY USE	10
EVERY WEEK	10
AFTER EVERY SEASON	10
CUTTING TEETH REMOVAL & REPLACEMENT	10
HYDRAULIC SYSTEM	11
BOLT TORQUE	11
SPECIFICATION	12
SPECIFICATIONS & CAPACITIES	12
PARTS LIST	13
18" EXCAVATOR STUMP GRINDER ASSEMBLY	13
ESG18 SPARE PARTS LIST	14
CUTTING WHEEL ASSEMBLY	15
HYDRAULIC COMPONENTS	16

IMPORTANT SAFETY INFORMATION

Your Safety

YOU are responsible for the SAFE operation and maintenance of your TMG EXCAVATOR Skeleton. YOU must ensure that you and anyone else who is going to use, maintain or work around the EXCAVATOR Skeleton be familiar with the using and maintenance procedures and related SAFETY information contained in this manual. This manual will take you step-by-step through your working day and alerts you to all good safety practices that should be used while using the EXCAVATOR Skeleton. Remember, YOU are the key to safety. Good safety practices not only protect you but also the people around you. Make these practices a working part of your safety program. Be certain that EVERYONE using this equipment is familiar with the recommended using and maintenance procedures and follows all the safety precautions. Most accidents can be prevented. Do not risk injury or death by ignoring good safety practices.

1. EXCAVATOR Skeleton owners must give operating instructions to operators or employees before allowing them to operate the machine, and at least annually thereafter.
2. The most important safety device on this equipment is a SAFE operator. It is the operator's responsibility to read and understand ALL Safety and Operating instructions in the manual and to follow these. Most accidents can be avoided.
3. A person who has not read and understood all using and safety instructions is not qualified to use the machine. An untrained operator exposes himself and bystanders to possible serious injury or death.
4. Do not modify the equipment in any way. Unauthorized modification may impair the function and/or safety and could affect the life of the equipment.
5. Think SAFETY! Work SAFELY!

General Safety

1. Read and understand the Operator's Manual and all safety signs before using, maintaining, adjusting, or cleaning the EXCAVATOR Skeleton.
2. Have a first-aid kit available for use should the need arise and know how to use it.
3. Have a fire extinguisher available for use should the need arise and know how to use it.
4. Do not allow riders.
5. Wear appropriate protective gear. This list includes but is not limited to:

- A hard hat
- Protective shoes with slip resistant soles
- Heavy gloves



- Wet weather gear
- Hearing Protection



6. Install and secure all guards before starting.
7. Wear suitable ear protection for prolonged exposure to excessive noise.
8. Turn machine off, stop and disable engine, remove ignition key and place in your pocket, set park brake and wait for all moving parts to stop before servicing, adjusting, repairing, or unplugging.
9. Clear the area of people, especially small children, before using the unit.
10. Review safety related items annually with all personnel who will operating or maintaining the EXCAVATOR Skeleton.

Equipment Safety Guidelines

1. Safety of the operator and bystanders is one of the main concerns in designing and developing equipment. However, every year many accidents occur which could have been avoided by a few seconds of thought and a more careful approach to handling equipment. You, the operator, can avoid many accidents by observing the following precautions in this section. To avoid personal injury or death, study the following precautions and insist those working with you, or for you to follow them.
2. In order to provide a better view, certain photographs or illustrations in this manual may show an assembly with a safety shield removed. However, equipment should never be used in this condition. Keep all shields in place. If shield removal becomes necessary for repairs, replace the shield prior to use.
3. Replace any safety sign or instruction sign that is not readable or is missing. Location of such safety signs is indicated in this manual.
4. Never use alcoholic beverages or drugs which can hinder alertness or coordination while using this equipment. Consult your doctor about using this machine while taking prescription medications.
5. Under no circumstances should young children be allowed to work with this equipment. Do not allow persons to use or assemble this unit until they have read this manual and have developed a thorough understanding of the safety precautions and of how it works. Review the safety instructions with all users annually.
6. This equipment is dangerous to children and persons unfamiliar with its operation. The operator should be a responsible, properly trained and physically able person familiar with machinery and trained in this equipment's operations. If the elderly are assisting with work, their physical limitations need to be recognized and accommodated.
7. Never exceed the limits of a piece of machinery.
8. If its ability to do a job, or to do so safely, is in question - DON'T TRY IT.
9. Do not modify the equipment in any way. Unauthorized modification may result in serious injury or death and may impair the function and life of the equipment.

10. In addition to the design and configuration of this implement, including Safety Signs and Safety Equipment, hazard control and accident prevention are dependent upon the awareness, concern, prudence, and proper training of personnel involved in the operation, transport, maintenance, and storage of the machine. Refer also to Safety Messages and operation instruction in each of the appropriate sections of the EXCAVATOR and machine manuals. Pay close attention to the Safety Signs affixed to the EXCAVATOR and the machine.

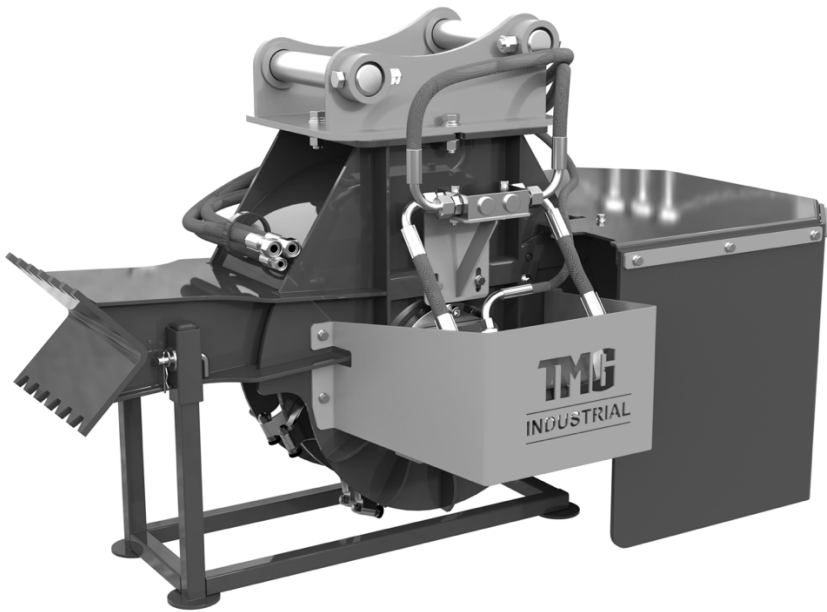
Safety Training

1. Safety is a primary concern in the design and manufacture of our products. Unfortunately, our efforts to provide safe equipment can be wiped out by a single careless act of an operator or bystander.
2. In addition to the design and configuration of equipment, hazard control and accident prevention are dependent upon the awareness, concern, prudence, and proper training of personnel involved in the operation, transport, maintenance, and storage of this equipment.
3. It has been said, "The best safety feature is an informed, careful operator." We ask you to be that kind of an operator. It is the operator's responsibility to read and understand ALL Safety and Using instructions in the manual and to follow these. Accidents can be avoided.
4. If this machine is used by any person other than yourself, or is loaned or rented, it is the machine owner's responsibility to make certain that the operator, prior to using:
 - a. Reads and understands the operator's manuals.
 - b. Is instructed in safe and proper use.
5. Know your controls and how to stop the EXCAVATOR tractor and machine quickly in an emergency. Read this manual and the one provided with EXCAVATOR tractor.
6. Train all new personnel and review instructions frequently with existing workers. Be certain only a properly trained and physically able person will use the machinery. A person who has not read and understood all using and safety instructions is not qualified to use the machine. An untrained operator exposes himself and bystanders to possible serious injury or death. If the elderly is assisting with the work, their physical limitations need to be recognized and accommodated.

Safety Signs

1. Always keep safety signs clean and legible.
2. Replace safety signs that are missing or have become illegible.
3. Replaced parts that displayed a safety sign should also display the current sign.
4. Safety signs have a part number in the lower righthand corner. Use this part number when ordering replacement parts.
5. Safety signs are available from your authorized Distributor or Dealer Parts Department or the factory.

Safety Decals



Preparation

1. Never use the machine until you have read and completely understand this manual, the EXCAVATOR tractor Operator's Manual and each of the Safety Messages found on the safety signs on the EXCAVATOR tractor and machine.
2. Personal protection equipment including hard hat, safety glasses, safety shoes, and gloves are recommended during assembly, installation, operation, adjustment, maintaining, repairing, removal, cleaning, or moving the unit. Do not allow long hair, loose fitting clothing or jewelry to be around equipment.
3. **PROLONGED EXPOSURE TO LOUD NOISE MAY CAUSE PERMANENT HEARING LOSS!**
 - a) Power equipment with or without equipment attached can often be noisy enough to cause permanent, partial hearing loss. We recommend that you wear hearing protection on a full-time basis if the noise in the Operator's position exceeds 80db. Noise over 85db on a long-term basis can cause severe hearing loss. Noise over 90db adjacent to the Operator over a long-term basis may cause permanent, total hearing loss. NOTE: Hearing loss from loud noise (from tractors, chain saws, radios, and other such sources close to the ear) is cumulative over a lifetime without hope of natural recovery.
4. Clear working area of stones, branches or hidden obstacles that might be hooked or snagged, causing injury or damage.
5. Use only in daylight or good artificial light.
6. Be sure machine is properly mounted, adjusted and in good operating condition.
7. Ensure that all safety shielding, and safety signs are properly installed and in good condition.

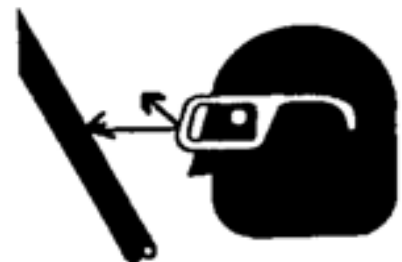
Maintenance Safety

1. Good maintenance is your responsibility. Poor maintenance is an invitation to trouble.
2. Follow good shop practices.
 - a) Keep service area clean and dry.
 - b) Be sure electrical outlets and tools are properly grounded.
 - c) Use adequate light for the job at hand.
3. Make sure there is plenty of ventilation. Never operate the engine of the towing vehicle in a closed building. The exhaust fumes may cause asphyxiation.
4. Before working on this machine, shut off the engine, set the brake, and turn fuel valve off.
5. Never work under equipment unless it is blocked securely.
6. Always use personal protection devices such as eye, hand and hearing protectors, when performing any service or maintenance work. Use heavy or leather gloves when handling blades.
7. Where replacement parts are necessary for periodic maintenance and servicing, genuine factory replacement parts must be used to restore your equipment to original specifications. The manufacturer will not be responsible for injuries or damages caused by use of unapproved parts and/or accessories.
8. A fire extinguisher and first aid kit should be kept readily accessible while performing maintenance on this equipment.
9. Periodically tighten all bolts, nuts and screws and check that all electrical and fuel connections are properly secured to ensure unit is in a safe condition.
10. When completing a maintenance or service function, make sure all safety shields and devices are installed before placing unit in service.



Hydraulic Safety

1. Make sure that all the components in the hydraulic system are kept in good condition and are clean.
2. Before applying pressure to the system, make sure all components are tight, and that lines, hoses and couplings are not damaged.
3. Do not attempt any makeshift repairs to the hydraulic lines, fittings, or hoses by using tapes, clamps or cements. The hydraulic system operates under extremely high pressure. Such repairs will fail suddenly and create a hazardous and unsafe condition.
4. Wear proper hand and eye protection when searching for a high-pressure hydraulic leak. Use a piece of wood or cardboard as a backstop instead of hands to isolate and identify a leak.



5. If injured by a concentrated high-pressure stream of hydraulic fluid, seek medical attention immediately. Serious infection or toxic reaction can develop from hydraulic fluid piercing the skin surface.
6. Relieve pressure on hydraulic system before maintaining or working on system.



Transport Safety

1. Comply with state and local laws governing safety and transporting of machinery on public roads.
2. Check that all the lights, reflectors and other lighting requirements are installed and in good working condition.
3. Do not exceed a safe travel speed. Slow down for rough terrain and cornering.
4. Do not drink and drive.
5. Be a safe and courteous driver. Always yield to oncoming traffic in all situations, including narrow bridges, intersections, etc. Watch for traffic when operating near or crossing roadways.

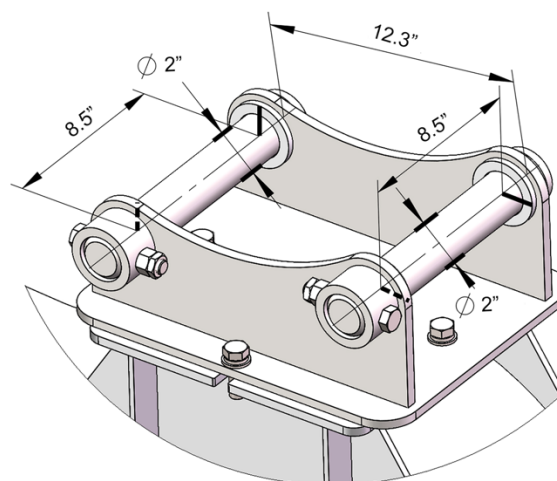
To the New Operator or Owner

Follow all safety instructions exactly. Safety is everyone's business. By following recommended procedures, a safe working environment is provided for the operator, bystanders, and the area around the worksite. Untrained operators are not qualified to operate the machine.

Many features incorporated into this machine are the result of suggestions made by customers like you. Read this manual carefully to learn how to use the chipper safely and how to set it to provide maximum field efficiency. By following the using instructions in conjunction with a good maintenance program, your EXCAVATOR Skeleton will provide many years of trouble-free service.

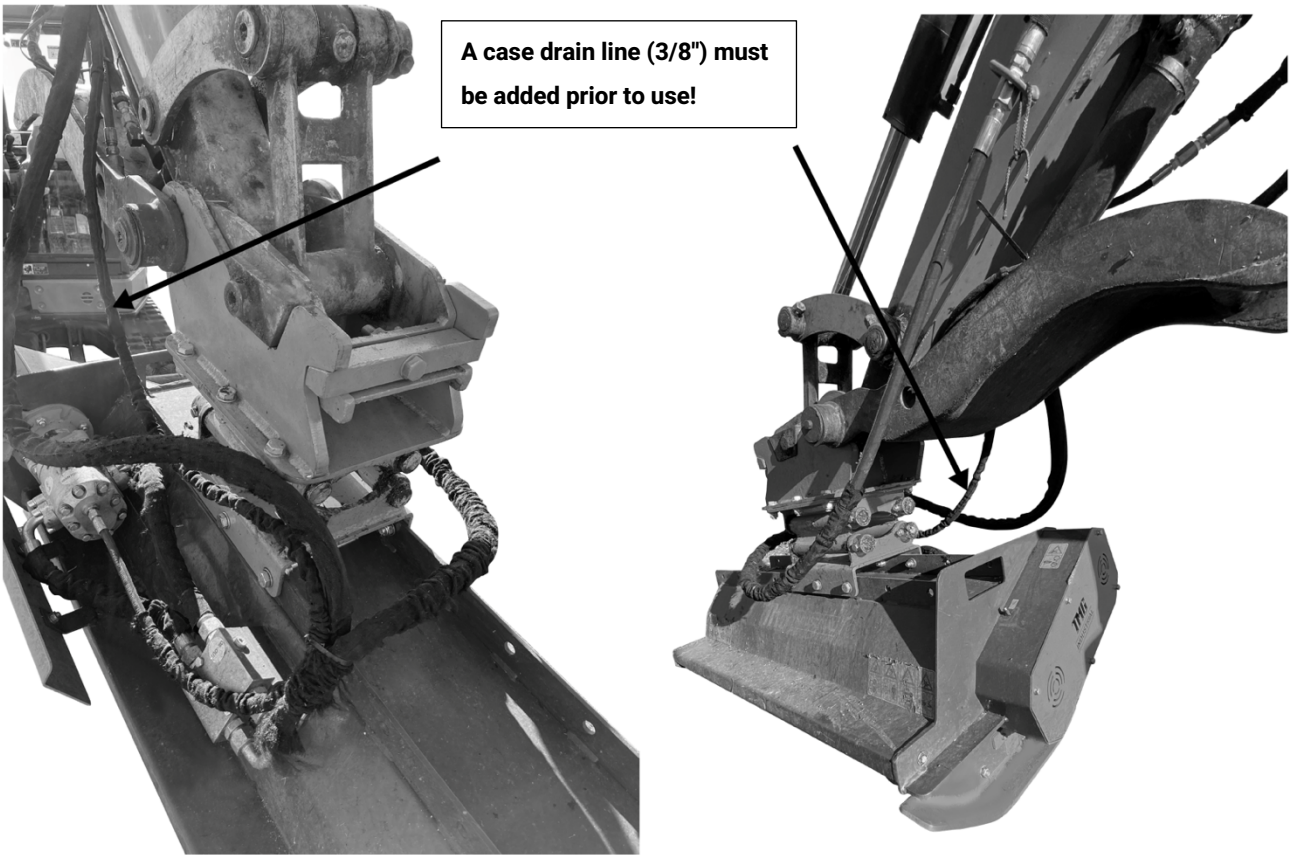
OPERATION

Mounting coupler



High Attention!

A case drain line (3rd hose line--3/8") is required to be added prior to use of this attachment. The case drain line will relieve the excess pressure and drain it back to your return line, then into the reservoir. Without a case drain line installed properly, that extra pressure will blow a seal or damage your hydraulic line.

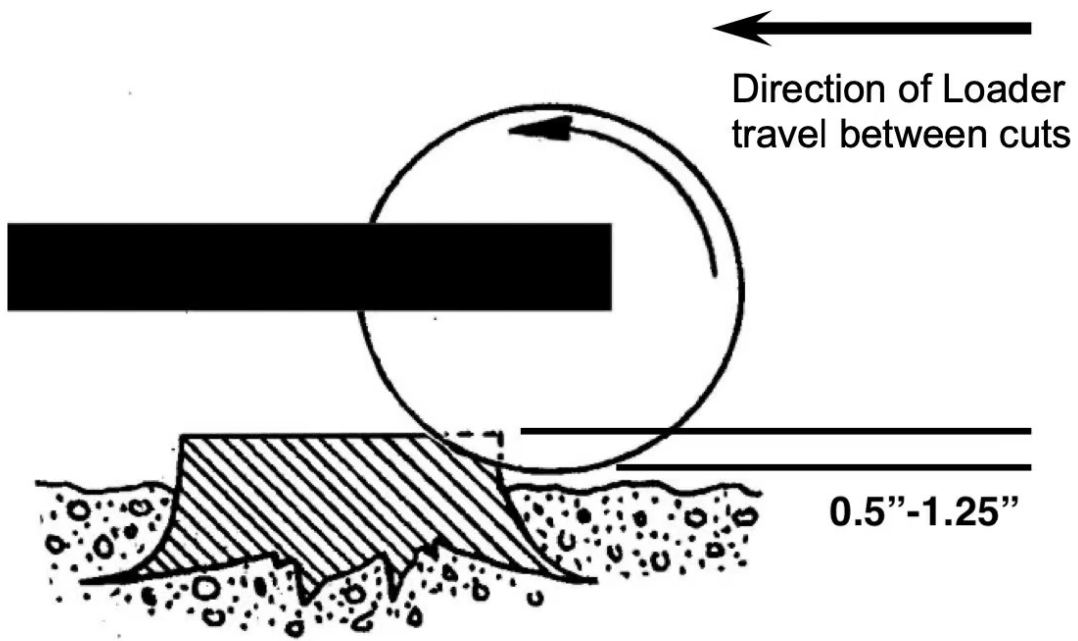


Grinder

The cutting height should be 0.5"-1.25". we think the customer cutting more than 1.25", that makes grinder working slowly.

The grinder should work from right to left or left to right. grinder parallel not vertical.

When the attachment has completed a pass, move it rearward about 0.5"-1.25" and engage the control to cut back across in the opposite direction. Never directly up to down.



First Cut

MAINTENANCE

Before Every Use

Check hydraulic hoses and fittings daily for leaks. Replace hose if worn or damaged. Investigate the location of any oil leaks and repair. Lubricate all joints with lithium grease.

Inspect the unit for any buildup of contamination (dirt, stones, etc.).

Check cutting teeth every 2 hours of use. Keep cutting teeth in good condition. Unit will cut faster and remaining teeth will last longer if broken teeth are replaced.

Check that all fasteners (nuts, bolts, pins, keepers) are in their right place and are tight. Inspect and replace any worn, torn, or missing safety decals.

Every Week

Check the condition of the teeth base and/or teeth. Order parts if the cutting edge or points are becoming worn and replace as soon as possible.

After Every Season

Inspect the implement for any loose or worn parts that may need to be replaced prior to the next season.

Visually inspect the teeth. Replace, if necessary.

Clean, sand & repaint any area that looks worn or scratched to prevent further rusting. Use an equipment-paint found at your local hardware store or building center.

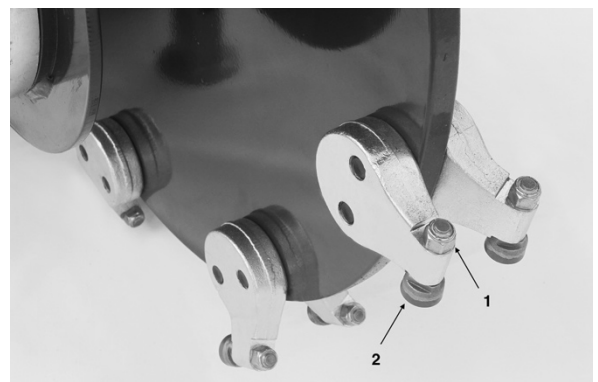
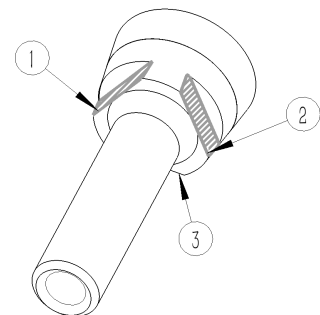
Replace any warning decals that have been lost or damaged.

Store your implement in a shed or cover with a water-proof tarp to protect it from the weather. Store in an area not frequented by children.

Cutting teeth Removal & Replacement

1. Support stump grinder to prevent falling.
2. Stop skid steer engine and remove key.
3. Inspect cutting teeth for damage. Rotated the tooth 3 times before replace it.
4. Replace individual teeth as needed.
5. Remove lock nut (1) and cutting tooth (2)
6. Rotated the tooth or install replacement tooth and lock nut.

Tighten locknut (1) to 95 lb./ft. (129 Nm) of torque. Do not allow untrained or unqualified people to operate this equipment.



WARNING!

To avoid an accident that could result in Death or Serious Injury, never find yourself in a position where any body part is located under an unsupported blade or frame when servicing this attachment.

WARNING!

Hazardous dust can be generated if painted surfaces are heated or welded and could result in death or Serious Injury. Remove paint before welding and always make repairs in a well-ventilated area and wear an approved respirator.

CAUTION!

Cutting edges can be very heavy and could cause Minor or Serious Injury if mishandled. Always wear protective gloves and footwear.

1. Weld-on cutting edge replacement is not a task for most machinery operators and should be referred to a welding shop that possesses the proper equipment, knowledge, and experience.
2. Replacement cutting edges are available from your dealer.

Hydraulic System**WARNING!**

A small stream of oil from a pinhole leak could penetrate your skin if contacted. To avoid an accident that could result in Death or Serious Injury, never use your hand or other body parts in an attempt to locate a hydraulic leak.

NOTICE!

Always release the hydraulic system pressure from the hydraulic circuits prior to removing the attachment or any hydraulic system service work.

Bolt Torque**CHECKING BOLT TORQUE**

The tables shown below give correct torque values for various bolts and cap screws. Tighten all bolts to the torques specified in chart unless otherwise noted. Check tightness of bolts periodically, using bolt torque chart as a guide. Replace hardware with the same strength bolt.

Torque figures indicated above are valid for non-greased or non-oiled threads and heads unless otherwise specified. Therefore, do not grease or oil bolts or cap screws unless otherwise specified in this manual. When using locking elements, increase torque values by 5%.

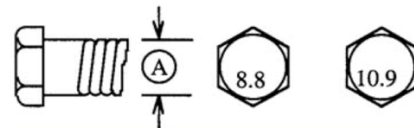
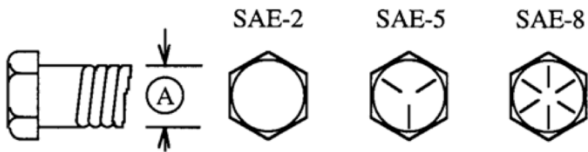
* Torque value for bolts and cap screws are identified by their head markings

ENGLISH TORQUE SPECIFICATIONS

Bolt Diameter "A"	Bolt Torque*					
	SAE 2 (N.m) (lb-ft)		SAE 5 (N.m) (lb-ft)		SAE 8 (N.m) (lb-ft)	
1/4"	8	6	12	9	17	12
5/16"	13	10	25	19	36	27
3/8"	27	20	45	33	63	45
7/16"	41	30	72	53	100	75
1/2"	61	45	110	80	155	115
9/16"	95	60	155	115	220	165
5/8"	128	95	215	160	305	220
3/4"	225	165	390	290	540	400
7/8"	230	170	570	420	880	650
1"	345	225	850	630	1320	970

METRIC TORQUE SPECIFICATIONS

Bolt Diameter "A"	Bolt Torque*			
	8.8 (N.m) (lb-ft)		10.9 (N.m) (lb-ft)	
M3	.5	.4	1.8	1.3
M4	3	2.2	4.5	3.3
M5	6	4	9	7
M6	10	7	15	11
M8	25	18	35	26
M10	50	37	70	52
M12	90	66	125	92
M14	140	103	200	148
M16	225	166	310	229
M20	435	321	610	450
M24	750	553	1050	774
M30	1495	1103	2100	1550
M36	2600	1917	3675	2710



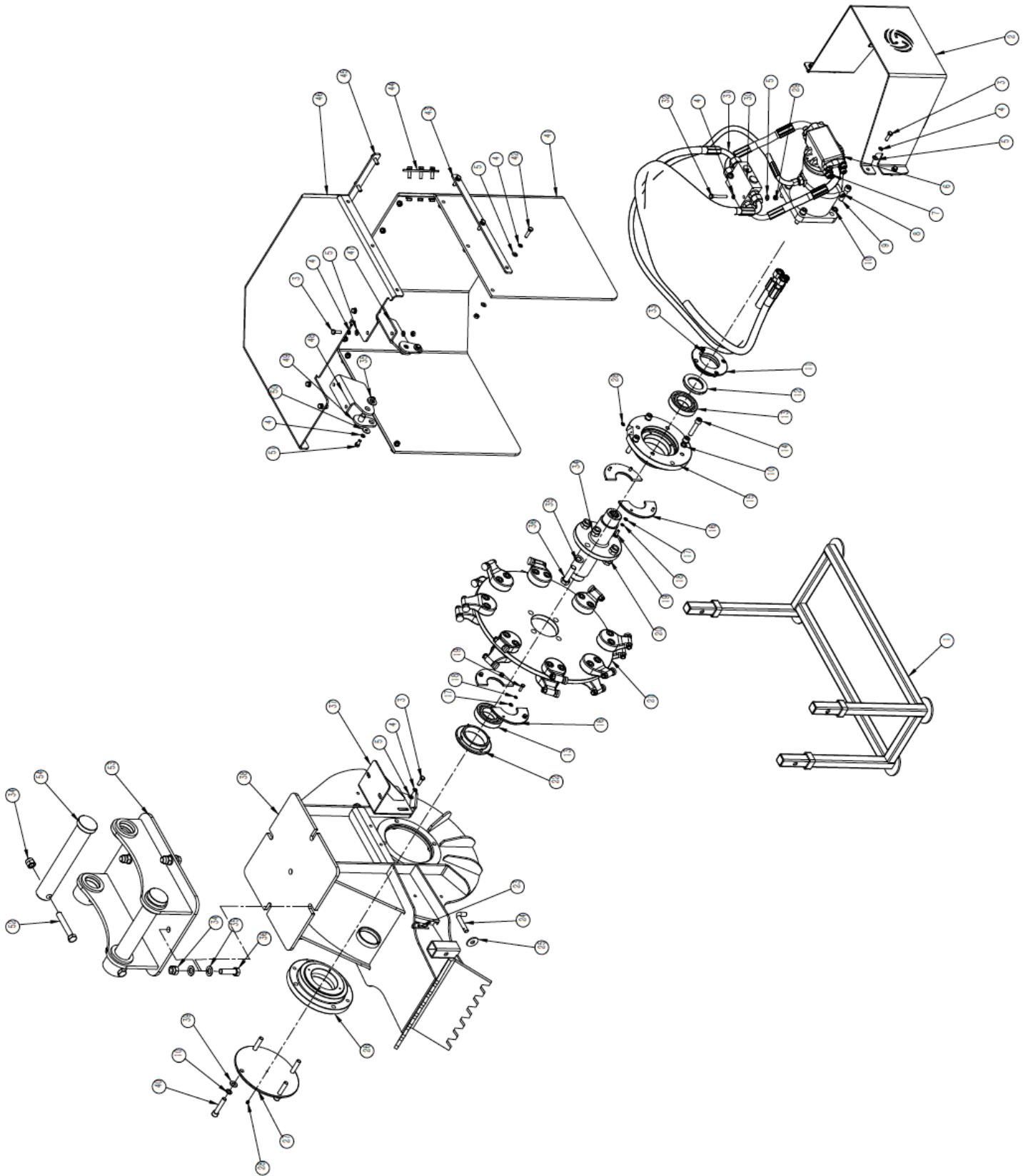
SPECIFICATION

Specifications & Capacities

- Runs on 3-to-7-ton excavators
- Reversible teeth, rotated 3 times before needing to be replaced; forged steel with carbide face
- Includes a kickstand to keep the implement level while unhitched
- Oil leakage line necessary
- Overall Height: 34"
- Overall Length: 55"
- Overall Width: 33"
- Number of Cutting Teeth: 16
- Cutting Wheel Diameter: 18.5"
- Cutting Wheel Width: 0.63"
- Cutting Wheel Speed: 850-1,350 RPM
- Hydraulic Flow: 13-20 GPM
- Product Weight: 723 lb.(328kg)
- Shipping weight: 830 lb.(376kg)
- Shipping dimension: 58" x 37" x 36"(1475*940*918mm)

PARTS LIST

18" excavator stump grinder Assembly

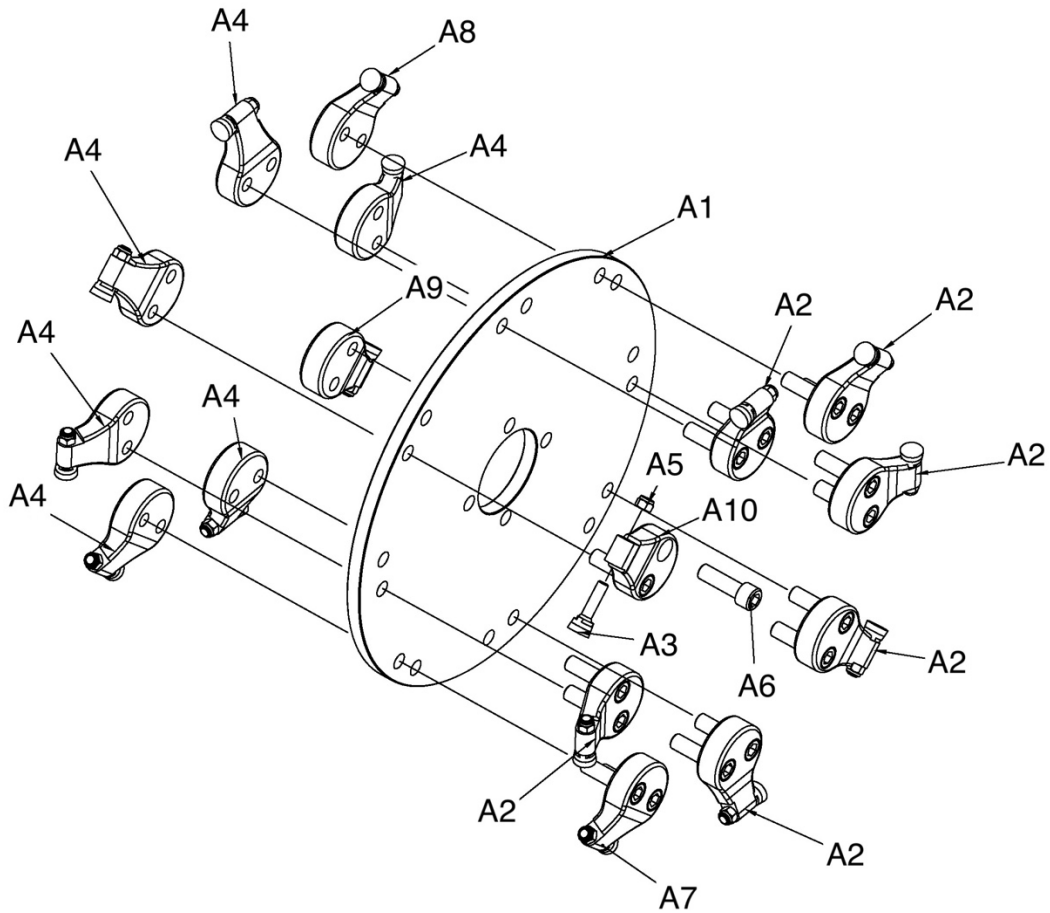


ESG18 spare parts list

Part No.	Ref.	Part Description	QTY
1	ESG47.13	Support leg	1
2	ESG47.10	Motor cover	1
3	GB/T 5783	Bolt M8*25	8
4	GB/T 93	SPRING WASHER 8	4
5	GB/T 97.1	Washer 8	2
6	A2F55W2Z2	HYD MOTOR	1
7	GB/T 93	SPRING WASHER 10	48
8	GB/T 70.1	Hex Bolt M10*35	8
9	GB/T 70.1	Hex Bolt M12*45	10
10	GB/T 93	SPRING WASHER 12	8
11	ESG47.11	Backing plate 02	1
12	GB / T 13871.1	Oil seal 50*80*8	1
13	GB/T 276-2013	Bearing 6210-RS	2
14	GB/T 70.1	Hex Bolt M12*55	8
15	ESG47.9	Bearing seat 02	1
16	ESG47.8	Bearing seat cover	4
17	GB/T 97.1	Washer 6	16
18	GB/T 93	SPRING WASHER 6	8
19	GB/T 5783	Bolt M6*20	8
20	ESG47.3	Shaft	1
21	ESG47.4	Cutting wheel assembly	1
22	ESG47.7	Backing plate 01	1
23	EFGC125.110	R Pin 3.2	3
24	EFGC175.37	Leg pin	3
25	GB/T 96	BIG WASHER 12	10
26	ESG47.6	Bearing seat 01	1
27	ESG47.5	Cover plate	1
28	JB/T 7940.1	Grease nipple M6	2
29	GB/T 6170	NUT M8	3
30	ESG47.1	Valve block	1
31	ESG47.14	Hydraulic components	1
32	GB/T 5783	Bolt M8*55	8
33	GB/T 70.3	Hex Bolt M6*16	2
34	GB/T 6182	LOCK NUT M16	2
35	GB/T 97.1	Washer 16	4
36	GB/T 5783	Bolt M16*55	4
37	ESG47.12	Valve mount plate	1
38	ESG47.2	The cover weldment	1
39	GB/T 97.1	Washer 12	4
40	GB/T 70.1	Hex Bolt M12*60	14
41	ESG47.18	Rubber flap	1
42	GB/T 5783	Bolt M8*35	1
43	ESG47.19	Press plate 01	2
44	ESG47.20	Press plate 02	2
45	ESG47.21	Press plate 03	1
46	ESG47.15	Guard Plate	1
47	ESG47.22	Guard Mounting Plate 02	1

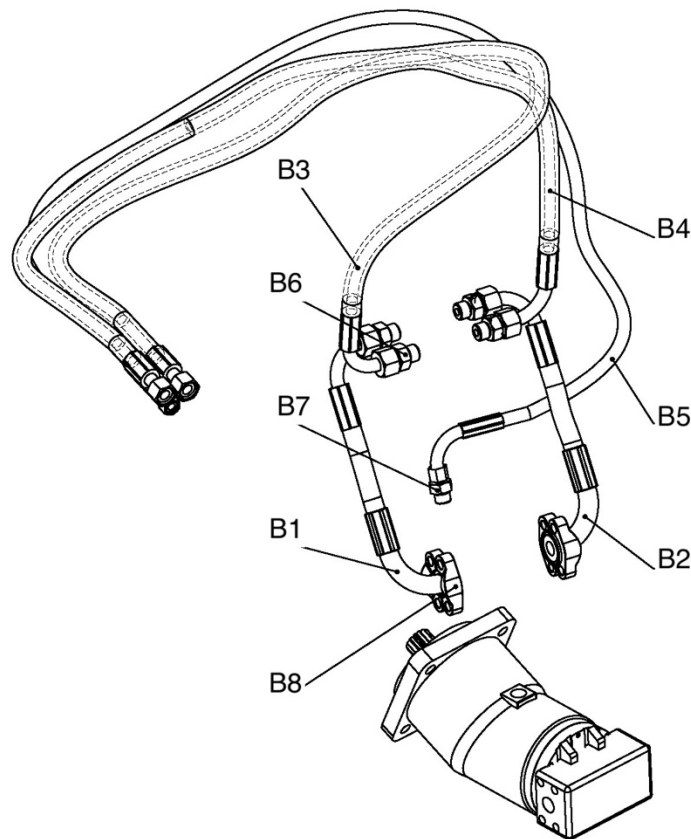
48	ESG47.16	Guard Mounting Plate 01	1
49	ESG47.17	Pin	2
50	GB/T 96	BIG WASHER 8	30
51	GB/T 5783	Bolt M8*16	12
52	GB/T 5783	Bolt M16*100	2
53	ESG47.30	Hook weldment	1
54	EXF1200.18	Pin	2

Cutting wheel assembly



Part No.	Ref.	Part Description	QTY
A1	ESG47.4-7	Cutting wheel	1
A2	ESG47.4-2	Teeth base900-2	6
A3	ESG47.4-8	Teeth 900	16
A4	ESG47.4-3	Teeth base900-3	6
A5	ASME B18.16.6	Nylon Insert Lock Nuts	16
A6	ASME B18.3	HEX SOCKET HEAD BOLT	16
A7	ESG47.4-4	Teeth base900-4	1
A8	ESG47.4-5	Teeth base900-5	1
A9	ESG47.4-6	Teeth base900-6	1
A10	ESG47.4-1	Teeth base900-1	1

Hydraulic Components



Part No.	Ref.	Part Description	QTY
B1	ESG47.14-1	Hydraulic hose01 Length:292mm	1
B2	ESG47.14-2	Hydraulic hose02 Length:292mm	1
B3	ESG47.14-3TMG	Hydraulic hose03 Length:2000mm	1
B4	ESG47.14-4TMG	Hydraulic hose04 Length:2000mm	1
B5	ESG47.14-5TMG	Hydraulic hose05 Length:2000mm	1
B6	GE15LRED	END STRAIGHT JOINT G1/2"-M22*1.5	4
B7	G10LM18x1.5EDOMD	Connector M18*1.5-M16*1.5	1
B8	ISO6162-1/-2	Split flange FHS63 SAE	4