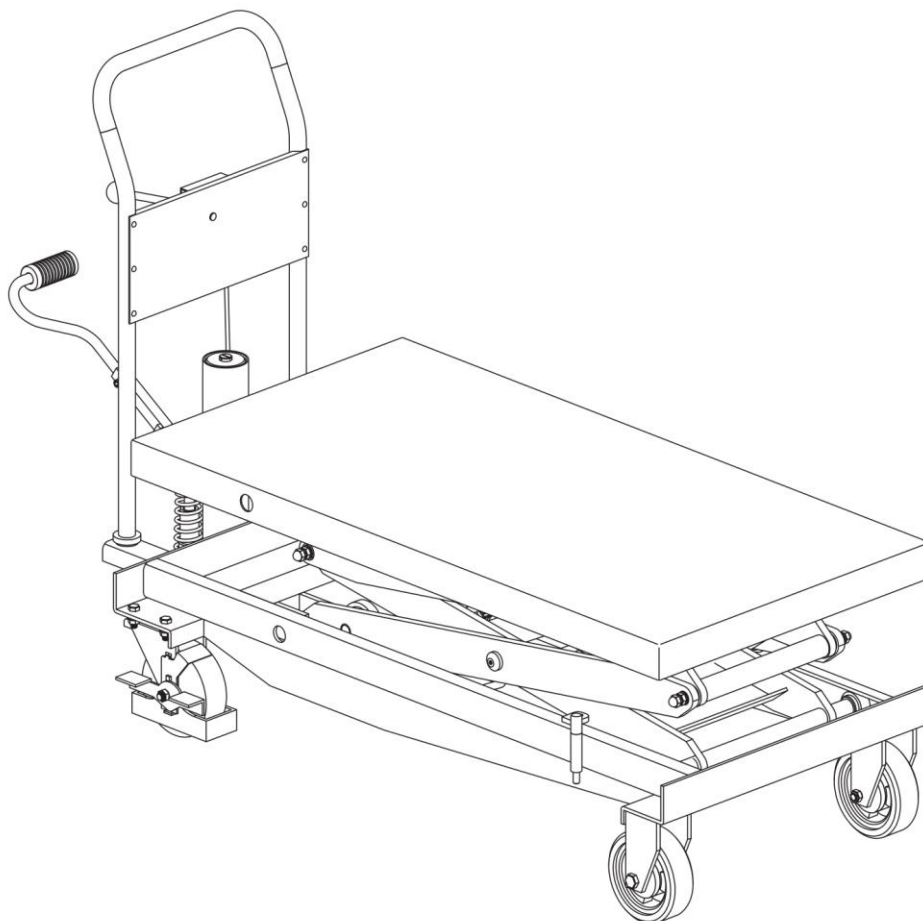


2200-LB MOBILE SCISSOR LIFT TABLE



WARNING



- Please read and understand the product manual completely before assembly
- Check against the parts list to make sure all parts are received
- Wear proper safety goggles or other protective gears while in assembly
- Do not return the product to dealer. They are not equipped to handle your requests.

Missing parts or have questions on assembly?
Please call: 1-877-761-2819 or email: cs@tmgindustrial.com

TECHNICAL SPECIFICATIONS

Model	TMG-ALS05
Rated load	1000 kg
Minimum Platform Height	500 mm
Maximum Height of platform after lifting	860 mm
Platform size	1200mm x 610mm x 60mm
Wheel size	Φ150mm × 50mm
Height of handle from the ground	1020mm
Times of platform lifting to max. pump pressure	≅ 145
Dead weight	190kg
Hydraulic Oil	ISO VG 15

SAFETY MARKINGS

Congratulations on your purchase of a TMG Industrial hydraulic lift table. With proper care this table should bring you years of service.

⚠ WARNING - Read, study and follow all instructions before operating this device. Failure to heed these instructions may result in personal injury and/or property damage.

Throughout this manual you will find the following symbols for caution, warning and danger. Pay particular attention to the notes preceded by these symbols as they are written for your safety. Ultimately, safe operation of this device rests with you, the operator.



Indicates a potentially hazardous situation which, if not avoided, may result in minor or moderate injury. This notation is also used to alert against unsafe practices.



Indicates a potentially hazardous situation which, if not avoided could result in death or serious injury.



If you find that the lifting range per stroke is too small: pls lift the table to 2/3 of the maximum height, then loosen oil plug" and then tighten it.

ASSEMBLY INSTRUCTIONS

1. Your Hydraulic Table is almost completely assembled when you open it. To complete the assembly find the parts above enclosed with your table.
2. Place the Lifting Pedal into the hole, Secure with Bolt to fix up.
3. Place the Push Handle into the tube of base assembly, secure with Bolt to fix up. With brake thread through the handle assembly and the hole on the base, then with Bolt to fix up on the release valve link bar.
4. Your assembly is complete! Use the rubber mat for the table toop when needed.

SAFETY PRECAUTIONS



WARNING-DO NOT EXCEED RATED CAPACITY

WARNING - Do not use the Hydraulic Table in lifting or moving or persons.

WARNING - This table was designed for use on hard, level surfaces capable of sustaining the load. Use on other than hard, level surfaces could result in load instability and possible loss of load resulting in property damage and personal injury.

DANGER - Keep clear of the scissor lifting frame beneath the table for lifting or lowering operations. Scissor lifts have pinch areas between the frames which can cause serious injury if hands or feet are not well clear of this area.

WARNING - Do not use attachments or adapters of any type to modify this lift.

SAFETY PRECAUTIONS

WARNING - Set the brakes on the rear casters when loading or unloading.

CAUTION - When not in use the table shall be fully lowered. Lock in a safe, dry place and keep away from children.

CAUTION - Do not over-reach. Keep loads evenly balance over the center of the table. Excessive loads on the top or sides of the table may be unstable with the danger of the table toppling over and causing injury or property damage.

WARNING - Failure to heed these warning may result in personal injury and/or property damage.

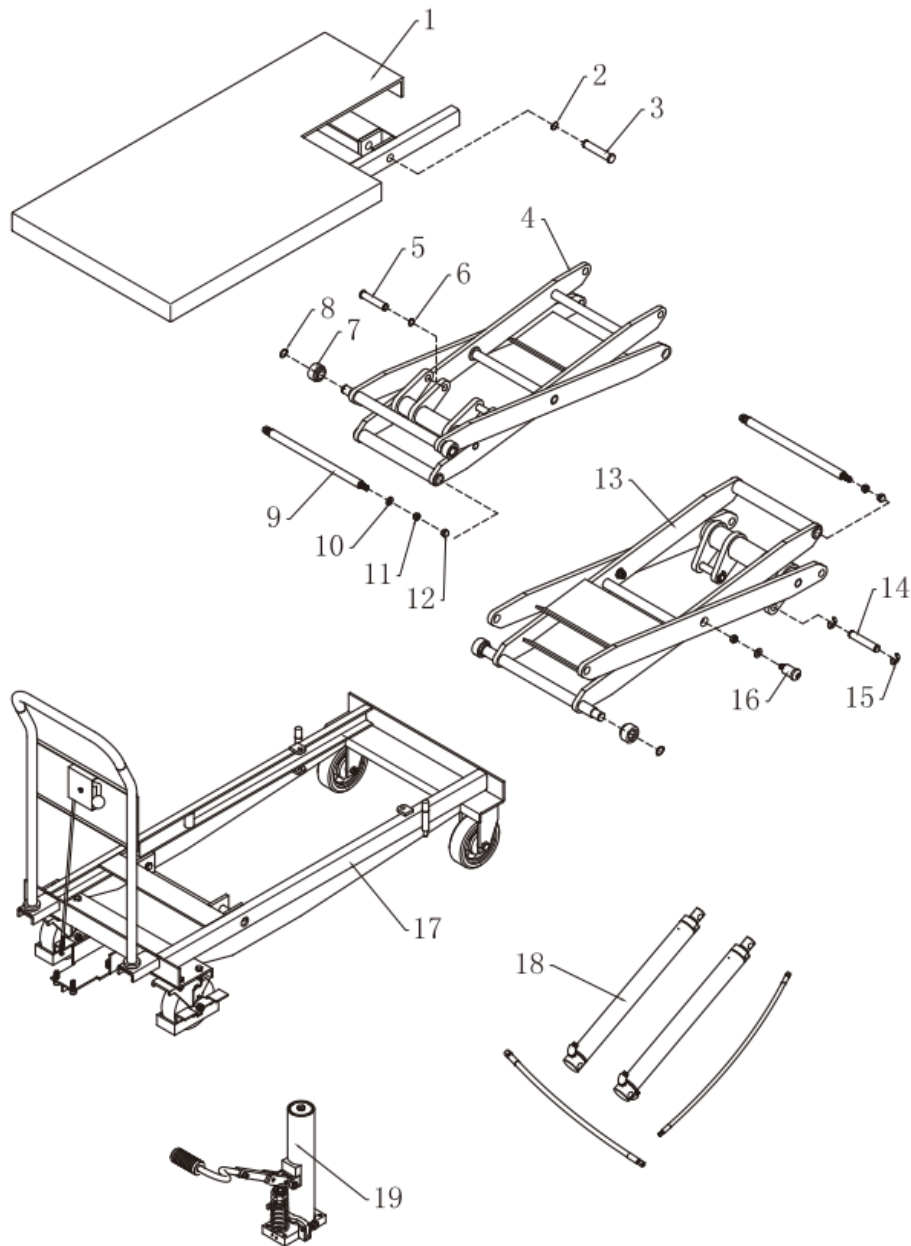
GENERAL TIPS FOR SAFE OPERATION

1. Keep work area clean. Cluttered work areas invite injury. Do not use in damp, wet or poorly lit locations.
2. Keep table wiped down and clean. Do not expose to prolonged wet or corrosive conditions.
3. Cover the table and store it in a dry, protected environment.

MAINTAINNENCE

1. Periodically check the tightness of mounting bolts and electrical connections. Remove all dirt or corrosion and always keep clean.
2. Lubricate the wheels to maintain smooth roiling.
3. Inspect all joints and bolts periodically. Remove from service if any cracking or if the frame is bent or deformed.

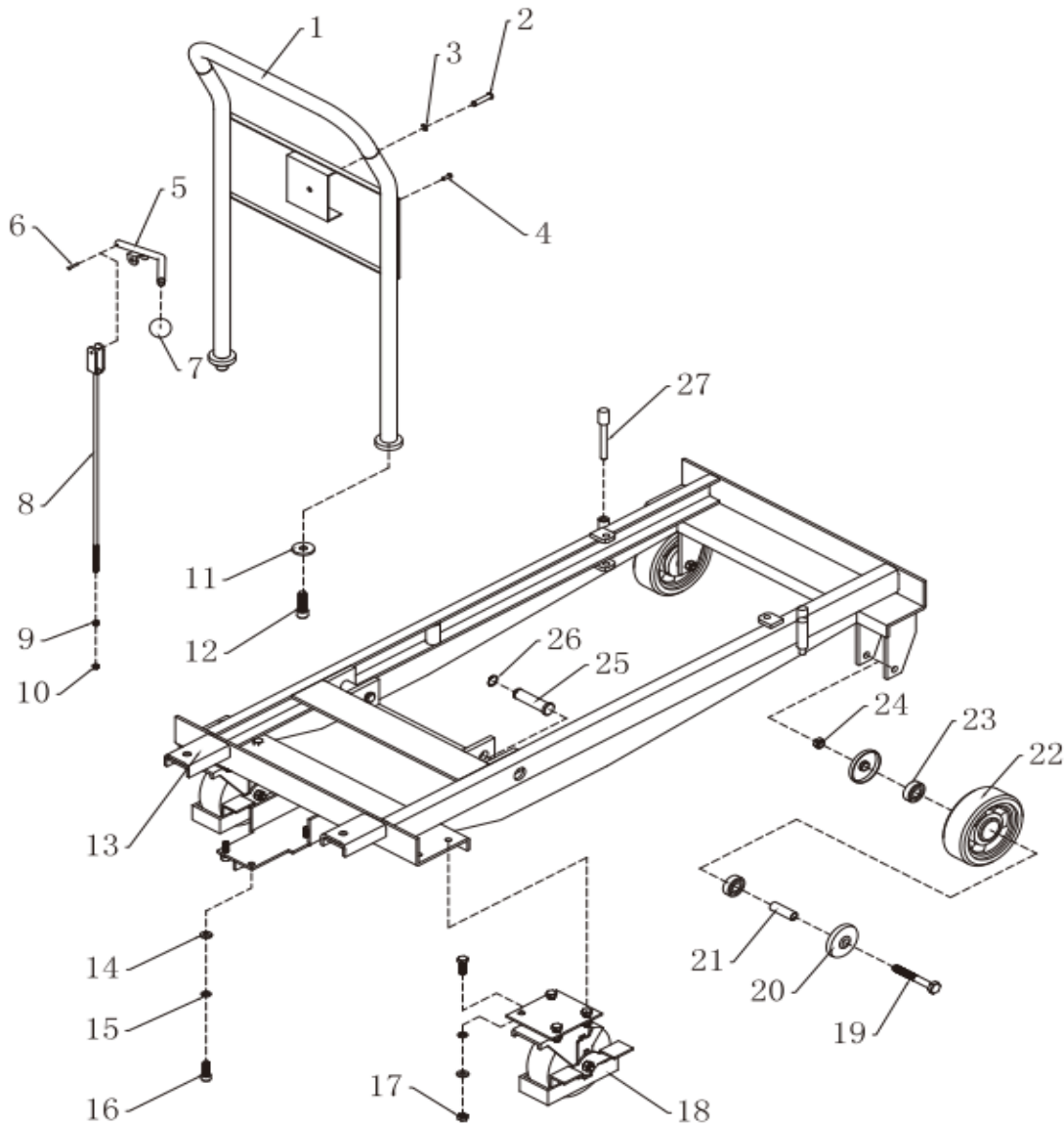
HYDRAULIC TABLE CART PARTS LIST (Figure A)



NO.	DESCRIPTION	QTY
A1	Platform plate weldment	1
A2	Shaft retaining ring $\Phi 20$	2
A3	Platform pin	2
A4	Lifting bracket weldment	1
A5	Lifting rod pin	2
A6	Shaft retaining ring $\Phi 18$	2
A7	Upper and lower rollers	4
A8	Shaft retaining ring $\Phi 22$	4
A9	Supporting shaft	2
A10	Flat cushion $\Phi 30$	6

NO	DESCRIPTION	QTY	REMARKS
A11	Jam nut M12	6	
A12	Cover nut M12	4	
A13	Lower lifting bracket weldment	1	
A14	Lifting cylinder pin	2	
A15	Split ring $\Phi 15$	4	
A16	Lower central axis	2	
A17	frame assembly	1	See fig. B
A18	Cylinder assembly	1	See fig. C
A19	External cylinder assembly	1	See fig. D

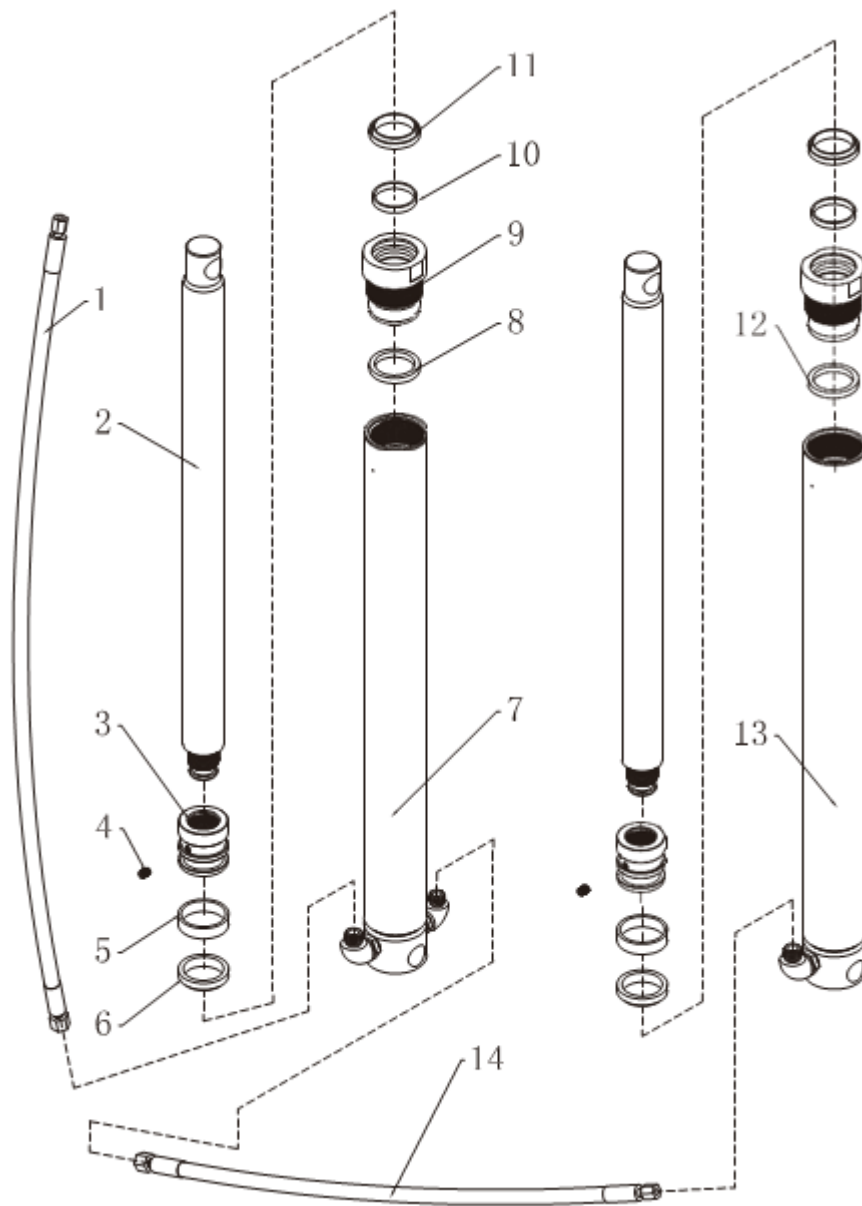
PARTS LIST (Figure B)



NO.	DESCRIPTION	QTY
B1	Handle weldment	1
B2	Handle pin	1
B3	Split ring $\Phi 6$	1
B4	Blind rivet $\Phi 5 \times 16$	6
B5	Control handle weldment	1
B6	Rivet $\Phi 3 \times 25$	1
B7	Bakelite handball	1
B8	Handle pull rod weldment	1
B9	NUT M6	1
B10	LOCK NUT M6	1
B11	Handle seat gasket	2
B12	Hexagon bolt M12 \times 40	2
B13	Frame weldment	1
B14	Flat cushion $\Phi 10$	11

NO.	DESCRIPTION	QTY
B15	Spring pad $\Phi 10$	11
B16	Hexagon bolt M10 \times 30	11
B17	Nut M10	8
B18	Rear wheel group $\Phi 150 \times 50$	2
B19	Hexagon bolt M12 \times 90	2
B20	Bearing cover	4
B21	Bolt sleeve	2
B22	front wheel	2
B23	Bearing 6203	4
B24	Jam nut M12	2
B25	Frame pin	2
B26	Shaft retaining ring $\Phi 20$	2
B27	Limit shaft	2

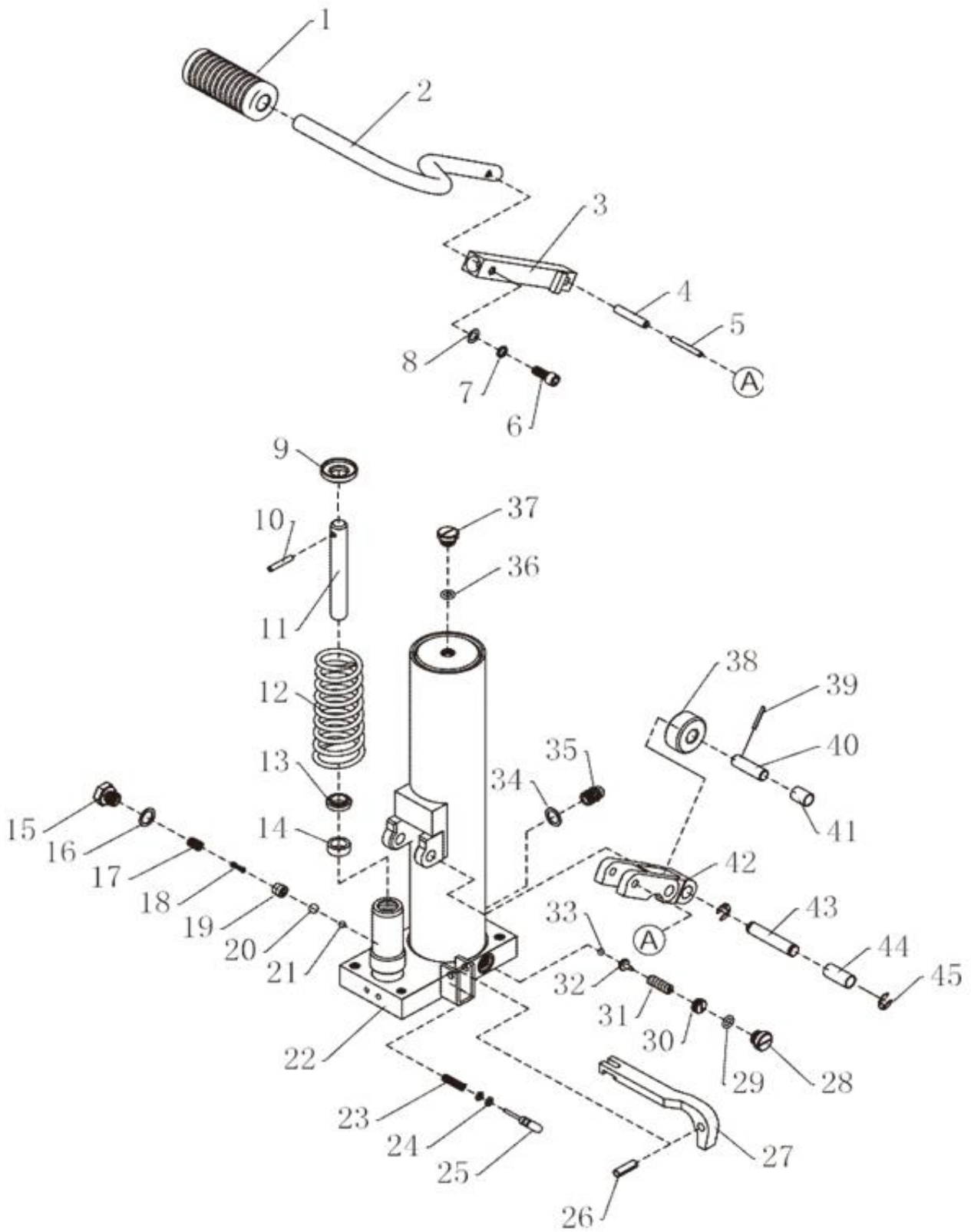
PARTS LIST (Figure C)



NO.	DESCRIPTION	QTY
C1	Tubing M14 × 1.5/800	1
C2	Lifting rod	1
C3	piston	1
C4	Hexagon socket flat end set screw M6 × 8	6
C5	Wear resistant belt d40 × D35 × 10	1
C6	Y-ring d40 × D32 × 8	1
C7	Lifting cylinder weldment 1	1

NO.	DESCRIPTION	QTY
C8	Cylinder top sleeve 2	11
C9	Cylinder nut	11
C10	Wear resistant belt d35 × D32 × 5.2	8
C11	Dust ring d40 × D32 × 5 / 6.5	2
C12	Cylinder top sleeve 1	2
C13	Lifting cylinder weldment 2	4
C14	Tubing M14 × 1.5/390	2

PARTS LIST (Figure D)



NO.	DESCRIPTION	QTY
D1	Rubber sleeve	1
D2	Pedal handle	1
D3	Rocker weldment	1
D4	Elastic pin $\Phi 8 \times 40$	1
D5	Cylindrical pin $\Phi 5 \times 40$	1
D6	Hexagon socket screw $M8 \times 20$	1
D7	Spring pad $\Phi 8$	1
D8	Flat cushion $\Phi 8$	1
D9	Spring pad	1
D10	Cylindrical pin $\Phi 5 \times 32$	1
D11	Compression bar	1
D12	Conical spring	1
D13	Dust ring $d24 \times D16 \times 4.5/6$	1
D14	Y-ring $d22 \times D16 \times 8$	1
D15	Oil valve sealing bolt	1
D16	Copper washer	1
D17	Valve sleeve spring	1
D18	Spool spring	1
D19	Valve sleeve	1
D20	Steel ball s $\Phi 9$	12
D21	Steel ball s $\Phi 6$	1
D22	Valve plate weldment	1
D23	Oil drain rod spring	2

NO.	DESCRIPTION	QTY
D24	O-ring $D8 \times 1.8$	2
D25	Oil drain rod	1
D26	Elastic pin $\Phi 8 \times 25$	1
D27	Swing bar	1
D28	Pressure regulating valve sealing screw	1
D29	O-ring $d11.2 \times 2.65$	1
D30	Pressure regulating screw	1
D31	Pressure regulating spring	1
D32	Pressure regulating spring seat	1
D33	Steel ball s $\Phi 6$	1
D34	Combined washer $\Phi 14$	1
D35	Straight joint $M14 \times 1.5$	1
D36	O-ring $d11.2 \times 2.65$	1
D37	Oil hole screw	1
D38	Roller	1
D39	Elastic pin $\Phi 3 \times 24$	1
D40	Compression axle	1
D41	Composite bushing $d12 \times D14 \times 18$	1
D42	Step on the lever	1
D43	Cylinder trunnion	1
D44	Composite bushing $d12 \times D14 \times 30$	1
D45	Split ring $\Phi 9$	2

WARRANTY INFORMATION:

Please refer to our website for detailed warranty conditions and coverage.

For the most up-to-date and comprehensive warranty information, visit www.tmgindustrial.com