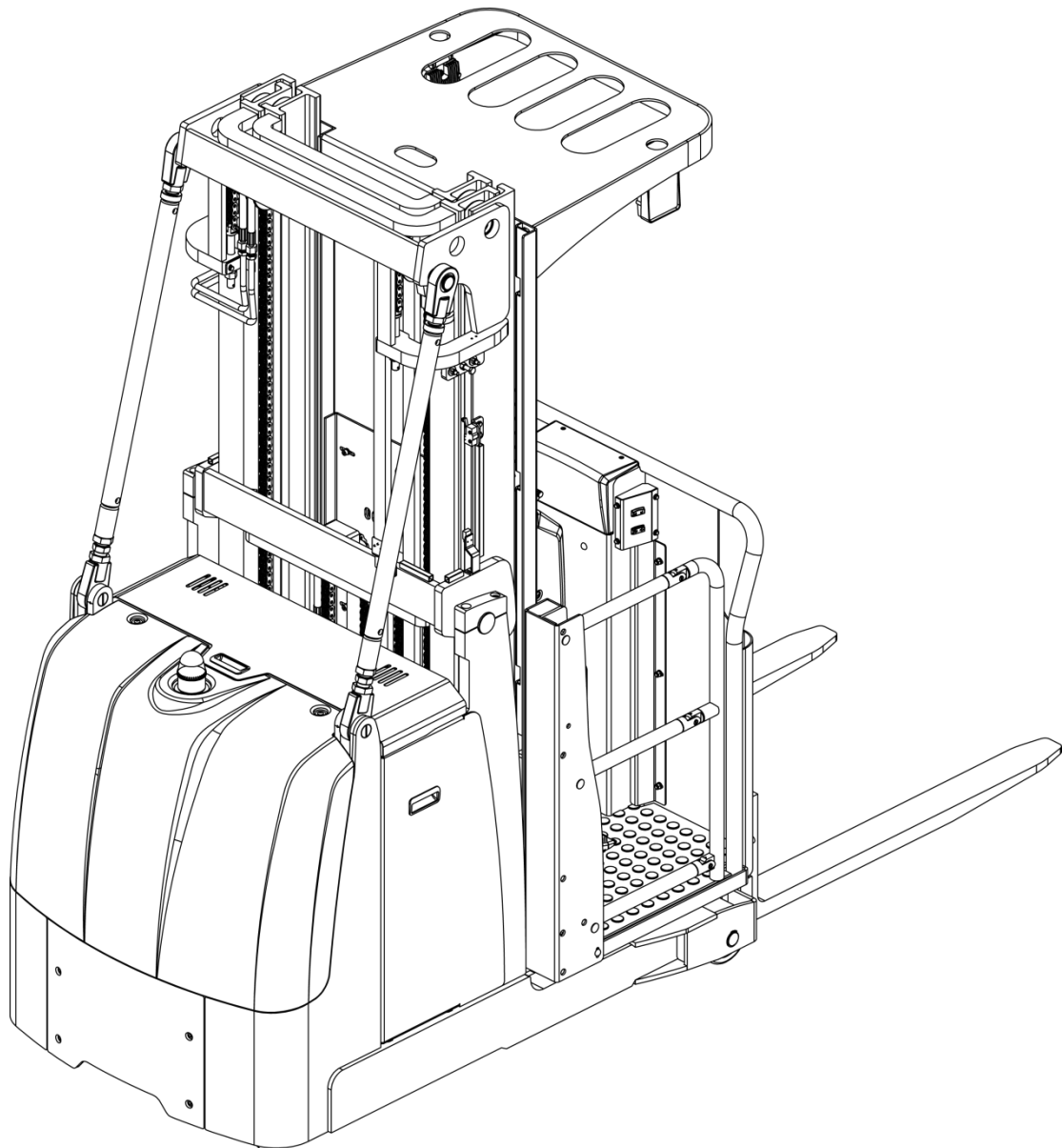




## PART LIST

High level order picker

EOP68/EOP70



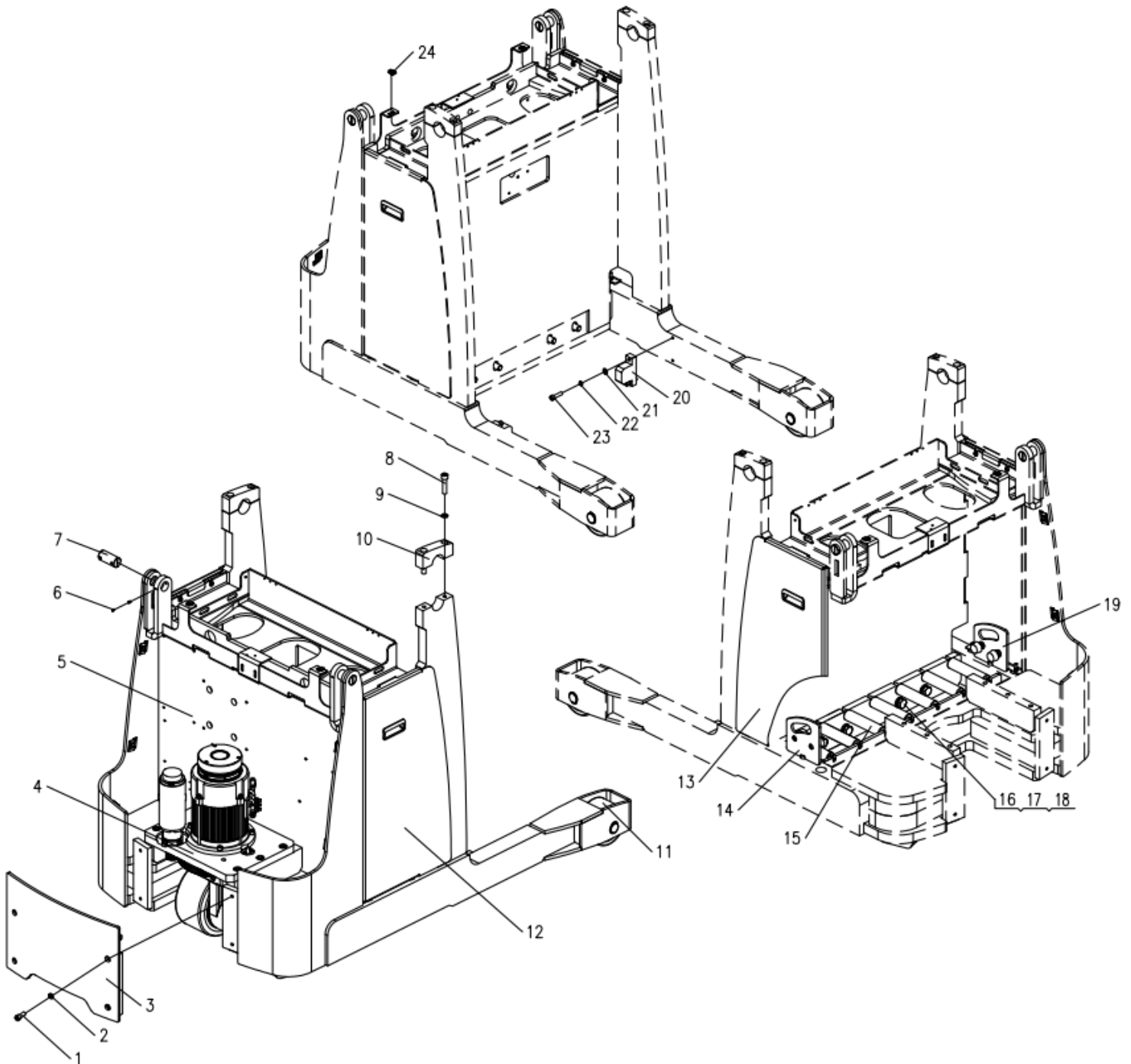
---

## Contents

<b>1.Bodywork system .....</b>	<b>2</b>
1.1Main frame assembly .....	2
1.1.1Bearing wheel assembly.....	4
1.1.2Battery side panel assembly.....	6
1.1.3Battery baffle Assembly .....	8
1.1.4Driving Assembly.....	10
<b>2.Hydraulic system.....</b>	<b>12</b>
2.1Main frame Hydraulic system .....	12
2.1.1Fuel tank assembly .....	14
2.2Door frame hydraulic lifting system.....	16
<b>3. Electrical System .....</b>	<b>18</b>
3.1Main frame Electrical System .....	18
3.2Door frame Electrical System .....	22
<b>4.Door frame system .....</b>	<b>26</b>
4.1Door frame system.....	26
4.1.1Outer mast welding .....	28
4.1.2Middle mast welding .....	30
4.1.3Inner mast welding .....	32
4.1.4Cockpit assembly.....	34
4.1.5Sprocket frame assembly.....	51
4.2Chain assembly .....	53
<b>5.Cover system.....</b>	<b>57</b>
5.1Cover Assembly.....	57
5.2Battery cover assembly.....	59

# 1.Bodywork system

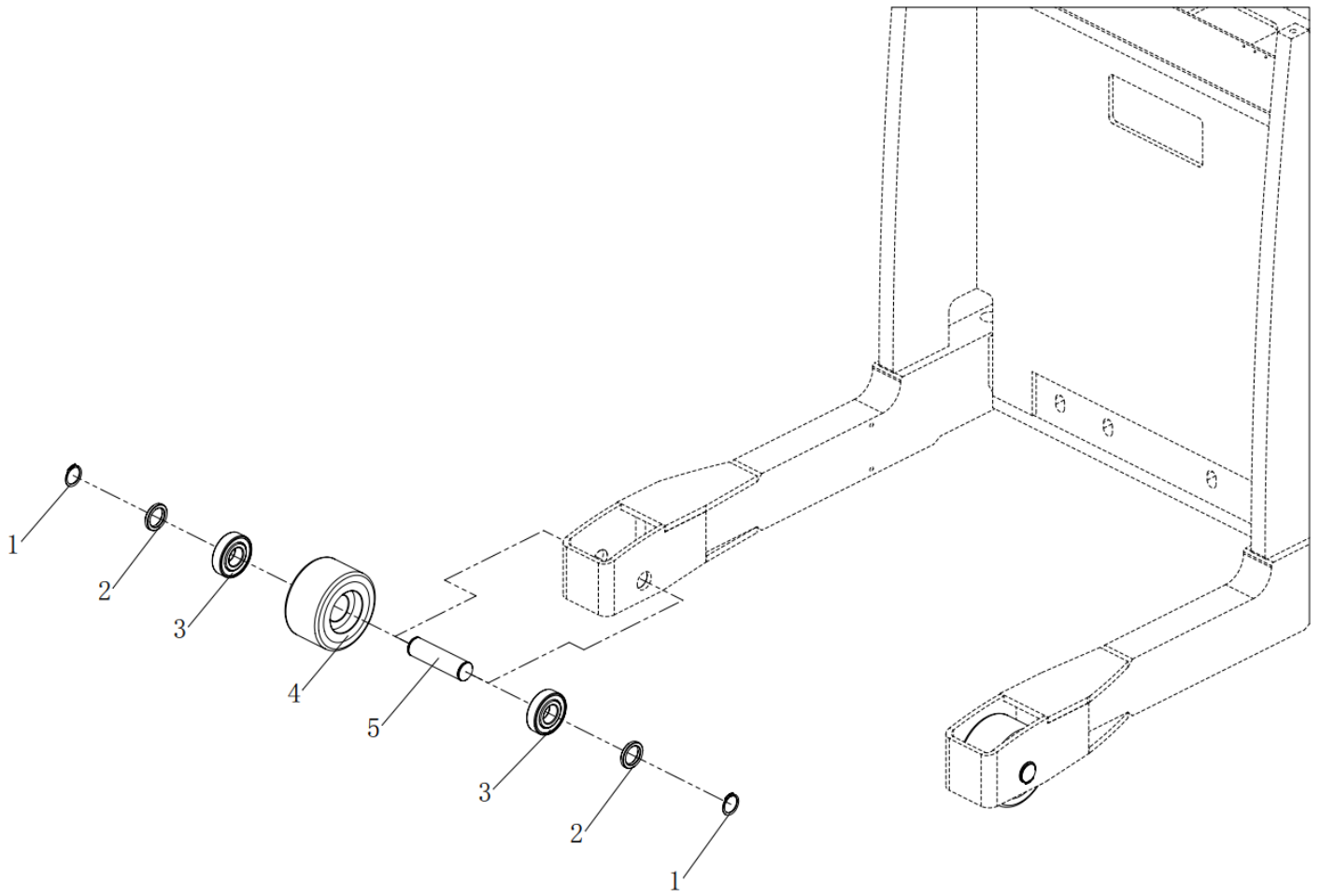
## 1.1 Main frame assembly



## 1.1 Main frame assembly

No.	Code	Description	Specification	QTY	Remark
1	03.0171	Hexagon socket head cap screws	M12×30	4	GB/T 70.1-2000
2	03.0015	Spring Washer	φ12	4	GB/T 93-1987
3	JXG10-01.3	Rear end plate welding		1	
4	JXG10-01.2	Driving assembly		1	
5	JXG10-08.1	Main frame welding		1	
6	03.0270	Hexagon socket set screws with flat end	M6×8	4	GB/T 77-2000
7	JXG10-01.10	Reinforced shaft		2	
8	03.0196	Hexagon socket head cap screws	M14×45	4	GB/T 70.1-2000
9	03.0016	Spring Washer	φ14	4	GB/T 93-1987
10	QGB18X-01.14	Bearing Bush		2	
11	Q15GC-01.3	Bearing wheel assembly		2	
12	JXG10-08.4	Battery side panel right		1	
13	JXG10-08.3	Battery side panel left		1	
14	JXG10-08.7	Battery baffle left		1	
15	02.01.9179	Roller	G1800-3815-12-W169-L200	7	
16	03.0042	Flat Washer	Φ20	4	GB/T 97.1-2002
17	03.0018	Spring Washer	Φ20	4	GB/T 93-1987
18	03.0829	Hexagon bolts full thread	M20×50	4	GB/T 5783-2000
19	JXG10-08.6	Battery baffle right		1	
20	JXG10-08.8	Stop dog		2	
21	03.0043	Flat Washer	φ10	4	GB/T 97.1-2002
22	03.0014	Spring Washer	φ10	4	GB/T 93-1987
23	03.0168	Hexagon socket head cap screws	M10×40	4	GB/T 70.1-2000
24	03.0587	Spring clip nut	M6	2	

### 1.1.1 Bearing wheel assembly

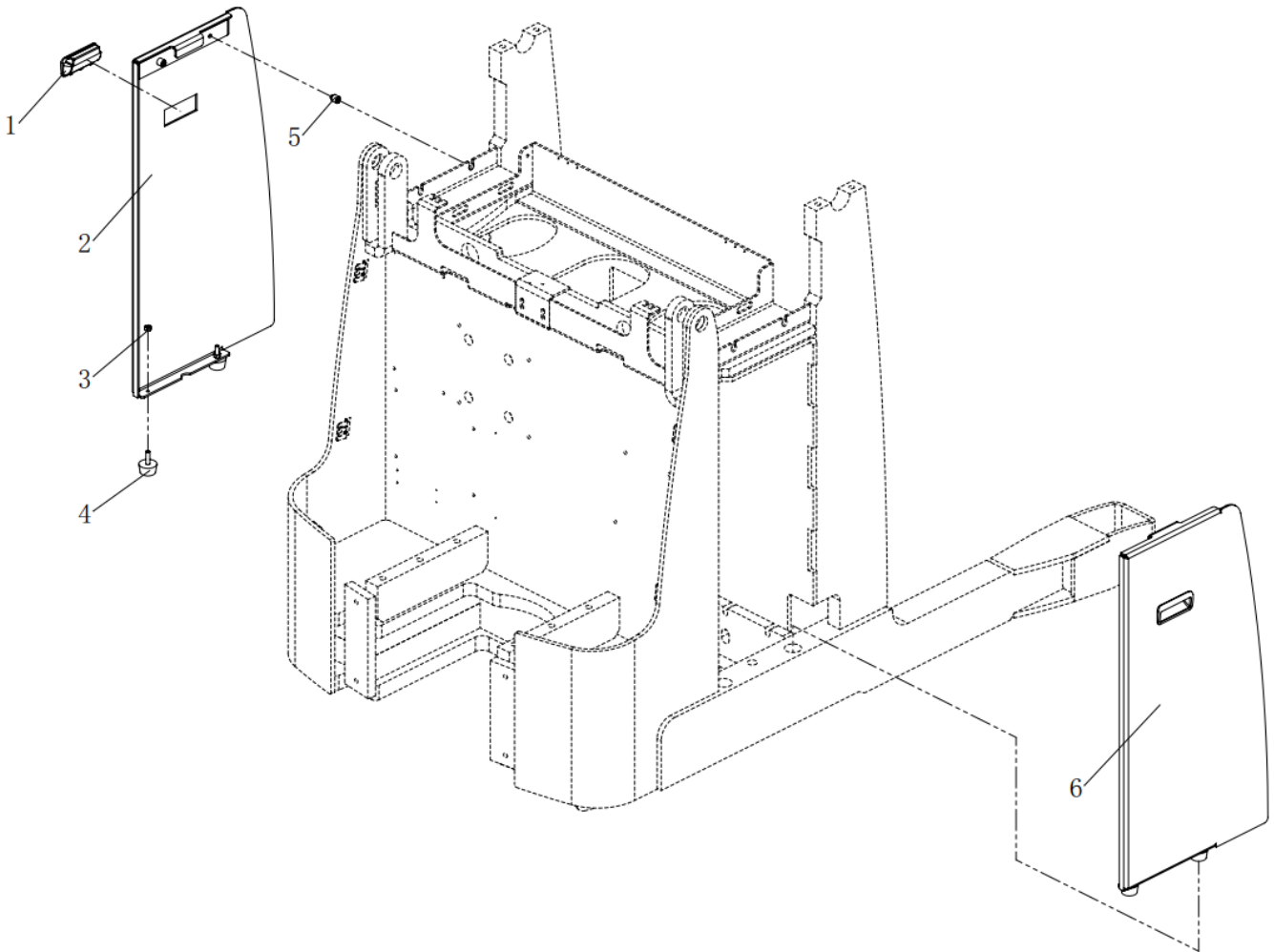


---

### 1.1.1 Bearing wheel assembly

No.	Code	Description	Specification	QTY	Remark
1	03.0583	Circlip for shaft	35	4	GB 894.1-86
2	Q15GC-01.3.2	Spacer		4	
3	03.90.073	Deep groove ball bearing	6307-2Z	4	GB/T 276-94
4	02.LZ.00592	Bearing wheel	$\Phi 150 \times 82$	2	
5	Q15GC-01.3.1	Wheel axis		2	

### 1.1.2 Battery side panel assembly



---

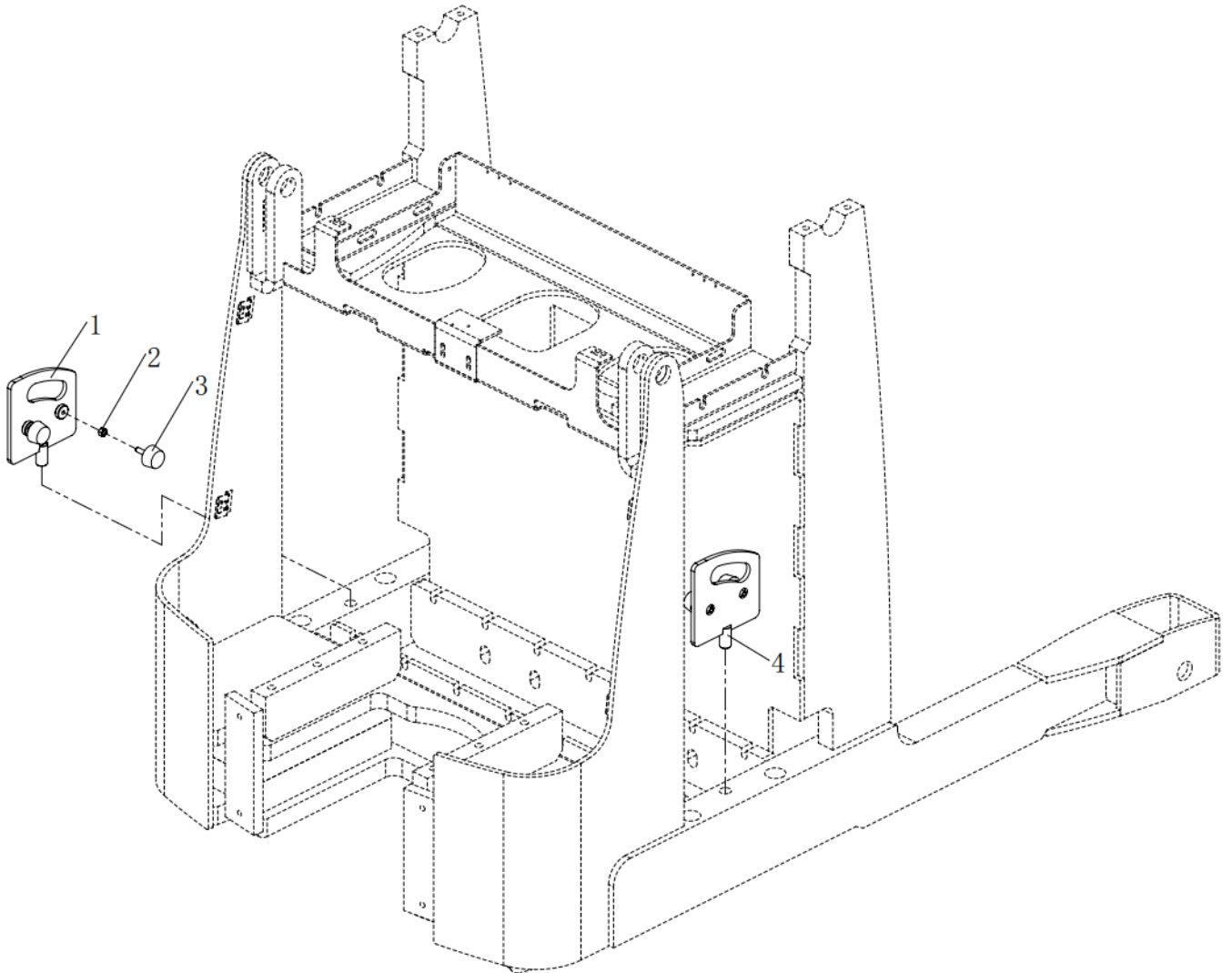
### 1.1.2 Battery side panel assembly

No.	Code	Description	Specification	QTY	Remark
1	03.0208	Embedded handle	5mm	2	
2	JXG10-08.3.1	Battery side panel left welded		1	
3	03.0258	Hexagon nut	M8	4	GB/T 6170-2000
4	02.01.2315	Damping pad	With screw M8×30	4	
5	SL20GE-03.2.4	Card screw		4	
6	JXG10-08.4.1	Battery side panel right welded		1	



---

### 1.1.3 Battery baffle Assembly

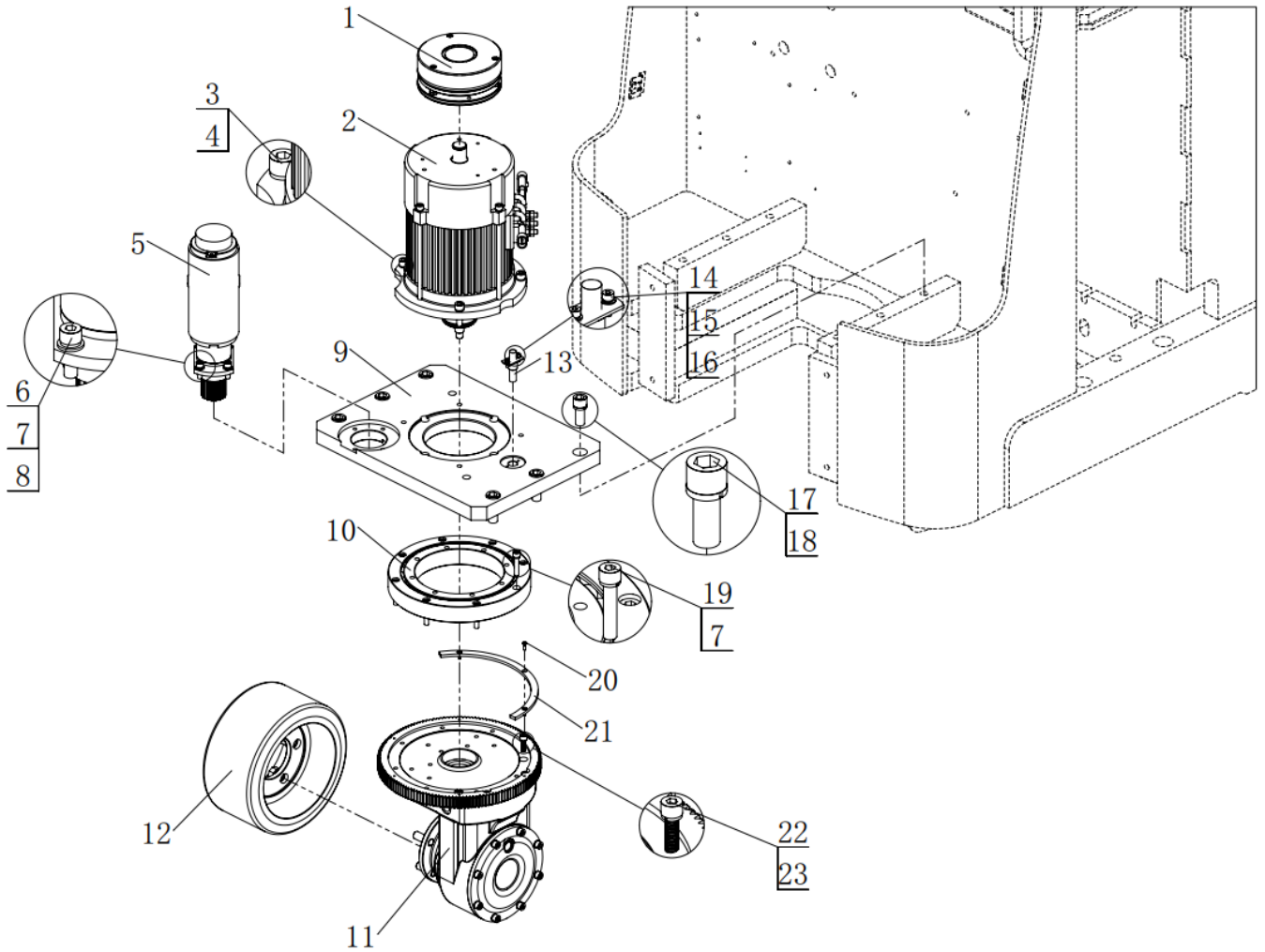


---

### 1.1.3 Battery baffle Assembly

No.	Code	Description	Specification	QTY	Remark
1	JXG10-08.7.1	Battery baffle left welded		1	
2	03.0258	Hexagon nut	M8	4	GB/T 6170-2000
3	02.01.2315	Damping pad	With screw M8×30	4	
4	JXG10-08.6.1	Battery baffle right welded		1	

### 1.1.4 Driving Assembly

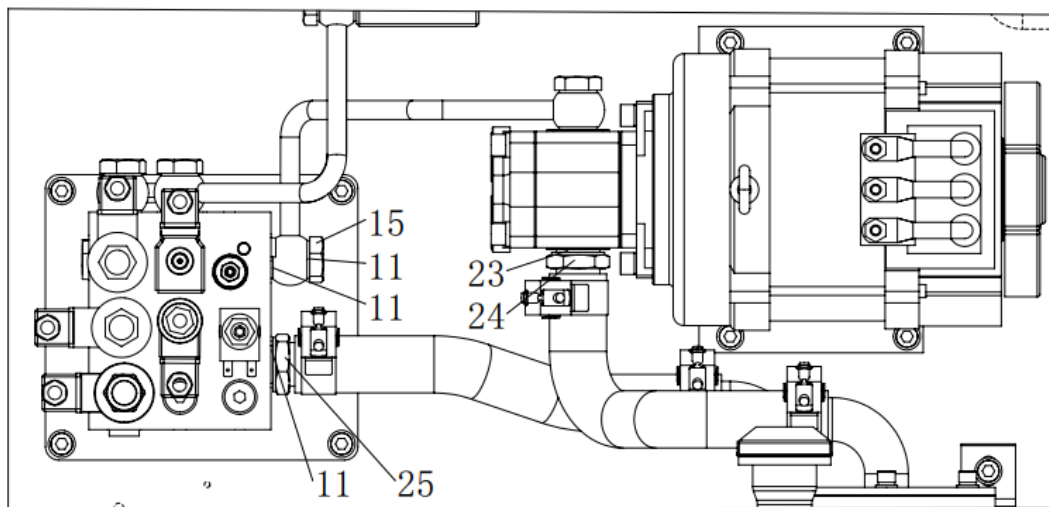
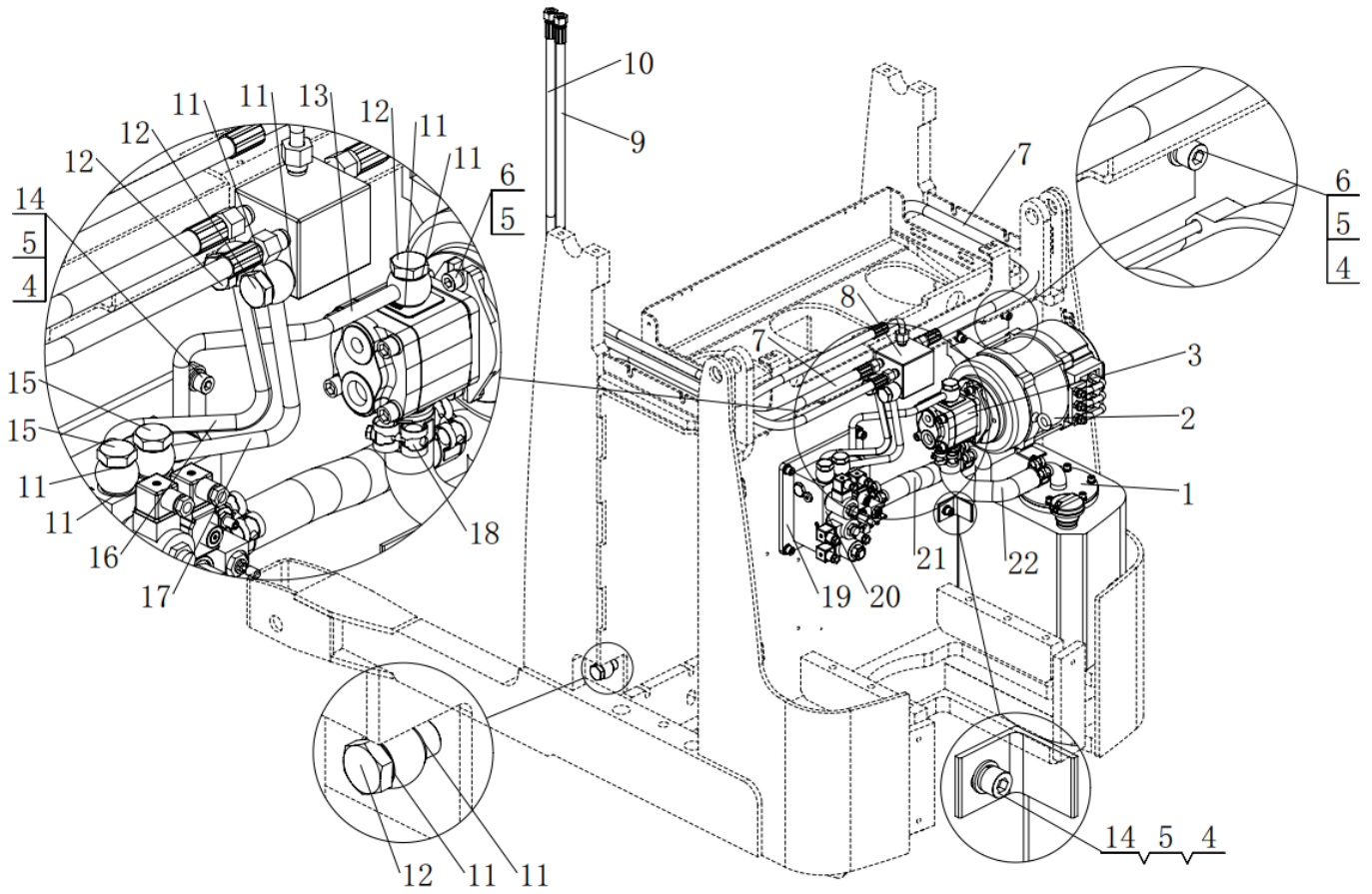


### 1.1.4 Driving Assembly

No.	Code	Description	Specification	QTY	Remark
1	02.01.9234	Electromagnetic brake	CDC-C12(24V25)46G	1	
2	02.DJ.33620	Driving motor(24V3KW)	ZPJ112-40	1	
3	03.0182	Hexagon socket head cap screws	M10×35	4	GB/T 70.1-2000
4	03.0014	Spring Washer	φ10	4	GB/T 93-1987
5	02.DJ.33619	Steering motor	Z90DPM24400-32S / 62PM23.9	1	400W
6	03.0156	Hexagon socket head cap screws	M8×25	4	GB/T 70.1-2000
7	03.0012	Spring Washer	φ8	20	GB/T 93-1987
8	03.0050	Flat Washer	φ8	4	GB/T 97.1-2002
9	JXG10-01.2.1	Drive backplane		1	
10	SL20GA-01.6.4	Big Slewing Bearing		1	
11	02.01.00720	Gearbox assembly	ZD-ZV21-500-001	1	
12	02.QDL.0134	Driving wheel	φ250*127-80	1	
13	19.034653	Inductive proximity switch	CJY12S-04PA	1	
14	03.0123	Hexagon socket head cap screws	M4×10	2	GB/T 70.1-2000
15	03.0008	Spring Washer	φ4	2	GB/T 93-1987
16	03.0054	Flat Washer	φ4	2	GB/T 97.1-2002
17	03.0549	Hexagon socket head cap screws	M16×40	6	GB/T 70.1-2000
18	03.0017	Spring Washer	φ16	6	GB/T 93-1987
19	03.0159	Hexagon socket head cap screws	M8×40	8	GB/T 70.1-2000
20	03.04170	Cross recessed countersunk head screws	M4×10	3	GB/T 820-2000
21	SL20GA-01.6.9	Strip sensor		1	
22	03.0156	Hexagon socket head cap screws	M8×25	4	GB/T 70.1-2000
23	03.0012	Spring Washer	Φ8	4	GB/T 93-1987

## 2. Hydraulic system

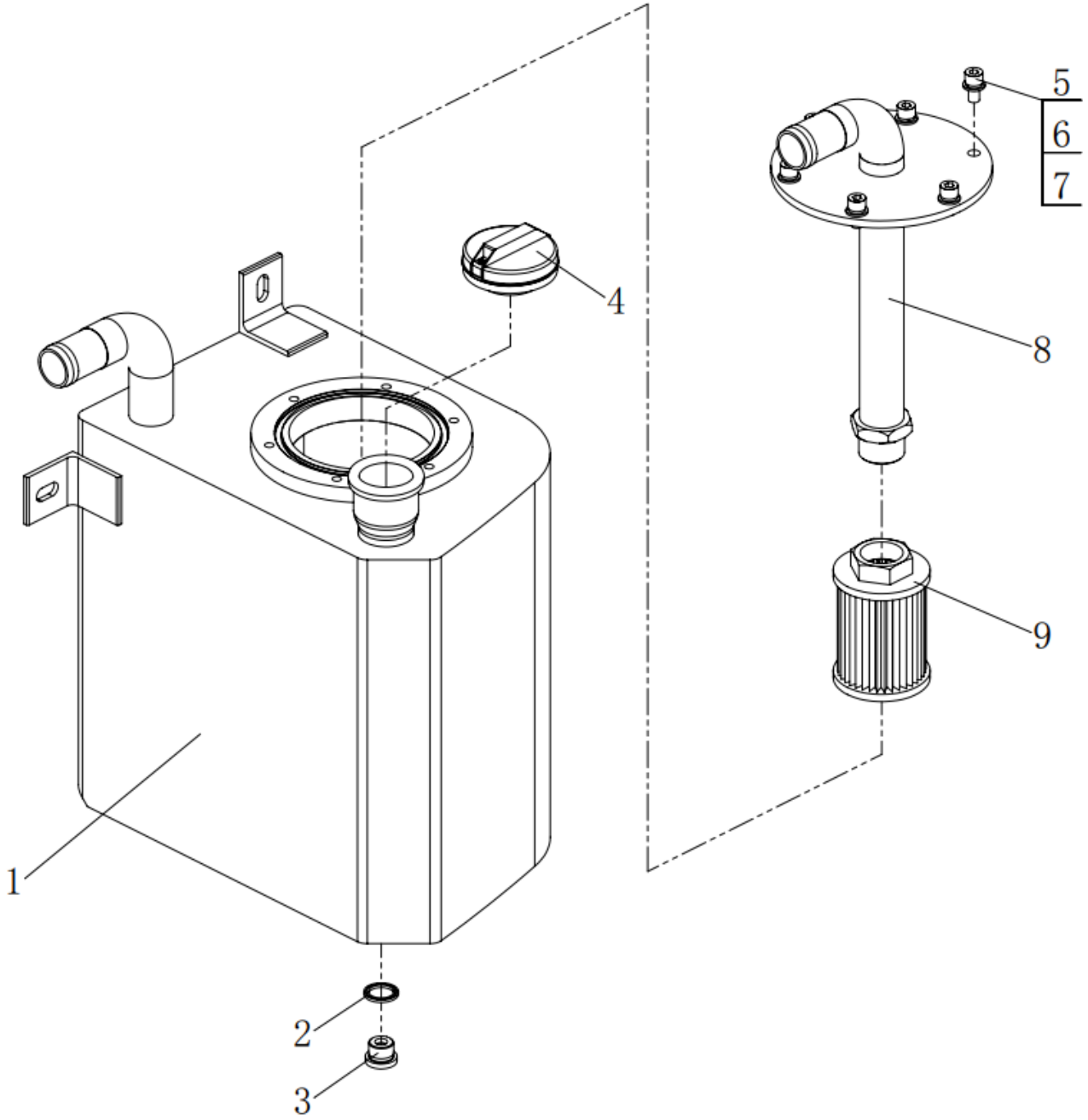
### 2.1 Main frame Hydraulic system



## 2.1 Main frame Hydraulic system

No.	Code	Description	Specification	QTY	Remark
1	JXG10-01.7.2	Fuel tank assembly		1	
2	02.DJ.33624	Pump motor	(16V/5.5KW AC)	1	1U126331
3	02.01.00968	Gear pump	DSG05C7F9H9-R250C(7.00cc)	1	
4	03.0043	Flat Washer	φ10	10	GB/T 97.1-2002
5	03.0014	Spring Washer	φ10	12	GB/T 93-1987
6	03.0166	Hexagon socket head cap screws	M10×30	6	GB/T 70.1-2000
7	JXG10-08.5.1	Hose(1)		1	
8	JXG10-01.7.6	Tubing seat		1	
9	JXG10-08.5.3	Hose(3)		1	
10	JXG10-08.5.2	Hose(2)		1	
11	03.0486	Φ22 Combination gasket		17	GB892-77
12	Q15GB-04.7.16	Hollow bolt		5	
13	JXG10-01.7.4	Steel Pipe		1	
14	03.0163	Hexagon socket head cap screws	M10×20	6	GB/T 70.1-2000
15	CL20GA-12.13 (FB55)	Hinge bolt (British system)		3	
16	JXG10-01.7.14	Steel Pipe		1	
17	JXG10-01.7.5	Steel Pipe		1	
18	03.05384	Hoop	Φ40-43	4	
19	JXG10-01.7.3	Valve group mounting plate		1	
20	02.DLDY.3457	Valve group	800602349	1	
21	JXG10-01.7.11	Oil return pipe		1	
22	JXG10-01.7.12	Oil suction pipe		1	
23		Φ24 Combination gasket		1	GB892-77
24	Q15GB-01.6.3	Pump connector		1	
25	QGB18X-01.5.4	Oil return joint(2)		1	

### 2.1.1 Fuel tank assembly

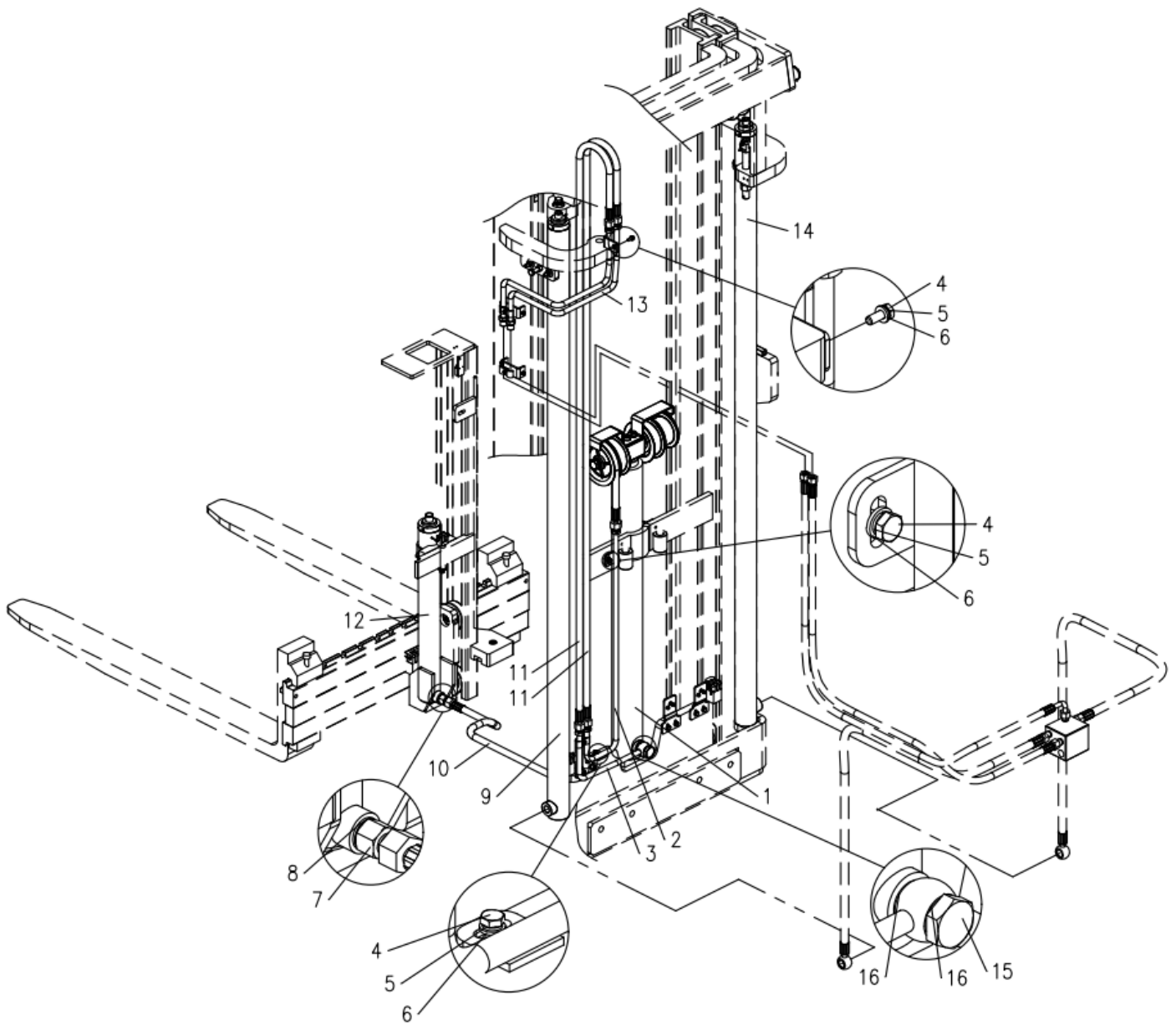


## 2.1.1 Fuel tank assembly

No.	Code	Description	Specification	QTY	Remark
1	JXG10-01.7.2.1	Fuel tank welded		1	
2	03.0484	Φ18 Combination gasket		1	GB982-77
3	03.0989	Hexagon socket screw plug	M18×1.5×16	1	JBZQ4444-1997
4	02.01.01396	E25A Fuel tank Cover		1	
5	03.0153	Hexagon socket head cap screws	M8×16	6	GB/T 70.1-2000
6	03.0012	Spring Washer	φ8	6	GB/T 93-1987
7	03.0050	Flat Washer	φ8	6	GB/T 97.1-2002
8	QGB18X-01.5.1.2.1	Fuel tank cover plate welded		1	
9	02.01.32978	Oil filter	M33×2	1	H24C7-50302 Y0809A-OEM



## 2.2 Door frame hydraulic lifting system

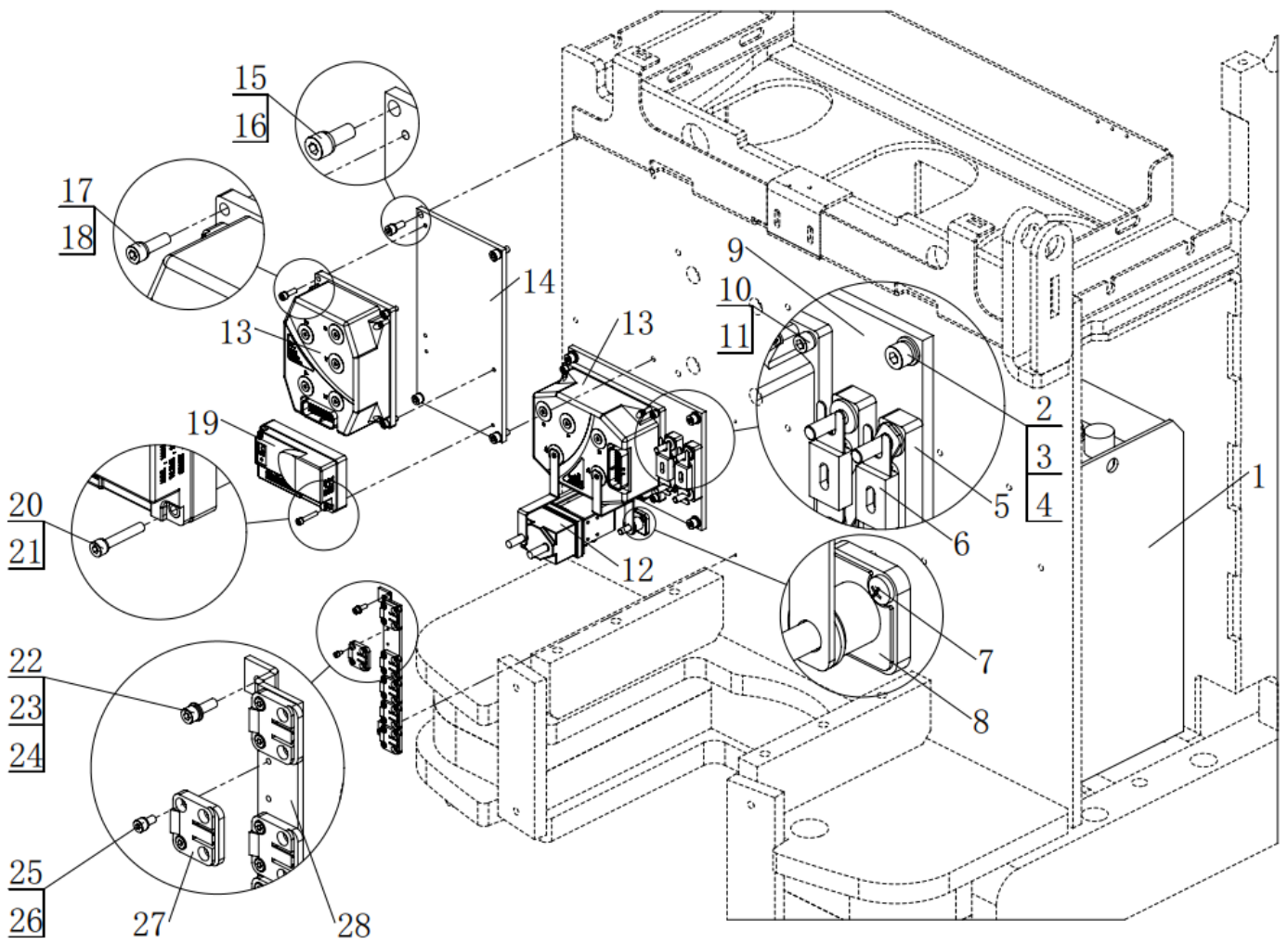


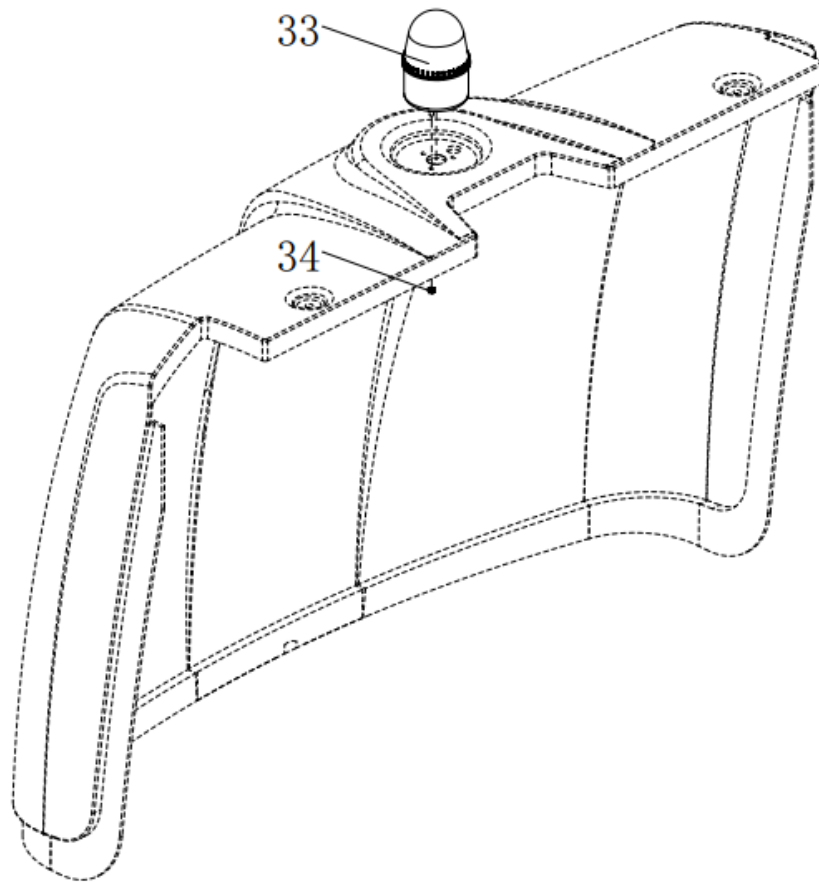
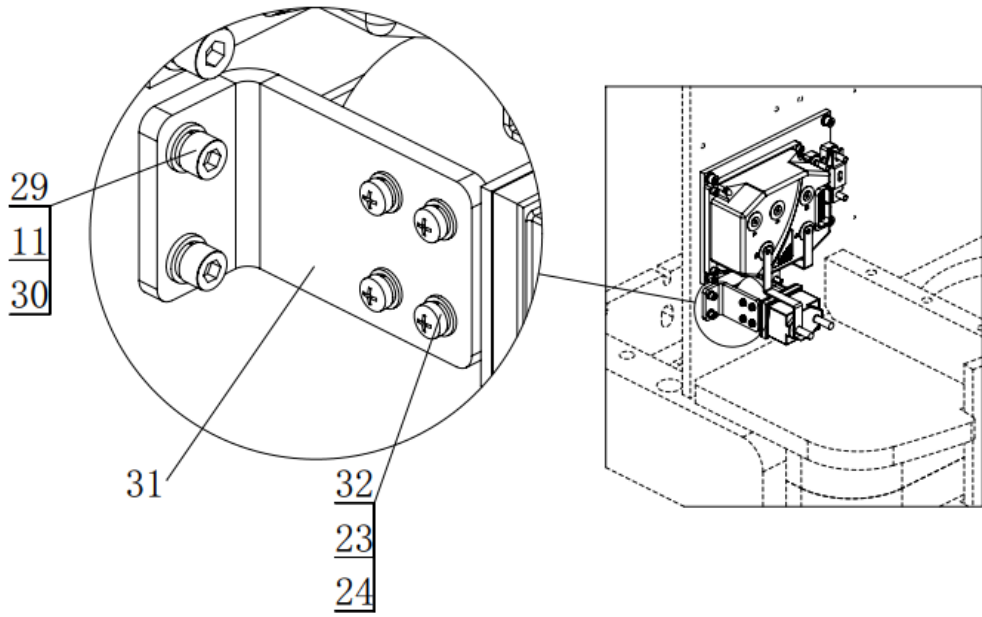
## 2.2 Door frame hydraulic lifting system

No.	Code	Description	Specification	QTY	Remark
1	JXG10-06.5	Inner lifting cylinder assembly		1	
2	JXG10-06.6.1	Steel Pipe welded(1)		1	
3	JXG10-02.8.3	Steel Pipe		1	
4	03.0411	Hexagon bolts full thread	M6×16	3	GB/T 5783-2000
5	03.0011	Spring Washer	φ6	3	GB/T 93-1987
6	03.0049	Flat Washer	φ6	3	GB/T 97.1-2002
7	Q15GB-02.5.14	Straight connector		1	
8	03.0484	Φ18 Combination gasket		1	GB982-77
9	JXG10-06.4	Outer lifting cylinder assembly Left		1	
10	JXG10-06.6.4	Additional lifting Hose		1	
11	JXG10-06.6.3	Lifting Hose		2	
12	JXG10-02.4.2.3	Small lifting cylinder assembly		1	
13	JXG10-06.6.2	Steel Pipe Welded (2)		1	
14	JXG10-06.4	Outer lifting cylinder assembly Right		1	
15	Q15GB-04.7.16	Hollow bolt		1	
16	03.0486	Φ22 Combination gasket		1	GB892-77

### 3. Electrical System

#### 3.1 Main frame Electrical System



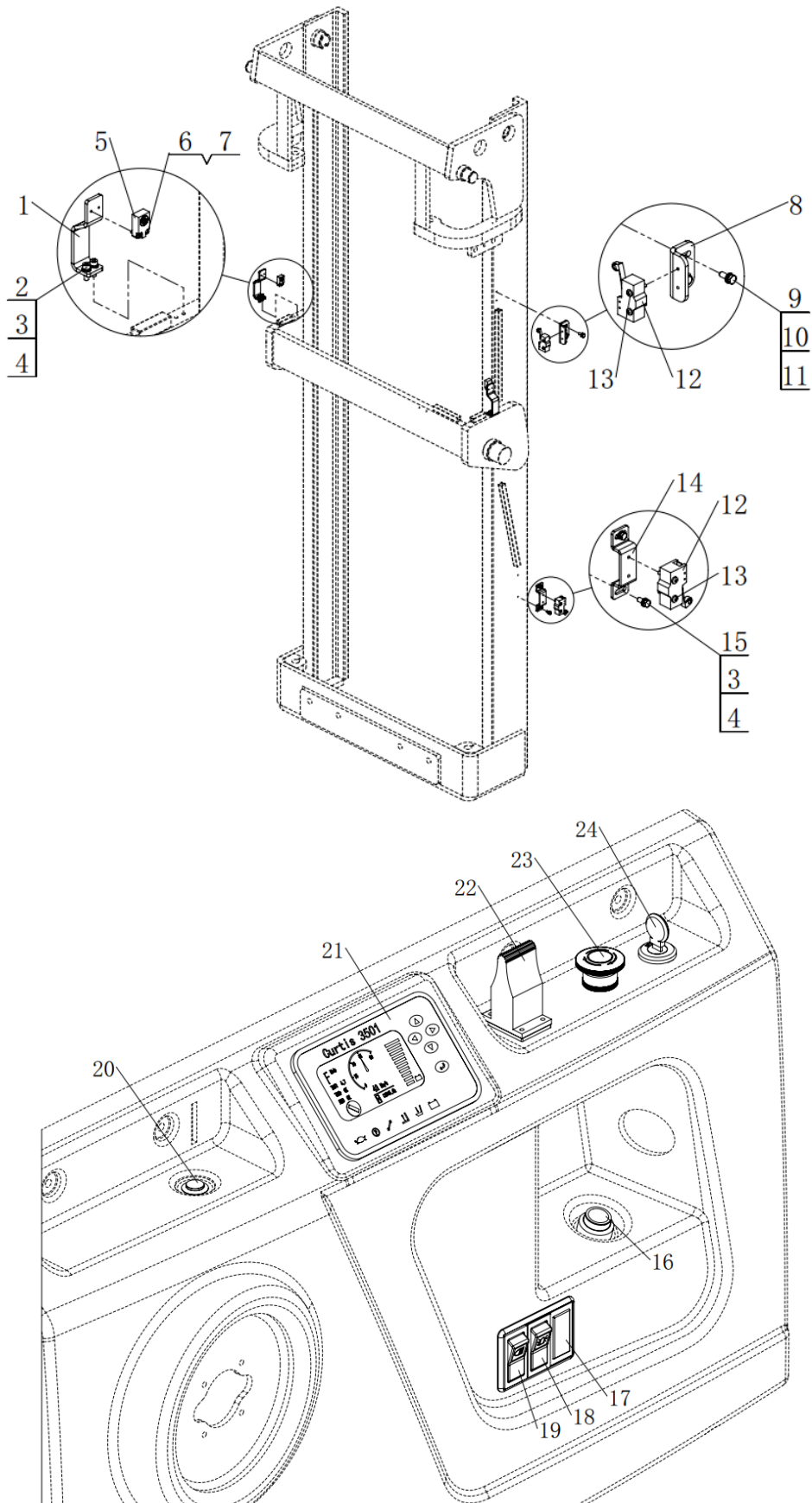


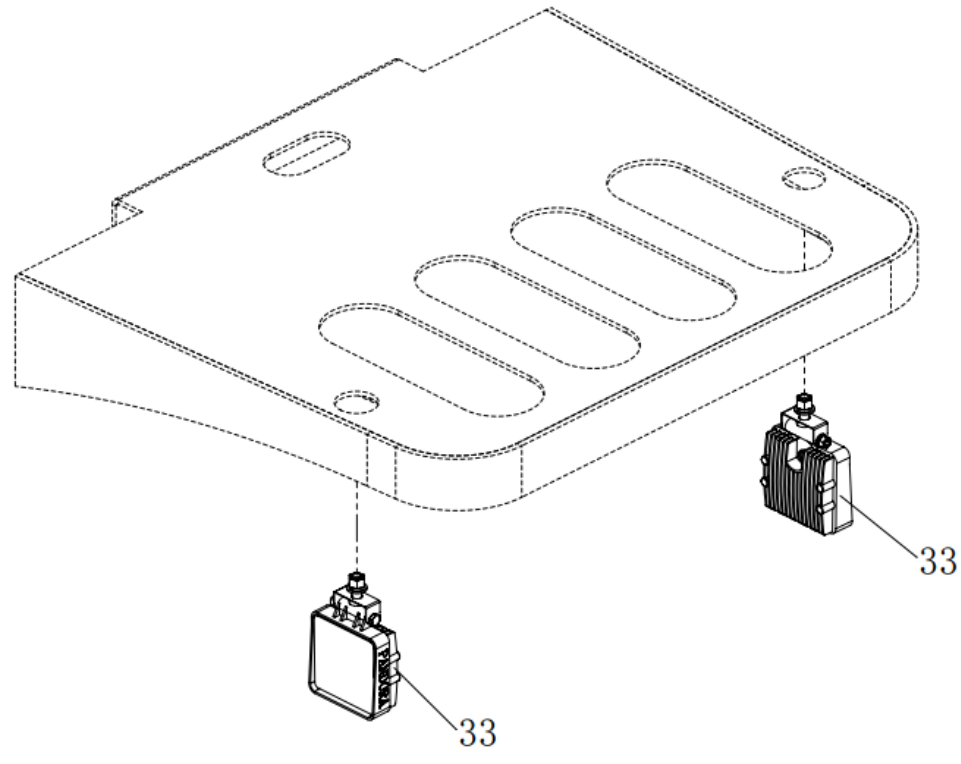
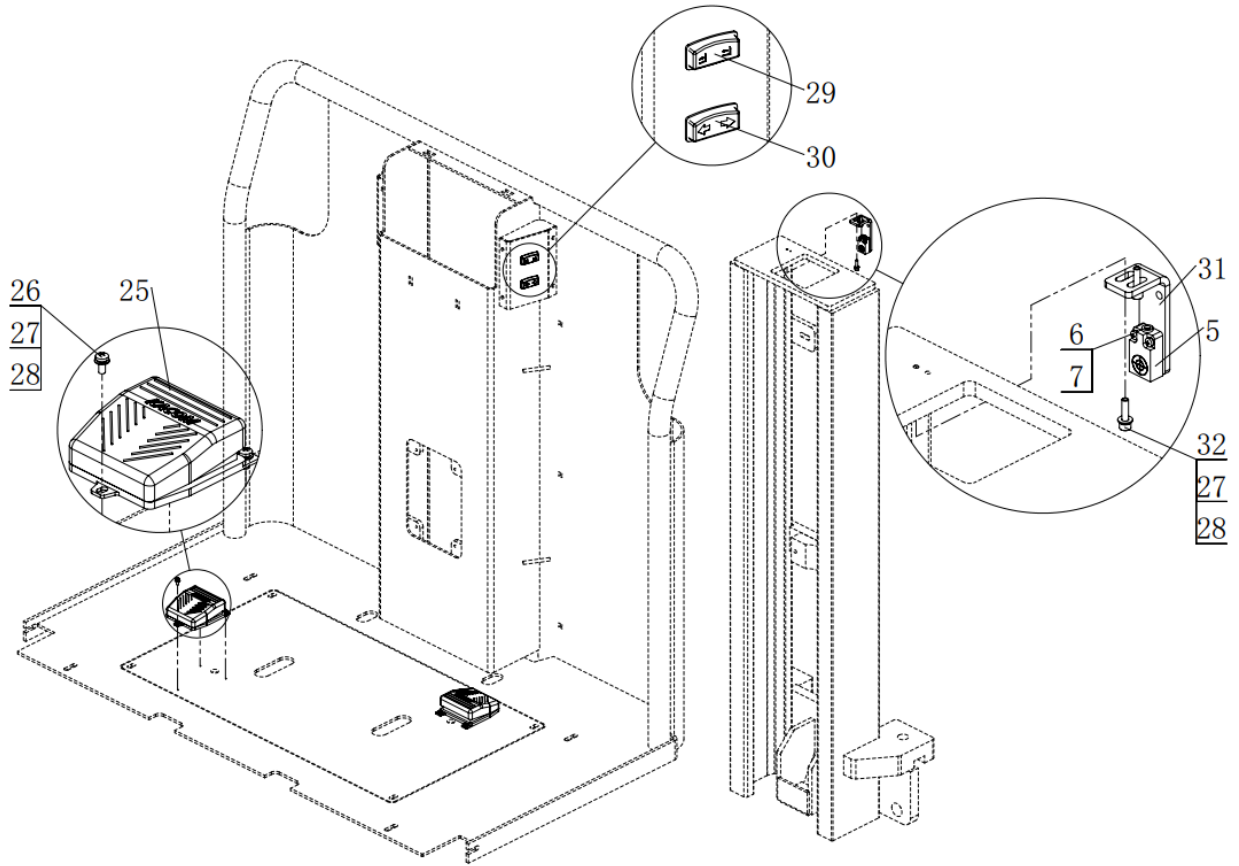
### 3.1 Main frame Electrical System

No.	Code	Description	Specification	QTY	Remark
1	JXG10-08.2	Battery	4PZS280/24V280AH	1	
2	03.0154	Hexagon socket head cap screws	M8×20	4	GB/T 70.1-2000
3	03.0012	Spring Washer	Φ8	4	GB/T 93-1987
4	03.0050	Flat Washer	Φ8	4	GB/T 95-2002
5	02.01.3057	Fuse base SYY		2	
6	02.01.2000	Fuse	300A	2	
7	03.0552	Cross recessed pan head screw	M4×14	2	GB/T 818-2000
8	16.0543	Negative terminal	M8	1	
9	Q15GB-06.4.1	Aluminum plate	250*180	1	
10	03.0149	Hexagon socket head cap screws	M6×20	4	GB/T 70.1-2000
11	03.0011	Spring Washer	Φ6	4	GB/T 93-1987
12	02.01.21622	Main contactor	SW200-262	1	
13	02.KZQ.2307	AC controller	1232SE-2421	2	
14	Q15GB-06.5.1	Aluminum plate		1	
15	03.0154	Hexagon socket head cap screws	M8×20	4	GB/T 70.1-2000
16	03.0012	Spring Washer	Φ8	4	GB/T 93-1987
17	03.0149	Hexagon socket head cap screws	M6×20	4	GB/T 70.1-2000
18	03.0011	Spring Washer	Φ6	4	GB/T 93-1987
19	02.KZQ.2369	Steering controller	1220C	1	24V60A
20	03.01330	Hexagon socket head cap screws	M5×30	2	GB/T 70.1-2000
21	03.0007	Spring Washer	Φ5	2	GB/T 93-1987
22	03.0133	Hexagon socket head cap screws	M5×16	2	GB/T 70.1-2000
23	03.0007	Spring Washer	φ5	6	GB/T 93-1987
24	03.0055	Flat Washer	φ5	6	GB/T 97.1-2002
25	03.0144	Hexagon socket head cap screws	M4×8	12	GB/T 70.1-2000

26	03.0008	Spring Washer	$\varphi 4$	12	GB/T 93-1987
27	SL30GB-01.4.7	Wire base		6	
28	SL20GA-01.15	Wire connector seat		1	
29	03.0150	Hexagon socket head cap screws	M6×25	2	GB/T 70.1-2000
30	03.0049	Flat Washer	$\varphi 6$	2	GB/T 97.1-2002
31	Q15GB-01.19	Relay bracket		1	
32	03.0226	Cross recessed pan head screw	M5×12	4	GB/T 818-2000
33	16.0469	Small silent warning light	LTE-5071J (24V)	1	
34	03.0254	Hexagon nut	M4	3	GB/T 6170-2000

### 3.2 Door frame Electrical System







### 3.2 Door frame Electrical System

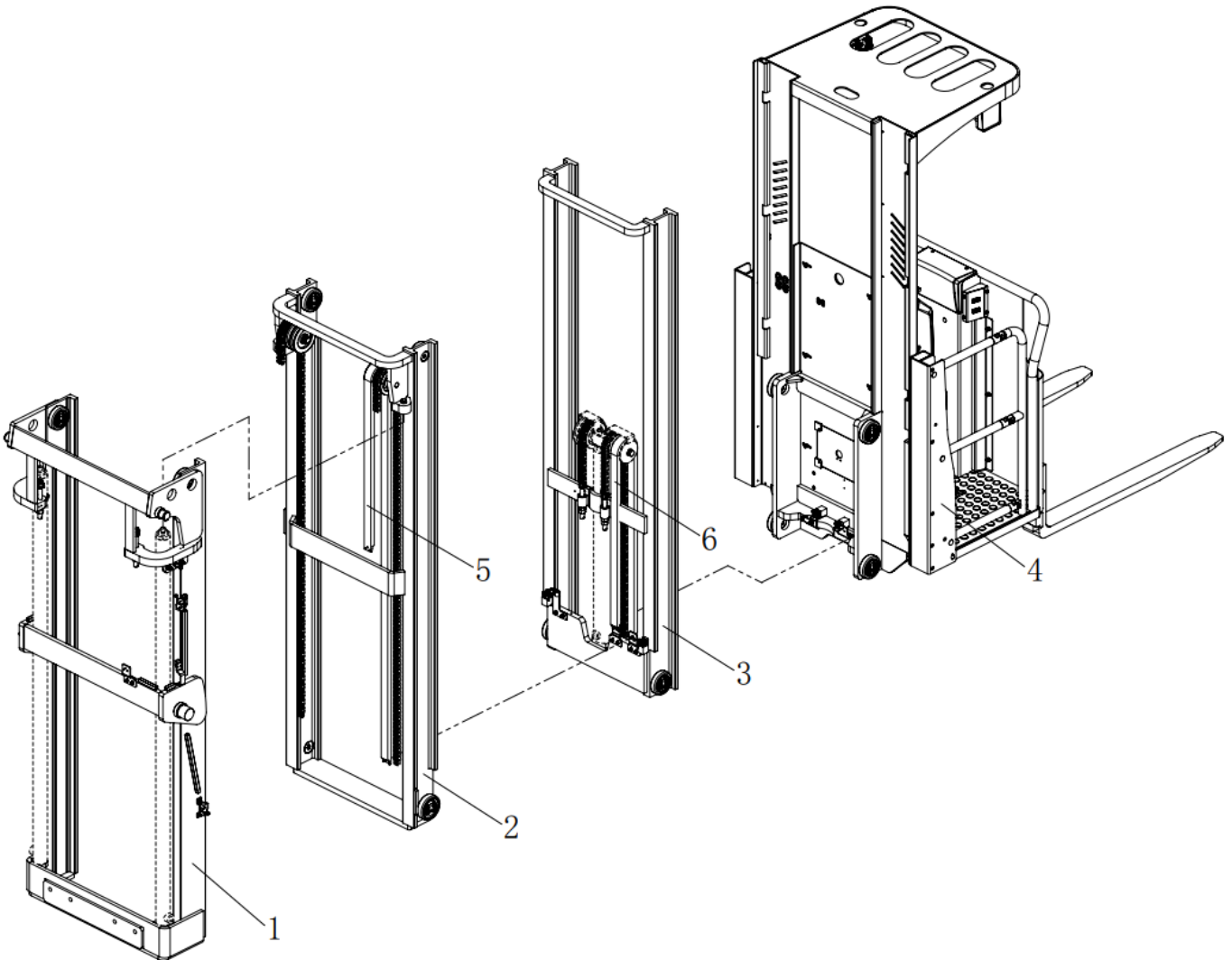
No.	Code	Description	Specification	QTY	Remark
1	JXG10-02.1.4	Switch board		2	
2	03.0133	Hexagon socket head cap screws	M5×16	4	GB/T 70.1-2000
3	03.0007	Spring Washer	φ5	6	GB/T 93-1987
4	03.0055	Flat Washer	φ5	6	GB/T 97.1-2002
5	19.0524	Proximity Switch	CLJF10-05NA	2	
6	03.05364	Cross recessed pan head screw	M3×12	4	GB/T 818-2000
7	03.00091	Spring Washer	φ3	4	GB/T 93-1987
8	Q1545-11.1.4	Micro Switch board		1	
9	03.0411	Hexagon bolts full thread	M6×16	2	GB/T 5783-2000
10	03.0011	Spring Washer	φ6	2	GB/T 93-1987
11	03.0049	Flat Washer	φ6	2	GB/T 97.1-2002
12	02.01.2182	Micro Switch (Long)		2	RZ-15GW2S-B3
13	03.0223	Cross recessed pan head screw	M4×25	4	GB/T 818-2000
14	JXG10-02.4.1.8	Switch mounting plate		1	
15	03.04090	Hexagon bolts full thread	M5×12	2	GB/T 5783-2000
16	16.0164	Button switch	R9C10VN	1	AC15-DC15
17	16.0440	Triple switch box		1	
18	16.0541	One gear two plug warning light switch		1	
19	16.0319	One gear two plug headlight switch		1	
20	16.0246	Metal button switch		1	GQ19SH-10
21	02.DLB.21544	Curtis instrument	3501TB-5004	1	3501TB-5004
22	02.01.9319	Joystick		1	YS200-T-HV2
23	19.03311	Emergency stop switch		1	Y090-017S(LASY)
24	02.01.2186	Electric lock		1	
25	02.01.2236	Foot switch	HRF-M2Y	2	

26	03.0230	Cross recessed pan head screw	M4×10	6	GB/T 818-2000
27	03.0008	Spring Washer	φ4	6	GB/T 93-1987
28	03.00491	Flat Washer	φ4	6	GB/T 97.1-2002
29	02.01.317721	Large handle lifting switch set		2	
30	16.0496	Large handle move forward /backward switch set		2	
31	JXG10-02.4.2.5	Mounting plate		1	
32	03.0127	Hexagon socket head cap screws	M4×16	2	GB/T 70.1-2000
33	19.0334	Headlight	PDL-AS27-01	2	

---

## 4. Door frame system

### 4.1 Door frame system

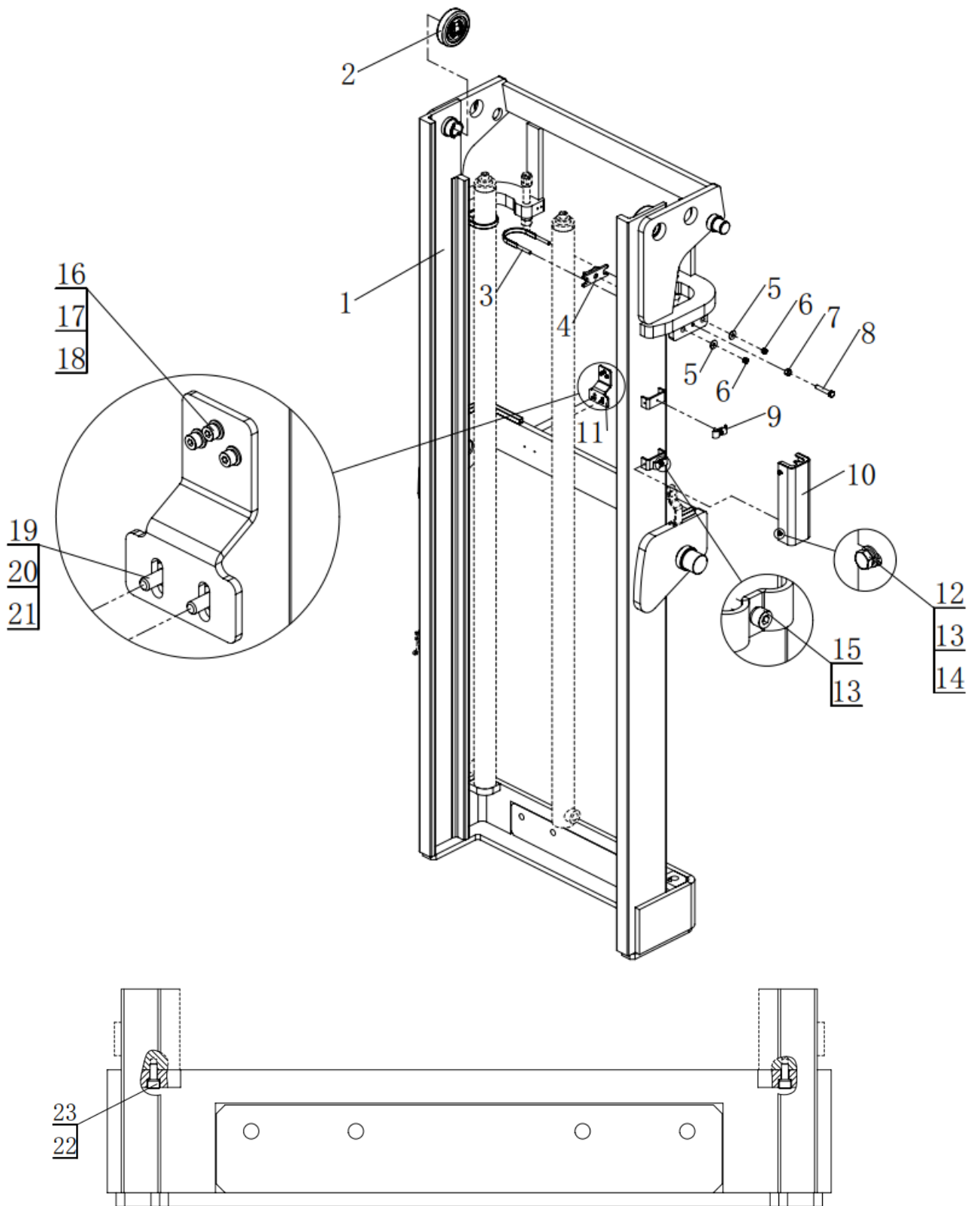


---

#### 4.1Door frame system

No.	Code	Description	Specification	QTY	Remark
1	JXG10-06.1	Outer mast welding (4.5M)		1	
2	JXG10-06.2	Middle mast welding (4.5M)		1	
3	JXG10-06.3	Inner mast welding (4.5M)		1	
4	JXG10-02.4	Cockpit assembly		1	
5	19.15880	Drag chain ( 180 piece )		1	180 Piece
6	19.15880	Drag chain2 ( 130 Piece )		1	130Piece

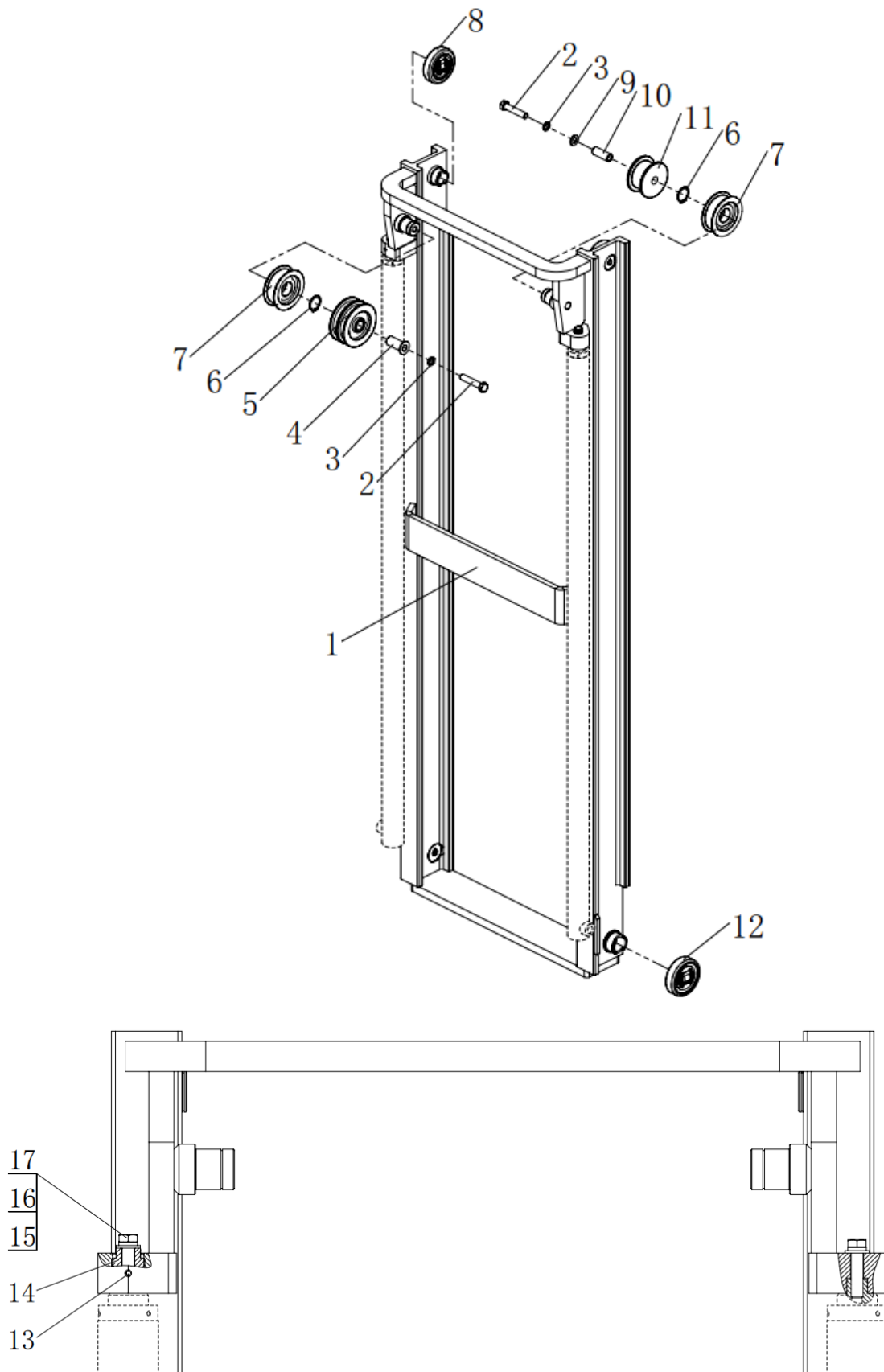
### 4.1.1 Outer mast welding



#### 4.1.1 Outer mast welding

No.	Code	Description	Specification	QTY	Remark
1	JXG10-06.1.1	Outer mast welded(4.5M)		1	
2	02.01.30743	Combination roller	CBA102.6-1TSG1	2	
3	02.01.3514	30HB lifting cylinder U sharp bolt		2	
4	19.0595	Cylinder support block (70-78)	70-78	2	
5	03.0005	Big Washer	Φ8	4	GB/T 96.1-2002
6	03.0244	Hexagon lock nut	M8	4	GB/T 889.1-2000
7	03.0258	Hexagon nut	M10	2	GB/T 41-2000
8	03.0635	Hexagon bolts full thread	M10×55	2	GB/T 5783-2000
9	Q15GC-02.3.3.3	Pipe clamp		2	
10	JXG10-02.1.2	Cover welding		1	
11	JXG10-02.1.3	Drag chain bracket (1)		1	
12	03.04090	Hexagon bolts full thread	M5×12	4	GB/T 5783-2000
13	03.0007	Spring Washer	φ5	6	GB/T 93-1987
14	03.0055	Flat Washer	φ5	4	GB/T 97.1-2002
15	03.0141	Hexagon socket head cap screws	M5×20	2	GB/T 70.1-2000
16	03.0123	Hexagon socket head cap screws	M4×10	3	GB/T 70.1-2000
17	03.0008	Spring Washer	φ4	3	GB/T 93-1987
18	03.0054	Flat Washer	φ4	3	GB/T 97.1-2002
19	03.0411	Hexagon bolts full thread	M6×16	2	GB/T 5783-2000
20	03.0049	Flat Washer	φ6	2	GB/T 97.1-2002
21	03.0011	Spring Washer	φ6	2	GB/T 93-1987
22	03.0154	Hexagon socket head cap screws	M8×20	2	GB/T 70.1-2000
23	03.0012	Spring Washer	φ8	2	GB/T 93-1987

### 4.1.2 Middle mast welding

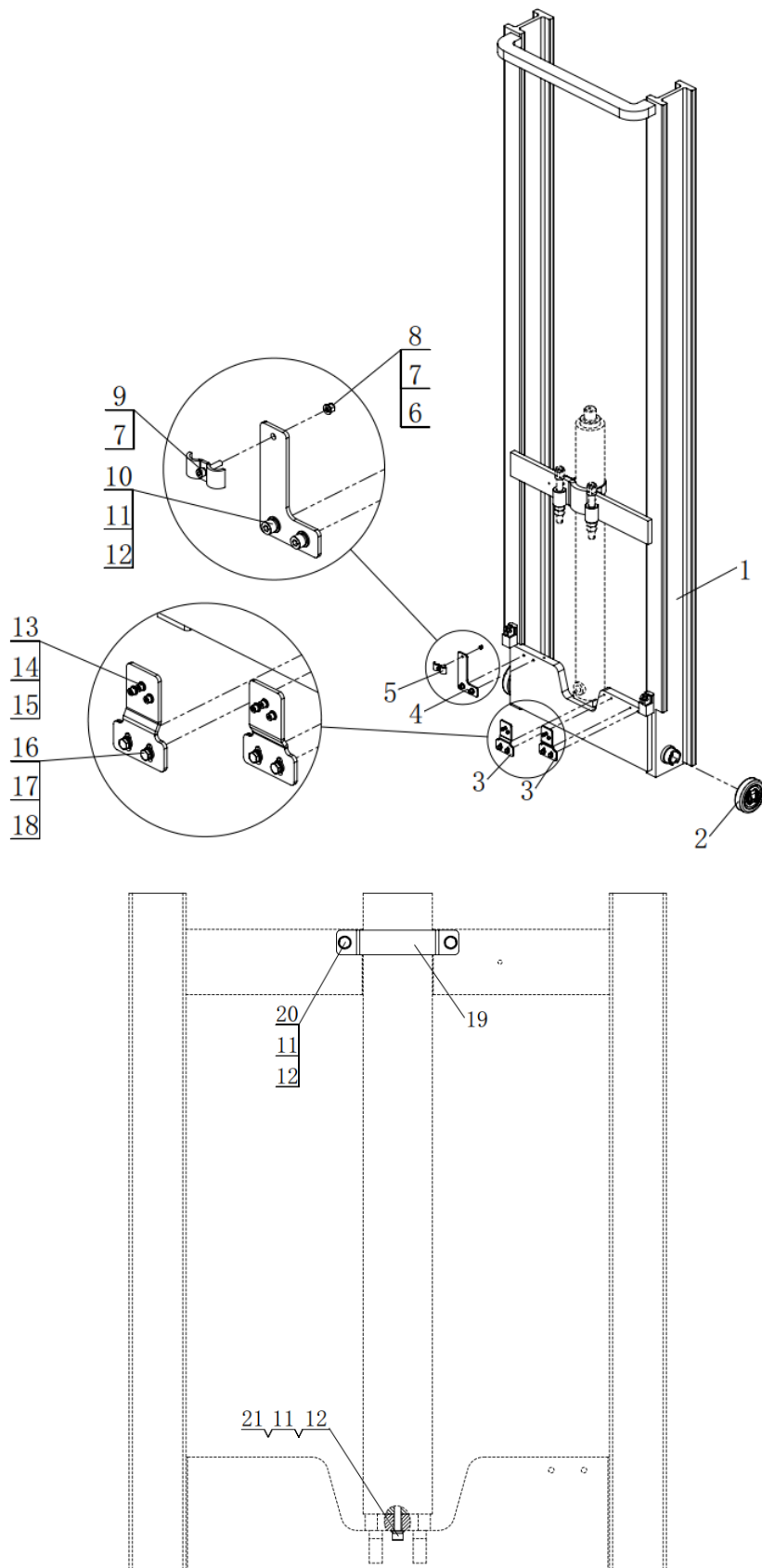


### 4.1.2 Middle mast welding

No.	Code	Description	Specification	QTY	Remark
1	JXG10-06.2.1	Middle mast welded(4.5M)		1	
2	03.0390	Hexagon bolts full thread	M16×80	2	GB/T 5782-2000
3	03.0017	Spring Washer	φ16	2	GB/T 93-1987
4	Q15GB-02.2.3	Shaft sleeve		1	
5	Q15GB-02.2.2	Tubing sprocket		1	
6	03.0070	Circlip for shaft	40	2	GB 894.1-86
7	30.01.2980	Door frame sprocket	CG40A1-20	2	
8	02.01.30743	Combination roller	CBA102.6-1TSG1	2	
9	03.0047	Flat Washer	φ16	1	GB/T 97.1-2002
10	JXG10-02.2.4	Spacer (2)		1	
11	JXG10-02.2.3	pulley		1	
12	02.01.91720	Combination roller(Q20GA)	CBA109.5-JL	2	
13	03.0274	Hexagon socket set screws with flat end	M8×5	2	GB/T 77-2000
14	Q15GC-02.2.2	Oil cylinder adjustment bolt		1	
15	03.0044	Flat Washer	φ12	2	GB/T 97.1-2002
16	03.0016	Spring Washer	φ12	2	GB/T 93-1987
17	03.0387	Hexagon bolt	M12×50	2	GB/T 5783-2000



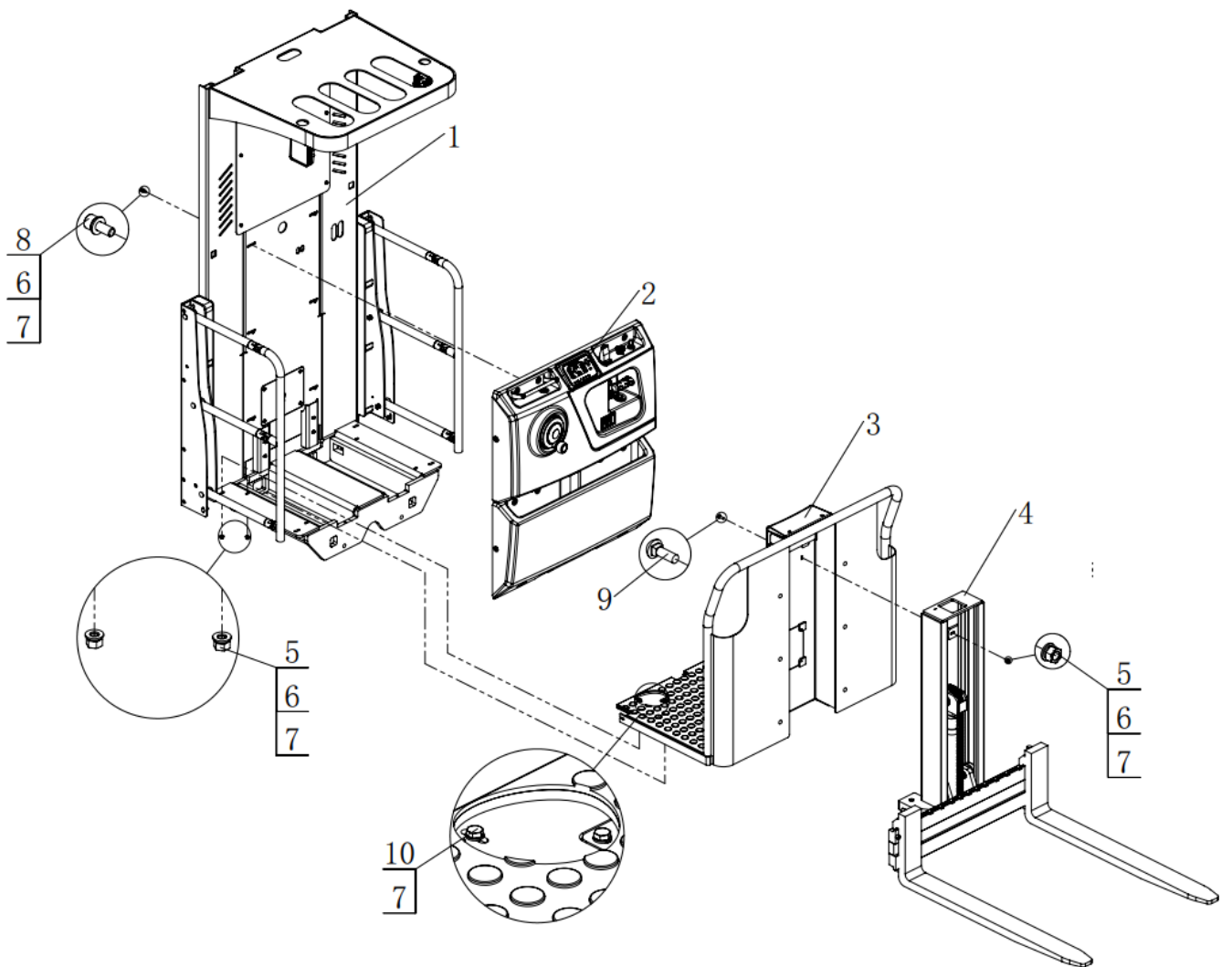
### 4.1.3 Inner mast welding



### 4.1.3 Inner mast welding

No.	Code	Description	Specification	QTY	Remark
1	JXG10-06.3.1	Inner Mast welded (4.5M)		1	
2	02.01.30743	Combination roller	CBA102.6-1TSG1	2	
3	JXG10-02.3.3	Drag chain bracket(2)		2	
4	Q20GA-07.3.3	Fixed bracket		1	
5	Q15GC-02.3.3.3	Pipe clamp		1	
6	03.0055	Flat Washer	φ5	1	GB/T 97.1-2002
7	03.0007	Spring Washer	φ5	2	GB/T 93-1987
8	03.0255	Hexagon nut	M5	1	GB/T 6170-2000
9	03.01330	Hexagon socket head cap screws	M5×30	1	GB/T 70.1-2000
10	03.0153	Hexagon socket head cap screws	M8×16	2	GB/T 70.1-2000
11	03.0012	Spring Washer	φ8	5	GB/T 93-1987
12	03.0050	Flat Washer	φ8	5	GB/T 97.1-2002
13	03.0123	Hexagon socket head cap screws	M4×10	6	GB/T 70.1-2000
14	03.0008	Spring Washer	φ4	6	GB/T 93-1987
15	03.00491	Flat Washer	φ4	6	GB/T 97.1-2002
16	03.0411	Hexagon bolts full thread	M6×16	4	GB/T 5783-2000
17	03.0011	Spring Washer	φ6	4	GB/T 93-1987
18	03.0049	Flat Washer	φ6	4	GB/T 97.1-2002
19	JXG10-02.3.2	Oil cylinder Hoop		1	
20	03.0373	Hexagon bolts full thread	M8×16	2	GB/T 5783-2000
21	03.0158	Hexagon socket head cap screws	M8×35	1	GB/T 70.1-2000

#### 4.1.4 Cockpit assembly

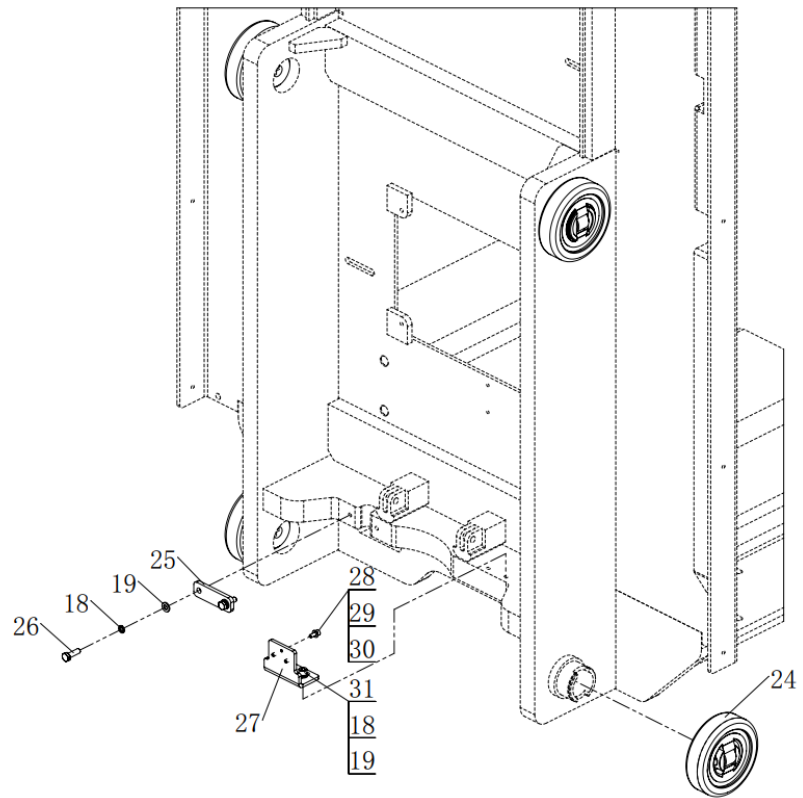
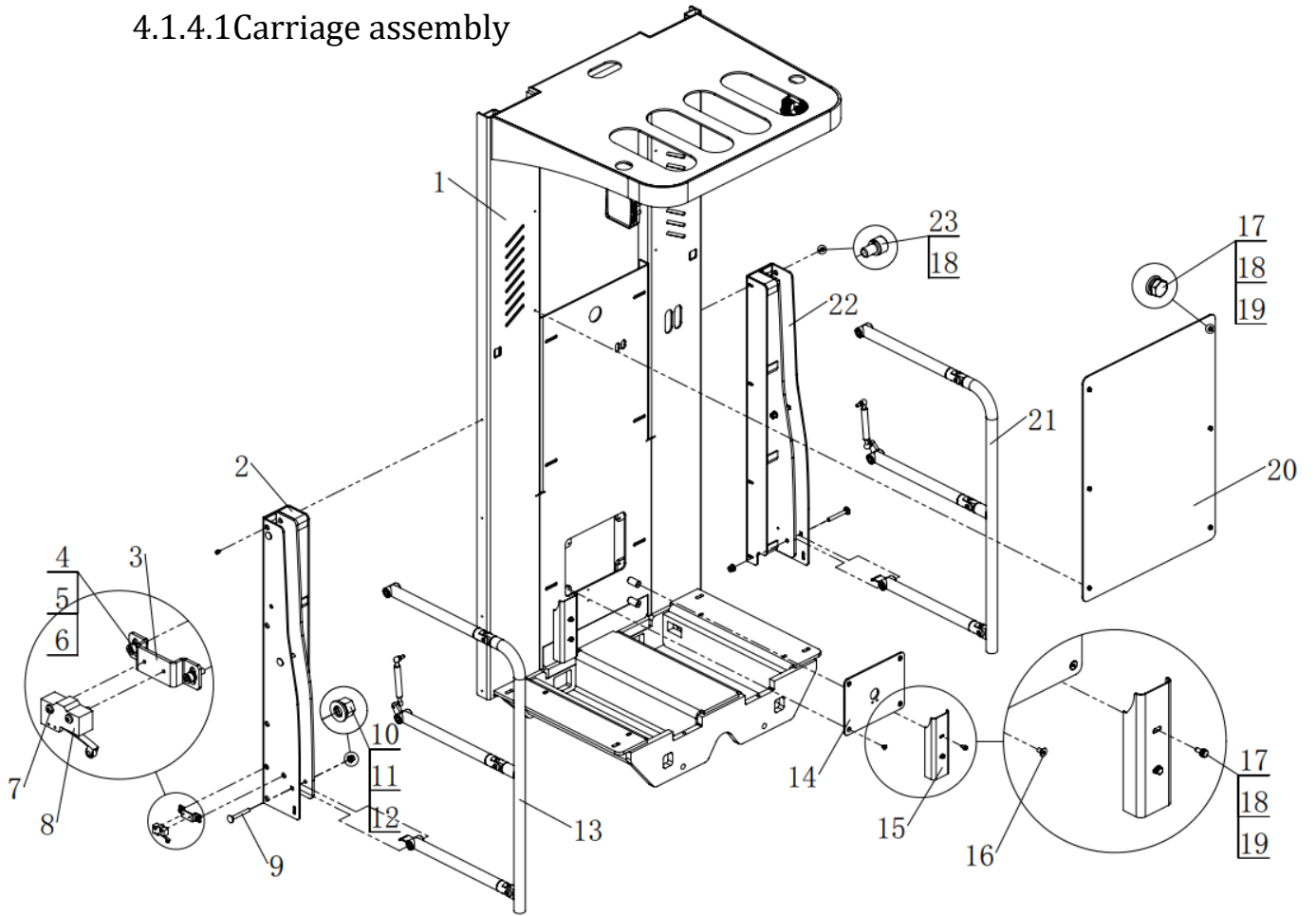


---

#### 4.1.4Cockpit assembly

No.	Code	Description	Specification	QTY	Remark
1	JXG10-02.4.1	Carriage assembly		1	
2	JXG10-02.4.4	Instrument panel components		1	
3	JXG10-02.4.3	Pedal assembly		1	
4	JXG10-02.4.2	Lifting frame components		1	
5	03.0258	Hexagon nut	M8	6	GB/T 6170-2000
6	03.0012	Spring Washer	φ8	12	GB/T 93-1987
7	03.0050	Flat Washer	φ8	16	GB/T 97.1-2002
8	03.0154	Hexagon socket head cap screws	M8×20	6	GB/T 70.1-2000
9	03.1048	Semicircle head square neck bolt	M8×25	2	GB/T 794-93
10	03.0379	Hexagon bolts full thread	M8×30	4	GB/T 5783-2000

### 4.1.4.1 Carriage assembly



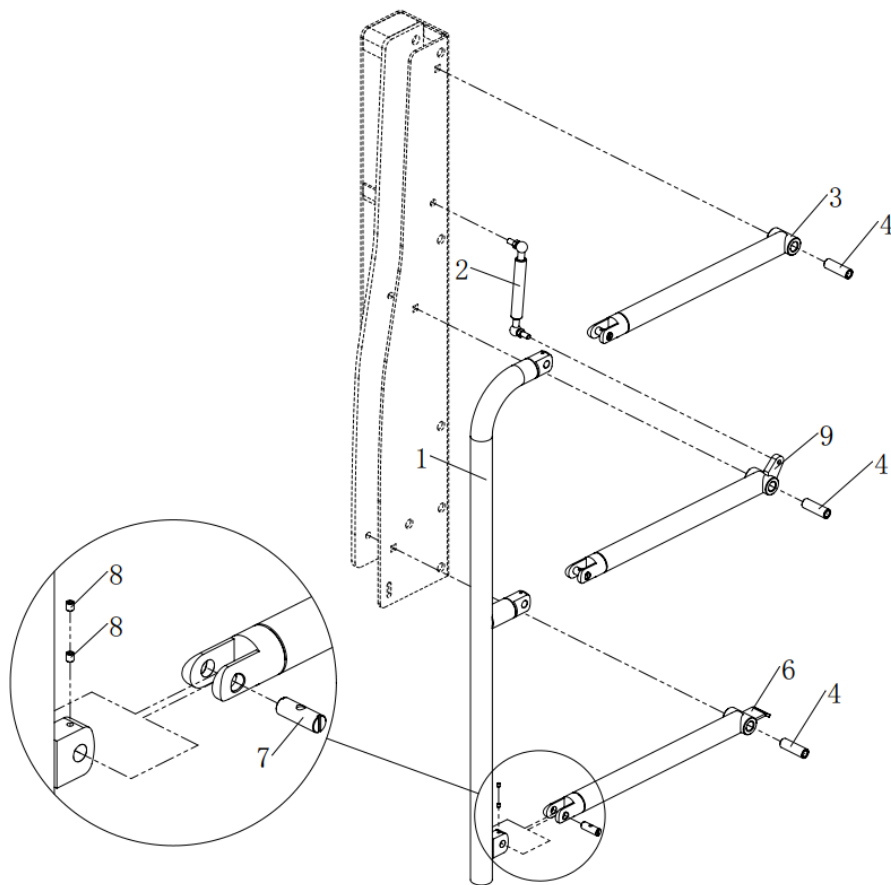
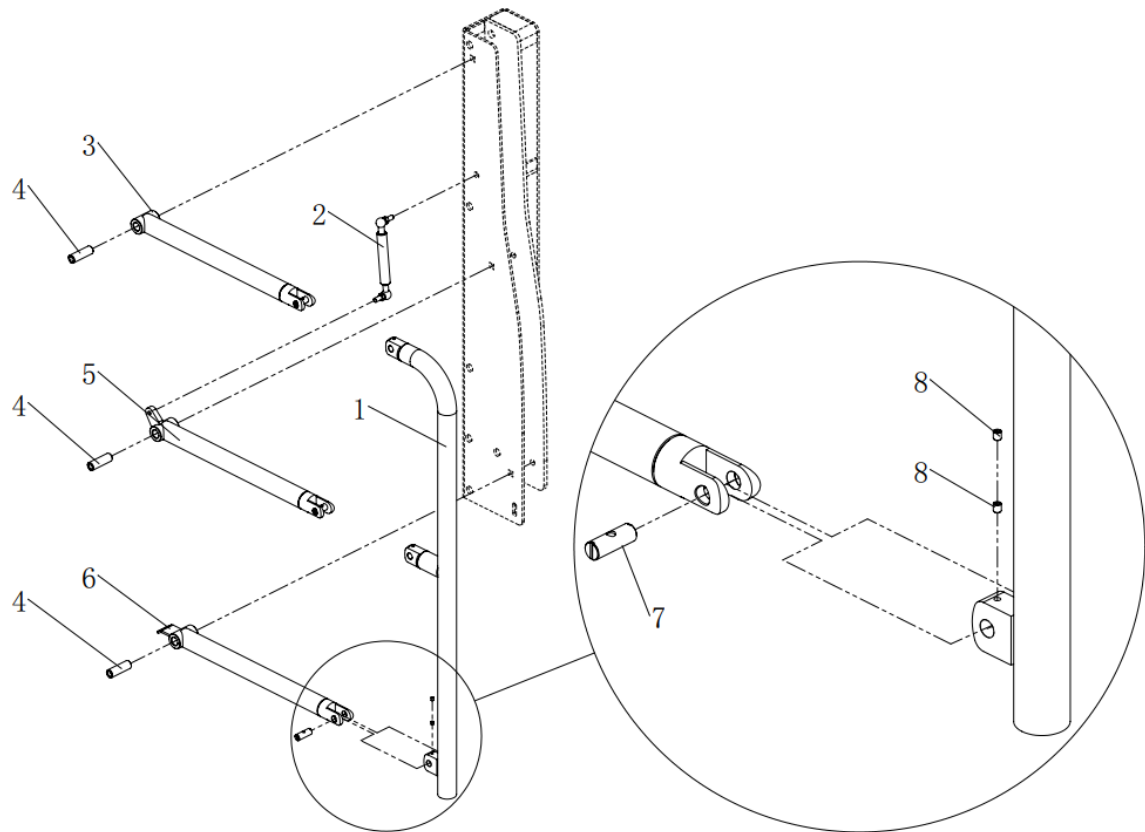
#### 4.1.4.1 Carriage assembly

No.	Code	Description	Specification	QTY	Remark
1	JXG10-02.4.1.1	Carriage welded		1	
2	JXG10-02.4.1.4	Arm guard bending plate welded Right		1	
3	JXG10-02.4.1.8	Switch Mounting plate		2	
4	03.0133	Hexagon socket head cap screws	M5×16	4	GB/T 70.1-2000
5	03.0007	Spring Washer	φ5	4	GB/T 93-1987
6	03.0055	Flat Washer	φ5	4	GB/T 97.1-2002
7	03.0223	Cross recessed pan head screw	M4×25	4	GB/T 818-2000
8	02.01.2182	Micro Switch (Long)	RZ-15GW2S-B3	2	
9	03.1047	Semicircle head square neck bolt	M10×80	6	GB/T 794-93
10	03.0259	Hexagon nut	M10	6	GB/T 41-2000
11	03.0014	Spring Washer	φ10	6	GB/T 93-1987
12	03.0043	Flat Washer	φ10	6	GB/T 97.1-2002
13	JXG10-02.4.1.3	Protective arm assembly Right		1	
14	JXG10-02.4.1.9	Seal plate		1	
15	JXG10-02.4.1.10	Bending plate		2	
16	03.0090	Hexagon socket countersunk head screws	M6×12	4	GB/T 70.3-2000
17	03.0411	Hexagon bolts full thread	M6×16	10	GB/T 5783-2000
18	03.0011	Spring Washer	φ6	22	GB/T 93-1987
19	03.0049	Flat Washer	φ6	14	GB/T 97.1-2002
20	02.FHDB.0224	4mm Protective baffle (CL1028C)	570×790 (Without slotted)	1	
21	JXG10-02.4.1.2	Protective arm assembly Left		1	
22	JXG10-02.4.1.5	Arm guard bending plate welded Left		1	
23	03.0175	Hexagon socket head cap screws	M6×10	8	GB/T 70.1-2000
24	02.01.30743	Combination roller	CBA102.8-1TSG1	4	
25	JXG10-02.4.1.7	Pressing plate		1	
26	JXG10-02.4.1.6	Drag chain bracket (3)		1	

---

27	03.0410	Hexagon bolts full thread	M6×20	2	GB/T 5783-2000
28	03.0147	Hexagon socket head cap screws	M6×16	2	GB/T 70.1-2000
29	03.00491	Flat Washer	φ4	3	GB/T 97.1-2002
30	03.0008	Spring Washer	φ4	3	GB/T 93-1987
31	03.0123	Hexagon socket head cap screws	M4×10	3	GB/T 70.1-2000

#### 4.1.4.1.1 Protective arm assembly

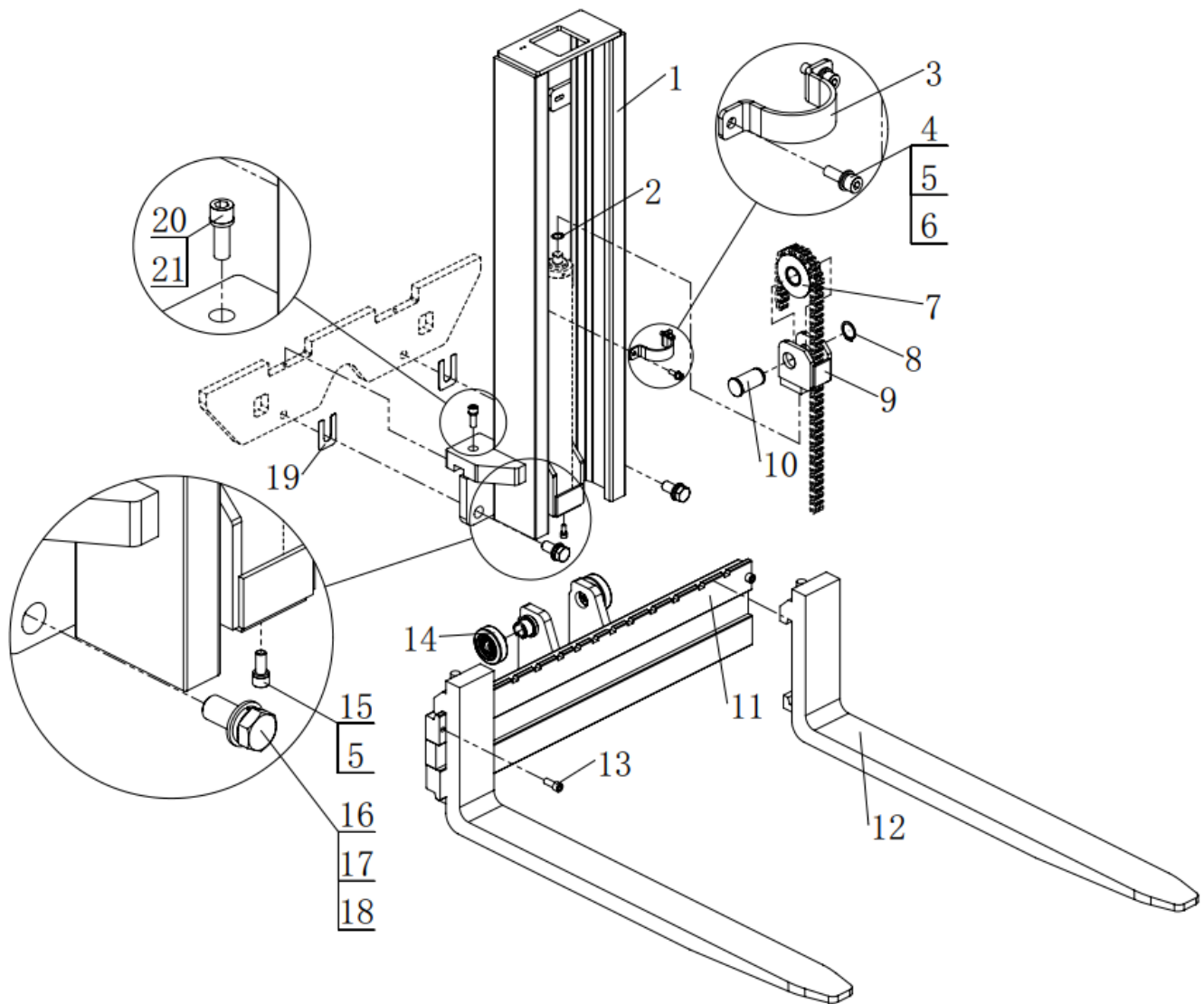




#### 4.1.4.1.1 Protective arm assembly

No.	Code	Description	Specification	QTY	Remark
1	JXG10-02.4.1.2.6	Arm connecting rod welding		2	
2	JXG10-02.4.1.2.5	Gas spring (200N)		2	
3	JXG10-02.4.1.2.1	Protection arm welding		2	
4	JXG10-02.4.1.2.6	bushing		6	
5	JXG10-02.4.1.3.1	Protection arm welding Right(2)		1	
6	JXG10-02.4.1.2.3	Protection arm welding(3)		2	
7	JXG10-02.4.1.2.7	Small wheel		6	
8	03.0268	Hexagon socket set screws with flat end	M5×6	12	GB/T 77-2000
9	JXG10-02.4.1.2.2	Protection arm welding Left(2)		1	

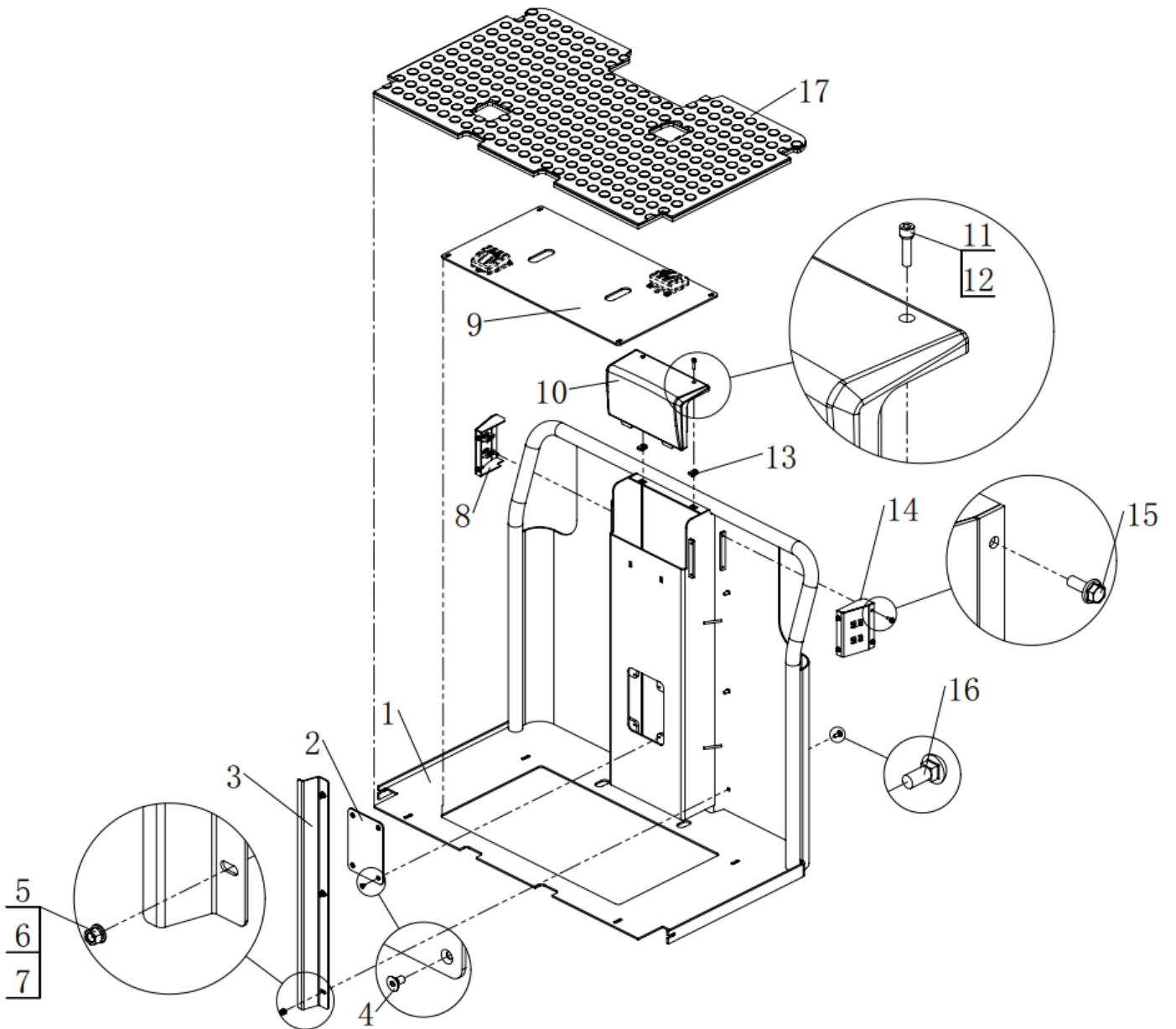
#### 4.1.4.2 Lifting frame components



#### 4.1.4.2 Lifting frame components

No.	Code	Description	Specification	QTY	Remark
1	JXG10-02.4.2.1	Lifting frame welding		1	
2	03.0064	Circlip for shaft	20	1	GB 894.1-86
3	JXG10-02.4.2.8	Cylinder Hoop		1	
4	03.0156	Hexagon socket head cap screws	M8×25	2	GB/T 70.1-2000
5	03.0012	Spring Washer	φ8	3	GB/T 93-1987
6	03.0050	Flat Washer	φ8	2	GB/T 97.1-2002
7	02.01.3095	Sprocket	D8S90-82001	1	
8	03.0583	Circlip for shaft	35	1	GB 894.1-86
9	JXG10-02.4.2.4	Sprocket seat welding		1	
10	JXG10-02.4.2.6	Sprocket shaft		1	
11	JXG10-02.4.2.2	Lifting carriage welding		1	
12	JXG10-02.4.2.7	Fork (1070)		2	
13	03.0171	Hexagon socket head cap screws	M12×30	2	GB/T 70.1-2000
14	02.01.3071	Combination roller	CRA78.3-12S	4	
15	03.0154	Hexagon socket head cap screws	M8×20	1	GB/T 70.1-2000
16	03.0368	Hexagon bolts full thread	M20×45	2	GB/T 5783-2000
17	03.0018	Spring Washer	Φ20	2	GB/T 93-1987
18	03.0042	Flat Washer	Φ20	2	GB/T 97.1-2002
19	JXG10-02.4.2.9	垫板		2	
20	03.0172	Hexagon socket head cap screws	M12×35	2	GB/T 70.1-2000
21	03.0015	Spring Washer	φ12	2	GB/T 93-1987

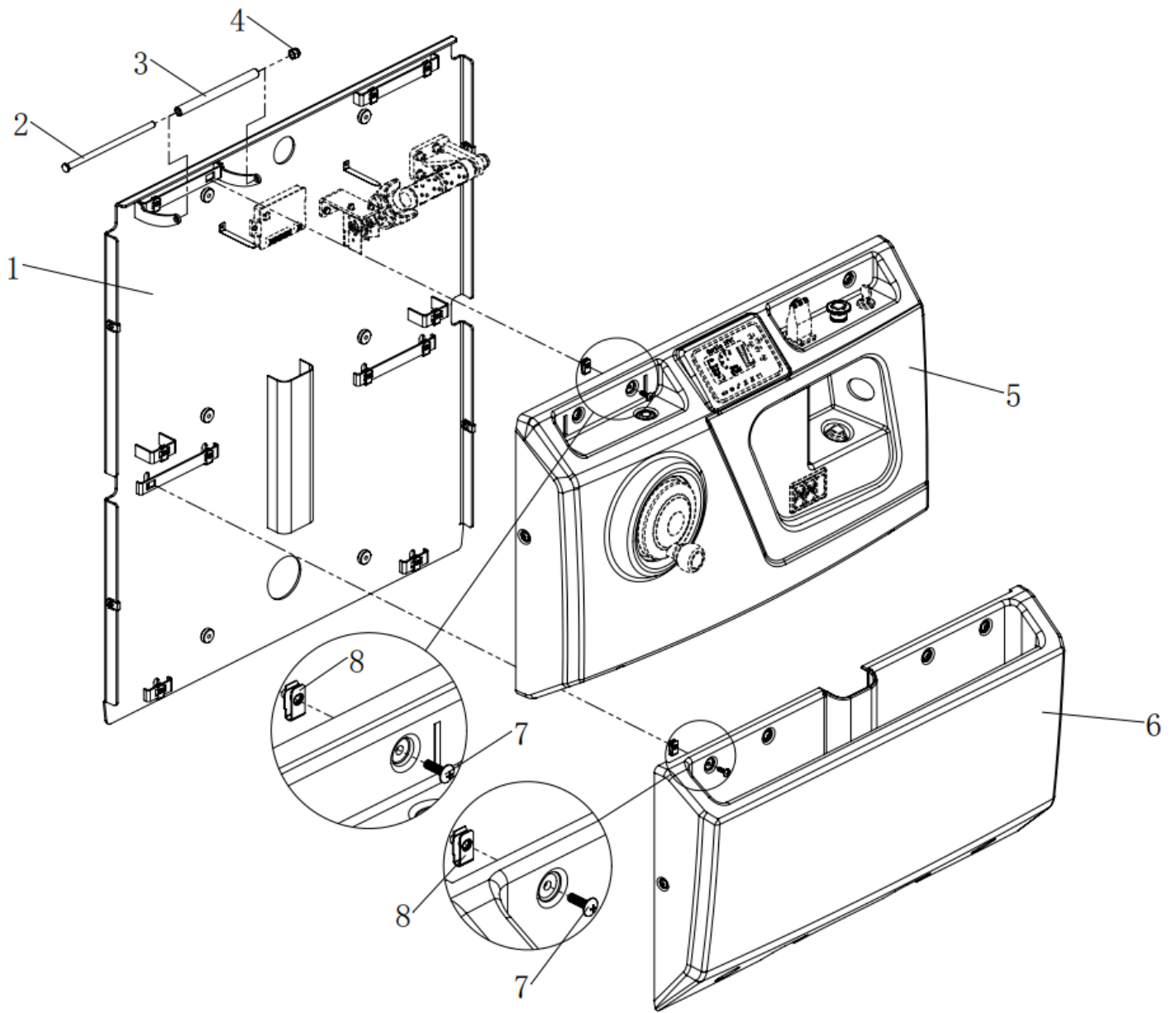
### 4.1.4.3 Lifting frame components



#### 4.1.4.3 Lifting frame components

No.	Code	Description	Specification	QTY	Remark
1	JXG10-02.4.3.1	Pedal welded		1	
2	JXG10-02.4.3.4	Cover plate		1	
3	JXG10-02.4.3.5	Baffle		2	
4	03.0090	Hexagon socket countersunk head screws	M6×12	4	GB/T 70.3-2000
5	03.0258	Hexagon nut	M8	6	GB/T 6170-2000
6	03.0012	Spring Washer	φ8	6	GB/T 93-1987
7	03.0050	Flat Washer	φ8	6	GB/T 97.1-2002
8	JXG10-02.4.3.2	Switch box welding left		1	
9	JXG10-02.4.3.7	Cover plate 2		1	
10	JXG10-02.4.3.6	Cushion		1	
11	03.0150	Hexagon socket head cap screws	M6×25	2	GB/T 70.1-2000
12	03.0011	Spring Washer	φ6	2	GB/T 93-1987
13	03.0587	Spring clip nut	M6	2	
14	JXG10-02.4.3.3	Switch box welding Right		1	
15	03.06130	Hexagon head flange bolts	M6×8	8	GB/T 5789-1986
16	03.1049	Semicircle head square neck bolt	M8×20	6	GB/T 794-93
17	JXG10-02.4.5	Pedal pads		1	

#### 4.1.4.4 Instrument panel components

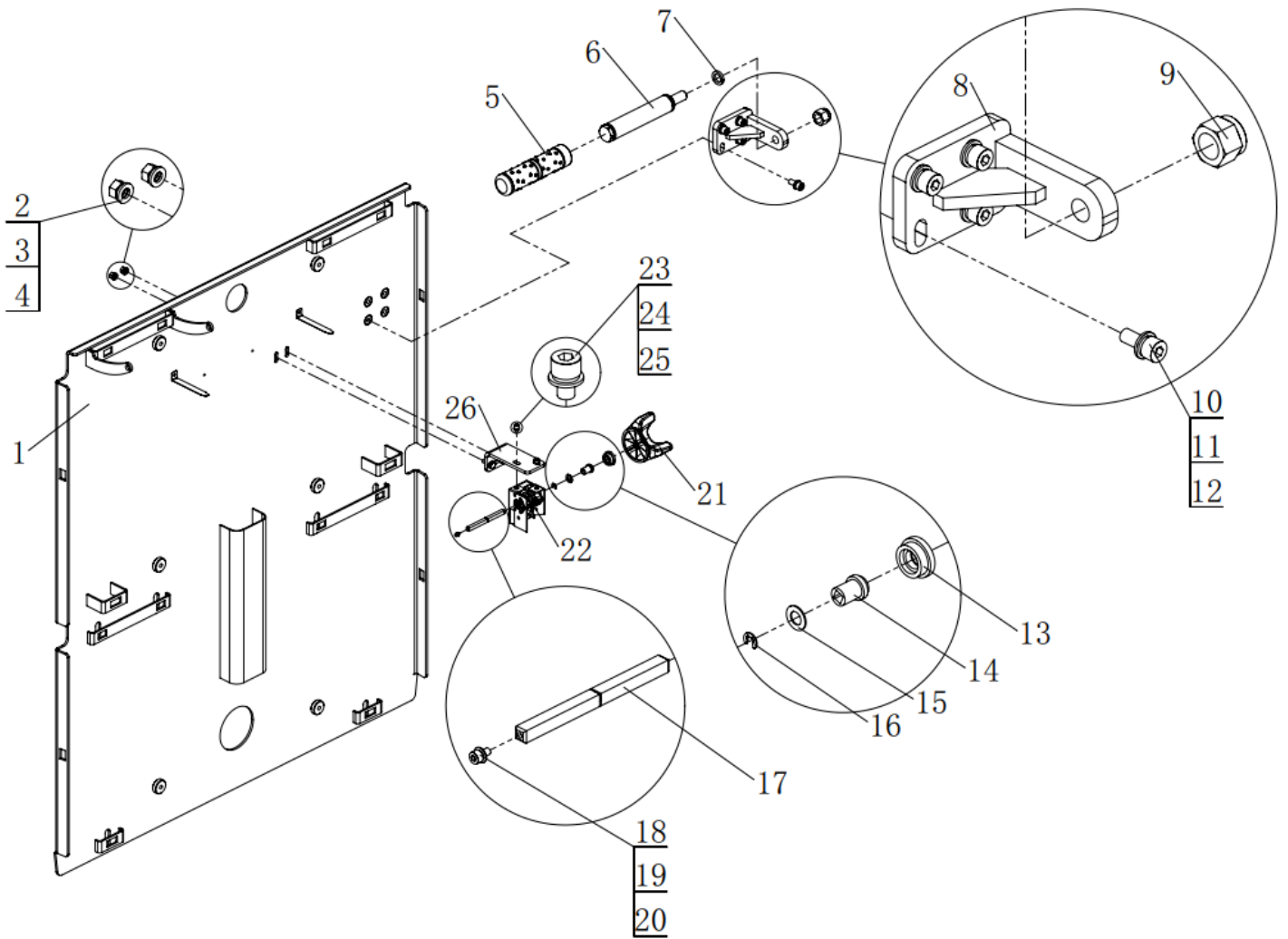


---

#### 4.1.4.4 Instrument panel components

No.	Code	Description	Specification	QTY	Remark
1	JXG10-02.4.4.1	Mounting frame Assembly		1	
2	JXG10-02.4.4.5	Screw		1	
3	JXG10-02.4.4.4	Screw sleeve		1	
4	03.0243	Hexagon lock nut	M10	1	GB/T 889.1-2000
5	JXG10-02.4.4.2.2	Instrument desk		1	
6	JXG10-02.4.4.3	Lower cover		1	
7	03.02393	Large flat head cross screw	M6×16	16	GB 973-1976
8	03.0587	Spring clip nut	M6	16	

#### 4.1.4.4.1 Mounting frame Assembly

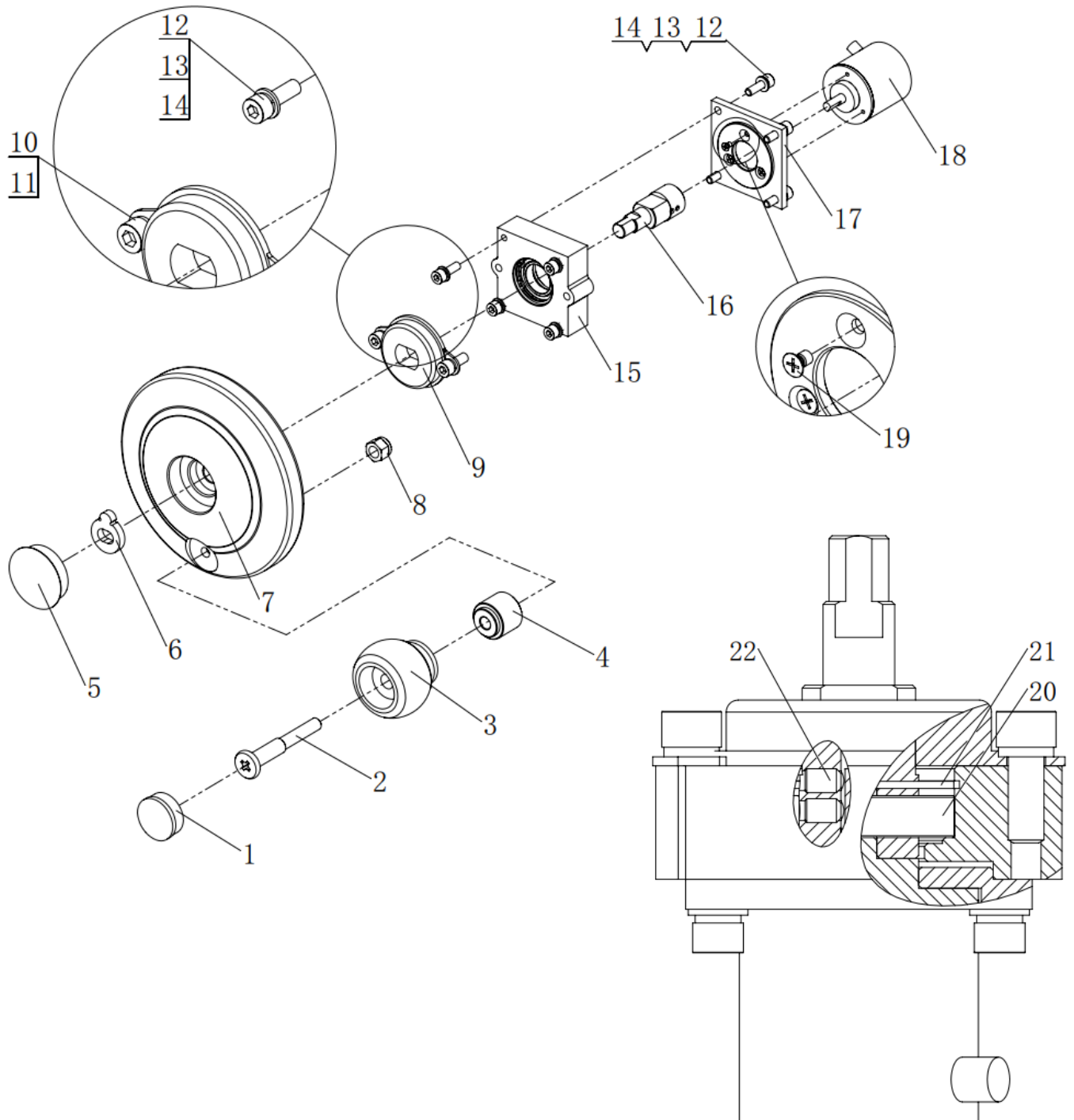




#### 4.1.4.4.1 Mounting frame Assembly

No.	Code	Description	Specification	QTY	Remark
1	JXG10-02.4.4.1.1	Mounting frame welding		1	
2	03.0049	Flat Washer	φ6	4	GB/T 97.1-2002
3	03.0011	Spring Washer	φ6	2	GB/T 93-1987
4	03.0257	Hexagon nut	M6	2	GB/T 6170-2000
5		Handle silicone sleeve		1	
6	JXG10-02.4.4.1.3.2	Handle welded		1	
7	03.0017	Spring Washer	φ16	1	GB/T 93-1987
8	JXG10-02.4.4.1.3.1	Handle base welding		1	
9	03.0247	Hexagon lock nut	M16	1	GB/T 889.1-2000
10	03.0154	Hexagon socket head cap screws	M8×20	4	GB/T 70.1-2000
11	03.0012	Spring Washer	φ8	4	GB/T 93-1987
12	03.0050	Flat Washer	φ8	4	GB/T 97.1-2002
13	30.01.3425	Outer Shaft sleeve	ET-126	1	
14	30.01.3426	Inner Shaft sleeve	ET-126	1	
15		Wave Washer	8	1	GB/T 955-1987
16		Split washer	5	1	GB/T 896-86
17	JXG10-02.4.4.1.2.2	Axis		1	
18	03.0732	Hexagon socket head cap screws	M3×10	1	GB/T 70.1-2000
19	03.00091	Spring Washer	φ3	1	GB/T 93-1987
20	03.0053	Flat Washer	φ3	1	GB/T 97.1-2002
21	02.01.317720	Big handle accelerator Knob		1	
22	02.01.2151	Accelerator		1	
23	03.0139	Hexagon socket head cap screws	M5×10	2	GB/T 70.1-2000
24	03.0007	Spring Washer	φ5	2	GB/T 93-1987
25	03.0055	Flat Washer	φ5	2	GB/T 97.1-2002
26	JXG10-02.4.4.1.2.1	Accelerator Mounting Bracket (1)		1	

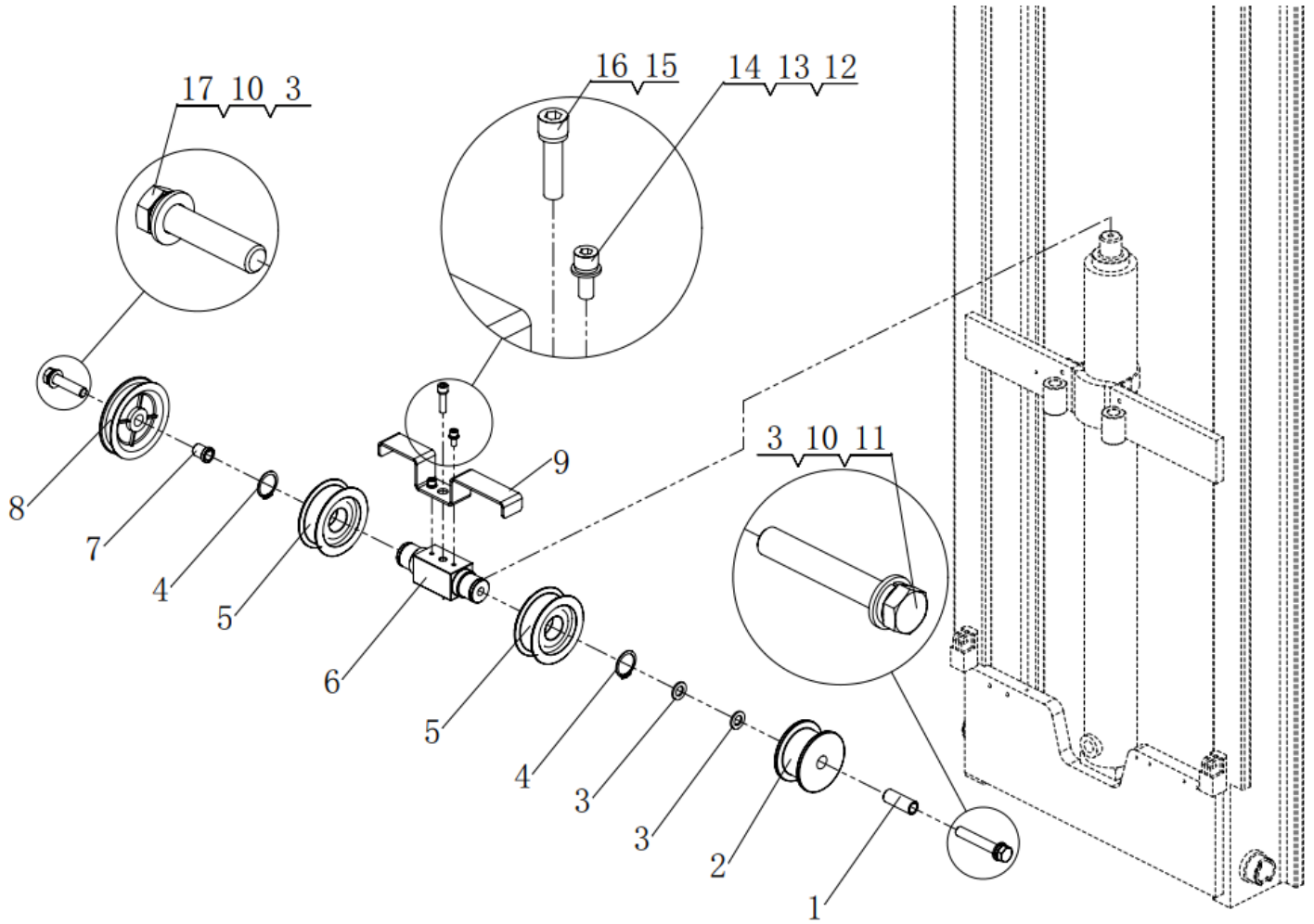
#### 4.1.4.4.2 Steering wheel assembly



#### 4.1.4.4.2 Steering wheel assembly

No.	Code	Description	Specification	QTY	Remark
1	02.01.9017	Q15GB Direction handle cover		1	
2	02.01.9019	Q15GB Direction handle Screw		1	
3	02.01.9018	Q15GB Direction handle Lever		1	
4	Q15GB-01.7.4.2	Handle post		1	
5	19.0795	Nylon plastic cover	SKT-38	1	
6	Q15GB-01.7.4.3	Anti-rotation pad		1	
7	Q15GB-01.7.4.1	Wheel cover		1	
8	03.0244	Hexagon lock nut	M8	1	GB/T 6182-2000
9	19.1295	Rotating damper	0.5NM	1	ZB-48c19
10	03.0147	Hexagon socket head cap screws	M6×16	2	GB/T 70.1-2000
11	03.0011	Spring Washer	φ6	2	GB/T 93-1987
12	03.0133	Hexagon socket head cap screws	M5×16	8	GB/T 70.1-2000
13	03.0007	Spring Washer	φ5	8	GB/T 93-1987
14	03.0055	Flat Washer	φ5	8	GB/T 97.1-2002
15	JXG10-02.4.4.2.1.1	Encoder seat		1	
16	JXG10-02.4.4.2.1.2	Shaft		1	
17	QGB15E-01.6.2.1	Flange		1	
18	02.BMQ.2200	Steering encoder	E6B2-CWZ6C	1	
19	03.04171	Cross recessed countersunk head screws	M3×5	3	GB/T 819.1-2000
20	03.90.099	Deep groove ball bearing	61804-2Z	1	GB/T 276-94
21		Circlip for hole	32	1	GB 893.1-86
22	03.02680	Hexagon socket set screws with flat end	M4×6	2	GB/T 77-2000

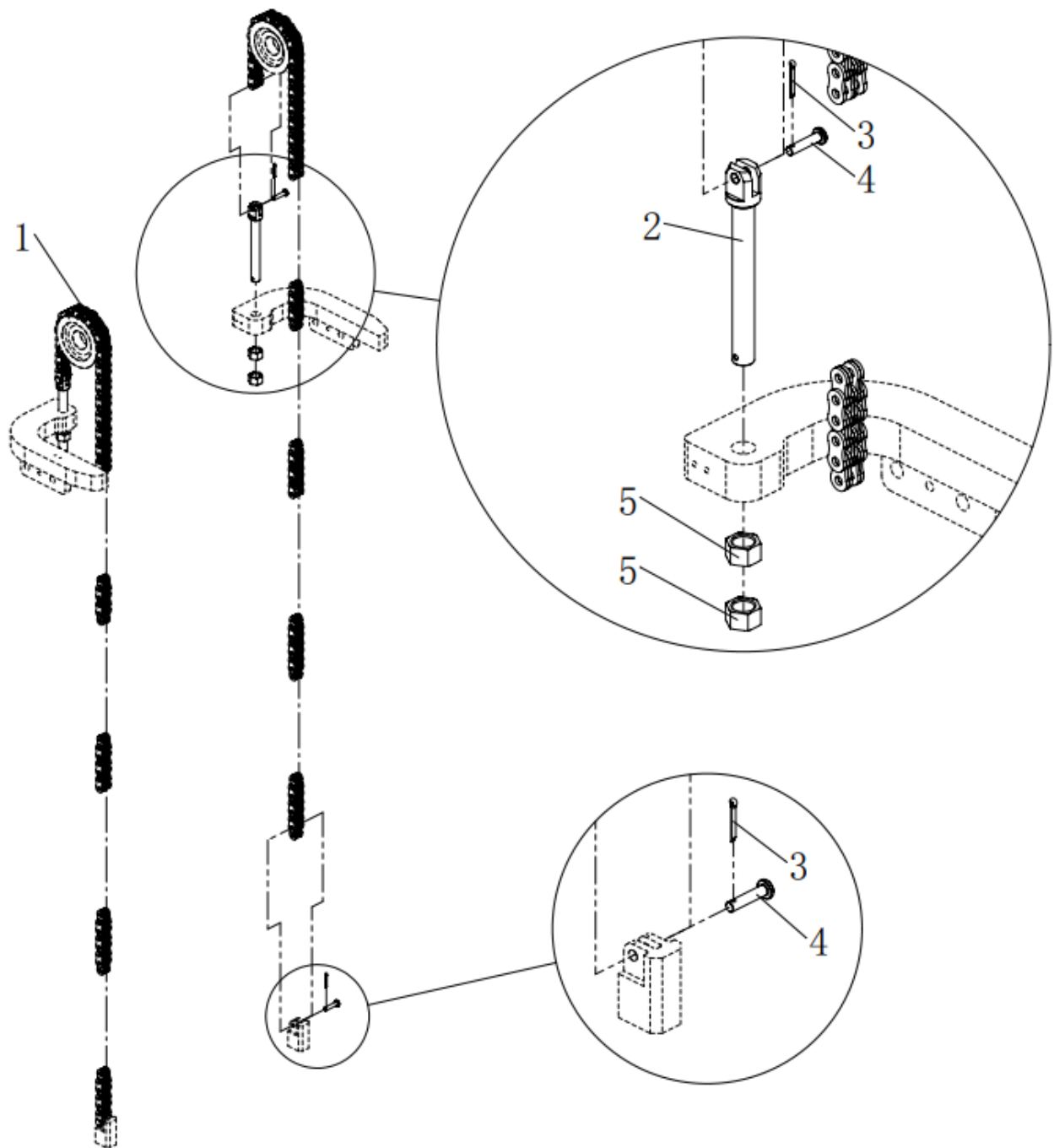
### 4.1.5 Sprocket frame assembly

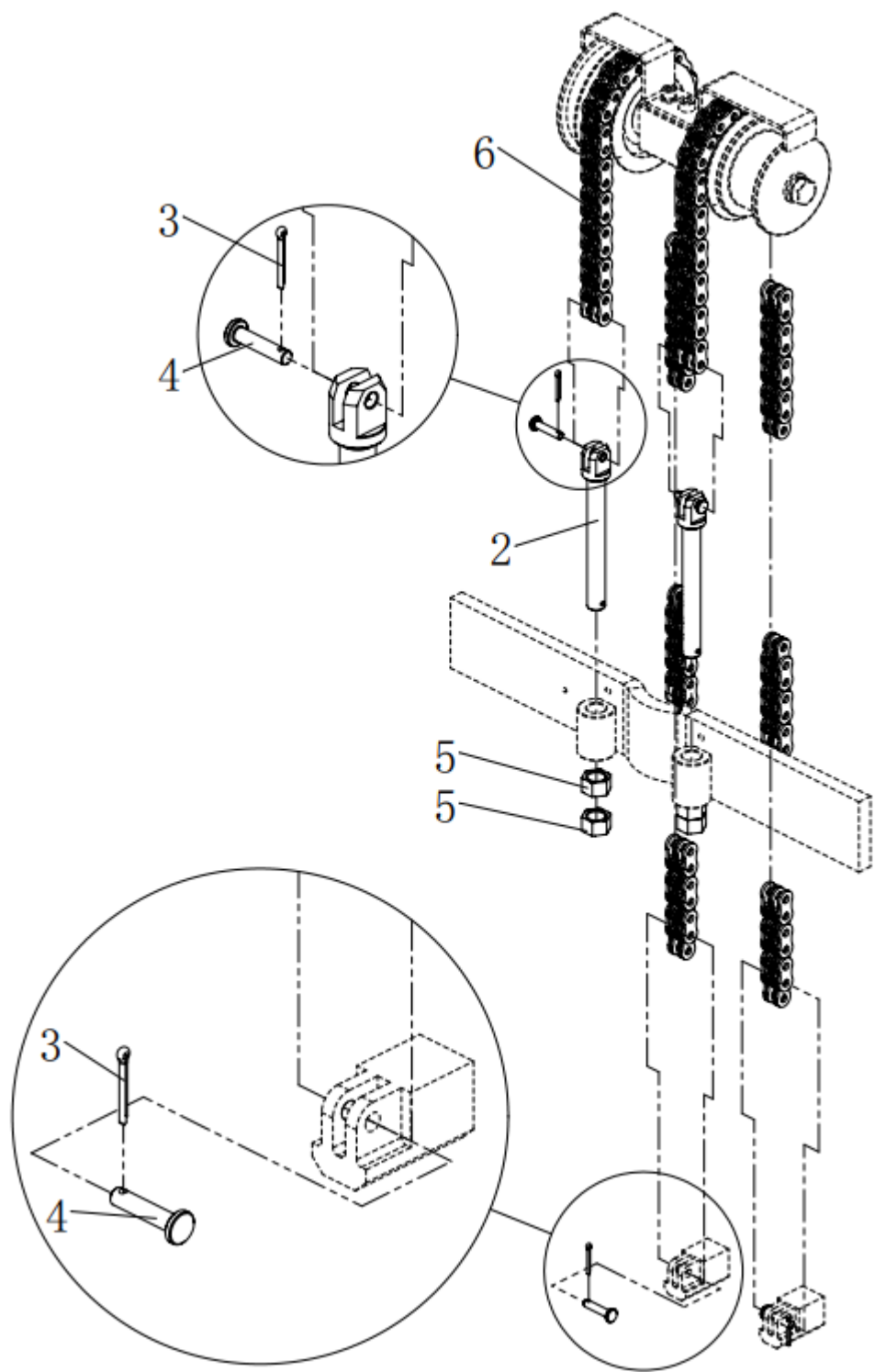


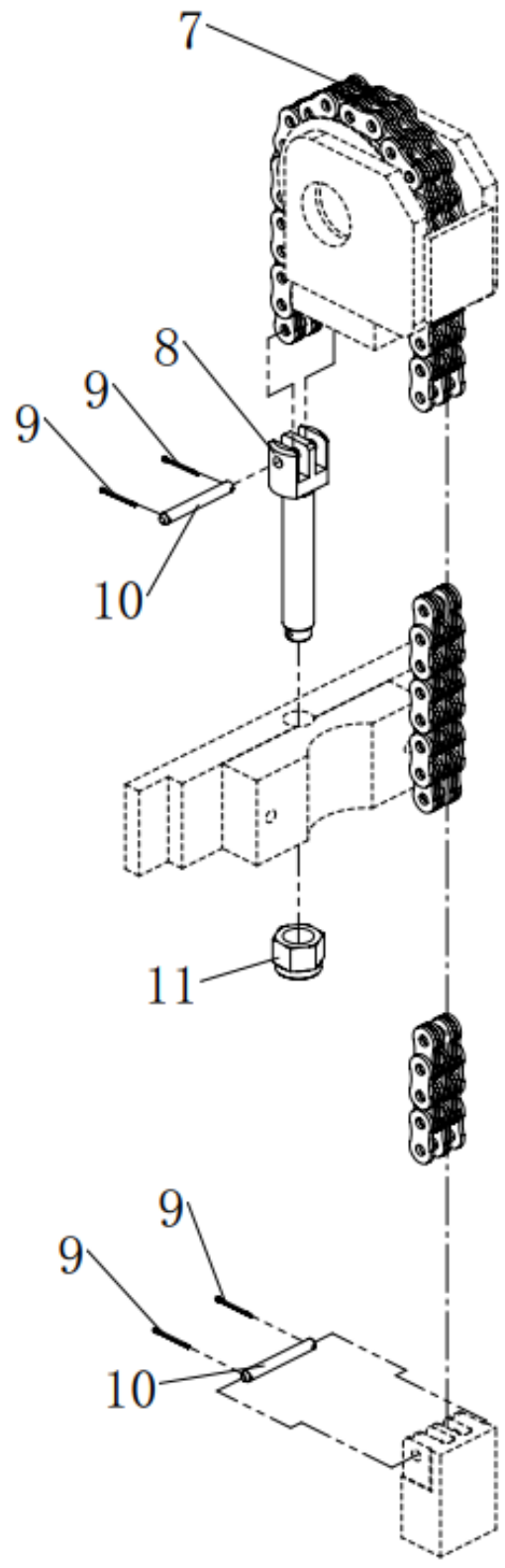
#### 4.1.5 Sprocket frame assembly

No.	Code	Description	Specification	QTY	Remark
1	JXG10-02.2.4	Spacer (2)		1	
2	JXG10-02.2.3	pulley		1	
3	03.0047	Flat Washer	φ16	4	GB/T 97.1-2002
4	03.0070	Circlip for shaft	40	2	GB 894.1-86
5	30.01.2980	Door frame sprocket		2	CG40A1-20
6	JXG10-02.7.1	Footstock		1	
7	JXG10-02.7.2	Spacer		1	
8	02.01.9049	Tubing pulley	φ132×φ20×24	1	
9	JXG10-02.7.3	Bracket		1	
10	03.0017	Spring Washer	φ16	2	GB/T 93-1987
11	03.0397	Hexagon bolt	M16×100	1	GB/T 5782-2000
12	03.0050	Flat Washer	φ8	2	GB/T 97.1-2002
13	03.0012	Spring Washer	φ8	2	GB/T 93-1987
14	03.0154	Hexagon socket head cap screws	M8×20	2	GB/T 70.1-2000
15	03.0014	Spring Washer	φ10	1	GB/T 93-1987
16	03.0168	Hexagon socket head cap screws	M10×40	1	GB/T 70.1-2000
17	03.0395	Hexagon bolt	M16×70	1	GB/T 5782-2000

## 4.2 Chain assembly









## 4.2 Chain assembly

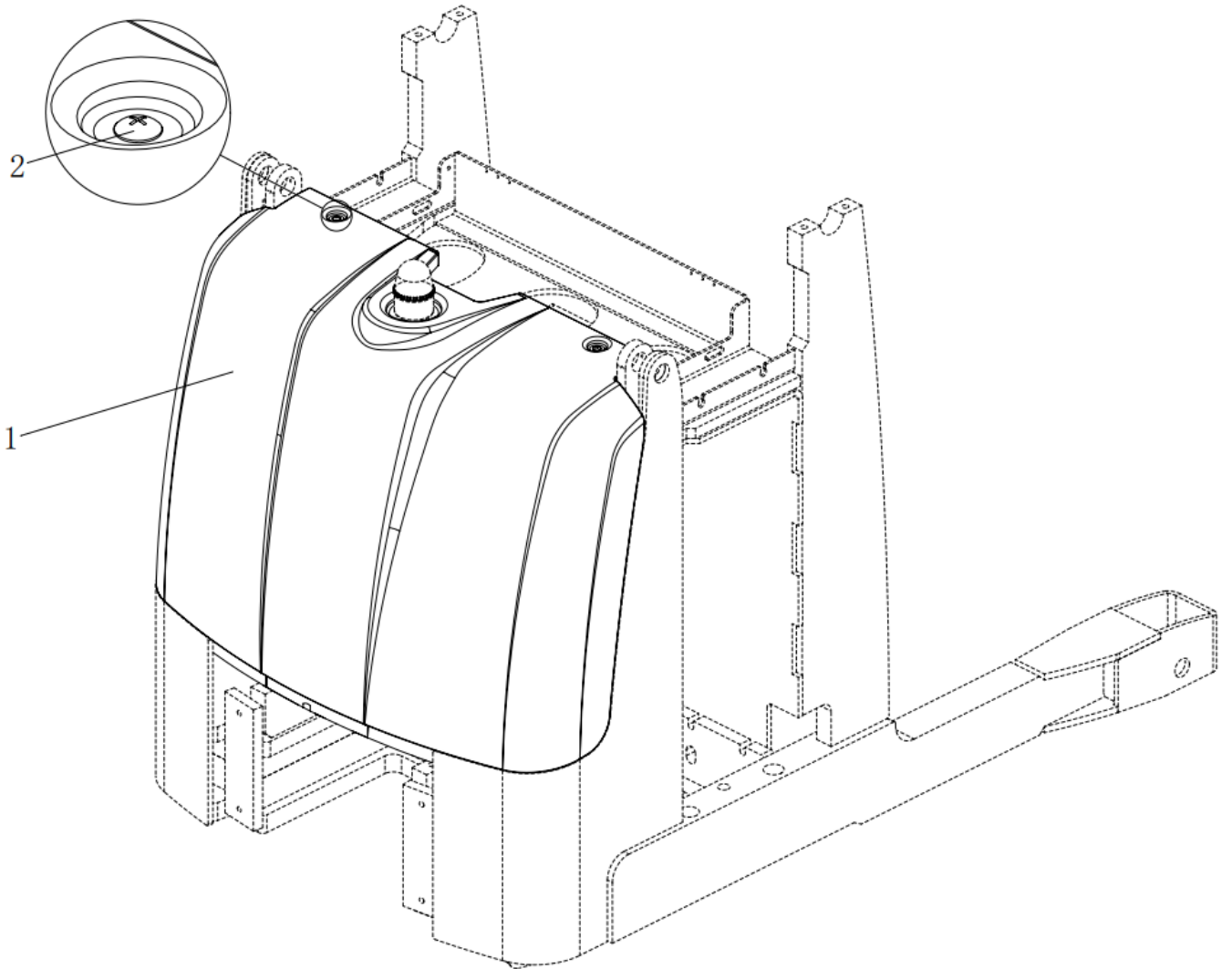
No.	Code	Description	Specification	QTY	Remark
1		Leaf chain		2	LH1244
2	Q25GA-05.1.3	Chain pull rod		2	
3	03.0332	Cottor pin	3.2×25	4	GB/T 91-2000
4	Q25GA-05.2.4	Pull rod pin roll		4	
5	03.0261	Hexagon nut	M18	4	GB/T 6170-2000
6		Leaf chain		2	LH1244
7		Leaf chain		1	LH1046
8	CL10-7B	Chain pull rod B		1	
9	03.0591	Cottor pin	1.6×20	4	GB/T 91-2000
10	03.03201	Pin with hole	6×50	2	GB 880-86
11	03.0247	Hexagon lock nut	M16	1	GB/T 889.1-2000

Lifting height	Chain Specification	Chain Model	QTY
4500	115 Piece	LH1244	2
	71 Piece	LH1244	2
	47 Piece	LH1046	1

---

## 5.Cover system

### 5.1Cover Assembly

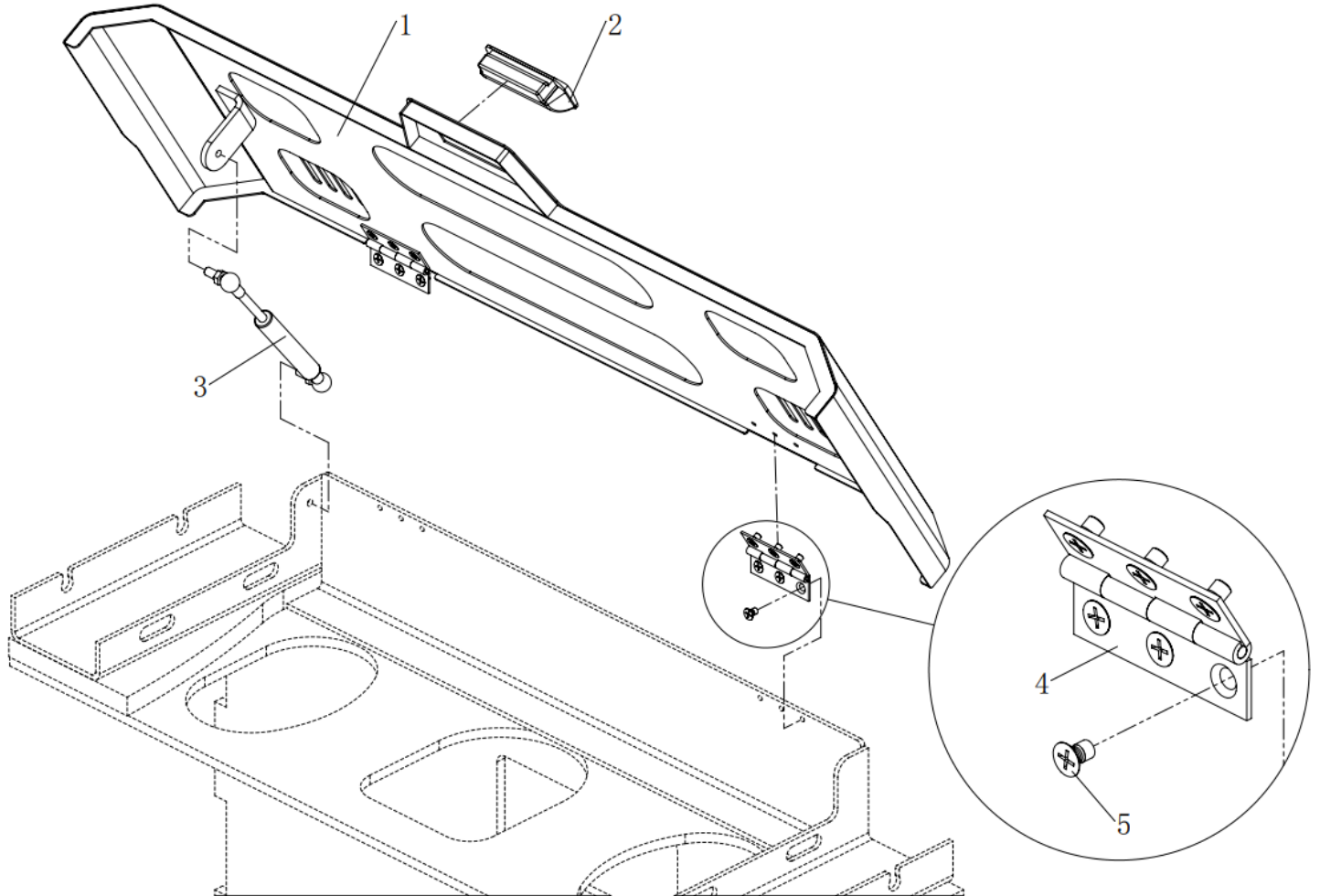


---

## 5.1Cover Assembly

No.	Code	Description	Specification	QTY	Remark
1	JXG10-04.1	Cover		1	
2	03.0995	Large flat head cross screw	M6×16	2	GB 973-1976

## 5.2 Battery cover assembly



---

## 5.2 Battery cover assembly

No.	Code	Description	Specification	QTY	Remark
1	JXG10-09.1	Battery Cover plate Welded		1	
2	03.0208	Embedded handle	5mm	1	
3	JXG10-02.4.1.2.5	Gas spring assembly(200N)		1	
4	02.01.32912	Battery box cover hinge (small)	75*50*2	2	
5	03.0418	Cross recessed countersunk head screws	M6×10	12	GB/T 819.1-2000

**Note: the manufacturer reserves the right of interpretation.**

**If have change not notice additionally!!**