

Qwerkywriter[®]

TYPEWRITER INSPIRED MECHANICAL KEYBOARD™

QWERKYWRITER S USB-C Edition



Contents

Product Features.....	4-7
Product Key.....	8
Charging Your Qwerkywriter.....	9
Connectivity.....	10-13
Scroll Knobs.....	14
Return Bar.....	15
Key Functions.....	16-17
Warranty, Maintenance, Set Up & Contact.....	18-19

**THANK YOU FOR YOUR PURCHASE AND
ENJOY YOUR TYPING EXPERIENCE WITH THE
QWERKYWRITER® S!**

PLEASE READ! FROM YOUR FRIENDS AT QWERKYTOYS!

- The USB Cable needs to be FIRMLY pushed in to make a solid connection.
- Avoid using USB hubs or adapters that aren't a direct connection to your computer or tablet! USB hubs that have power should be okay! Otherwise bad things will happen like lag or repeated keystrokes (which is no good since good writing is already hard!).
- Our Qwerkywriter is a USB AND a Bluetooth capable device, unlike most keyboards which are one or the other! So it can be a little complex so we really recommend visiting this link for a quick refresher!
<https://www.qwerkywriter.com/pages/new-user-setup-getting-started>
- PLEASE contact support@qwerkytoys.com before you consider returning your product. We have very smart and friendly folks who will respond lightning quick! Thank you!

Please don't forget to leave a review!



Bluetooth 3
 Bluetooth 2
 Bluetooth 1
 USB Mode LED
 USB / BT Toggle Switch

Caps Lock
 Nkey/6key LED
 Battery LED



Battery switch*
 ON(-)/OFF(o)

USB-C port
 Pairing button

* This switch only enables/disables Bluetooth mode.

For new user set up, please visit:
<https://www.qwerkywriter.com/pages/new-user-setup-getting-started>



Product Features



Multi Device Wireless Connectivity -

The Qwerkywriter® S can be connected to multiple wireless devices at the same time. So now you can have a mobile phone, a tablet, and a laptop all connected wirelessly to the Qwerkywriter® S.



Wired USB mode with NKRO support -

This is a fancy way of saying that in wired USB mode, Qwerkywriter® S can perform at the highest levels without dropping letters or strokes. Not all cables will allow wired USB mode, the cable that comes with the Qwerkywriter® S should be the only cable used for wired USB mode. All cables that fit will charge though.



Dual Scroll Knob Encoders -

The Qwerkywriter® S features dual function scroll knobs that control Volume on the left knob and Mouse Scroll on the right knob which works with Android, MacOS and WIN10.



Mechanical Switches -

The Qwerkywriter® S uses the famed Cherry™ MX “clicky” switches for that ultimate tactile feedback experience.





Integrated Tablet Stand -

The Qwerkywriter® S has a built in integrated tablet stand that can accommodate comfortably up to 10.5 inch screens. It can also accommodate most 12 inch tablets as long as it's less than 5/8 inch thick.



Macro Return bar - The Qwerkywriter® S signature all metal macro programmable return bar defaults to the "enter" key but you can program up to 16 characters to generate short signatures and more.



Scratch Resistant All Aluminum Chassis -

The Qwerkywriter® S chassis is constructed entirely out of a new scratch resistant aluminum alloy for an incredible feel of quality and durability.



Typewriter Inspired Keycaps -

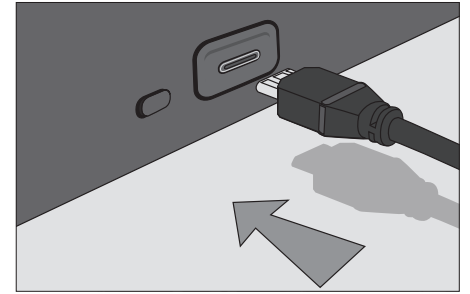
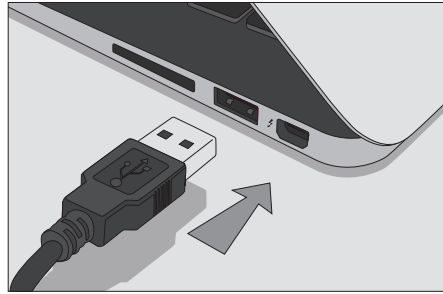
The beautiful, typewriter inspired 2 piece keycaps of the Qwerkywriter® S has numerous improvements, including better stability and automotive grade electroplating.



Charging Your Qwerkywriter



Battery Charge Indication



The Qwerkywriter® S internal battery will fully charge after 6-8 hours. The charge should last up to 3-4 weeks of normal use. We recommend plugging the Qwerkywriter via USB directly to a computer USB port or a sufficiently powered USB hub.

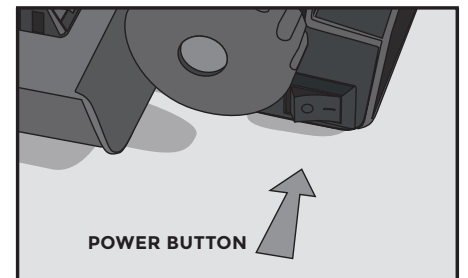
- **Battery LED will flash if the internal battery is failing or is not properly connected.**
- **Battery LED will stay on when charging.**
- **Battery LED will turn off when fully charged.**
- **If Battery LED is not on, please check your cable.**

Connectivity



Connecting the Qwerkywriter® S:

1 - Turn the Qwerkywriter® S power to ON



2 - Choose which of the 3 Bluetooth slots you would like to pair to. Select Bluetooth slot:

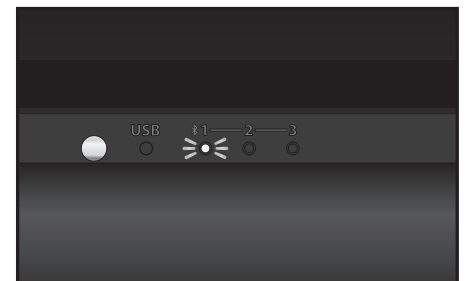
FN + 1 for slot 1

FN + 2 for slot 2

FN + 3 for slot 3



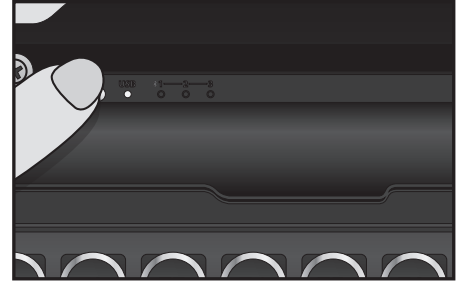
3 - Corresponding LED will blink 3 times, indicating the slot selected.



Connectivity (cont.)

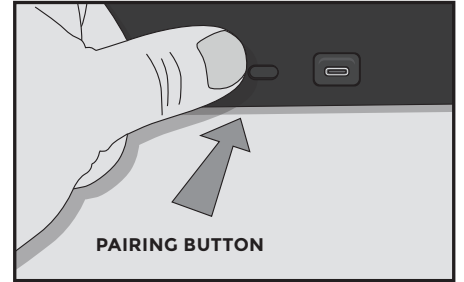


4 - If no LED lights up then you are in USB mode. Simply press the USB/Bluetooth button to switch to Bluetooth mode.



5 - Press the Qwerkywriter® S pair button to enable pairing mode.

Pairing mode is needed each time you connect to a *new* device. After Qwerkywriter® S is paired to your device, pairing mode is not required to connect again.



6 - The selected Bluetooth slot LED will start blinking when pairing mode is enabled.



7 - On your PC, smartphone or tablet, locate your Bluetooth settings within either Settings/System Preferences

iOS(iPhone/iPad) *Settings > Bluetooth*

MacOS *System Preferences > Bluetooth*

Windows 10 *Start > Settings > Devices > Add Bluetooth or other device*

Android *Settings > Connections > Bluetooth*

8 - Select the Qwerkywriter® S, which will be listed under devices as 'QWERKYWRITER S' or a series of numbers.

9 - Once connected via Bluetooth the corresponding Bluetooth LED will stay on until the Qwerkywriter® S is disconnected, turned off, or goes into sleep mode

[Optional] Repeat with remaining Qwerkywriter® S Bluetooth slots. You can pair one device in each slot. Mix and match supported Bluetooth devices however you prefer.

For example:

Slot 1 - Windows 10 computer

Slot 2 - iPad

Slot 3 - Android Smartphone



Connectivity (cont.)



Bluetooth Device Selection

The Qwerkywriter® S can be paired to 3 devices but can only be **connected** and type on one device at a time. Select the slot of the paired device you want to type on, then press any key to connect.

- + Slot 1
- + Slot 2
- + Slot 3

Once the slot is selected the LED:

Blink 3 times - **stays on** = connected to a device

Blink 3 times - **turns off** = no devices connected to this slot

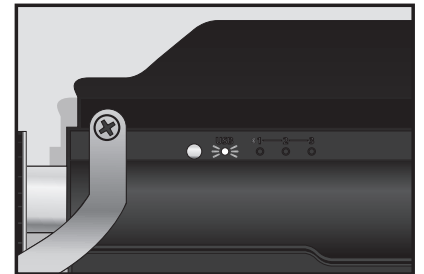
**Bluetooth slots cannot be changed while in USB mode. If in USB mode, use gray button to toggle to Bluetooth mode first. Gray button will toggle between USB mode and Bluetooth mode (last selected Bluetooth slot).*

Connectivity USB



Using USB Mode

The included USB cable simultaneously provides a wired connection and power. Simply plug in the cable and confirm you're in USB mode to instantly connect the Qwerkywriter® S to your computer. Use the gray button to toggle between USB mode and Bluetooth mode.



(Tip: Make sure the USB cable is plugged in all the way! It's a very snug fit so it may need some gentle force. Once in, the red charging light will come on.)

While in USB mode the Qwerkywriter® S does not drain power from the battery. Instead, it recharges the battery as indicated by the red LED. Once the cable has charged the battery to 100% the red LED will turn OFF.

NKEY MODE

(optimal use in USB mode but supported in Bluetooth mode)

NKey mode will give the Qwerkywriter® S a faster response time when keys are typed.

- + NKey mode ON
- + NKey mode OFF

The N labeled LED, located in the upper right, will light up to indicate NKey mode is ON. When NKey mode is ON, the battery will drain faster so charging may be needed more frequently. However, this doesn't apply if the charging cable is plugged in.



Scroll Knobs



Scroll Knob function:



- **Left Knob is set to Volume.**
- **Right Knob controls the vertical window scroll.**

You can swap this function between each knob by pressing FN+W.
Page Scroll supported in Android, MacOS and WIN10 only.

For further detailed instructions, please visit:

<https://www.qwerkywriter.com/pages/new-user-setup-getting-started>

Return Bar



Return Bar function



- **Return Bar is set to the ENTER key by default.**
- **Record up to 16 characters**
- **You can record modifier keys (i.e ctrl+v).**

To record your Macro, Press FN + Return Bar and the USB LED will flash. Record your characters up to 15 characters. Then Press FN+Return Bar again.

In order to restore the Return Bar to Default, simply record the ENTER key to set the Return Bar to its original default state. For further detailed instructions, please visit:

<https://www.qwerkywriter.com/pages/new-user-setup-getting-started>



Key Functions



Multimedia Function for MacOS, WIN10/8/7, iOS, Android:

- + Decrease Volume
- + Increase Volume
- + Previous Track
- + Play/Pause
- + Next Track
- + Home Key (Android only)

Sleep Timer Settings

- + Sets battery sleep timer to 10 Minutes
- + Sets battery sleep timer to 20 Minutes
- + Sets battery sleep timer to 30 Minutes
- + Disables battery sleep (not recommended)

When the above key combinations are pressed, the USB LED will momentarily turn on to indicated timer setting has been changed.

When the Qwerkywriter® S goes into sleep mode, simply press a few keys to wake. The keyboard will turn on and reconnect to the most recently connected device.

*Sleep setting not required in USB mode.

Default Setting for F keys on MacOS and iOS:

- Decrease brightness
- Increase brightness
- Last track
- Play/pause
- Next track
- Mute
- Decrease volume
- Increase volume

Command/WINDOWS/ Key Lock Function

+ key will toggle enable/disable the key.



Warranty



12 Months Limited Warranty

Qwerkytoys, Inc. ("Qwerkytoys") warrants only to the original purchaser of this product, when purchased from Qwerkytoys or an authorized reseller/distributor, that this product will be free from defects in material and workmanship under normal use and service for the length of the warranty period after purchase. Qwerkytoys reserves the right, before having any obligation under this warranty, to inspect the damaged Qwerkytoys product. Initial shipping costs of sending the product to the Qwerkytoys service center in Walnut Creek, California, for inspection shall be borne solely by the purchaser. In order to keep this warranty in effect, the product must not have been mishandled or misused in any way.

This warranty does not cover any damage due to normal wear and tear, defects or damage caused by misuse, accident (including without limitation collision, fire and the spillage of food or liquid), negligence, modification, improper and unauthorized repair, installation, wiring, or testing, improper storage, use in an unapproved device or if the serial number has been removed. Please retain the dated sales receipt as evidence of the original purchaser & date of purchase. You will need it for any warranty service. In order to claim under this warranty, purchaser must make claim to Qwerkytoys and obtain an RMA # which is to be used within 15 days of issuance and must present acceptable proof of original ownership (such as original receipt) for the product. Qwerkytoys, at its option, shall repair or replace the defective unit covered by this warranty. This warranty is non-transferable and does not apply to any purchaser who bought the product from a reseller or distributor not authorized by Qwerkytoys, including but not limited to purchases from internet auction sites. This warranty does not affect any other legal rights you may have by operation of the law.

Warranty Registration

Register your Qwerkywriter® S within 15 days of purchase at:
<https://www.qwerkywriter.com/pages/warranty-registration>

Warranty Service

In the event that warranty repair or replacement is necessary, please provide proof of purchase (order number and/or online receipt) in order to receive warranty service. Within the first 30 days after purchase, please return your product to the reseller (if not from Qwerkytoys.com) for a replacement. If the product is still within warranty and you can no longer return it to your dealer, please contact Customer Support for assistance and instructions. Qwerkytoys will not accept returns without prior approval and an RMA number.

Contact warranty@qwerkytoys.com for warranty service procedures.



Maintenance & Cleaning



For maintenance and cleaning a detailed tutorial is found at:
<https://www.qwerkywriter.com/pages/maintenance>

Set Up & Contact



Set Up

We made setting up easy for you with a video tutorial.

www.qwerkywriter.com/pages/new-user-setup-getting-started



Contact

For our FAQ, please visit

<https://www.qwerkywriter.com/pages/troubleshooting>.

Any questions, please contact support@qwerkytoys.com.

QWERKY TOYS

©2021/2022 Qwerkytoys, Inc.

Designed in California, USA

Made in China

All Rights Reserved and other trademarks contained herein are the property of Qwerkytoys, Inc.

Product may vary slightly from those pictured.

Protected by U.S. Patent No. D773,473 and D775,136.

www.qwerkywriter.com

