

How To Install

Grommet Panels

Dressing Drapery

When drapery panels have been installed and let hang, wrinkles and folds will disappear on their own. A steamer may be used to remove wrinkles.

Need Assistance?

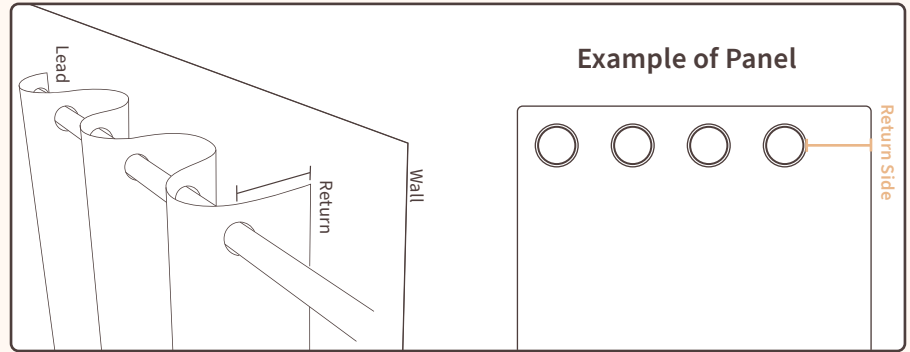
Contact a City Shade Associate for help with Installing.

(877)-224-8974

support@cityshadecompany.com

www.cityshadecompany.com

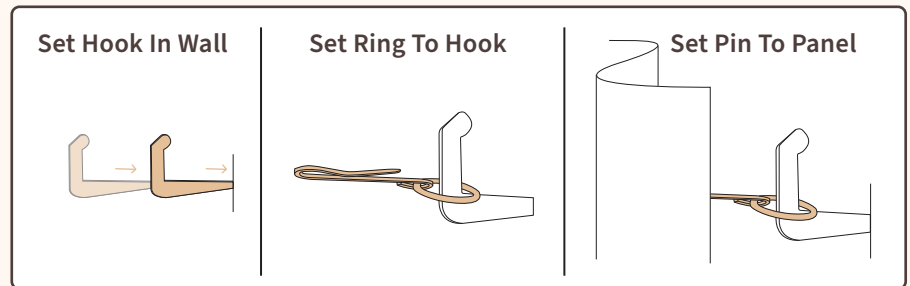
Understanding Grommet Panels



Returns: Returns are the ends of panels that meet the wall. Returns are typically added to prevent light bleeding over.

Lead Edge: A lead edge is the end of a panel that meets the center or opposite end of a window opening.

Installing Returns



Set Hook In Wall: Place the sharp edge of hook in to the wall, if setting hook in to the wall by hand is difficult use a hammer or mallet to gently tap in to place until half of the hook is inserted.

Set Ring To Hook: Insert the pin / ring around the hook.

Set Pin To Panel: Insert the pin in to the return side of the panel. Please note that the pin is not intended to go through the panel.

How To Install

Ripplefold Panels

Dressing Drapery

When drapery panels have been installed and let hang, wrinkles and folds will disappear on their own. A steamer may be used to remove wrinkles.

[Click](#) for installing leads/returns

Need Assistance?

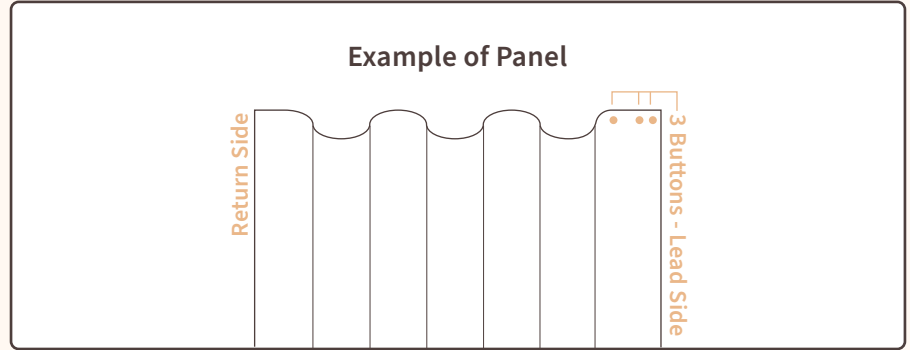
Contact a City Shade Associate for help with Installing.

(877)-224-8974

support@cityshadecompany.com

www.cityshadecompany.com

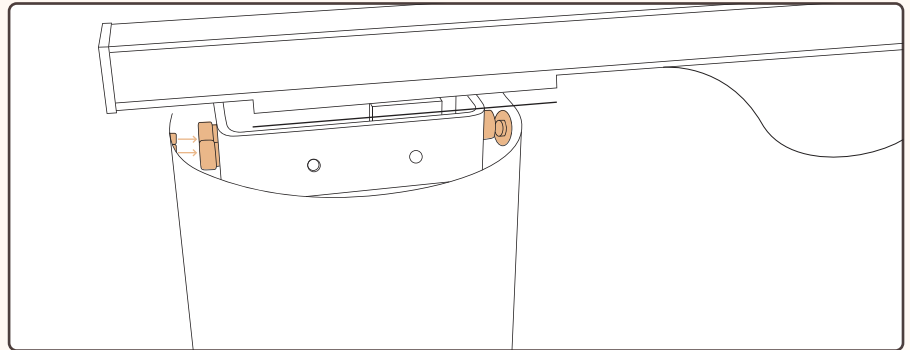
Understanding Ripplefold Panels



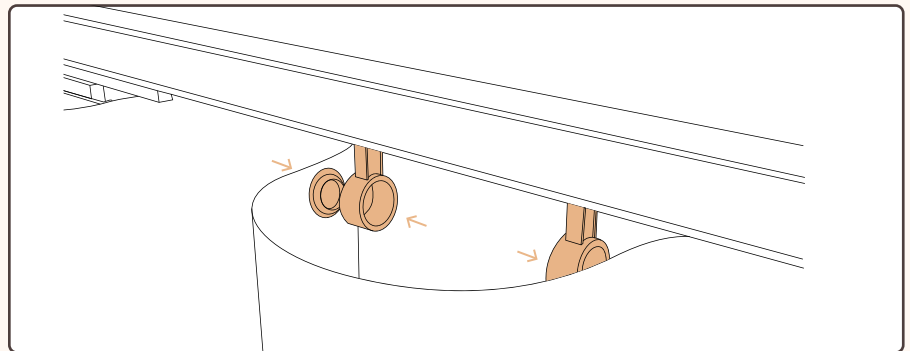
Returns: Returns are the ends of panels that meet the wall. Returns are typically added to prevent light bleeding over.

Lead Edge: A lead edge is the end of a panel that meets the center or opposite end of a window opening. Leads will have three buttons, two for one side of the carrier and a single for opposite side of carrier.

Installing Panels



Installing Lead end to Carrier: On the leading side of the panel snap the two buttons in to the carrier then go over the front facing side of carrier and snap the singular button on the opposite side of carrier creating your first ripple.



Installing ripples: Once the carrier is installed, work your way down to the end of the panel snapping each button in to place. Each ripple will have three buttons on the inside as shown above.

How To Install

Pleated Panels

Dressing Drapery

When drapery panels have been installed and let hang, wrinkles and folds will disappear on their own. A steamer may be used to remove wrinkles.

Need Assistance?

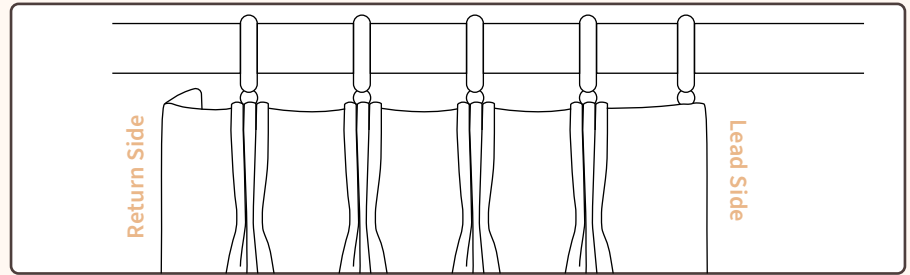
Contact a City Shade Associate for help with Installing.

(877)-224-8974

support@cityshadecompany.com

www.cityshadecompany.com

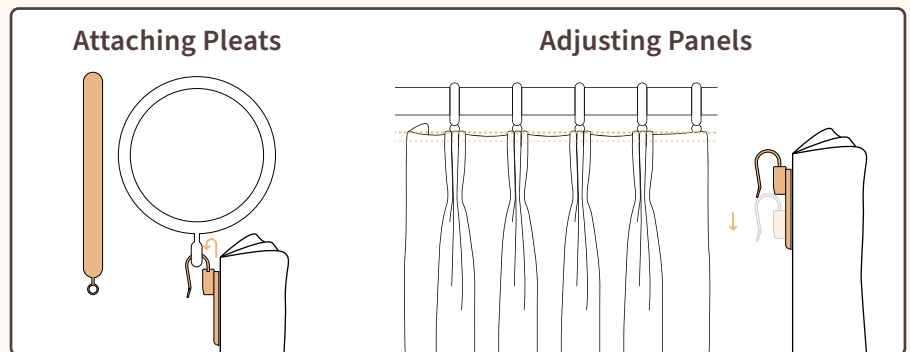
Understanding Pleated Panels



Returns: Returns are the ends of panels that meet the wall. Returns are typically added to prevent light bleeding over.

Lead Edge: A lead edge is the end of a panel that meets the center or opposite end of a window opening. Lead edge will have a shorter end from the end of a pleat than the return.

Installing Pleats to Rings



Attaching Pleats: Hook the pleated panels into the loop at the bottom of the ring using the hooks on the back of the pleats.

Adjusting Panels: The hooks on the back of the pleat can be used to adjust a few things, such as the hardware height, alignment issues, and height off the ground. To make adjustments, hold the hook in place with one hand and lift up the pleat to desired height with other.

Notes: For best practice start with your hook on the highest point of the pleat if not already there, slide the pleat up until the hook slides off the pleat then slide the hook back on top of the pleat. Keep in mind the hook slides onto little latches on the back of the pleat to make micro-adjustments.

How To Install

Pleat Panels

Dressing Drapery

When drapery panels have been installed and let hang, wrinkles and folds will disappear on their own. A steamer may be used to remove wrinkles.

[Click](#) for installing leads/returns

Need Assistance?

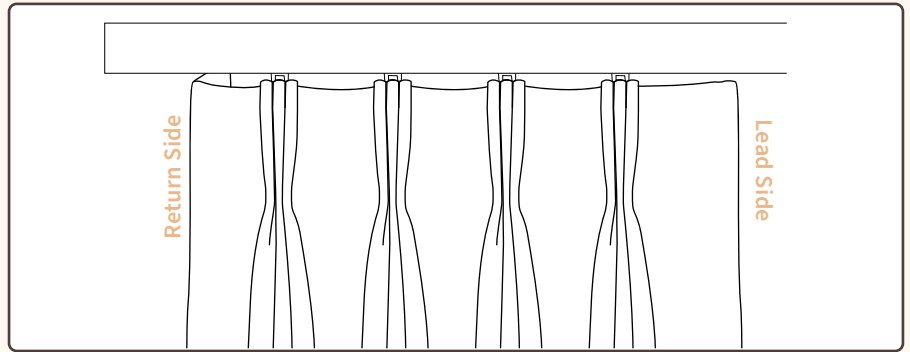
Contact a City Shade Associate for help with Installing.

(877)-224-8974

support@cityshadecompany.com

www.cityshadecompany.com

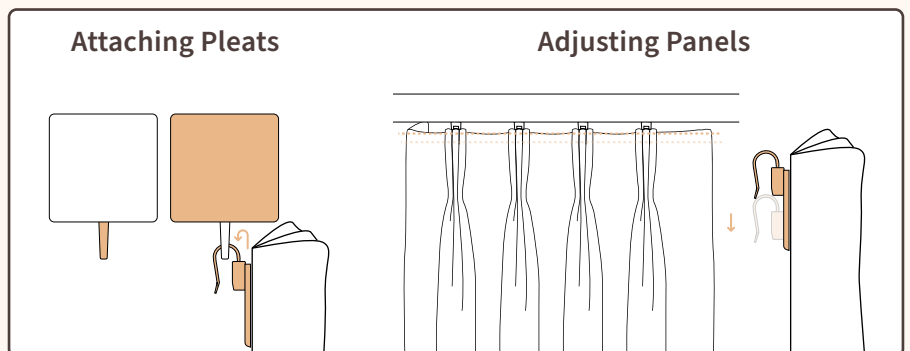
Understanding Panels



Returns: Returns are the ends of panels that meet the wall. Returns are typically added to prevent light bleeding over.

Lead Edge: A lead edge is the end of a panel that meets the center or opposite end of a window opening. Lead edge will have a shorter end from the end of a pleat than the return.

Installing Pleats to Track



Attaching Pleats: Hook the pleated panels into the hole at the bottom of the clip using the hooks on the back of the pleats.

Adjusting Panels: The hooks on the back of the pleat can be used to adjust a few things, such as the hardware height, alignment issues, and height off the ground. To make adjustments, hold the hook in place with one hand and lift up the pleat to desired height with other.

Notes: For best practice start with your hook on the highest point of the pleat if not already there, slide the pleat up until the hook slides off the pleat then slide the hook back on top of the pleat. Keep in mind the hook slides onto little latches on the back of the pleat to make micro-adjustments.

How To Install

Leads and Returns

Dressing Drapery

When drapery panels have been installed and let hang, wrinkles and folds will disappear on their own. A steamer may be used to remove wrinkles.

[Click](#) for installing leads/returns

Need Assistance?

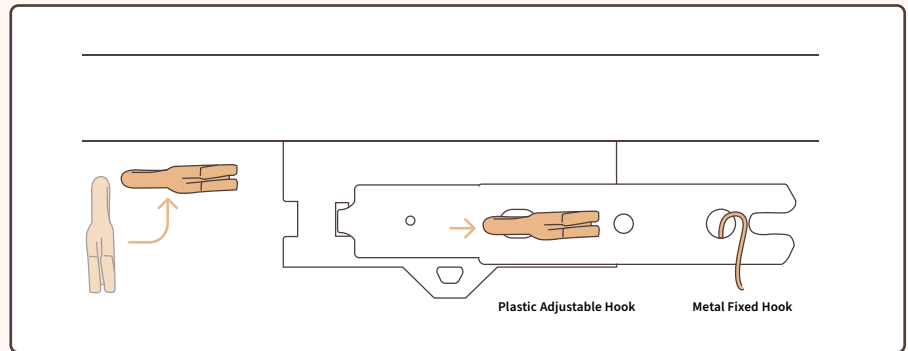
Contact a City Shade Associate for help with Installing.

(877)-224-8974

support@cityshadecompany.com

www.cityshadecompany.com

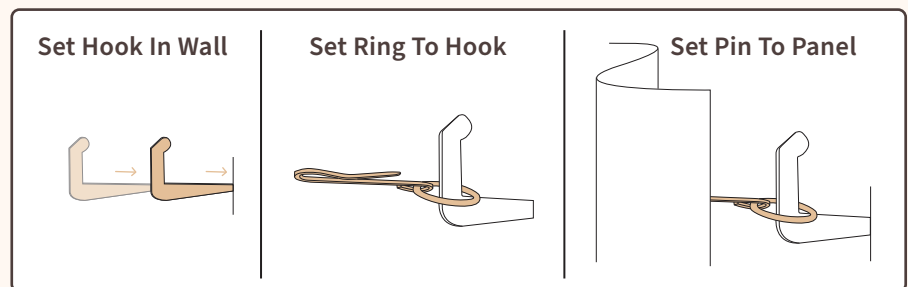
Installing Lead on Pleats - Track



Installing Returns: When installing the lead end of the panel to the track carrier use the two closest pins on the end of the lead end. For easy install take off the plastic adjustable hook from the back of the pleat and turn it 90 degrees before placing hook in to hole. Once half way in, put a little pressure to push and slide hook in to place. Finish install by installing hook back on to back of pleat and finish with installing the metal hook on to last hole of carrier.

Notes: The metal hook will be on the outer most end of panels.

Installing Returns



Set Hook In Wall: Place the sharp edge of hook in to the wall, if setting hook in to the wall by hand is difficult use a hammer or mallet to gently tap in to place until half of the hook is inserted.

Set Ring To Hook: Insert the pin / ring around the hook.

Set Pin To Panel: Insert the pin in to the return side of the panel. Please note that the pin is not intended to go through the panel.