



TECHNICAL DATA SHEET

Kentucky Honey 1500 mg Full Spectrum CBD Oil

Product Description 1.02 fl. oz (28 g) 1500 mg Full Spectrum CBD Oil

Date of Manufacture 05/26/2021

Processing Ethanol Extraction

Solubility Oil Soluble Formulation

Country of Origin United States

Composition

Ingredients: MCT Oil (from Coconut), Ethanol Extracted Full Spectrum Hemp Extract, Natural Terpene Blend.

Product Specifications

Cannabinoid	Weight %	Concentration mg/g
Total CBD	4.824 %	48.2 mg/g
Total THC	0.15 %	1.49 mg/g

Packaging 1.02 fl. oz (28 g) glass bottle with graduated dropper

Storage Conditions Store in a cool dry place, away from light. Do not use if the seal is broken.

Shelf Life The typical shelf life is a minimum 24 months from the date of manufacture in the original unopened container under suggested storage conditions.



Certificate of Analysis

Customer:
Pharm CBD
2580 Highway 42 West
Bedford, KY 40006

Sample ID: **210601020**
Order Number: **CB210601005**
Sample Name: **21091-1**

Collected Date:
Received Date: **6/1/2021**
COA Released: **6/22/2021**

External Sample ID:
Batch Number: **21091**
Product Type: **Other**
Sample Type: **Other**

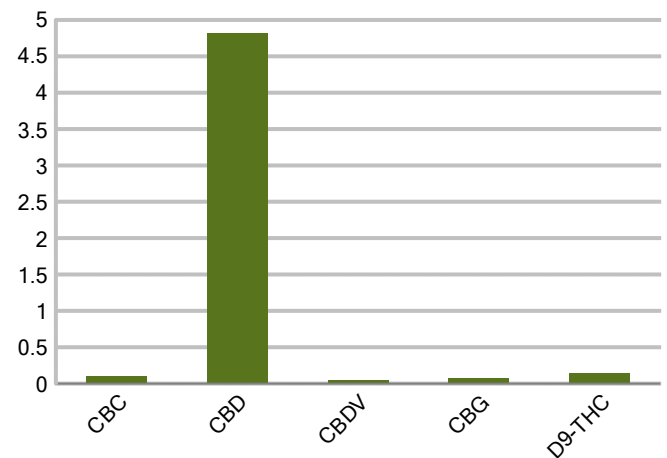
Comments:

CANNABINOID PROFILE

Analyte	LOQ (%)	% weight	mg/g
CBC	0.01	0.103	1.027
CBD	0.01	4.824	48.24
CBDa	0.01	ND	ND
CBDV	0.01	0.043	0.430
CBG	0.01	0.082	0.818
CBGa	0.01	ND	ND
CBN	0.01	ND	ND
d8-THC	0.01	ND	ND
d9-THC	0.01	0.149	1.488
THCa	0.01	ND	ND
Total Cannabinoids		5.200	52.00
Total Potential THC		0.149	1.488
Total Potential CBD		4.824	48.24
Total Potential CBG		0.082	0.818



Cannabinoids (% weight)



Ratio of Total Potential CBD to Total Potential THC 32.38 : 1

Ratio of Total Potential CBG to Total Potential THC 0.55 : 1

*Total Cannabinoids refers to the sum of all cannabinoids detected.

*Total Potential CBD = (0.877 x CBDa) + CBD. *Total Potential THC = (0.877 x THCa) + THC. *Total Potential CBG = (0.877 x CBGa) + CBG.

*Total Potential THC/CBD are calculated to take into account the loss of an acid group during decarboxylation.



PJLA
Testing
Accreditation #109588

Authorized Signature

Laboratory Manager

Jamie Hobgood

06/22/2021 2:30 PM

DATE

This product has been tested by CannaBusiness Laboratories using validated testing methodologies and a quality system. Values reported relate only to the product tested. CannaB Laboratories makes no claims as to the efficacy, safety, or other risks associated with any detected or non-detected levels of any compounds reported herein. This Certificate shall not be reproduced except in full, without the written permission of CannaBusiness Laboratories. Uncertainty information is available on request. Photo is of sample received by the lab and may vary from final packaging. The results apply to the sample as received. ISO/IEC 17025:2017 Accredited.



CannaBusiness Laboratories, LLC

2554 Palumbo Dr. Lexington, KY 40509

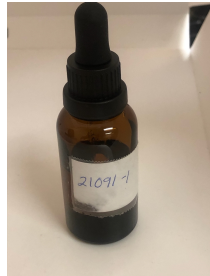


Sample ID: 210601020
Sample Name: 21091-1
Sample Type: Other

Certificate of Analysis

Customer

Pharm CBD
2580 Highway 42 West
Bedford, KY 40006



Overall Batch Results	
Pesticide	Moisture Content
Potency	Water Activity
Mycotoxins	Heavy Metals
Microbial Screen	Residual Solvents
Terpenoids	

Sample Name: 21091-1
Sample ID: 210601020
Product Type: Other
Sample Type: Other
Collected Date:
Received Date: 06/01/2021
Batch Number: 21091
Batch Size:
Sample Size:
COA released: 06/22/2021 2:30 PM

Potency (mg/g)	
Date Tested: 06/02/2021	Method: CB-SOP-028
Instrument:	

0.149 % Total THC	4.824 % Total CBD	5.200 % Total Cannabinoids	52.00 mg/g Total Cannabinoids
----------------------	----------------------	-------------------------------	----------------------------------

Analyte	Result	Units	LOQ	Result	Units
CBC (Cannabichromene)	0.103	%	0.010	1.027	mg/g
CBD (Cannabidiol)	4.824	%	0.010	48.24	mg/g
CBDa (Cannabidiolic Acid)	ND	%	0.010	ND	mg/g
CBDV (Cannabidivarin)	0.043	%	0.010	0.430	mg/g
CBG (Cannabigerol)	0.082	%	0.010	0.818	mg/g
CBGa (Cannabigerolic Acid)	ND	%	0.010	ND	mg/g
CBN (Cannabinol)	ND	%	0.010	ND	mg/g
D8-THC (D8-Tetrahydrocannabinol)	ND	%	0.010	ND	mg/g
D9-THC (D9-Tetrahydrocannabinol)	0.149	%	0.010	1.488	mg/g
THCa (Tetrahydrocannabinolic Acid)	ND	%	0.010	ND	mg/g

Microbial			
Date Tested: 06/22/2021	Method:	Instrument:	

Analyte	Result	Units	LOQ	Result	Analyte	Result	Units	LOQ	Result
STEC (E. coli)	Negative				Salmonella	Negative			
L. monocytogenes	Negative				Yeast/Mold (qPCR)	0	CFUs		

Residual Solvent			
Date Tested: 06/19/2021	Method: CB-SOP-032	Instrument:	

Analyte	Result	Units	LOQ	Result	Analyte	Result	Units	LOQ	Result
1-4 Dioxane	<LOQ	ppm	29		2-Butanol	<LOQ	ppm	175	
2-Ethoxyethanol	<LOQ	ppm	24		2-Methylpentane	<LOQ	ppm	87	
3-Methylpentane	<LOQ	ppm	87		2-Propanol	<LOQ	ppm	350	
Cyclohexane	<LOQ	ppm	146		Ether	<LOQ	ppm	350	
Ethylbenzene	<LOQ	ppm	81		Acetone	<LOQ	ppm	350	
Isopropyl Acetate	<LOQ	ppm	175		Methylbutane	<LOQ	ppm	350	
n-Heptane	<LOQ	ppm	350		n-Hexane	<LOQ	ppm	87	
n-Pentane	<LOQ	ppm	350		Tetrahydrofuran	<LOQ	ppm	54	
Acetonitrile	<LOQ	ppm	123		Ethanol	<LOQ	ppm	350	
Ethyl acetate	<LOQ	ppm	175		o-Xylene	<LOQ	ppm	81	

NT = Not tested, ND = Not detected; LOQ = Limit of Quantitation; <LOQ = Detected; >ULOL = Above upper limit of linearity; CFU/g = Colony forming units per 1 gram; TNTC = Too numerous to count

CannaBusiness Laboratories
License # P-0059: (859)-514- 6999 <https://www.cannabusinesslabs.us>

This product has been tested by CannaBusiness Laboratories using validated testing methodologies and a quality system. Values reported relate only to the product tested. CannaBusiness Laboratories makes no claims as to the efficacy, safety, or other risks associated with any detected or non-detected levels of any compounds reported herein. This Certificate shall not be reproduced except in full, without the written permission of CannaBusiness Laboratories. Uncertainty information is available on request. Photo is of sample received by the lab and may vary from final packaging. The results apply to the sample as received. ISO/IEC 17025:2017 Accredited.



Sample ID: 210601020
Sample Name: 21091-1
Sample Type: Other

Certificate of Analysis

Residual Solvent		
Date Tested: 06/19/2021	Method: CB-SOP-032	Instrument:

Analyte	Result	Units	LOQ	Result	Analyte	Result	Units	LOQ	Result
m+p-Xylene	<LOQ	ppm	163		Methanol	<LOQ	ppm	250	
Methylene Chloride	<LOQ	ppm	90		Toluene	<LOQ	ppm	67	



Authorized Signature

Jamie Hobgood

06/22/2021 2:31 PM

Laboratory Manager

Date Time

NT = Not tested, ND = Not detected; LOQ = Limit of Quantitation; <LOQ = Detected; >ULOL = Above upper limit of linearity; CFU/g = Colony forming units per 1 gram; TNTC = Too numerous to count

CannaBusiness Laboratories
License # P-0059: (859)-514- 6999 <https://www.cannabusinesslabs.us>

This product has been tested by CannaBusiness Laboratories using validated testing methodologies and a quality system. Values reported relate only to the product tested. CannaBusiness Laboratories makes no claims as to the efficacy, safety, or other risks associated with any detected or non-detected levels of any compounds reported herein. This Certificate shall not be reproduced except in full, without the written permission of CannaBusiness Laboratories. Uncertainty information is available on request. Photo is of sample received by the lab and may vary from final packaging. The results apply to the sample as received. ISO/IEC 17025:2017 Accredited.