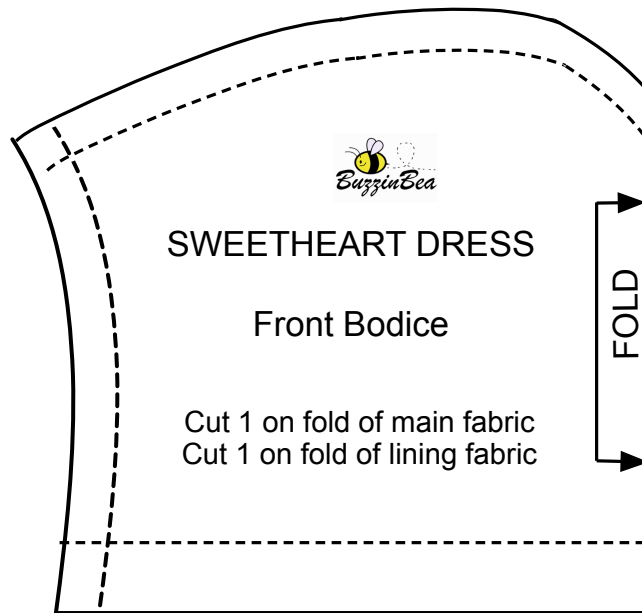
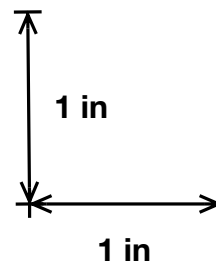


Sweetheart Dress for 18 inch Dolls



Cut 5.25 x 28 inches of main fabric for the skirt part of the dress.
Note: You can also make the width of the fabric 24-26 inches wide instead of 28".



Please link to our website, www.buzzinbea.com if you intend to use this for online purposes
This pattern specifically fits American Girl Dolls.