

## EtherNet/IP-INSpektor®

### Function

The **EtherNet/IP-INSpektor®** is a passive data collector that analyses telegram traffic in EtherNet/IP and Ethernet networks in terms of events like

- Telegram gaps,
- Netload,
- Update time,
- Telegram jitter,
- Telegram repetitions,
- Error frames,
- Device diagnoses and
- Device failures

This information reflects the current condition of the communication quality in the network concerned and provides the basis for a condition based maintenance. By storing data in the device, events in the network can be traced and evaluated directly via the display or in detail via the integrated web server.

It is recommended to install the EtherNet/IP-INSpektor® permanently in the network connection between controller and first IO device or switch, since the majority of communication merges typically in this connection.

### Technical data

- Power supply: +24V DC
- Tolerance: 10%
- Max. power consumption: 350mA
- Max. power loss: 8,5W

### General data

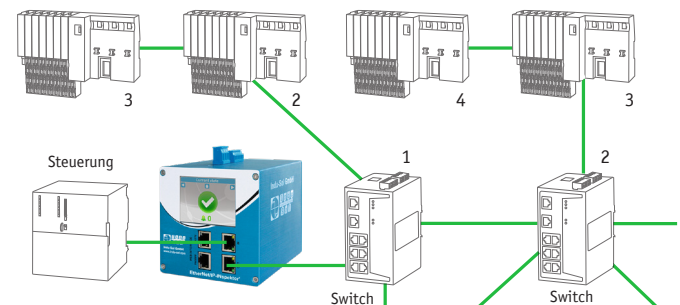
- Mounting: TS35 DIN rail (EN 50022)
- Dimensions (H x W x D): 123 x 105 x 129 mm incl. top-hat rail mounting and connector terminals
- Weight: 0,84 kg
- Protection class: IP20
- Operating temperature: +5 °C to +55 °C
- Storage temperature: -15 °C to +75 °C
- Air humidity: 10% to 90%, non-condensing
- Network port: EtherNet/IP: 2 x 10/100Base-T RJ45-Ports  
Web interface: 2 x 10/100/1000Base-T RJ45-Ports
- UL certification number: E501379

### Scope of delivery StarterKIT

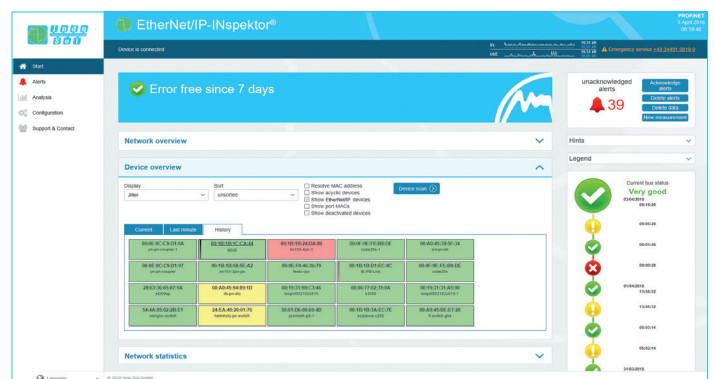
- EtherNet/IP-INSpektor®
- PROmanage® NT (24 ports)
- Power pack
- Patch cable
- Case and manual



EtherNet/IP-INSpektor®



EtherNet/IP-INSpektor® „Its position in network“



Web interface

Ordering details	Art. No.
EtherNet/IP-INSpektor® with UL certification	124090000
EtherNet/IP-INSpektor®	124090002
EtherNet/IP-INSpektor® StarterKIT	124090120