



SOLAR ENERGY

0~+3 W

POSITIVE TOLERANCE

Positive tolerance of up to 3W delivers higher output reliability.

545W

POWER OUTPUT

Monocrystalline Module

4mm² cable 55cm

OUTPUT CABLES

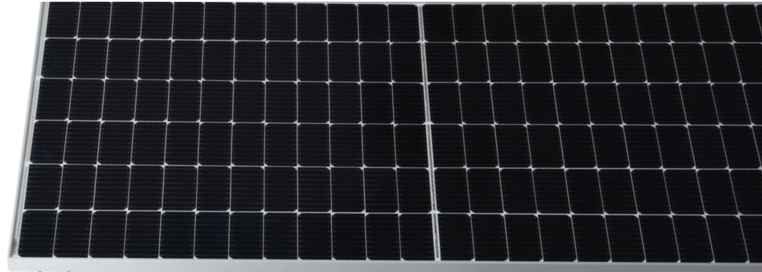
Inlcuding MC4 connector

21.08%

MODULE EFFICIENCY

half-cell designs improves the module's performance and durability.

Mono Half Solar Panel



10 YEAR

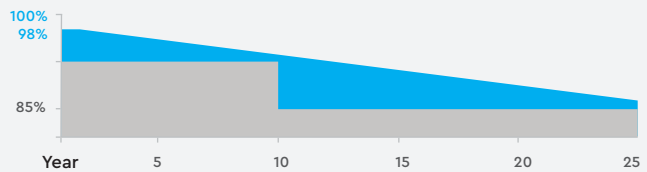
WARRANTY

PRODUCT MATERIAL AND WORKMANSHIP

25 YEAR

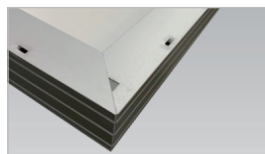
WARRANTY

LINEAR POWER OUTPUT



JUNCTION BOX

WATERPROOF PROTECTION GRADE:IP67/IP68
SAFETY LEVEL: CLASS II
MAXIMUM SYSTEM VOLTAGE: 1500V
OUTSTANDING WATERPROOF LEVEL,
EFFECTIVELY RESIST HARSH ENVIRONMENTS



FRAME

STRONG MACHINICAL LOAD
RESISTANCE UP TO 5400PA
ANODIC OXIDATION LAYER RESISTANT TO
CHEMICAL CORROSION AVAILABLE
IN SILVER AND BLACK



HALF-CUT TECHNOLOGY

New Circuit Design, Lower Internal Current And Lower Internal Resistance Loss



SIGNIFICANTLY AVOIDING HEAT SPOT

The unique circuit design to reduce the temperature Of heat spot significantly,so that to reduce the power loss And then increase the output of modules.



LOWER COST

Increasing power generation can reduce the cost per kilowatt-hour



EXCELLENT PERFORMANCE OF PID RESISTANCE

The performance of PID resistance(Potential Induced Degradation) passed the standard of TUV Nord.

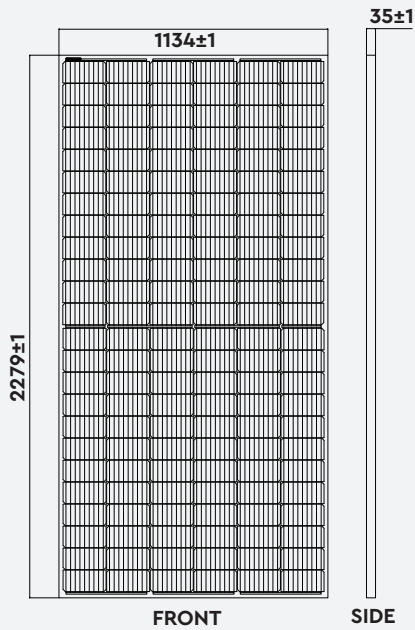


SOLD IN OVER
70 COUNTRIES

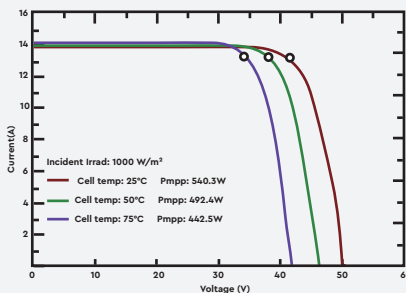
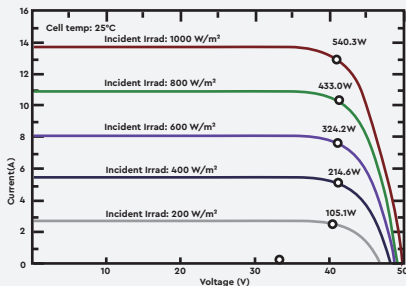
www.vtacexports.com

ONE BRAND, ENDLESS SOLUTIONS.

DRAWING AND DIMENSION CURVE



IV CURVE



LISTING DETAILS

Modle No: VT-545W
 SKU Code: 11354
 EAN Code: 3800157682220

MASTER BOX PACKAGING

Qty Per Pallet: 31pcs/pallet

ELECTRICAL DATA (STC)

Peak Power(Pmax)	545.00
Maximum Power Voltage(Vmp)	41.93
Maximum Power Current(Impp)	13.00
Open Circuit Voltage(Voc)	49.90±3%
Short Circuit Current(Isc)	13.92±3%
Module Efficiency(%)	21.08

ELECTRICAL DATA (NOCT)

Peak Power(Pmax)	405.1
Maximum Power Voltage(Vmp)	38.93
Maximum Power Current(Impp)	10.41
Open Circuit Voltage(Voc)	46.73±3%
Short Circuit Current(Isc)	11.13±3%

TEMPERATURE & MAXIMUM RATING

Maximum System Voltage V)	1500 V
Maximum Series Fuse Rating A)	25 A
Power Tolerance	0~+3 W
Pmax Temperature Coefficient (W/°C)	-0.350 %/°C
Voc Temperature Coefficient (V/°C)	-0.285 %/°C
Isc Temperature Coefficient (A/°C)	+0.045 %/°C
NOCT Nominal Operating Cell Temperature (°C)	45±2°C
Operating and Storage Temperature (°C)	-40~+85°C

MECHANICAL CHARACTERISTICS

Cell Type	182*91 Mono
No. of Cells	144 (12*12)
Dimensions	2279*1134*35mm
Weight	28.40kg
Front Glass	3.2mm high transmission, low iron, tempered glass
Frame	Anodized Aluminium Alloy
Junction box	IP67/IP68 3diodes
Output cables	4mm ² cable 55cm (Including MC4 connector)
MaxWind Load/Snow Load	2400Pa/5400Pa