

STELLAR™ LED GATE

Instruction Manual

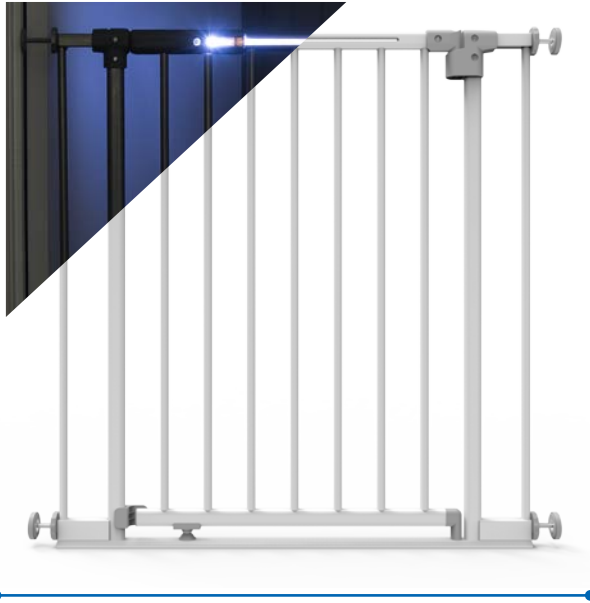
INSTALLATION VIDEO



Proud
Supporter



#2744



30"
(76cm)
Tall

28.8" - 32.3" Wide
(73cm - 82cm)

**IMPORTANT! READ AND
FOLLOW THESE INSTRUCTIONS
CAREFULLY AND KEEP FOR
FUTURE REFERENCE.**

This product complies with safety standard ASTM F1004-19.

TABLE OF CONTENTS

SAFETY INFORMATION	
General	03
Maintenance	03
Warnings	04
WHAT'S IN THE BOX	
Parts	06
INSTALLATION	
Gate Placement	07
Inside Opening or Doorway	08
OPERATION	
How to Open	12
Cleaning Instructions	12
Motion Sensors - Warnings	13
SUPPORT	
Warranty Certificate	14
Warranty Card	15
After Sales Support	15

SAFETY INFORMATION

GENERAL

Read this instruction manual carefully and keep it in a safe place for future reference. The correct use and maintenance of this product is essential.

MAINTENANCE

Regularly check that the gate is functioning correctly, lubricate hinges and moving components with a suitable spray lubricant. Tighten and adjust mounts to ensure secure smooth operation. Inspect all components regularly and stop using if any component is damaged or missing.

WARNINGS

- WARNING** To prevent serious injury or death, securely install gate or enclosure and use according to manufacturer's instructions.
- WARNING** Danger to older children if climbing over the product.
- WARNING** Do not use the safety barrier if any components are damaged, missing or disassembled.
- WARNING** Never install this product on glass doors. Install this product against reliable doors or walls.
- WARNING** If the safety barrier is used at the top of the stairs, it should not be positioned below the top level.
- WARNING** If the safety barrier is used at the bottom of the stairs, it should be positioned at the front of the lowest tread possible.
- WARNING** Never use to keep child away from pool.
- WARNING** You must install [wall cups] to keep gate in place. Without [wall cups], child can push out of gate and escape.
- WARNING** This safety barrier must not be fitted across windows.
- WARNING** This safety barrier is for domestic use only.
- WARNING** Never leave the child unattended when using this product.

WARNINGS

- WARNING** Always check that the safety barrier is correctly closed.
- WARNING** This safety barrier has an automatic closing system.
- WARNING** This safety barrier has a 'stay open' feature.
- WARNING** Use only with the locking/latching mechanism securely engaged.
- WARNING** Never use with a child able to climb over or dislodge/open the gate or enclosure.
- WARNING** Regularly check that the safety barrier is properly installed and secure.
- WARNING** Any additional or replacement parts should be obtained from after sales support.
- WARNING** Barrier must be fitted between rigid surfaces such as plaster board, timber or hard wall.
- WARNING** This product is intended for use with children from 6 to 24 months or small to medium pets from 4.5kg (10lbs) up to 18kg (40lbs).
- WARNING** Do not put any goods which can be grabbed by children or pets near this product to prevent injury.
- WARNING** Before using this product, carefully inspect for any loose parts and whether any parts need to be tightened.

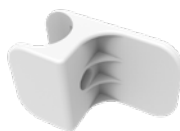
PARTS



1 x
Safety Gate



4 x
Screws



1 x
Swing Direction Control



4 x
Adjuster Bolts



4 x
Adhesive Pads



4 x
Adjuster Screws



4 x
Mounting Cups

STEP 1: GATE PLACEMENT

Gate must be installed in a structurally sound opening. Ensure mounting surface (wall, door frame, stair etc.) is strong, rigid and has an even surface. Measure the space to be enclosed, you may need to use extensions.

Extensions are available through www.permachildsafety.com

Note: Only use one extension on each side of gate.

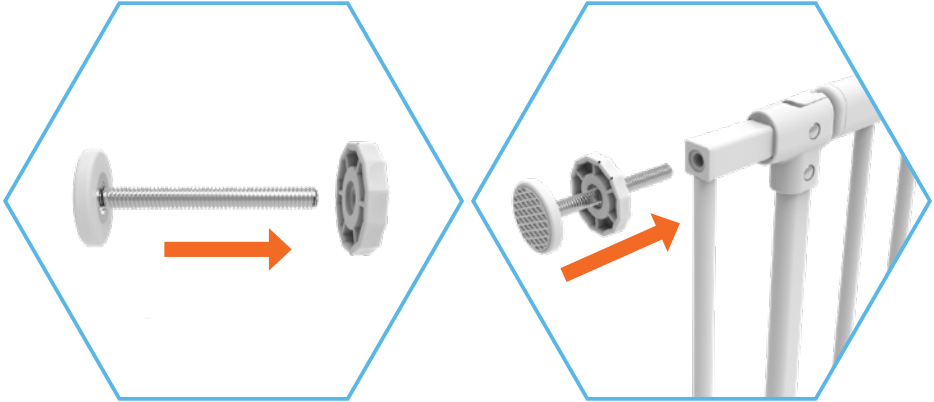


When you unpack the gate you may notice a gap at the door opening, this is normal with pressure mounted gates and the gap will disappear when it is installed correctly.

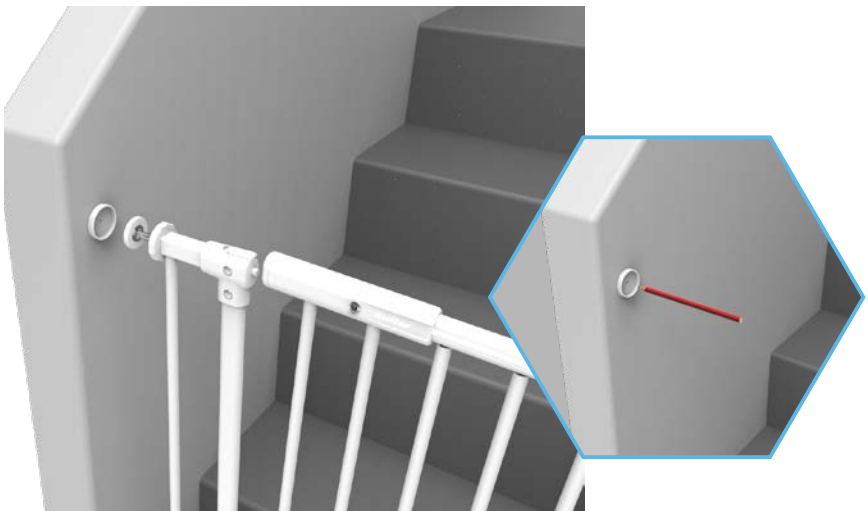


STEP 2: INSIDE OPENING OR DOORWAY

1. Screw Adjuster Bolts and Screws together then place into mounting holes in each corner of gate.

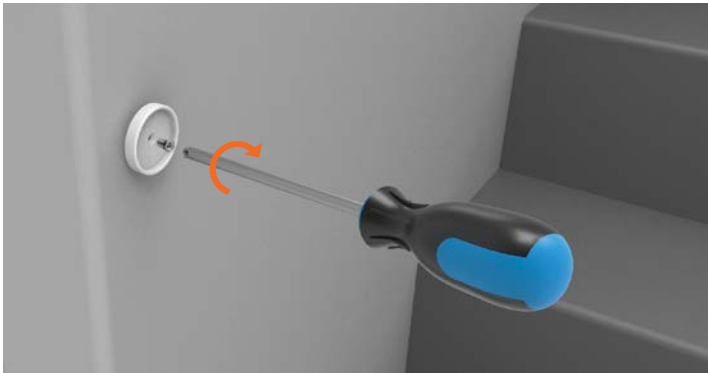
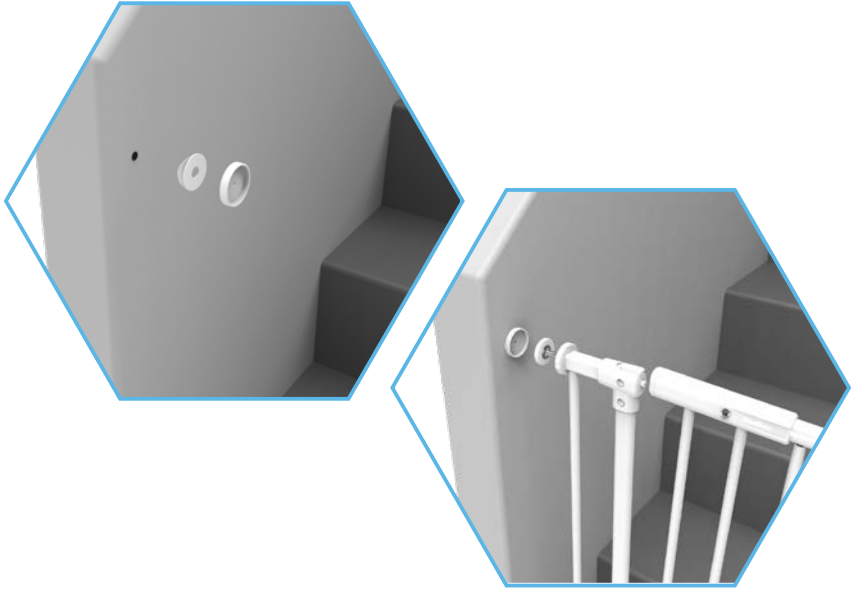


2. Place the gate in opening, ensure the bottom rail is completely flat on the floor and the Mounting Cups are directly above each other. Mark the position of each Mounting Cup.



3. Stick the Mounting Cup in position with the Adhesive Pads and then place gate into position.

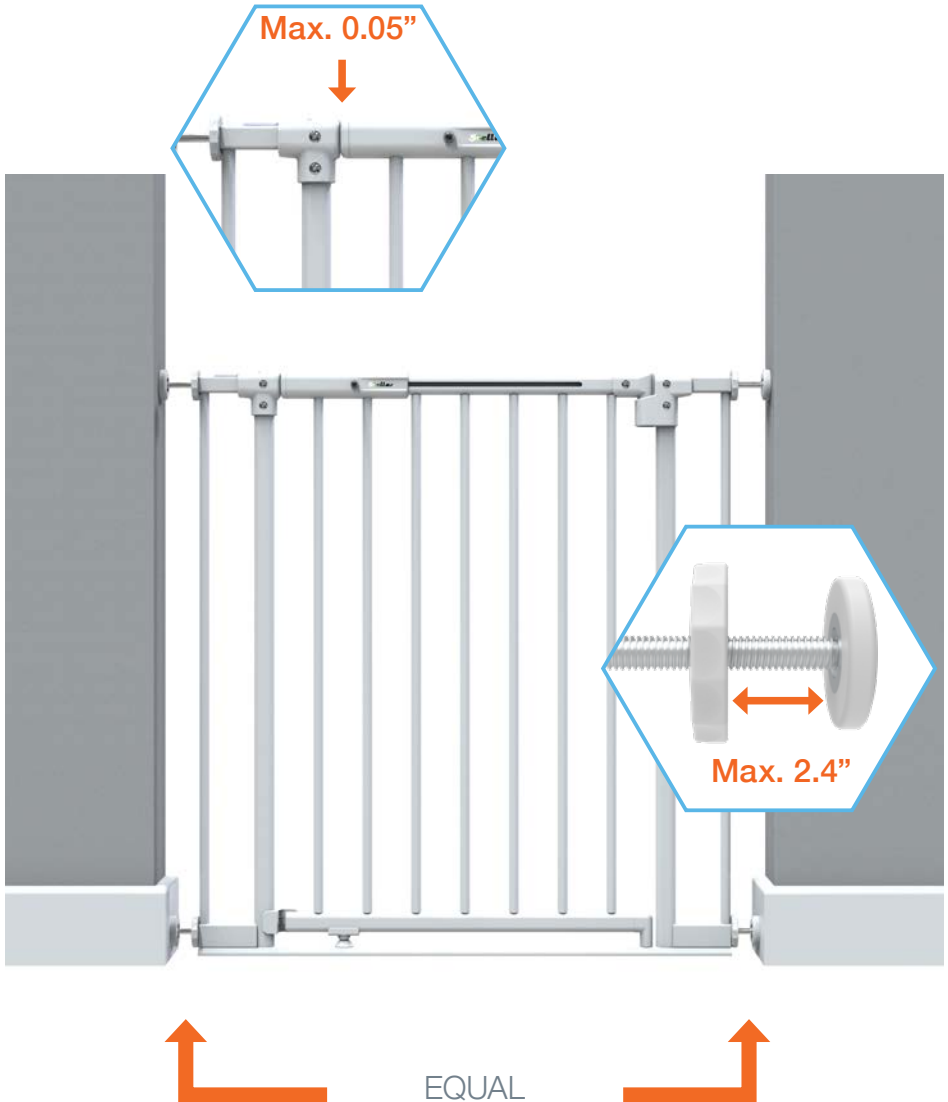
For added security fix each cup to the wall using a small Phillips head screwdriver and the Screws provided.



This gate must only be fixed to a solid and secure surface. If unsure, check with a qualified builder or trades person that the installation you intend is suitable and safe within the chosen location.

- Align gate with Mounting Cups and tighten Adjuster Screws by turning clockwise, start with the bottom Adjuster Screws, then do the top. Tighten equally until there is only a 0.05" gap in the locking mechanism. Regularly check tension of all mounting bolts and adjust if required.

Note: Do not extend Adjuster Bolt further than 2.4".

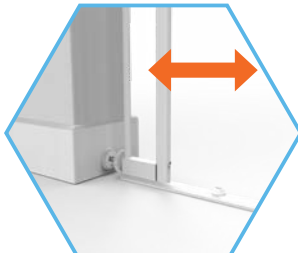


5. Determine which direction the gate should open. Screw in Swing Direction Control piece opposite to the desired opening direction. Use images below as a guide.

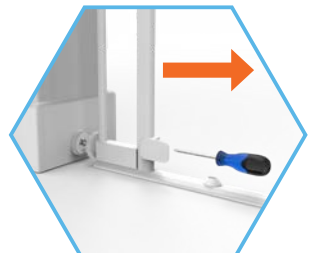
Note: For the top of stairways, gate should never open out over stairs.



LEFT SIDE
OPENING



BOTH SIDE
OPENING



RIGHT SIDE
OPENING

HOW TO OPEN

1. Using one hand place thumb on the button and grip gate with fingers. Slide button and lift gate, then open gate in either direction, when released gate will swing closed automatically.

Always check gate is properly closed.



CLEANING INSTRUCTIONS

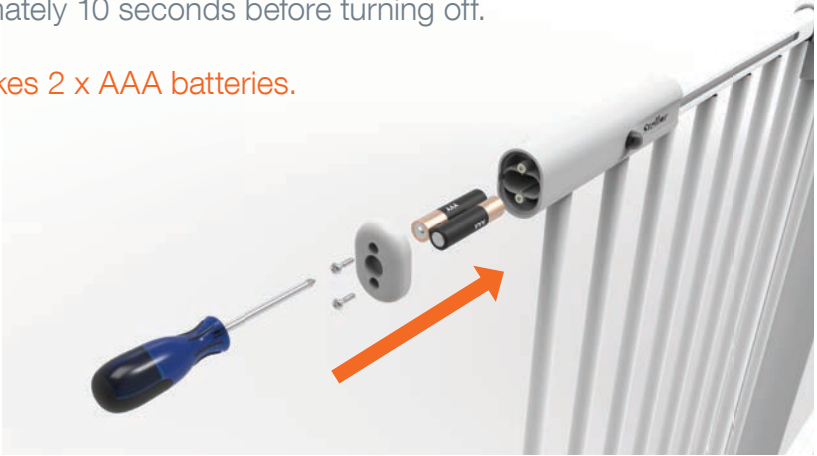
Simply use a soft damp cloth to wipe gate, dry after cleaning. Do not use chemical or abrasive cleaners.



MOTION SENSORS

The Stellar™ LED Gate has motion sensors on both sides. When motion is detected the light will turn on for approximately 10 seconds before turning off.

Note: Takes 2 x AAA batteries.



WARNINGS

- WARNING** Do not mix old and new batteries.
- WARNING** Do not mix alkaline, standard (carbon-zinc) or rechargeable (nickel-cadmium, lithium-ion) batteries.
- WARNING** Remove batteries during long periods of non-use. Always remove depleted batteries from product.
- WARNING** Use caution when opening battery compartment as some batteries may leak.
- WARNING** Keep batteries out of reach of children. Swallowing may lead to serious injury or death. If swallowed, go straight to hospital emergency room.
- WARNING** Dispose of used batteries immediately.
- WARNING** Always ensure battery compartment is securely screwed in place.

WARRANTY CERTIFICATE

Congratulations! You have made an excellent choice of this quality product. Our commitment to quality also includes our service. Should you, contrary to expectations, experience defects due to manufacturing faults, we will provide you with a warranty against defects as follows:

Warranty

The product is guaranteed to be free from defects in workmanship and parts for a period of 12 months from the date of purchase. Defects that occur within this warranty period, under normal use and care, will be repaired, replaced or refunded at our discretion. You are entitled to a replacement or refund for a major failure and for compensation for any other reasonably foreseeable loss or damage. You are also entitled to have the goods repaired or replaced if the goods fail to be of acceptable quality and the failure does not amount to a major failure.

Proof of Purchase

This warranty is valid for the original purchase and is not transferable. Please keep your purchase docket, tax invoice or receipt as the best proof of purchase, and as proof of date on which the purchase was made.

Extent of Warranty

This warranty is limited to defects in workmanship or parts. All defective products or parts will be repaired or replaced. This warranty does not cover consumable items.

Normal Wear and Tear

This warranty does not cover normal wear and tear to the products or parts.

Exclusions

This warranty does not cover:

- Any defects caused by an accident, misuse, abuse, improper installation or operation, lack of reasonable care, unauthorised modification, loss of parts, tampering or attempted repair by a person not authorised by the distributor.
- Any product that has not been installed, operated or maintained in accordance with the manufacturer's operating instructions provided with the product.
- Any product that has been used for purposes other than domestic use.

To Make a Claim

If a defect in the goods appears within 12 months, you are entitled to claim a warranty. Please contact after sales support via the link below:

www.permachildsafety.com/contact-us

Please ensure that you have a copy of proof of purchase so that we are able to respond as quickly and efficiently as possible.

WARRANTY CARD

Details:

Product Name: Stellar LED Safety Gate

Product Number: White 2744

Your Name:

Address:

Phone:

Email:

Date of Purchase:

Location of Purchase:

We recommend that you keep a copy of your receipt, showing the date of purchase, with this warranty certificate and keep for your reference. In the event of a product fault, please contact after sales support. Ensure that you include the product details (as shown on this card) so that we are able to respond as quickly and efficiently as possible.

AFTER SALES SUPPORT

Product Code: White 2744



For questions, concerns and to view our latest products visit:
www.permachildsafety.com/contact-us



©2020 Permastik Pty Ltd.
All Rights Reserved.
Distributed by Perma Products USA®
www.permaproducts.com
Tel: 239 494 5481
Made in China to Perma quality standards

Perma™ 
Child Safety
next generation safety



CARDBOARD BOX
PLEASE RECYCLE