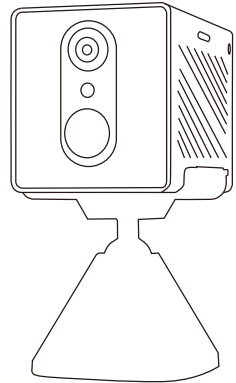


Wireless Security Camera Quick Start Guide

Model: CB70W
App: O-KAM Pro

English

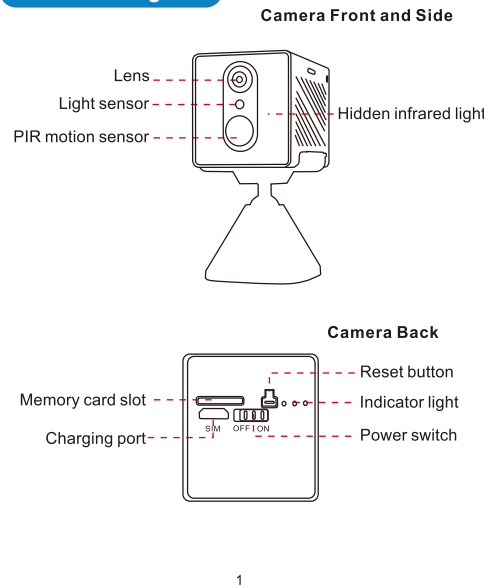


+1 888-966-6962
okam@javiscam.com

This Quick Guide helps you set up the camera. For detailed instructions, scan the QR code for the full PDF manual.

www.javiscam.com/pages/okam-cb70w

Product Diagram



1

Before Installation

1. This camera is designed exclusively for use with strong and stable 2.4GHz and 5GHz private Wi-Fi networks. It is **NOT** compatible with any 4G LTE networks. We do not recommend using the camera without a Wi-Fi connection. If you need to operate the camera without any network, please scan the QR code on the first page after the cover to access the detailed user manual and FAQs. You're also welcome to email us or message us directly through the O-KAM Pro app (tap the icon in the top right corner).
2. During the setup process, please keep your phone and your camera close to each other.
3. The camera includes free 3-day loop cloud storage, allowing motion detection recordings to be stored for up to 3 days from the time they are captured. **This free plan is limited to standard resolution video resolution and a maximum of 100 videos saved per day.** For extended storage duration and higher video quality, you can subscribe to a paid cloud storage plan.
4. The camera operates in motion detection mode by default. It stays in sleep mode when there is no activity and will wake up within 2 seconds to record video when motion is detected.
5. More frequent motion detection and live view checks will consume more battery power. Battery life can vary significantly based on how the camera is positioned.
6. The PIR motion detection range is about 5 meters (16 feet). Ensure the camera faces an open area; otherwise, the motion detection function may not work effectively. It **CANNOT** detect motion through windows, walls, doors, or roofs.

2

7. Support micro SD card up to 256GB. To protect both the memory card and the camera, insert or remove the memory card only when the camera is powered **OFF**.

Note: Depending on your order, a micro SD card may or may not be included.

Indicator Light

Indicator light (before setup)	
Blue light flashing slowly	Ready for a new Wi-Fi setup
Blue light flashing fast	Connecting
Blue light solid on	Connected
Indicator light (before setup)	
Blue light solid on	Recording motion detection
Indicator light (reset)	
Green light and Blue light flash alternately	Resetting camera
Blue light flashing slowly	Ready for a new Wi-Fi setup
Indicator light (charging)	
Yellow light on	Charging

Setup

1. Charge the Camera

Please charge the camera for 3 hours using the provided cable and a **5V adapter** before setup. Typically, your phone's charging adapter should work fine.

3

2. Download the APP

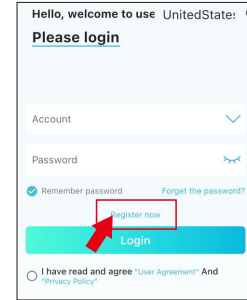
Search 'O-KAM Pro' in the App Store (iOS) or Google Play (Android). Or scan the QR code below to download the app.



The camera does NOT support RTSP, ONVIF, or any other software on computers.

3. Register an Account

Click 'Register Now' to create your O-KAM account using your preferred email address. Please check your email inbox and spam mailbox for the verification code.

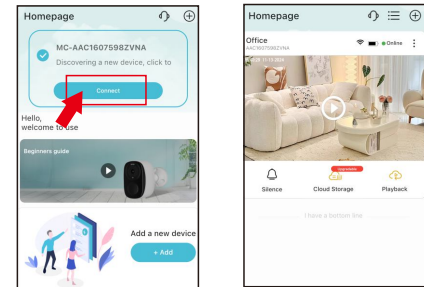


4. Add the device to your account

- ① Find the power switch on the back of the camera. Turn it on, and the indicator light on the back of the camera will flash blue slowly.

4

- ② On the homepage, the app will automatically detect your camera via Bluetooth and prompt you to set up a new connection. If no pop-up appears, tap the '+ Add' button and scan the QR code sticker on the camera. Then, follow the instructions in the app to complete the setup.



- ③ The system will finish the configuration in a minute.
- ④ Set a name for the camera and check the Wi-Fi strength. Only recommend to use the camera where Wi-Fi is **Strong**.
- ⑤ You're all set! Click the ellipsis on the top right to adjust camera settings. To watch the live stream, simply click the preview image.

Setup Troubleshooting:

If no pop-up appears during setup, please try restarting the camera using the power switch. After restarting, press and hold the reset button for at least 3 seconds. Wait for a minute, and the indicator light on the back of the camera will begin flashing slowly in blue. The app should then detect the camera as a new device for setup. If Wi-Fi setup fails, double-check that you've entered the correct Wi-Fi name and password. Even a missing space can cause the connection to fail. Always reset the camera if Wi-Fi setup fails, and then try again.

5

+1 888-966-6962
www.javiscam.com
okam@javiscam.com



User guide videos on YouTube



Promotions & events on Facebook

Manufacturer: Shenzhen VStarcam Technology Co., Ltd
Address: VStarcam Industrial Park, No. 57 Shilongzai, Shuitian Community, Shiyao Town, Bao'an District, Shenzhen City, Guangdong Province, China

FCC ID: 2AP2H-HDCAMERA Made in China

6

If you have any questions or issues with the camera, scan the QR code on the first page after the cover to access the detailed user manual and FAQs. You're also welcome to email us or message us directly through the O-KAM Pro app (tap the icon in the top right corner).

Camera Mount Installation

To install the camera, ensure the surface is smooth, flat, and clean. The mount consists of two parts: a tray and a base, connected by a 360-degree ball structure. The 3M tape is fixed on the base of the mount, which allows for easy attachment to a variety of surfaces.

Avoid mounting the camera on textured or uneven surfaces such as brick, stucco, or rough wood, as the tape may not adhere well. Also, do not use silicone, rubber, or certain plastics, as these materials may prevent the tape from sticking securely.

For the best results, make sure the mounting area is free of dust, dirt, oil, or grease. This will ensure the tape holds the mount firmly in place, giving your camera a stable and secure installation.

If you prefer to mount the camera using screws, please email us or message us directly through the O-KAM Pro app for assistance.

Working Modes

Path to access Working Mode settings: Ellipsis button on the homepage → Camera's Settings Page → 'Working Mode'.

Power Saving Mode: This is the camera's default working mode. The camera will enter sleep status to conserve power when no activity is detected. Motion detection or accessing the camera in the app will wake it from sleep.

Smart Sleep Mode: When the battery is above 40%, the camera records continuously to the micro SD card. Below 40%, it switches to Power Saving Mode and returns to Smart Sleep Mode once recharged.

Super Power Saving Mode: This mode shares the same features as the standard power-saving mode. However, the camera will NOT wake up for app access, and the live view function will be disabled.

Video Storage

Path to access cloud storage and card storage: Homepage → 'Playback' in the bottom right corner of the block.

	Cloud Storage	Card Storage	Photo / Gallery app
Power Saving Mode	Motion detection recordings	Motion detection recordings	Live view manual recordings
Smart Sleep Mode	Motion detection recordings	Continuous recordings	Live view manual recordings
Super Power Saving Mode	Motion detection recordings	Motion detection recordings	Live view not available

7

- ① **Cloud Storage:** Enjoy the free cloud storage plan, which saves each motion-detected video in the cloud for 3 days from the time it's recorded. Be sure to download any important videos before they expire. **The free plan offers standard-definition resolution and up to 100 videos saved per day.** For extended storage duration and higher video quality, you can subscribe to a paid cloud storage plan.

- ② **Card Storage:** Supports micro SD cards up to 256GB. If using the card in the camera for the first time, please format it through the app. To protect both the memory card and the camera, insert or remove the memory card only when the camera is powered OFF. *Note: Depending on your order, a micro SD card may or may not be included.*

- ③ **Photos / Gallery:** Recordings you manually capture using the 'Record' button in the live view interface will be saved directly to your phone's default media app. For example, on iPhones, you can find them in the app 'Photos', while on Samsung phones, they will be in the app 'Gallery'. Those recordings can also be found in 'Album' on 'Mine' page of O-KAM Pro.

8

Application Instructions

- ④ **Homepage:** The default page of the O-KAM Pro app, where all your set-up devices are listed either in a list or in blocks.
- ⑤ **Live-View Page:** Tap the device preview image on the homepage to access the live-view page, where you can monitor the camera's live feed remotely.
- ⑥ **Settings Page:** Tap the ellipsis button on the homepage or the gear icon on the live-view page to access the settings page. Here, you can manage various camera settings, including night vision mode, switching to a new Wi-Fi network, working mode, motion detection options, and more.
- ⑦ **Message Page:** Access via the 'Message' tab at the bottom center to access this page. Here, you can view or download motion detection recordings from all cameras, organized by date.
- ⑧ **Mine Page:** Access via the 'Mine' tab at the bottom center. View recordings, manage your account, adjust settings, check app permissions, and access the user agreement and support.

For detailed instructions on using the app, including settings, please scan the QR code on the first page after the cover. You're also welcome to email us or message us directly through the O-KAM Pro app (tap the icon in the top right corner).

9

Safety & Use Guidelines

Indoor Use Only: This camera is designed for indoor use only and is neither waterproof nor dust-resistant. For optimal performance, avoid placing the camera in areas with high humidity, extreme temperatures, or direct exposure to water or dust. To ensure the camera's longevity, mount it in a dry, temperature-controlled environment, away from direct sunlight, heat sources, or areas with excessive dust.

Handling the Camera: Do not drop the camera or subject it to physical shocks. Always handle it gently when mounting, dismounting or adjusting.

Battery Safety: Do not attempt to remove, replace, or modify the built-in battery. Dispose of used batteries in accordance with local regulations, and avoid short-circuiting them to prevent damage or injury.

Installation Guidelines: When mounting the camera, check for any obstructions or dangers. Install only in areas where the camera can securely function without risk of interference.

Electrical and Power Safety: Ensure all wiring is secure and cables are not exposed to extreme conditions. Avoid using unauthorized power adapters or chargers.

Cleaning the Camera: Use a dry, soft cloth to clean the lens and camera body. Do not use harsh cleaning agents, as these may damage the camera's exterior or lens.

Disposal: Dispose of the battery in accordance with local regulations and guidelines for electronic waste.

10