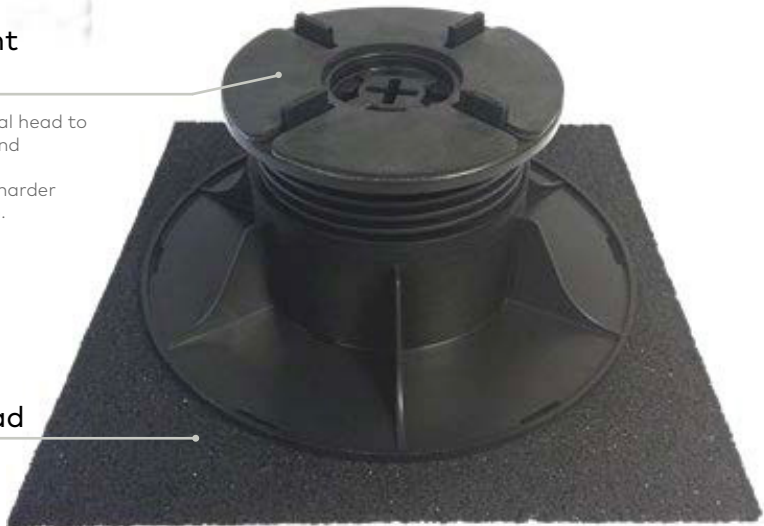


OVAEDA Support Shock Absorbent Gaskets are a simple but highly effective way to further enhance paving applications supported with OVAEDA paving pedestals

### Head Shock-Absorbent Gaskets

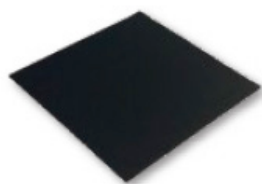
Placed/fixed directly to the pedestal head to enhance shock absorption and sound reduction. Particularly effective for lighter or harder paving materials, such as porcelain.



### Base Rubber Shock Pad

Installed under pedestal base, to enhance acoustic properties or to provide additional protection to membrane.

### THE RANGE



3mm rubber shock pad for pedestal base



1mm self-adhesive rubber levelling shockpad for [RPA](#)/[RPF](#) Pedestals

### TECHNICAL SPECIFICATION

	Head Rubber Shock Pads	Base Rubber Shock Pad	
Material	EPDM (ethylene propylene diene monomer) rubber	High grade SBR (styrene-butadiene) rubber granulate bonded with polyurethane	
Temperature stability	Max -30°C	Max -40°C	
Diameter/ dimensions	HRSP for Levelling	230 x 230mm	
	HRSP for RPF		118mm
	HRSP for RPA		116mm
	HRSP for RP-FR (for use with plastic spacer)		90mm
	HRP for RP-FR (for use with metal spacer)		170x 170mm