

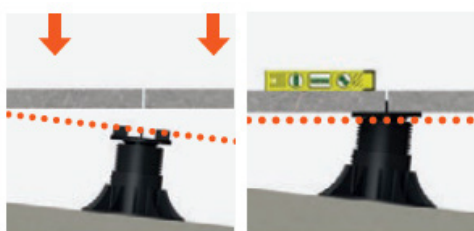
Self-levelling adjustable pedestal supports all types of calibrated paving.

Spacer Tabs

- Provide consistent spacing between slabs
- Snap-off design allows for easy removal as required.

Self-Levelling Paving Support Head

'Ball and socket' floating head design allows slope correction of up to 10.5% (6°). No levelling shims are required - see below.



Adjustable Threaded Section

Easily allows millimetre perfect adjustments within given range.

Height Extension Collar

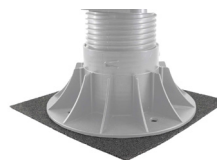
- Easy to attach with a single 'click' motion
- Builds up pedestal height in 100mm increments

Wide Supporting Base

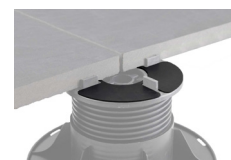
- Evenly spreads load, protecting membranes
- Water drainage holes prevent moisture build-up
- Holes enable pedestals to be fixed to surface if required



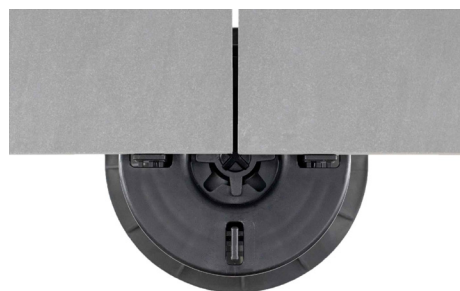
Accessories



3mm rubber shock pad for pedestal base



2mm moulded rubber shockpad for pedestal



TECHNICAL SPECIFICATION

Material	PP Polypropylene (recyclable), UV resistant		
Biological/chemical	Resistant to moulds, algae, alkali, bitumen		
Height range	40-56mm	200-300mm	700-800mm
	50-70mm	300-400mm	800-900mm
	70-100mm	400-500mm	900-1000mm
	110-160mm	500-600mm	
	150-210mm	600-700mm	
Compression	2100kg (certified compression data available on request)		
Base Diameter	210mm / 220mm		
Head Diameter	130mm		
Spacer tab thickness	2mm / 4mm (standard) / 6mm / 8mm / 10mm		
Working Temperature	-40°C to 120°C		