

The fixed head adjustable decking pedestal is designed to support all conventional decking and paving systems.

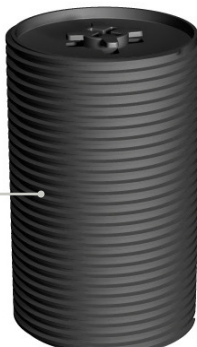
Support Head

- Support decking joist
- Joists of up to 80mm can be used and are fixed through a heavy duty locator bracket.



Threaded Column

- Allows millimetre perfect adjustment within given range
- High loading capability



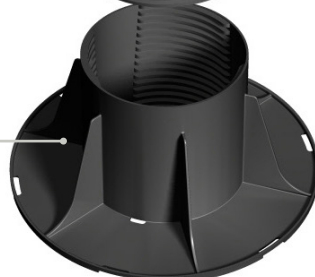
Adjustable Threaded Section

- Adds 126mm of height
- Enables incremental height build-up as required.



Wide Supporting Base

- Evenly spreads load, protecting membranes
- Water drainage holes prevent moisture build-up
- Holes enable pedestals to be fixed to surface if required



TECHNICAL SPECIFICATION

Material	PP Polypropylene (recyclable), UV resistant		
Biological/chemical	Resistant to moulds, algae, alkali, bitumen		
Height range	22-35mm 35-55mm 55-95mm 95-165mm 165-235mm	200-270mm 260-340mm 305-375mm 365-445mm 410-480mm	470-550mm
Compression	1000kg		
Base Diameter	200mm		
Head Diameter	120mm		
Bearer Capacity	Up to 80mm		
Working Temperature	-30°C to 120°C		