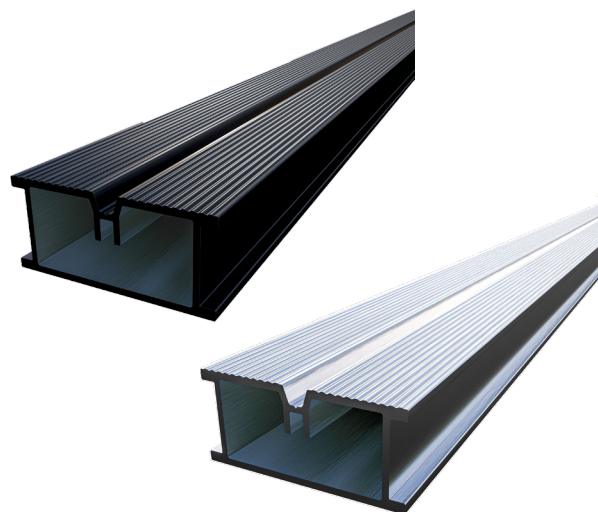
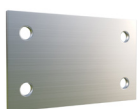


The Tectonic® Aluminium Decking Subframe Joist (22mm height) has been designed to support all conventional decking systems, especially where height is restricted.

- Lowest self-supporting joist on the market
- Supports decking boards as low as 25mm, and as high as 1022mm
- Simple design - rapid installation
- Compatible with Tectonic® pedestals and cradles
- Supports any type of conventional decking boards - softwood, hardwood, composite, PVC
- Powdercoating and anodising options available
- Supplied in 3.6m lengths as standard, bespoke and pre-cut lengths available to special order.



Additional Components



Straight Joist Connector



90° Angle Joist Connector



135° Angle Joist Connector



30mm Screws for Aluminium Joists (200/pack)



19mm Screw for Starter/End Clips (200/pack)



13mm Aluminium Subframe Screw (200/pack)

Subframe Pedestals



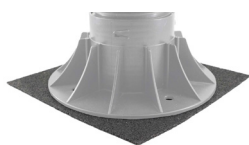
Fixed Head Pedestal for Aluminium/Timber Joist



Self-Levelling Pedestal for Aluminium Joist



Joist Cradle



230mm x 230mm Rubber Support Pad

TECHNICAL SPECIFICATION

Material	Aluminium alloy 6063
Joist dimensions	Width: 48mm, Height: 22mm, Length: 3600mm
Temper	T6
Finish	Mill Finish or Powder Coated to RAL 9005 (black)
Support height	25 - 1022MM (when using in conjunction with Tectonic® pedestals/cradles)
Fire rating	"Non-Combustable", achieved a Class 1 surface spread of flame to BS476: Part 5
Allowable load (uniformly distributed)	> 4.0kN/m ² (further data available on request)
Allowable load (concentrated)	1.4 kN (further data available on request)
Allowable joist span between support points	400mm
Joist screw spec	DS-SSJS 4.2 X 13mm stainless steel A2, square drive pan-head, self drilling
Decking screw spec	DS-SSDS-19 3.9 X 19mm stainless steel A2, square drive countersunk head, self-drilling
	DS-SSDS-38 3.9 x 30mm stainless steel A4, chemi-black finish, square drive countersunk head, self-drilling

