

Note: Some designs in this collection may have been created using unique special stitches and/or techniques. To preserve design integrity when rescaling or rotating designs in your software, always rescale or rotate designs using the handles directly on-screen.



OC07001 Dove Appliqué
4.69 X 6.78 in.
119.13 X 172.21 mm
7,867 St. **L**



OC07002 Cardinal Appliqué
4.45 X 4.85 in.
113.03 X 123.19 mm
5,392 St.



OC07003 Chickadee Appliqué
4.86 X 4.85 in.
123.44 X 123.19 mm
10,064 St.



OC07004 Reindeer Appliqué
4.32 X 4.88 in.
109.73 X 123.95 mm
4,720 St.



OC07005 Sleigh Appliqué
4.85 X 4.62 in.
123.19 X 117.35 mm
6,548 St.



OC07006 Pinecones Appliqué
4.84 X 4.59 in.
122.94 X 116.59 mm
11,906 St.



OC07007 Christmas Tree Appliqué
3.88 X 4.92 in.
98.55 X 124.97 mm
4,084 St.



OC07008 Snowflake Appliqué
4.20 X 4.85 in.
106.68 X 123.19 mm
10,218 St.



OC07009 Ornaments Appliqué
4.06 X 7.79 in.
103.12 X 197.87 mm
15,023 St. **L**



OC07010 Yule Appliqué
4.18 X 3.19 in.
106.17 X 81.03 mm
3,993 St.



OC07011 Noel Appliqué
2.27 X 6.96 in.
57.66 X 176.78 mm
5,556 St. **L**



OC07012 Christmas Appliqué
3.05 X 5.40 in.
77.47 X 137.16 mm
6,554 St. **L**

⌘ Design contains a loose fill.
⚙ Some white areas shown are not stitched.

L Design is larger than 5" (127 mm) in either direction.
S Design is smaller than 1.5" (38.1 mm) in either direction.

Note: Some designs in this collection may have been created using unique special stitches and/or techniques. To preserve design integrity when rescaling or rotating designs in your software, always rescale or rotate designs using the handles directly on-screen.





OC07013 Snowflake Corner
 3.66 X 3.67 in.
 92.96 X 93.22 mm
 6,213 St.



OC07014 Snowflake Border
 1.95 X 5.95 in.
 49.53 X 151.13 mm
 6,742 St. **L**



OC07015 Snowflakes Jumbo Appliqué
 5.13 X 8.45 in.
 130.30 X 214.63 mm
 19,957 St. **L**

 Design contains a loose fill.
 Some white areas shown are not stitched.

L Design is larger than 5" (127 mm) in either direction.
S Design is smaller than 1.5" (38.1 mm) in either direction.



SILHOUETTE QUILTS

PACK 61070 • 15 DESIGNS

Listings below indicate color sample, stitching order and suggested thread color number in Isacord, YLI Fine Metallic, Yenmet or YLI Variegated threads.

OC07001 Dove Appliqué

- 1. Black Detail0020
- 2. Appliqué Placement Stitch.....0020
- 3. Appliqué Tackdown.....0020
- 4. White Detail0670

OC07002 Cardinal Appliqué

- 1. Appliqué Placement Stitch.....0020
- 2. Appliqué Tackdown.....0020
- 3. White Detail0670
- 4. Black Detail0020

OC07003 Chickadee Appliqué

- 1. Black Detail0020
- 2. Appliqué Placement Stitch.....0020
- 3. Appliqué Tackdown.....0020
- 4. White Detail0670

OC07004 Reindeer Appliqué

- 1. Black Detail0020
- 2. Appliqué Placement Stitch.....0020
- 3. Appliqué Tackdown.....0020
- 4. White Detail0670

OC07005 Sleigh Appliqué

- 1. Black Detail0020
- 2. Appliqué Placement Stitch.....0020
- 3. Appliqué Tackdown.....0020
- 4. White Detail0670

OC07006 Pinecones Appliqué

- 1. Black Detail0020
- 2. Appliqué Placement Stitch.....0020
- 3. Appliqué Tackdown.....0020
- 4. White Detail0670

OC07007 Christmas Tree Appliqué

- 1. Black Detail0020
- 2. Appliqué Placement Stitch.....0020
- 3. Appliqué Tackdown.....0020
- 4. White Detail0670

OC07008 Snowflake Appliqué

- 1. Black Detail0020
- 2. Appliqué Placement Stitch.....0020
- 3. Appliqué Tackdown.....0020
- 4. White Detail0670

OC07009 Ornaments Appliqué

- 1. Black Detail0020
- 2. Appliqué Placement Stitches.....0020
- 3. Appliqué Tackdowns.....0020
- 4. White Detail0670

OC07010 Yule Appliqué

- 1. Black Detail0020
- 2. Appliqué Placement Stitch.....0020
- 3. Appliqué Tackdown.....0020
- 4. White Detail0670

OC07011 Noel Appliqué

- 1. Black Detail0020
- 2. Appliqué Placement Stitch.....0020
- 3. Appliqué Tackdown.....0020
- 4. White Detail0670

OC07012 Christmas Appliqué

- 1. Black Detail0020
- 2. Appliqué Placement Stitch.....0020
- 3. Appliqué Tackdown.....0020
- 4. White Detail0670

OC07013 Snowflake Corner

- 1. Single Color Design.....0020

OC07014 Snowflake Border

- 1. Single Color Design.....0020

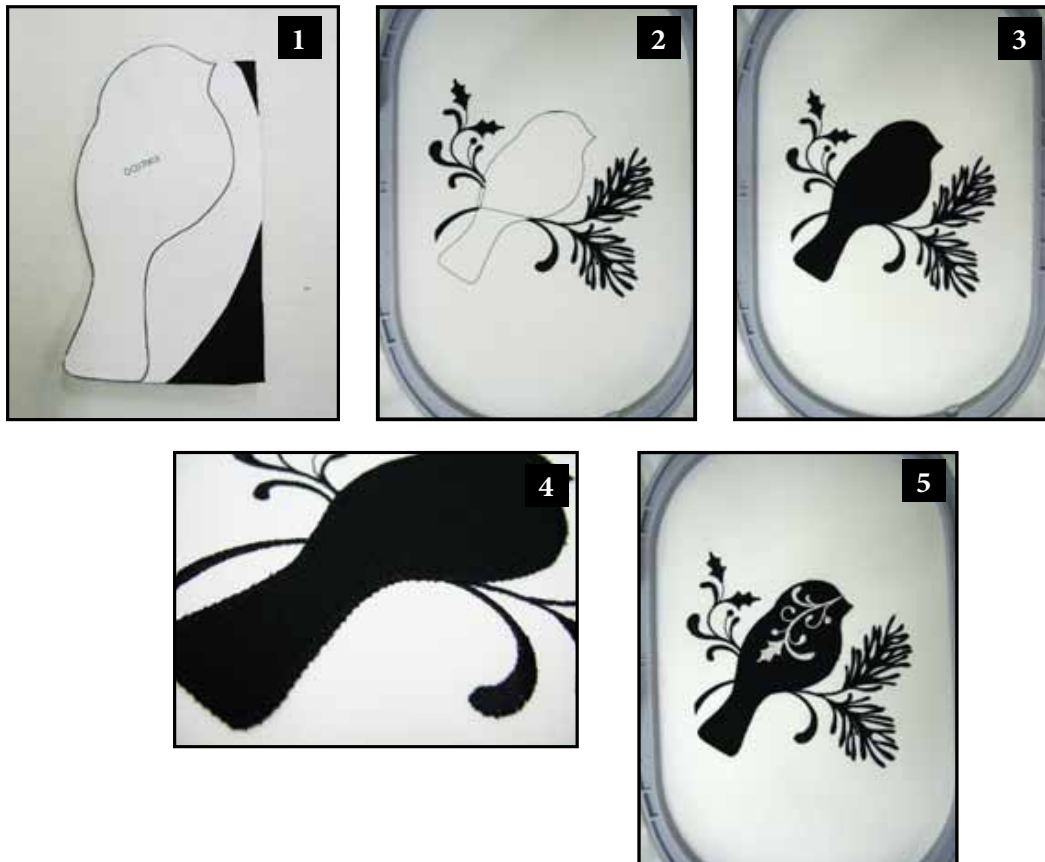
OC07015 Snowflakes Jumbo Appliqué

- 1. Black Detail0020
- 2. Appliqué Placement Stitches.....0020
- 3. Appliqué Tackdowns.....0020
- 4. White Detail0670

1. Print out the necessary pages from the PDF of the appliqué pattern(s).
2. Mark the right side of the pattern pieces so you'll know which direction to lay the pattern on the fabric.
3. Lightly spray the wrong side of the pattern pieces with temporary adhesive spray and allow it to set for a few minutes.
4. Place the pattern pieces on the right side of the fabric and carefully cut them out. **PHOTO 1**
5. Sew the placement stitch on you hooped fabric. **PHOTO 2**
6. With the paper still stuck to the right side of the appliqué fabric, spray the wrong side of the fabric with temporary spray adhesive.
7. Place the fabric inside the sewing placement stitch so that it matches the stitching line then remove the paper pattern. **PHOTO 3**
8. Sew the tackdown. **PHOTO 4**
9. Sew the remainder of the design and repeat for any remaining pieces. **PHOTO 5**

NOTE: The patterns are sized for the designs as they were made. If you resize the design, you will need to resize the pattern the same amount. You can print out the pattern at the normal size then copy it on a copy machine at the changed size, i.e. resize the designs to 80%, resize the printed pattern to 80%.

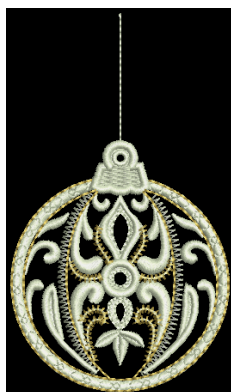
TIP: When Printing the patterns, make sure that the "Fit to page" option is UNCHECKED in the Print Dialog Box. If this option is checked the printed patterns will not be actual size.



Note: Some designs in this collection may have been created using unique special stitches and/or techniques. To preserve design integrity when rescaling or rotating designs in your software, always rescale or rotate designs using the handles directly on-screen.



OC07201 Pointed Ornament
2.84 X 5.09 in.
72.14 X 129.29 mm
8,359 St. **L**



OC07202 Globe Ornament
2.56 X 4.46 in.
65.02 X 113.28 mm
10,531 St.



OC07203 Finial Ornament
2.03 X 5.01 in.
51.56 X 127.25 mm
6,668 St. **L**



OC07204 Candy Cane
2.31 X 4.06 in.
58.67 X 103.12 mm
6,472 St.



OC07205 Drum
2.33 X 3.23 in.
59.18 X 82.04 mm
6,380 St.



OC07206 Trumpet
3.04 X 5.84 in.
77.22 X 148.34 mm
12,669 St. **L**



OC07207 Bells
4.17 X 5.45 in.
105.92 X 138.43 mm
17,849 St. **L**



OC07208 Sleigh
4.28 X 3.95 in.
108.71 X 100.33 mm
16,824 St.



OC07209 Reindeer
4.56 X 6.77 in.
115.82 X 171.96 mm
17,698 St. **L**



OC07210 Rocking Horse
5.73 X 4.76 in.
145.54 X 120.90 mm
18,772 St. **L**



OC07211 Partridge in a Pear Tree
4.84 X 6.43 in.
122.94 X 163.32 mm
25,085 St. **L**



OC07212 Pine Branch
3.13 X 5.20 in.
79.50 X 132.08 mm
3,046 St. **L**

⌘ Design contains a loose fill.
⚙ Some white areas shown are not stitched.

L Design is larger than 5" (127 mm) in either direction.
S Design is smaller than 1.5" (38.1 mm) in either direction.

Note: Some designs in this collection may have been created using unique special stitches and/or techniques. To preserve design integrity when rescaling or rotating designs in your software, always rescale or rotate designs using the handles directly on-screen.





OC07213 Floral Spray Border
 2.56 X 7.03 in.
 65.02 X 178.56 mm
 9,712 St. **L**



OC07214 Pinecones
 4.83 X 5.90 in.
 122.68 X 149.86 mm
 11,008 St. **L**



OC07215 Jumbo Floral Spray
 4.82 X 11.19 in.
 122.43 X 284.23 mm
 22,615 St. **L**

 Design contains a loose fill.
 Some white areas shown are not stitched.

L Design is larger than 5" (127 mm) in either direction.
S Design is smaller than 1.5" (38.1 mm) in either direction.

Listings below indicate color sample, stitching order and suggested thread color number in Isacord, YLI Fine Metallic, Yenmet or YLI Variegated threads.

OC07201 Pointed Ornament

- 1. Off White on Design.....0670
- 2. Gold Details.....7012
- 3. Off White on Design.....0670

OC07202 Globe Ornament

- 1. Off White on Design.....0670
- 2. Gold Details.....7012

OC07203 Finial Ornament

- 1. Gold Detail.....7012
- 2. Off White on Design.....0670
- 3. Gold Detail.....7012

OC07204 Candy Cane

- 1. Gold Detail.....7012
- 2. Off White on Design.....0670
- 3. Gold Detail.....7012

OC07205 Drum

- 1. Off White on Design.....0670
- 2. Gold Detail.....7012
- 3. Off White on Design.....0670

OC07206 Trumpet

- 1. Off White on Design.....0670
- 2. Gold Detail.....7012
- 3. Off White on Design.....0670

OC07207 Bells

- 1. Gold Detail.....7012
- 2. Off White on Design.....0670
- 3. Gold Detail.....7012

OC07208 Sleigh

- 1. Gold Detail.....7012
- 2. Off White on Design.....0670
- 3. Gold Detail.....7012

OC07209 Reindeer

- 1. Gold Detail.....7012
- 2. Off White on Design.....0670
- 3. Gold Detail.....7012
- 4. Off White on Design.....0670

OC07210 Rocking Horse

- 1. Gold Detail.....7012
- 2. Off White on Design.....0670
- 3. Gold Detail.....7012

OC07211 Partridge in a Pear Tree

- 1. Gold Detail.....7012
- 2. Off White on Design.....0670
- 3. Gold Detail.....7012
- 4. Off White Outline on Bottom Pear.....0670

OC07212 Pine Branch

- 1. Off White on Design.....0670
- 2. Gold Detail.....7012

OC07213 Floral Spray Border

- 1. Off White on Design.....0670
- 2. Gold Detail.....7012

OC07214 Pinecones

- 1. Gold Detail.....7012
- 2. Off White on Design.....0670
- 3. Gold Detail.....7012

OC07215 Jumbo Floral Spray

- 1. Gold Detail.....7012
- 2. Off White on Design.....0670
- 3. Gold Detail.....7012

NOTE: Thread color 7012 (a.k.a. S4) is Yenmet 14kt Gold.

TRY THESE FUN ALTERNATE COLORWAYS!



OC07211 Partridge in a Pear Tree

- 1. Gold Detail.....7012
- 2. Off White on Design.....0670
- 3. Gold Detail.....7012
- 4. Off White Outline on Bottom Pear.....0670



OC07211 Partridge in a Pear Tree

- 1. Green Detail.....5912
- 2. Off White on Design.....0670
- 3. Green Detail.....5912
- 4. Off White Outline on Bottom Pear.....0670



OC07211 Partridge in a Pear Tree

- 1. Red Detail.....2333
- 2. Off White on Design.....0670
- 3. Red Detail.....2333
- 4. Off White Outline on Bottom Pear.....0670