

# WINTER VISITORS BY DONA GELSINGER



1

Design

# THREAD LIST



## Isacord Thread Colors

0015 White	0873 Stone	1902 Poinsettia
0020 Black	0934 Fawn	2022 Rio Red
0124 Fieldstone	1140 Meringue	2115 Beet Red
0128 Navajo	1321 Dark Orange	5326 Evergreen
0131 Smoke	1322 Dirty Penny	5552 Palm Leaf
0184 Pearl (2 Spools)	1352 Salmon	5633 Lime
0345 Moss	1521 Flamingo	5643 Green Dust
0520 Daffodil	1725 Terra Cotta	5912 Erin Green
0576 Very Dark Brown	1755 Hyacinth	
0763 Dark Rattan	1874 Pewter	

**\* Project instructions included after design list.**

**Note: One spool of 1000 meter thread is adequate for the project unless otherwise noted.**

## TABLE OF CONTENTS

### Interactive menu

Click to navigate to section.

Designs.....	3
Collection Supplies.....	19
Summary .....	20
Embroidery .....	21
Assembly .....	22

Note: Some designs in this collection may have been created using unique special stitches and/or techniques. To preserve design integrity when rescaling or rotating designs in your software, always rescale or rotate designs using the handles directly on-screen.

**\*Fabric Required**

**80338-01 Tile 1**

Size Inches:                      Size mm:                      Stitch Count:  
**6.80 X 4.52 in. 172.6 X 114.7 mm 25757 St.**



1. Pink Sky .....	1755
2. Gray Green Background .....	5552
3. Medium Gray Background Shading .....	0131
4. Leaves .....	5633
5. Light Green Leaf Shading .....	5912
6. Medium Green Leaf Shading .....	5643
7. Dark Green Leaf Shading .....	5326
8. Yellow Leaf Shading .....	0520
9. Stems .....	0345
10. Off White Snow Shading .....	0184
11. White Snow Shading .....	0015
12. Seam/Match Background Fabric .....	0020

**\*Fabric Required**

**80338-02 Tile 2**

Size Inches:                      Size mm:                      Stitch Count:  
**6.83 X 4.52 in. 173.5 X 114.7 mm 18605 St.**



1. Pink Sky .....	1755
2. Gray Green Background .....	5552
3. Medium Gray Background Shading .....	0131
4. Light Gray Background Shading .....	0124
5. Leaf .....	5633
6. Light Green Leaf Shading .....	5912
7. Medium Green Leaf Shading .....	5643
8. Dark Green Leaf Shading .....	5326
9. Brown Leaf Shading .....	0345
10. Branches .....	0128
11. Off White Snow Shading .....	0184
12. White Snow Shading .....	0015
13. Seam/Match Background Fabric .....	0020

Note: Some designs in this collection may have been created using unique special stitches and/or techniques. To preserve design integrity when rescaling or rotating designs in your software, always rescale or rotate designs using the handles directly on-screen.

**\*Fabric Required**

**80338-03 Tile 3**

Size Inches:                      Size mm:                      Stitch Count:  
**6.94 X 4.60 in. 176.2 X 116.9 mm 33310 St.**



- 1. Pink Sky ..... 1755
- 2. Gray Green Background ..... 5552
- 3. Medium Gray Background Shading ..... 0131
- 4. Light Gray Background Shading ..... 0124
- 5. Branches ..... 0128
- 6. Medium Tan Branch Shading ..... 0763
- 7. Dark Brown Branch Shading ..... 1874
- 8. Off White Snow Shading ..... 0184
- 9. White Snow Shading ..... 0015
- 10. Seam/Match Background Fabric ..... 0020

**\*Fabric Required**

**80338-04 Tile 4**

Size Inches:                      Size mm:                      Stitch Count:  
**6.78 X 4.55 in. 172.2 X 115.7 mm 37471 St.**



- 1. Pink Sky ..... 1755
- 2. Gray Green Background ..... 5552
- 3. Medium Gray Background Shading ..... 0131
- 4. Branches ..... 0128
- 5. Medium Tan Tree Shading ..... 0763
- 6. Dark Brown Tree Shading ..... 1874
- 7. Off White Snow Shading ..... 0184
- 8. White Snow Shading ..... 0015
- 9. Seam/Match Background Fabric ..... 0020

Note: Some designs in this collection may have been created using unique special stitches and/or techniques. To preserve design integrity when rescaling or rotating designs in your software, always rescale or rotate designs using the handles directly on-screen.

**\*Fabric Required**

**80338-05 Tile 5**

Size Inches:                      Size mm:                      Stitch Count:  
**6.74 X 4.57 in. 171.3 X 116.0 mm 40243 St.**



■	1. Gray Green Background .....	5552
■	2. Medium Gray Background Shading .....	0131
■	3. Leaves .....	5633
■	4. Light Green Leaf Shading .....	5912
■	5. Medium Green Leaf Shading .....	5643
■	6. Dark Green Leaf Shading .....	5326
■	7. Stem Shading .....	0345
■	8. Berries .....	1902
■	9. Medium Red Berry Shading .....	2022
■	10. Dark Red Berry Shading .....	2115
■	11. Off White Snow Shading .....	0184
□	12. White Snow Shading .....	0015
■	13. Light Red Berry Highlights .....	1521
■	14. Dark Brown Berry Shading .....	0576
■	15. Seam/Match Background Fabric .....	0020

**\*Fabric Required**

**80338-06 Tile 6**

Size Inches:                      Size mm:                      Stitch Count:  
**6.78 X 4.52 in. 172.3 X 114.8 mm 30543 St.**



■	1. Pink Sky .....	1755
■	2. Gray Green Background .....	5552
■	3. Medium Gray Background Shading .....	0131
■	4. Light Gray Background Shading .....	0124
■	5. Leaves .....	5633
■	6. Light Green Leaf Shading .....	5912
■	7. Medium Green Leaf Shading .....	5643
■	8. Dark Green Leaf Shading .....	5326
■	9. Off White Snow Shading .....	0184
□	10. White Snow Shading .....	0015
■	11. Black Bird Shading .....	0020
■	12. Medium Red Bird Shading .....	2022
■	13. Dark Red Bird Shading .....	2115
■	14. Light Red Bird Shading .....	1521
■	15. Rust Red Bird Shading .....	1725
■	16. Bright Red Bird Shading .....	1902
■	17. Beak .....	1321
■	18. Brown Beak Shading .....	1322
■	19. Peach Beak Highlights .....	1352
□	20. White Eye and Nose Highlights .....	0015
■	21. Seam/Match Background Fabric .....	0020

Note: Some designs in this collection may have been created using unique special stitches and/or techniques. To preserve design integrity when rescaling or rotating designs in your software, always rescale or rotate designs using the handles directly on-screen.

**\*Fabric Required**

**80338-07 Tile 7**

Size Inches:                      Size mm:                      Stitch Count:  
**6.81 X 4.48 in. 173.0 X 113.7 mm 32710 St.**



- 1. Dark Gray Background Shading..... 0128
- 2. Gray Green Background ..... 5552
- 3. Medium Gray Background Shading ..... 0131
- 4. Light Gray Background Shading ..... 0124
- 5. Branches ..... 0128
- 6. Medium Tan Branch Shading ..... 0763
- 7. Dark Brown Branch Shading ..... 1874
- 8. Off White Snow Shading ..... 0184
- 9. White Snow Shading ..... 0015
- 10. Seam/Match Background Fabric..... 0020

**\*Fabric Required**

**80338-08 Tile 8**

Size Inches:                      Size mm:                      Stitch Count:  
**6.81 X 4.52 in. 172.9 X 114.9 mm 36668 St.**



- 1. Dark Gray Background Shading..... 0128
- 2. Gray Green Background ..... 5552
- 3. Pink Sky Shading ..... 1755
- 4. Medium Gray Background Shading ..... 0131
- 5. Trees ..... 0128
- 6. Medium Tan Tree Shading ..... 0763
- 7. Dark Brown Tree Shading ..... 1874
- 8. Off White Snow Shading ..... 0184
- 9. White Snow Shading ..... 0015
- 10. Seam/Match Background Fabric..... 0020

Note: Some designs in this collection may have been created using unique special stitches and/or techniques. To preserve design integrity when rescaling or rotating designs in your software, always rescale or rotate designs using the handles directly on-screen.

**\*Fabric Required**

**80338-09 Tile 9**

Size Inches:                      Size mm:                      Stitch Count:  
**6.76 X 4.50 in. 171.8 X 114.3 mm 34985 St.**



■ 1. Gray Green Background .....	5552
■ 2. Medium Gray Background Shading .....	0131
■ 3. Leaves .....	5633
■ 4. Light Green Leaf Shading .....	5912
■ 5. Medium Green Leaf Shading .....	5643
■ 6. Dark Green Leaf Shading .....	5326
■ 7. Brown Leaf Shading .....	0345
■ 8. Yellow Leaf Shading .....	0520
■ 9. Off White Snow Shading .....	0184
□ 10. White Snow Shading .....	0015
■ 11. Medium Red Bird Shading .....	2022
■ 12. Dark Red Bird Shading .....	2115
■ 13. Light Red Bird Shading .....	1521
■ 14. Rust Red Bird Shading .....	1725
■ 15. Bright Red Bird Shading .....	1902
■ 16. Off White Bird Highlights .....	0184
■ 17. Seam/Match Background Fabric .....	0020

**\*Fabric Required**

**80338-10 Tile 10**

Size Inches:                      Size mm:                      Stitch Count:  
**6.79 X 4.49 in. 172.3 X 114.0 mm 41581 St.**



■ 1. Gray Green Background Shading .....	5552
■ 2. Medium Gray Background Shading .....	0131
■ 3. Light Gray Background Shading .....	0124
■ 4. Off White Snow Shading .....	0184
□ 5. White Snow Shading .....	0015
■ 6. Medium Tan Leg Shading .....	0763
■ 7. Dark Brown Leg Shading .....	0128
■ 8. Light Tan Leg Shading .....	0873
■ 9. Black Bird Shading .....	0020
■ 10. Medium Red Bird Shading .....	2022
■ 11. Dark Red Bird Shading .....	2115
■ 12. Light Red Bird Shading .....	1521
■ 13. Rust Red Bird Shading .....	1725
■ 14. Bright Red Bird Shading .....	1902
■ 15. Seam/Match Background Fabric .....	0020

Note: Some designs in this collection may have been created using unique special stitches and/or techniques. To preserve design integrity when rescaling or rotating designs in your software, always rescale or rotate designs using the handles directly on-screen.

## 80338-11 Tile 11

**\*Fabric Required**

Size Inches:                      Size mm:                      Stitch Count:  
**6.78 X 4.52 in. 172.2 X 114.8 mm 27094 St.**



- 1. Dark Gray Background Shading..... 0128
- 2. Gray Green Background Shading ..... 5552
- 3. Medium Gray Background Shading ..... 0131
- 4. Light Gray Background Shading ..... 0124
- 5. Branches ..... 0128
- 6. Medium Tan Branch Shading ..... 0763
- 7. Dark Brown Branch Shading ..... 1874
- 8. Medium Tan Bird Shading ..... 0763
- 9. Medium Red Bird Shading ..... 2022
- 10. Rust Red Bird Shading ..... 1725
- 11. Dark Brown Bird Shading ..... 1874
- 12. Light Tan Bird Shading ..... 1140
- 13. Tan Bird Shading ..... 0934
- 14. Off White Snow Shading ..... 0184
- 15. White Snow Shading ..... 0015
- 16. Seam/Match Background Fabric ..... 0020

## 80338-12 Tile 12

**\*Fabric Required**

Size Inches:                      Size mm:                      Stitch Count:  
**6.75 X 4.50 in. 171.5 X 114.4 mm 38901 St.**



- 1. Dark Gray Background Shading..... 0128
- 2. Gray Green Background Shading ..... 5552
- 3. Medium Gray Background Shading ..... 0131
- 4. Light Gray Background Shading ..... 0124
- 5. Trees ..... 0128
- 6. Medium Tan Tree Shading ..... 0763
- 7. Dark Brown Tree Shading ..... 1874
- 8. Off White Snow Shading ..... 0184
- 9. White Snow Shading ..... 0015
- 10. Seam/Match Background Fabric ..... 0020

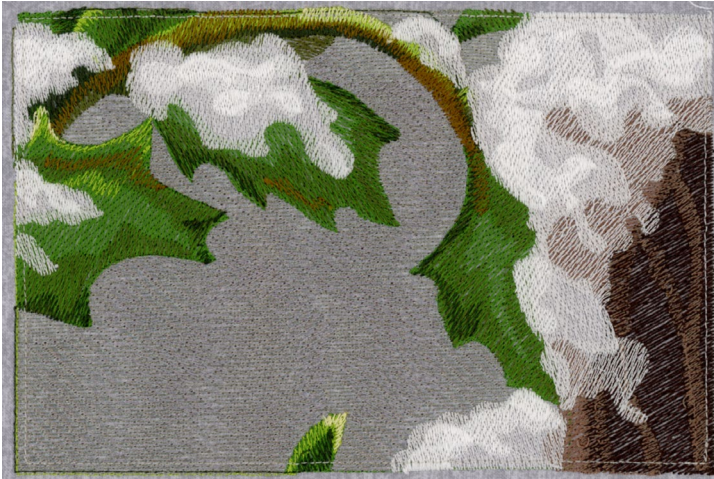


Note: Some designs in this collection may have been created using unique special stitches and/or techniques. To preserve design integrity when rescaling or rotating designs in your software, always rescale or rotate designs using the handles directly on-screen.

**\*Fabric Required**

**80338-13 Tile 13**

Size Inches:                      Size mm:                      Stitch Count:  
**6.71 X 4.48 in. 170.4 X 113.9 mm 35758 St.**

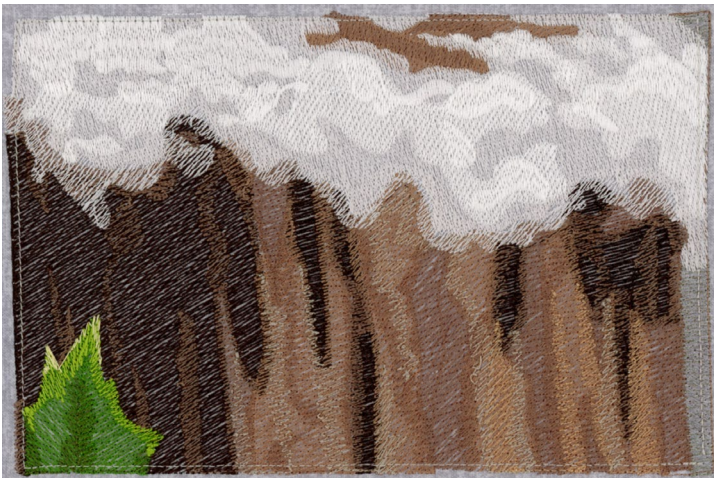


■ 1. Gray Green Background .....	5552
■ 2. Medium Gray Background Shading .....	0131
■ 3. Leaves .....	5633
■ 4. Light Green Leaf Shading .....	5912
■ 5. Medium Green Leaf Shading .....	5643
■ 6. Dark Green Leaf Shading .....	5326
■ 7. Stem and Brown Leaf Shading .....	0345
■ 8. Yellow Leaf Shading .....	0520
■ 9. Dark Brown Post Shading .....	0576
■ 10. Dark Gray Post Shading .....	0128
■ 11. Off White Snow Shading .....	0184
□ 12. White Snow Shading .....	0015
■ 13. Seam/Match Background Fabric .....	0020

**\*Fabric Required**

**80338-14 Tile 14**

Size Inches:                      Size mm:                      Stitch Count:  
**6.73 X 4.47 in. 170.9 X 113.7 mm 37927 St.**



■ 1. Gray Green Background .....	5552
■ 2. Medium Gray Background Shading .....	0131
■ 3. Dark Brown Post Shading .....	0576
■ 4. Medium Tan Post Shading .....	0763
■ 5. Dark Gray Post Shading .....	0128
■ 6. Tan Post Shading .....	0934
■ 7. Light Tan Post Shading .....	0873
■ 8. Leaf .....	5633
■ 9. Medium Green Leaf Shading .....	5643
■ 10. Light Green Leaf Shading .....	5912
■ 11. Yellow Leaf Shading .....	0520
■ 12. Off White Snow Shading .....	0184
□ 13. White Snow Shading .....	0015
■ 14. Seam/Match Background Fabric .....	0020

Note: Some designs in this collection may have been created using unique special stitches and/or techniques. To preserve design integrity when rescaling or rotating designs in your software, always rescale or rotate designs using the handles directly on-screen.

**\*Fabric Required**



### 80338-15 Tile 15

Size Inches:                      Size mm:                      Stitch Count:  
**6.78 X 4.61 in. 172.1 X 117.1 mm 38880 St.**

■	1. Gray Green Background .....	5552
■	2. Medium Gray Background Shading .....	0131
■	3. Light Gray Background Shading .....	0124
■	4. Black Bird Shading .....	0020
■	5. Medium Tan Bird Shading .....	0763
■	6. Medium Red Bird Shading .....	2022
■	7. Dark Red Bird Shading.....	2115
■	8. Dark Brown Bird Shading .....	1874
■	9. Light Tan Bird Shading .....	1140
■	10. Tan Bird Shading .....	0934
■	11. Off White Snow and Bird Shading.....	0184
■	12. Beak .....	1321
■	13. Brown Beak Shading.....	1322
■	14. Peach Beak Shading.....	1352
■	15. White Snow and Eye Highlights .....	0015
■	16. Seam/Match Background Fabric.....	0020

**\*Fabric Required**



### 80338-16 Tile 16

Size Inches:                      Size mm:                      Stitch Count:  
**6.71 X 4.48 in. 170.4 X 113.9 mm 36085 St.**

■	1. Dark Gray Background Shading.....	0128
■	2. Gray Green Background Shading .....	5552
■	3. Medium Gray Background Shading .....	0131
■	4. Trees .....	0128
■	5. Medium Tan Tree Shading .....	0763
■	6. Dark Brown Tree Shading .....	1874
■	7. Off White Snow Shading .....	0184
■	8. White Snow Shading.....	0015
■	9. Medium Tan Bird Shading .....	0763
■	10. Medium Red Bird Shading .....	2022
■	11. Dark Red Bird Shading.....	2115
■	12. Rust Red Bird Shading.....	1725
■	13. Dark Brown Bird Shading .....	1874
■	14. Light Tan Bird Shading .....	1140
■	15. Tan Bird Shading .....	0934
■	16. Off White Bird Shading.....	0184
■	17. Seam/Match Background Fabric.....	0020

Note: Some designs in this collection may have been created using unique special stitches and/or techniques. To preserve design integrity when rescaling or rotating designs in your software, always rescale or rotate designs using the handles directly on-screen.

**\*Fabric Required**

### 80338-17 Tile 17

Size Inches:                      Size mm:                      Stitch Count:  
**6.75 X 4.54 in. 171.5 X 115.2 mm 37771 St.**



■	1. Gray Green Background .....	5552
■	2. Medium Gray Background Shading .....	0131
■	3. Dark Brown Post Shading .....	0576
■	4. Dark Gray Post Shading.....	0128
■	5. Medium Tan Post Shading .....	0763
■	6. Tan Post Shading .....	0934
■	7. Light Tan Post Shading .....	0873
■	8. Off White Snow Shading .....	0184
■	9. Leaves.....	5633
■	10. Light Green Leaf Shading .....	5912
■	11. Medium Green Leaf Shading .....	5643
■	12. Dark Green Leaf Shading.....	5326
■	13. Yellow Leaf Shading.....	0520
■	14. Brown Leaf Shading.....	0345
■	15. Off White Snow Shading .....	0184
□	16. White Snow Shading.....	0015
■	17. Seam/Match Background Fabric.....	0020

**\*Fabric Required**

### 80338-18 Tile 18

Size Inches:                      Size mm:                      Stitch Count:  
**6.79 X 4.52 in. 172.5 X 114.8 mm 41486 St.**



■	1. Dark Brown Post Shading .....	0576
■	2. Medium Tan Post Shading .....	0763
■	3. Dark Gray Post Shading.....	0128
■	4. Tan Post Shading .....	0934
■	5. Light Tan Post Shading .....	0873
■	6. Leaves.....	5633
■	7. Light Green Leaf Shading .....	5912
■	8. Medium Green Leaf Shading .....	5643
■	9. Dark Green Leaf Shading.....	5326
■	10. Brown Leaf Shading.....	0345
■	11. Yellow Leaf Shading.....	0520
■	12. Off White Snow Shading .....	0184
□	13. White Snow Shading.....	0015
■	14. Seam/Match Background Fabric.....	0020

Note: Some designs in this collection may have been created using unique special stitches and/or techniques. To preserve design integrity when rescaling or rotating designs in your software, always rescale or rotate designs using the handles directly on-screen.

**\*Fabric Required**

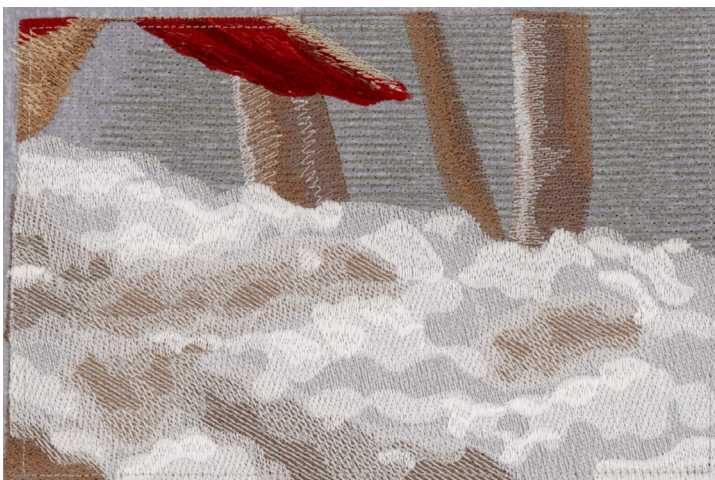


### 80338-19 Tile 19

Size Inches: **6.81 X 4.61 in.** Size mm: **173.0 X 117.2 mm** Stitch Count: **47052 St.**

■	1. Gray Green Background Shading .....	5552
■	2. Medium Gray Background Shading .....	0131
■	3. Dark Gray Post Shading.....	0128
■	4. Medium Tan Post Shading .....	0763
■	5. Tan Post Shading .....	0934
■	6. Light Tan Post Shading .....	0873
■	7. Leaf .....	5633
■	8. Light Green Leaf Shading .....	5912
■	9. Medium Green Leaf Shading .....	5643
■	10. Yellow Leaf Shading .....	0520
■	11. Off White Snow Shading .....	0184
□	12. White Snow Shading .....	0015
■	13. Medium Tan Bird Shading .....	0763
■	14. Medium Red Bird Shading .....	2022
■	15. Dark Red Bird Shading.....	2115
■	16. Dark Brown Bird Shading .....	1874
■	17. Light Tan Bird Shading .....	1140
■	18. Tan Bird Shading .....	0934
■	19. Seam/Match Background Fabric.....	0020

**\*Fabric Required**



### 80338-20 Tile 20

Size Inches: **6.81 X 4.60 in.** Size mm: **173.0 X 116.9 mm** Stitch Count: **38876 St.**

■	1. Gray Green Background Shading .....	5552
■	2. Medium Gray Background Shading .....	0131
■	3. Dark Gray Post and Tree Shading .....	0128
■	4. Medium Tan Post and Tree Shading .....	0763
■	5. Off White Snow Shading .....	0184
□	6. White Snow Shading .....	0015
■	7. Medium Tan Bird Shading .....	0763
■	8. Medium Red Bird Shading .....	2022
■	9. Dark Red Bird Shading.....	2115
■	10. Dark Brown Bird Shading .....	1874
■	11. Light Tan Bird Shading .....	1140
■	12. Tan Bird Shading .....	0934
■	13. Rust Red Bird Shading.....	1725
■	14. Seam/Match Background Fabric.....	0020

Note: Some designs in this collection may have been created using unique special stitches and/or techniques. To preserve design integrity when rescaling or rotating designs in your software, always rescale or rotate designs using the handles directly on-screen.

## 80338-21 Tile 21

\*Fabric Required



Size Inches:                      Size mm:                      Stitch Count:  
**6.77 X 4.58 in. 171.9 X 116.2 mm 42561 St.**

- 1. Medium Gray Background Shading ..... 0131
- 2. Off White Background Snow Shading ..... 0184
- 3. Dark Brown Post Shading ..... 0576
- 4. Dark Gray Post Shading..... 0128
- 5. Leaves ..... 5633
- 6. Light Green Leaf Shading ..... 5912
- 7. Medium Green Leaf Shading ..... 5643
- 8. Dark Green Leaf Shading..... 5326
- 9. Brown Stem and Leaf Shading..... 0345
- 10. Berries ..... 1902
- 11. Medium Red Berry Shading ..... 2022
- 12. Dark Red Berry Shading ..... 2115
- 13. Off White Snow Shading ..... 0184
- 14. White Snow Shading ..... 0015
- 15. Yellow Leaf Shading ..... 0520
- 16. Light Red Berry Highlights..... 1521
- 17. Dark Brown Berry Shading..... 0576
- 18. Seam/Match Background Fabric..... 0020

## 80338-22 Tile 22

\*Fabric Required



Size Inches:                      Size mm:                      Stitch Count:  
**6.77 X 4.57 in. 171.9 X 116.0 mm 41050 St.**

- 1. Dark Brown Post Shading ..... 0576
- 2. Medium Tan Post Shading ..... 0763
- 3. Dark Gray Post Shading..... 0128
- 4. Tan Post Shading ..... 0934
- 5. Light Tan Post Shading ..... 0873
- 6. Berries ..... 1902
- 7. Medium Red Berry Shading ..... 2022
- 8. Dark Red Berry Shading ..... 2115
- 9. Off White Snow Shading ..... 0184
- 10. Leaves ..... 5633
- 11. Light Green Leaf Shading ..... 5912
- 12. Medium Green Leaf Shading ..... 5643
- 13. Dark Green Leaf Shading..... 5326
- 14. Off White Snow Shading ..... 0184
- 15. White Snow Shading ..... 0015
- 16. Brown Leaf Shading ..... 0345
- 17. Yellow Leaf Shading ..... 0520
- 18. Seam/Match Background Fabric..... 0020

Note: Some designs in this collection may have been created using unique special stitches and/or techniques. To preserve design integrity when rescaling or rotating designs in your software, always rescale or rotate designs using the handles directly on-screen.

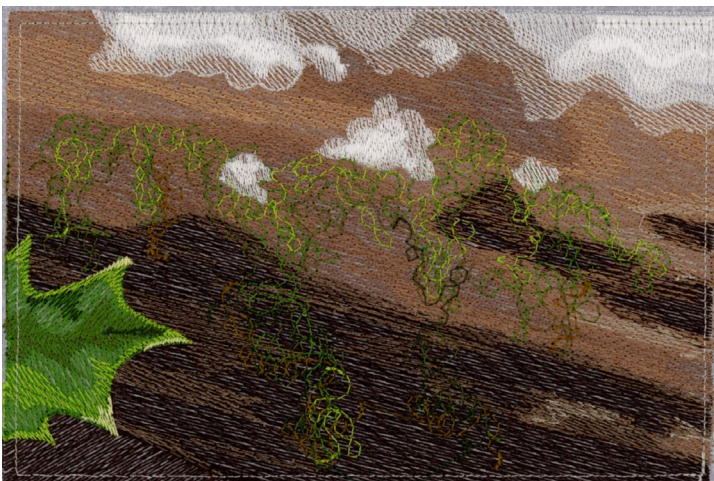
**\*Fabric Required**



### 80338-23 Tile 23

Size Inches:	Size mm:	Stitch Count:
<b>6.78 X 4.55 in.</b>	<b>172.2 X 115.7 mm</b>	<b>41147 St.</b>
■ 1. Dark Brown Post Shading .....		0576
■ 2. Dark Gray Post Shading.....		0128
■ 3. Medium Tan Post Shading .....		0763
■ 4. Tan Post Shading .....		0934
■ 5. Light Tan Post Shading .....		0873
■ 6. Leaves.....		5633
■ 7. Light Green Leaf Shading .....		5912
■ 8. Medium Green Leaf Shading .....		5643
■ 9. Dark Green Leaf Shading.....		5326
■ 10. Brown and Leaf Shading.....		0345
■ 11. Off White Snow Shading .....		0184
■ 12. Berries.....		1902
■ 13. Medium Red Berry Shading .....		2022
■ 14. Dark Red Berry Shading .....		2115
■ 15. Off White Snow Shading .....		0184
□ 16. White Snow Shading.....		0015
■ 17. Light Red Berry Shading .....		1521
■ 18. Dark Brown Berry Shading.....		0576
■ 19. Yellow Leaf Shading.....		0520
■ 20. Seam/Match Background Fabric.....		0020

**\*Fabric Required**



### 80338-24 Tile 24

Size Inches:	Size mm:	Stitch Count:
<b>6.78 X 4.50 in.</b>	<b>172.1 X 114.3 mm</b>	<b>34264 St.</b>
■ 1. Dark Brown Post Shading .....		0576
■ 2. Dark Gray Post Shading.....		0128
■ 3. Medium Tan Post Shading .....		0763
■ 4. Tan Post Shading .....		0934
■ 5. Light Tan Post Shading .....		0873
■ 6. Leaves.....		5633
■ 7. Light Green Leaf Shading .....		5912
■ 8. Medium Green Leaf Shading .....		5643
■ 9. Dark Green Leaf Shading.....		5326
■ 10. Brown Leaf Shading.....		0345
■ 11. Off White Snow Shading .....		0184
□ 12. White Snow Shading.....		0015
■ 13. Yellow Leaf Shading.....		0520
■ 14. Seam/Match Background Fabric.....		0020

Note: Some designs in this collection may have been created using unique special stitches and/or techniques. To preserve design integrity when rescaling or rotating designs in your software, always rescale or rotate designs using the handles directly on-screen.

**\*Fabric Required**

### 80338-25 Tile 25

Size Inches:                      Size mm:                      Stitch Count:

**6.76 X 4.52 in. 171.7 X 114.9 mm 41628 St.**

■	1. Medium Gray Background Shading .....	0131
■	2. Medium Tan Post Shading .....	0763
■	3. Tan Post Shading .....	0934
■	4. Light Tan Post Shading .....	0873
■	5. Off White Snow Shading .....	0184
■	6. Leaf and Stems .....	5633
■	7. Light Green Leaf and Stem Shading .....	5912
■	8. Medium Green Leaf and Stem Shading .....	5643
■	9. Dark Green Leaf and Stem Shading .....	5326
■	10. Brown Stem Shading.....	0345
■	11. Berry.....	1902
■	12. Medium Red Berry Shading .....	2022
■	13. Dark Red Berry Shading .....	2115
■	14. Dark Brown Berry Shading.....	0576
■	15. Off White Snow Shading .....	0184
■	16. Yellow Leaf and Stem Shading.....	0520
□	17. White Snow Shading .....	0015
■	18. Seam/Match Background Fabric.....	0020



**\*Fabric Required**

### 80338-26 Tile 26

Size Inches:                      Size mm:                      Stitch Count:

**6.81 X 4.56 in. 172.9 X 115.8 mm 45738 St.**

■	1. Dark Brown Post Shading .....	0576
■	2. Medium Tan Post Shading .....	0763
■	3. Tan Post Shading .....	0934
■	4. Light Tan Post Shading .....	0873
■	5. Dark Gray Post Shading.....	0128
■	6. Off White Snow Shading .....	0184
■	7. Leaves.....	5633
■	8. Light Green Leaf Shading .....	5912
■	9. Medium Green Leaf Shading .....	5643
■	10. Dark Green Leaf Shading.....	5326
■	11. Brown Leaf Shading .....	0345
■	12. Berries.....	1902
■	13. Medium Red Berry Shading .....	2022
■	14. Dark Red Berry Shading .....	2115
■	15. Off White Snow Shading .....	0184
□	16. White Snow Shading .....	0015
■	17. Dark Brown Berry Shading.....	0576
■	18. Light Red Berry Highlights.....	1521
■	19. Yellow Leaf Shading.....	0520
■	20. Seam/Match Background Fabric.....	0020



Note: Some designs in this collection may have been created using unique special stitches and/or techniques. To preserve design integrity when rescaling or rotating designs in your software, always rescale or rotate designs using the handles directly on-screen.

## 80338-27 Tile 27

\*Fabric Required



Size Inches:                      Size mm:                      Stitch Count:  
**6.79 X 4.54 in. 172.5 X 115.3 mm 40310 St.**

- 1. Dark Brown Post Shading ..... 0576
- 2. Medium Tan Post Shading ..... 0763
- 3. Tan Post Shading ..... 0934
- 4. Light Tan Post Shading ..... 0873
- 5. Dark Gray Post Shading..... 0128
- 6. Medium Gray Background Shading ..... 0131
- 7. Leaves..... 5633
- 8. Light Green Leaf Shading ..... 5912
- 9. Medium Green Leaf Shading ..... 5643
- 10. Dark Green Leaf Shading..... 5326
- 11. Brown Leaf Shading ..... 0345
- 12. Berry..... 1902
- 13. Medium Red Berry Shading ..... 2022
- 14. Dark Red Berry Shading ..... 2115
- 15. Off White Snow Shading ..... 0184
- 16. White Snow Shading ..... 0015
- 17. Yellow Leaf Shading ..... 0520
- 18. Seam/Match Background Fabric..... 0020

## 80338-28 Tile 28

\*Fabric Required



Size Inches:                      Size mm:                      Stitch Count:  
**6.78 X 4.53 in. 172.1 X 115.1 mm 29200 St.**

- 1. Gray Green Background Shading ..... 5552
- 2. Medium Gray Background Shading ..... 0131
- 3. Off White Snow Shading ..... 0184
- 4. Dark Brown Post Shading ..... 0576
- 5. Dark Gray Post Shading..... 0128
- 6. Medium Tan Post Shading ..... 0763
- 7. Leaves..... 5633
- 8. Light Green Leaf Shading ..... 5912
- 9. Medium Green Leaf Shading ..... 5643
- 10. Dark Green Leaf Shading..... 5326
- 11. Brown Leaf Shading ..... 0345
- 12. White Snow Shading ..... 0015
- 13. Yellow Leaf Shading ..... 0520
- 14. Seam/Match Background Fabric..... 0020



Note: Some designs in this collection may have been created using unique special stitches and/or techniques. To preserve design integrity when rescaling or rotating designs in your software, always rescale or rotate designs using the handles directly on-screen.

**\*Fabric Required**

**80338-29 Tile 29**

Size Inches:                      Size mm:                      Stitch Count:  
**6.75 X 4.56 in. 171.4 X 115.8 mm 33558 St.**

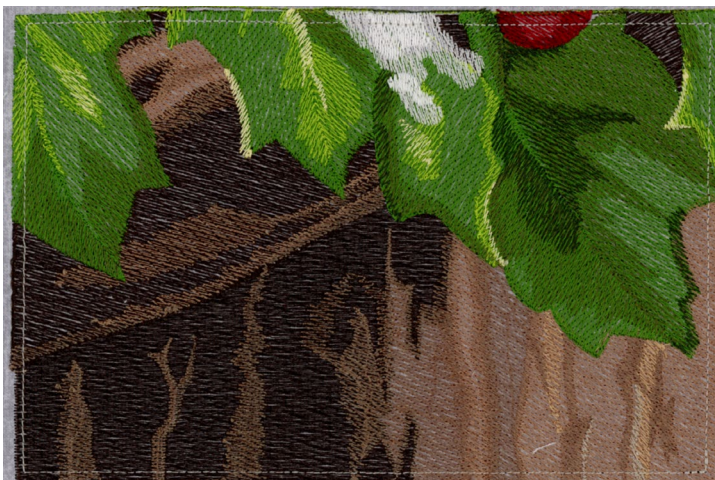


- 1. Off White Snow Shading ..... 0184
- 2. Dark Brown Post Shading ..... 0576
- 3. Medium Tan Post Shading ..... 0763
- 4. Tan Post Shading ..... 0934
- 5. Light Tan Post Shading ..... 0873
- 6. Dark Gray Post Shading..... 0128
- 7. Leaves ..... 5633
- 8. Light Green Leaf Shading ..... 5912
- 9. Medium Green Leaf Shading ..... 5643
- 10. Brown Leaf Shading ..... 0345
- 11. Off White Snow Shading ..... 0184
- 12. White Snow Shading ..... 0015
- 13. Yellow Leaf Shading ..... 0520
- 14. Seam/Match Background Fabric ..... 0020

**\*Fabric Required**

**80338-30 Tile 30**

Size Inches:                      Size mm:                      Stitch Count:  
**6.76 X 4.53 in. 171.7 X 115.0 mm 34274 St.**



- 1. Dark Brown Post Shading ..... 0576
- 2. Medium Tan Post Shading ..... 0763
- 3. Tan Post Shading ..... 0934
- 4. Light Tan Post Shading ..... 0873
- 5. Dark Gray Post Shading..... 0128
- 6. Leaves ..... 5633
- 7. Light Green Leaf Shading ..... 5912
- 8. Medium Green Leaf Shading ..... 5643
- 9. Dark Green Leaf Shading..... 5326
- 10. Off White Snow Shading ..... 0184
- 11. White Snow Shading ..... 0015
- 12. Yellow Leaf Shading ..... 0520
- 13. Medium Red Berry Shading ..... 2022
- 14. Dark Red Berry Shading ..... 2115
- 15. Seam/Match Background Fabric ..... 0020

Note: Some designs in this collection may have been created using unique special stitches and/or techniques. To preserve design integrity when rescaling or rotating designs in your software, always rescale or rotate designs using the handles directly on-screen.

**\*Fabric Required**

### 80338-31 Tile 31

Size Inches:                      Size mm:                      Stitch Count:  
**6.79 X 4.49 in. 172.4 X 114.1 mm 35292 St.**



- 1. Medium Gray Background Shading ..... 0131
- 2. Off White Background Snow Shading ..... 0184
- 3. Medium Tan Post Shading ..... 0763
- 4. Tan Post Shading ..... 0934
- 5. Dark Gray Post Shading..... 0128
- 6. Light Tan Post Shading ..... 0873
- 7. Leaves..... 5633
- 8. Light Green Leaf Shading ..... 5912
- 9. Medium Green Leaf Shading ..... 5643
- 10. Dark Green Leaf Shading..... 5326
- 11. Off White Snow Shading ..... 0184
- 12. White Snow Shading ..... 0015
- 13. Yellow Leaf Shading..... 0520
- 14. Seam/Match Background Fabric..... 0020

**\*Fabric Required**

### 80338-32 Tile 32

Size Inches:                      Size mm:                      Stitch Count:  
**6.72 X 4.54 in. 170.6 X 115.3 mm 33506 St.**



- 1. Medium Gray Background Shading ..... 0131
- 2. Off White Background Snow Shading ..... 0184
- 3. Leaves..... 5633
- 4. Light Green Leaf Shading ..... 5912
- 5. Medium Green Leaf Shading ..... 5643
- 6. Dark Green Leaf Shading..... 5326
- 7. White Snow Shading ..... 0015
- 8. Seam/Match Background Fabric..... 0020

## Stabilizers

- OESD Heavy Weight TearAway 15" (2 rolls)
- OESD Fusible Woven 15" (1 roll)

## Fabrics/Textiles

- 3 1/2 yards light gray cotton fabric
- Note - These yardages assume that stabilizer and fabrics will be cut 10" x 15" for hooping. More or less fabric and/or stabilizer may be needed depending on the size hoop used or if more than one tile is stitched per hooping.
- Batting 30" x 38"
- Backing 1 yard
- Binding 1/3 yard, cut 4 strips width of fabric x 2 1/2" strips, stitch together at 45° angle to create one long strip

## Notions & Tools

- OESD Expert Point & Press Tool
- OESD Perfect Embroidery Press Cloth
- 505 Temporary Spray Adhesive
- Ruler, rotary cutter, mat
- Water soluble thread or invisible thread (optional)
- Contrasting bobbin thread (seam stitch only, may be different colors)
- Fabric marking pen or pencil
- Organ Needle Embroidery Sharp 75/11
- Walking Foot

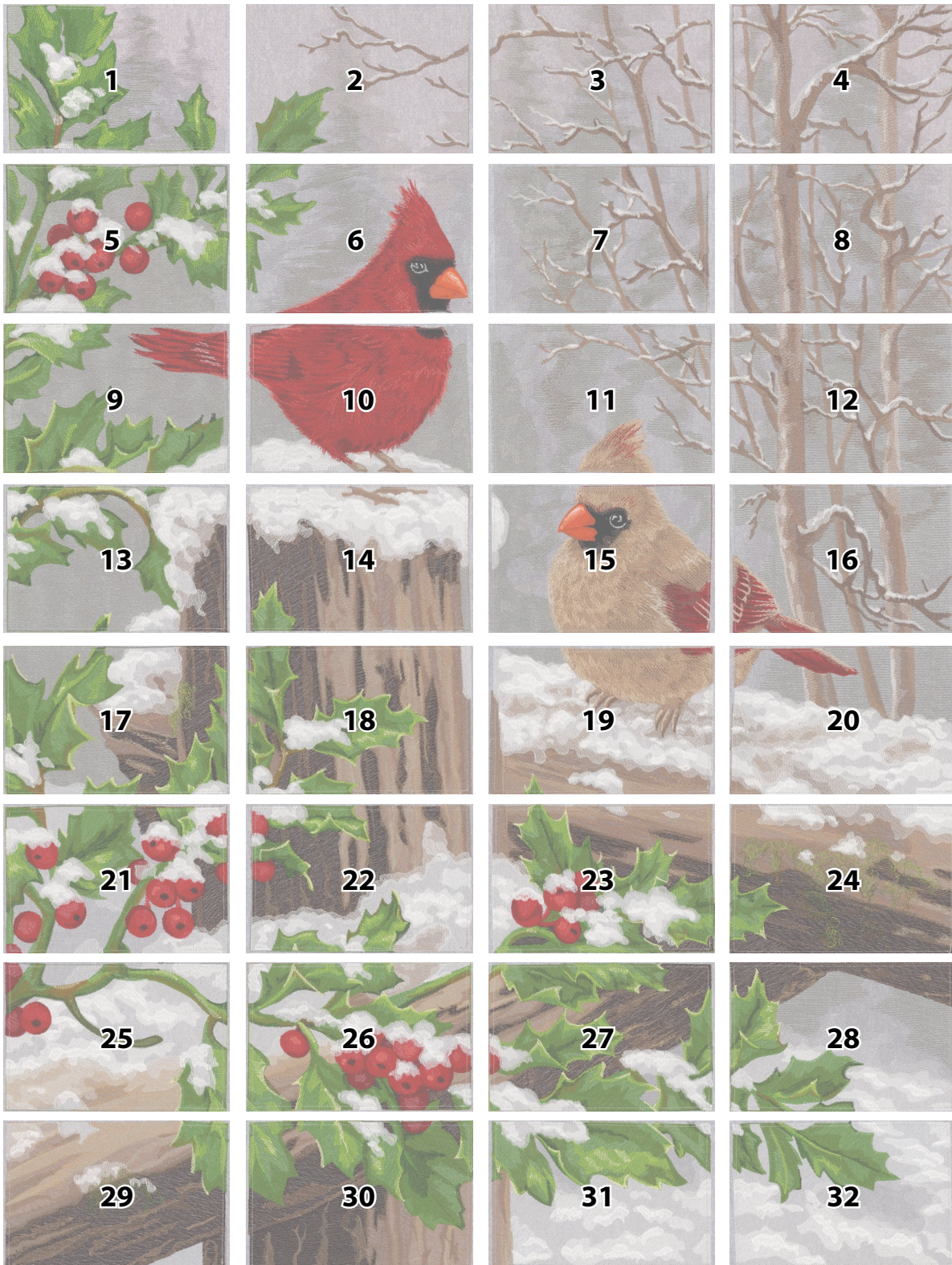
## Isacord Thread Colors

- Per thread chart

# DIAGRAM



COMPLETED TILING SCENE IS 25" X 31"



## Notes

Embroider one of each design file 80338-01 through 80338-32.

For each hooping, cut the following 10" x 15", or large enough to hoop:

- 1 layer of Fusible Woven
- 2 layers of Heavy Weight TearAway
- 1 layer of light gray fabric

Note: To economize on fabric, cut the fabric 15" wide (or the height of the hoop + 2") x width of the fabric. Apply the stabilizers. Move the hoop down the length of the fabric as each block is stitched.

## STEP 1

- Apply Fusible Woven to the back of the background fabric, per the product directions.
- Apply two layers of Heavy Weight TearAway to the wrong side of the background fabric with temporary spray adhesive.
- Hoop fabric and stabilizer.



## STEP 2

- For each tile, stitch the colors per the thread chart.
- The last color change in each block is called "Seam". This line is the guide when trimming and stitching the tiles together and needs to be highly visible on the back side of the tile. Stitch the top color in a thread that blends with the fabric, invisible thread, or water-soluble thread.
- For the bobbin, use a color which contrasts sharply with the back of the tile.
- Note: Since the bobbin color doesn't have to be the same on each tile, this is a great time to use up partially wound bobbins.



# ASSEMBLY



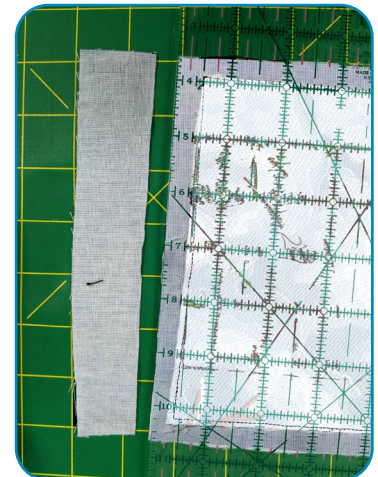
## STEP 3

- After embroidery is complete, press each block face down on a Perfect Embroidery Press Cloth.
- Write the number of the block on the back so it is easily identified during construction! Use a pen or pencil that will not bleed through to the front side.



## STEP 4

- At the cutting mat, place the block right side down.
- Identify the "seam" stitch line. Trim 1/2" inch out from the seam stitch line, on all four sides, to create the seam allowance.
- Note: Accuracy here will greatly facilitate the construction of the scene.



## STEP 5

- Arrange the tiles in the layout for the scene.

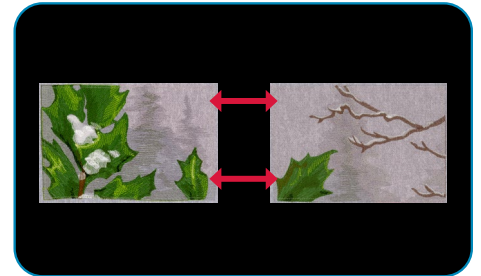


# ASSEMBLY



## STEP 6

- Stitch two adjacent tiles, right sides together; matching the short left and right sides together. Align the matching edges and stitch just inside of the seam line.
- Repeat until all the blocks have been paired.



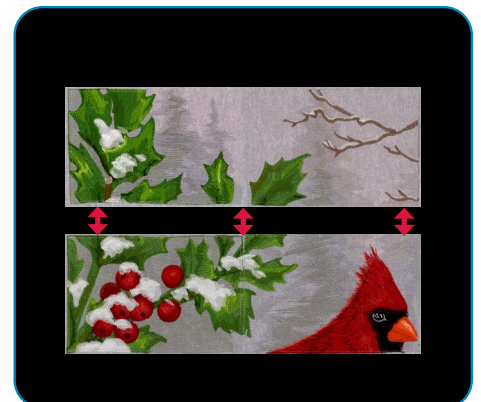
## STEP 7

- Press each seam open.
- Note: If the seams do not come apart easily, press both seam allowances to one side using steam and a cotton or linen setting.
- While warm, open the seam allowance with the large ball of the Expert Point and Press Tool.
- Press again and allow to cool.
- Once cool, remove the excess stabilizer in the seam allowance.
- Do not remove excess stabilizer from inside the seam line.



## STEP 8

- Layout the pressed tiles.
- Pair the connected tiles with the connected tiles to the adjacent pair.



# ASSEMBLY



## STEP 9

- Align the center seams.
- Stitch just inside the seam line connecting all four blocks. Press seams open. If the seams or major points of matching do not match up, try stitching that part first. Check for accuracy. Then stitch across the tiles.



## STEP 10

- Finish connecting the block of tiles to the ones below. Press and remove stabilizer from the seam allowances. Then continue the stitching and pressing process until the scene is complete.



## STEP 11

- Cut batting and backing at least 2" larger than the tiling scene.
- Layer the backing (right side down), batting, and center the tiling scene (right side up).
- Spray baste all 3 layers with temporary spray adhesive.



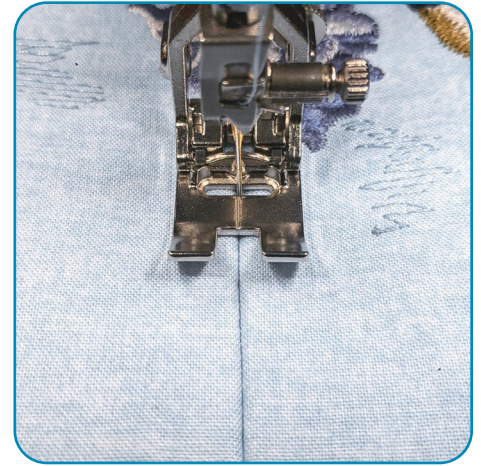


# ASSEMBLY



## STEP 12

- Load the sewing machine with a thread color that blends with the scene or invisible thread.
- Stitch in the ditch where the tiles connect to attach the batting and backing to the top. For best results use a walking foot or a dual feed foot.



## STEP 13

- Trim 1/4" from the edge of the top through all three layers to square up the finished scene. Zigzag over the raw edges to join the edges together.
- Bind as desired.

