



Yateks

V Series Veterinary Endoscope

exclusive
distributor

The Yateks V Series is a fully featured and highly portable veterinary endoscope that uses the latest technology to produce high-quality endoscopic images.

Portable and Affordable

The Yateks V Series is a fully featured, portable endoscope specifically designed for the non-invasive monitoring and treatment of animals.

This multifunctional endoscope has a two-way articulating insertion tube to provide an unobstructed 180-degree view inside the patient. It also has a working channel and forceps which allow for the removal of foreign objects from the animal's body, as well as internal examination and biopsy – quite often removing the need for surgical procedures.

Incorporating an endoscope in your practice will increase your range of services, reduce referrals (via in-house diagnoses), create less stress and discomfort for patients when compared with surgical procedures, allow for decreased anaesthetic time, provide faster recovery times and offers more efficient patient management – great for the animal, the owner and the veterinarian.

Its portability is ideal for clinics, animal hospitals and field work.



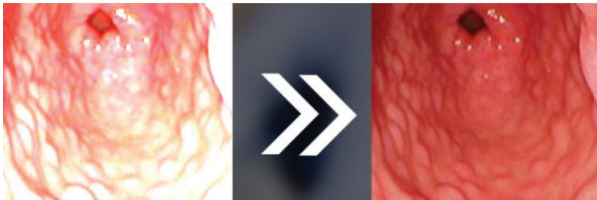
yateks[®]

yateks[®]

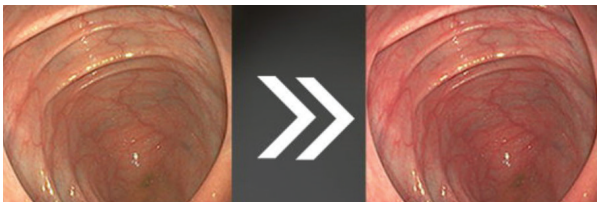
V Series | Treat More Patients in House

FEATURES AND BENEFITS

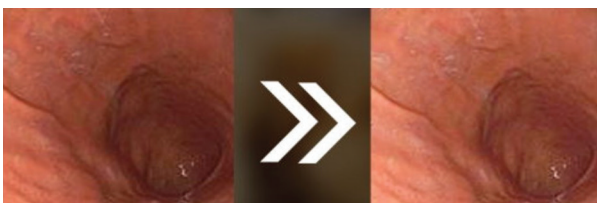
- **Two-way bending insertion tube** allows for an unobstructed 180-degree view for more accurate diagnosis.
- **Multifunctional operation** channel with negative pressure suction.
- **One key extinction** allows you to enhance the visibility of your acquired image with one click.
- **One key white balance** feature automatically detects and adjusts deviations in colour temperature
- **RGB Adjustment** tool offers further editing of images.
- **Steering screen** presents the picture in the best possible angle for any surgical condition.
- **IPS touch screen** offers 1:1 field display and rich colours.



One Key Extinction



One Key RGB Adjustment



One Key White Balance

SPECIFICATIONS

Insertion Probe Length: 600mm		Insertion Probe Length: 1000mm	
Camera head/ probe outer diameter	Working channel inner diameter	Camera head/ probe outer diameter	Working channel inner diameter
2.8mm	No working channel	3.1mm	1.2mm
3.8mm	1.2mm	3.8mm	1.2mm
4.8mm	2.2mm	4.8mm	2.2mm
5.8mm	2.6mm	5.8mm	2.6mm
Functions		Photos, videos, playback	
Camera head articulation		Up 180°/Down 180°	
Display Screen		10.1cm with 480*480 resolution	
Depth of Field		5-80mm	
Image Control		Image Freeze One key extinction One key white balance Image colour adjustment Image scaling Brightness adjustment	
Memory		32GB TF card	
Video out		HDMI	
Battery		Rechargeable, 4 hours continuous	
Supplied with forceps (for use via the working channel):			
• Foreign body forceps ("rat's tooth" and "4-nail-grasper" forceps)			
• Biopsy forceps			



For further information
contact us at info@inline.com.au



1300 033 723



inline.com.au



Inline

IMAGING TECHNOLOGY