



Dexcowin

exclusive
distributor

COCOON Handheld X-ray

Enhance your practice by having the ability to take high-quality, low-dose images on the spot. Freedom of workflow not possible with wall mount X-ray units. Ready to go where you go with no installation required improving practice workflows, diagnosis, service and your bottom line.

Instant and Accurate Diagnosis Onsite

The COCOON is a gun type light weight portable X-ray unit, compatible with all kinds of detectors. Image quality in high definition provides accurate images and the large battery capacity delivers up to 500 shots.

The portable X-ray device provides you with instant and accurate diagnosis without causing further agitation of the patient and eliminates moving the patient unnecessarily which is often the case with a wall-mount X-ray unit.

A handheld X-ray that is as easy to hold as your mobile device, the COCOON is ideal for use chair side, bed side, on home visits and on visits to nursing homes. Bring the X-ray to the patient and treat more patients with the COCOON Handheld X-ray.

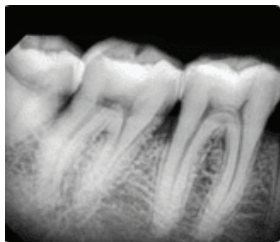
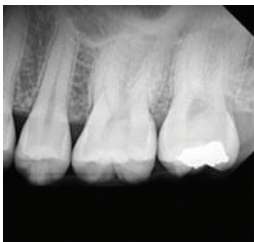
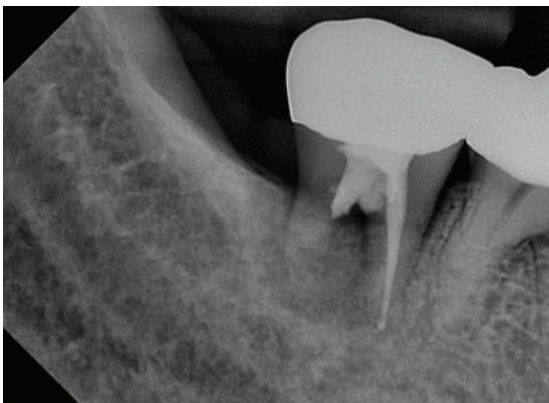
Best of all, the COCOON uses low radiation avoiding unnecessary exposure, while protecting the operator with advanced safety features.



COCOON | The True Handheld Portable X-ray Gun

FEATURES AND BENEFITS

- **Stable positioning** provided by the rotary plate and aiming light rendering sensor holders obsolete.
- **Advanced technology** reducing radiation exposure.
- **Light & compact** weighing only 2kg the X-ray unit is easy to transport and use with gun grip exposure trigger and rapid image capture.
- **Long-life battery** takes up to 500 shots per single 2-hour charge.
- **A patented voice guidance system** conveniently supports and warns users on operational procedures for safety.
- **High resolution quality** with 0.4mm focal point. At 70kV the generator produces clear images while reducing patient dose.
- **Easy to clean** with UV coating.



SPECIFICATIONS

Tube Voltage:	70kV
Tube Current:	2mA (External Power) 1.7mA (Internal Battery)
Tube Focal Spot Size:	0.4mm
Power Consumption:	336VA, 321VA
Cooling Method:	Oil Cooling Method
Total Filtration:	Over 2.3mm Al (Inherent Filtration: 1.0mm Al)
Target Angle:	12.5°
Exposure Time Range:	0.05 -1.0 sec
Exposure Time Interval between the exposure:	0.01 sec
Distance to Target (Distance between Target and Focal Spot):	18cm
Body Dimension:	322(L) x 134(W) x 262(H) [mm]
Body Weight :	2kg (Back Scattered Shield excluded)
Battery:	16.8 V
Battery exposure capacity:	500 shots with full charge
Screen:	Wide UI screen



For further information
contact us at info@inline.com.au



1300 033 723



inline.com.au



Inline

IMAGING TECHNOLOGY