



# Dexcowin

exclusive distributor

## COCOON Handheld X-ray

Enhance your veterinary practice by having the ability to take high-quality, low-dose images on the spot. Every table becomes an X-ray exam table with no installation required, improving practice workflows, diagnosis, service and your bottom line.

### Instant and Accurate Diagnosis Onsite

The COCOON has every possible feature vets in the field currently expect and demand. It is a gun type light weight portable X-ray unit, compatible with all kinds of detectors. Image quality in high definition provides accurate images and the large battery capacity delivers up to 500 shots.

Whether you are treating a horse at the track, or cats and dogs in-house, the portable X-ray device provides vets with instant and accurate diagnosis onsite without causing further agitation of the animal and eliminates unnecessary transportation.

Ready to go where you go. Treat more patients both in-house and on call-outs with the COCOON Handheld X-ray.

Best of all, the COCOON uses low radiation avoiding unnecessary exposure, with advanced safety features.



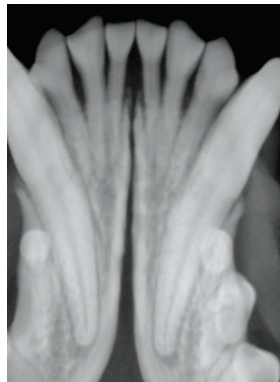
# COCOON | The True Handheld Portable X-ray Gun

## FEATURES AND BENEFITS

- **Stable positioning** provided by the rotary plate and aiming light rendering sensor holders obsolete.
- **Advanced technology** reducing radiation exposure.
- **Light & compact** weighing only 2kg the X-ray unit is easy to transport and use with gun grip exposure trigger and rapid image capture.
- **Long-life battery** takes up to 500 shots per single 2-hour charge.
- **A patented voice guidance system** conveniently supports and warns users on operational procedures for safety.
- **High resolution quality** with 0.4mm focal point. At 70kV the generator produces clear images while reducing patient dose.
- **Easy to clean** with UV coating.

## SPECIFICATIONS

Tube Voltage:	70kV
Tube Current:	2mA (External Power) 1.7mA (Internal Battery)
Tube Focal Spot Size:	0.4mm
Power Consumption:	336VA, 321VA
Cooling Method:	Oil Cooling Method
Total Filtration:	Over 2.3mm Al (Inherent Filtration: 1.0mm Al)
Target Angle:	12.5°
Exposure Time Range:	0.05 -1.0 sec
Exposure Time Interval between the exposure:	0.01 sec
Distance to Target (Distance between Target and Focal Spot):	18cm
Body Dimension:	322(L) x 134(W) x 262(H) [mm]
Body Weight :	2kg (Back Scattered Shield excluded)
Battery:	16.8 V
Battery exposure capacity:	500 shots with full charge
Screen:	Wide UI screen



For further information  
contact us at [info@inline.com.au](mailto:info@inline.com.au)



1300 033 723



[inline.com.au](http://inline.com.au)



**Inline**

IMAGING TECHNOLOGY