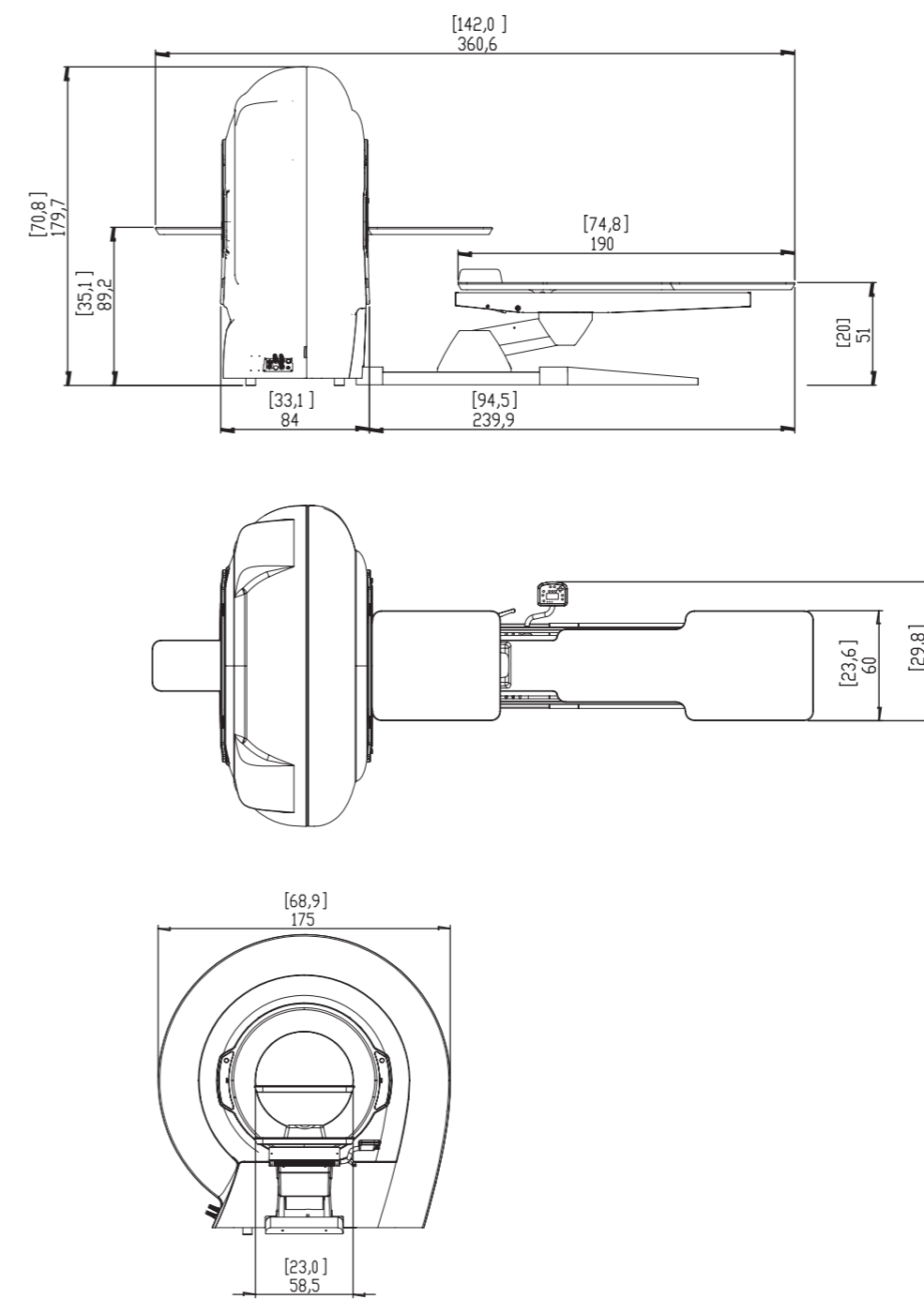


TECHNICAL SPECIFICATIONS.

| | |
|----------------------|---|
| X-ray source | High frequency generator, rotating-anode X-ray tube |
| Focal spot | 0.3 mm |
| Exposure control | SafeBeam™ to reduce exposure according to patient size |
| Sensor | Amorphous silicon flat panel |
| Grey scale | 16-bit |
| 3D scan time | 18 - 36s |
| 3D emission time | 0.9s - 9.0s (single scan) |
| 3D image acquisition | Single scan with Cone Beam technology. Complete rotation (360°) |

| Available FOV Diameter x Height | Resolution | | Selectable 3D scan modes | | | |
|------------------------------------|------------|-------|--------------------------|---------|---------|----------|
| | Standard | HiRes | Eco | Regular | Boosted | Enhanced |
| 21 x 19 cm | ■ | | ■ | ■ | ■ | ■ |
| 18 x 16 cm | ■ | | ■ | ■ | ■ | ■ |
| 15 x 22 cm eFOV | ■ | | ■ | ■ | ■ | ■ |
| 15 x 12 cm | ■ | | ■ | ■ | ■ | ■ |
| 15 x 5 cm | ■ | ■ | ■ | ■ | ■ | ■ |
| 12 x 8 cm | ■ | ■ | ■ | ■ | ■ | ■ |
| 10 x 10 cm | ■ | ■ | ■ | ■ | ■ | ■ |
| 10 x 5 cm | ■ | ■ | ■ | ■ | ■ | ■ |
| 8 x 8 cm | ■ | ■ | ■ | ■ | ■ | ■ |
| 8 x 5 cm | ■ | ■ | ■ | ■ | ■ | ■ |
| 6 x 6 cm | ■ | ■ | ■ | ■ | ■ | ■ |

| | |
|--------------------------------|---|
| Selectable voxel size Standard | 200 - 300 µm |
| Selectable voxel size HiRes | 100 - 150 µm |
| Reconstruction time | Less than 1 minute |
| Ray2D image acquisition | Digital Radiography (single shot, position selectable by user) |
| CineX image acquisition | 1-36s serial radiography, FOV 18 x 19 cm (W x H) |
| Patient positioning | Lying down, prone or supine, in cranial-caudal or caudal-cranial position |
| Weight | 660 Kg |
| Software | NewTom NNT (ISDP®10003:2020 compliant in accordance with EN ISO/IEC 17065:2012 certificate number 2019003109-1) - free NNT viewer |
| DICOM nodes | IHE compliant (Print; Storage-Commitment; WorkList-MPPS; Query/Retrieve) |
| Power supply | 15A @100/115 V~, 12A @200 V~, 10 A @220/230 V~, 8A @240 V~, 50/60 Hz |



Dimensions in centimetres
(dimensions in inches)

Specifications subject to change without prior notice.

