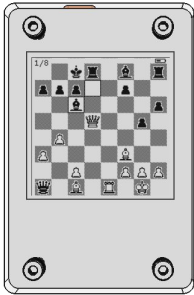
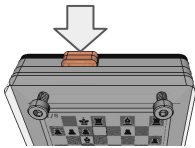


# How to use a Lightnote

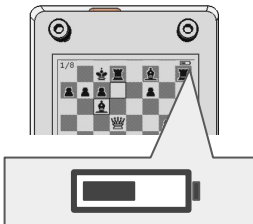
## Use



Read quiz and try to guess the best move.

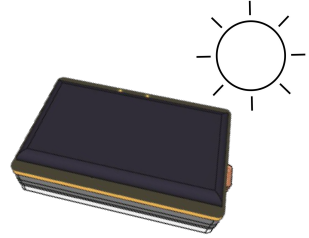


Press button **once** to see the **next** move.  
Or **twice** to go **back**.



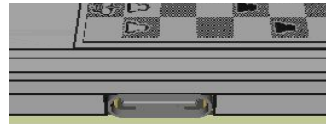
A battery icon will show up when your lightnote is low on charge.

## Charge

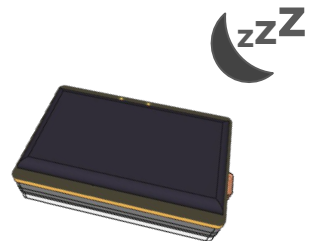


Illuminate back side to charge. 2 minutes of **direct** sunlight will last for about 100 quizzes or 1 day.

or



Attach a type-C cable to the side USB port for 2 minutes or more.

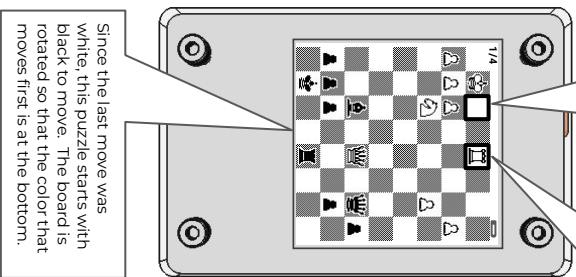


When charge is depleted, the lightnote will stay asleep until recharged.

# Chess Edition Guide

**n/m** means that this is move n in a puzzle with m moves.

The last move is shown with dark borders. Here the white rook moved from **g1** to **e1**.



Since the last move was white, this puzzle starts with black to move. The board is rotated so that the color that moves first is at the bottom.