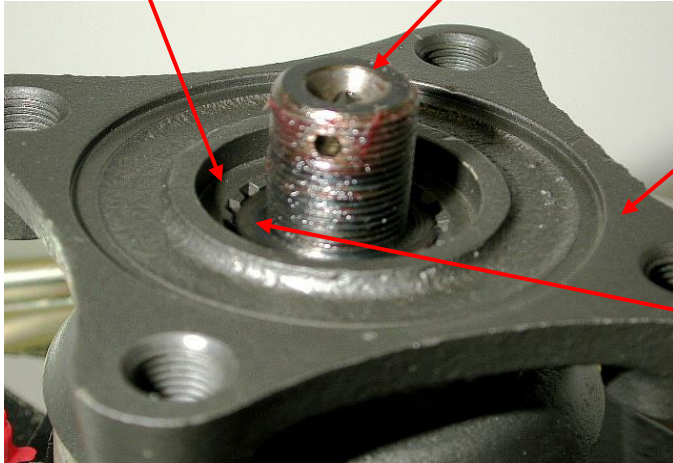


# CAUTION

BEFORE INSTALLING FLANGE ON REAR OF THE SPINDLE ASSEMBLY, REVIEW THE FOLLOWING INFORMATION OR DAMAGE TO UNIT WILL OCCUR AND WARRANTY WILL BE VOID.

SURFACE "A" MOUNTING FLANGE.

SPINDLE

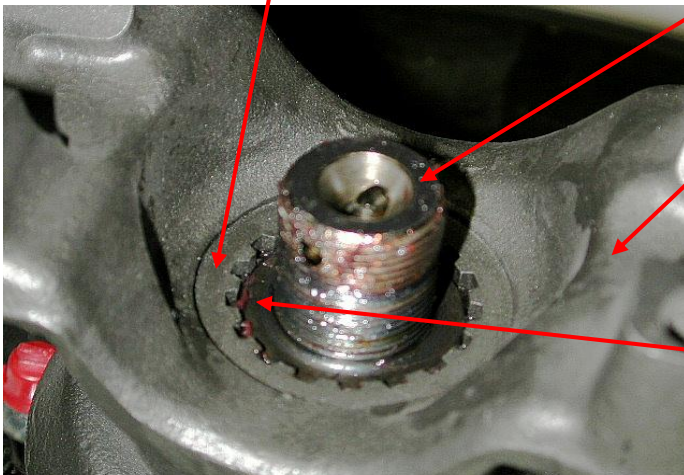


MOUNTING FLANGE 63-79 STY.

THIS SHOULDER ON SPINDLE MUST BE LOWER THEN SURFACE "A" ON MOUNTING FLANGE TO HAVE PROPER TORQUE BEFORE INSTALLING REAR AXLE WASHER.

SURFACE "A" MOUNTING FLANGE

SPINDLE



MOUNTING FLANGE 80-82 STY.

THIS SHOULDER ON SPINDLE MUST BE LOWER THEN SURFACE "A" ON MOUNTING FLANGE TO HAVE PROPER TORQUE BEFORE INSTALLING REAR AXLE WASHER.

## CAUTION:

IF GAP CAN NOT BE MAINTAINED BETWEEN THESE TWO SURFACES, CHECK MOUNTING FLANGE SURFACE NEXT TO BEARING FOR WEAR. IF SURFACE IS FOUND TO BE DEFECTIVE, FLANGE MUST BE REPLACED OR SURFACE NEXT TO BEARING CAN BE GROUND PARALLEL TO MOUNTING SURFACES THEN SHIM TO MAINTAIN GAP.