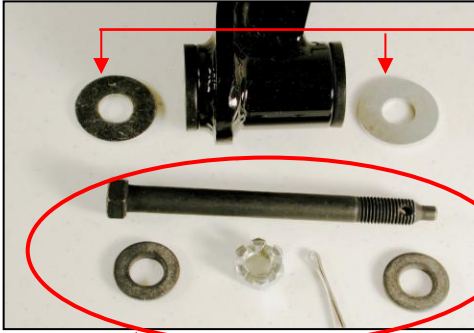
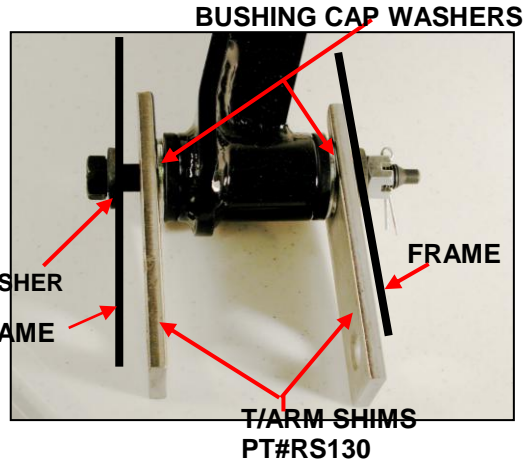


# INSTALLATION INSTRUCTION FOR HD T/ARMS PART NUMBER RS116 & RS117



WASHERS FOR BUSHING CAPS

PT# RS165 KIT



HD GM FLAT WASHER

FRAME

T/ARM SHIMS  
PT#RS130

BUSHING CAP WASHERS

FRAME

- #1 WASHERS THAT COME WITH HD T/ARMS ARE INSTALLED NEXT TO POLY BUSHING .
- #2 SMALL HD WASHER ARE INSTALLED ON THE OUTSIDE OF THE FRAME AS ILLUSTRATED
- #3 T/ARM BOLT THEN GOES THROUGH ASSEMBLY AS SHOWN
- #4 T/ARM SHIMS THEN ARE INSTALLED BETWEEN FRAME AND THE POLY BUSHING WASHER