

# ANGEL HORSE Australia PTY LTD



HPTe-01 is a full functional family Hybrid Caravan. Redesign interior living space.

15ft Hybrid offroad (Roof & Rear Extension) ●



2 Adults + 2 Children ●

Bunk + 1800x2000 Bed ●

## HPTe-01

\$267p/w OR \$69,000 + GST

Solar System + Air Condition

Electric Awning + 3x Battery



**1800 614 993**

**WWW.ANGELHORSE.RV.COM.AU**

**ENQUIRIES@ANGELHORSE.RV.COM.AU**

## **SPECIFICATIONS**



**HPTe-01**

**Body: 6100mm x 2100mm x2500mm**

**Tare : 2400KG**

**ATM:3000KG**

**Ball Weight: 200KG**

## **CHASSIS FEATURES**

**Galvinised Chassis**  
**INDEPENDENT SUPENSION**  
**2X 9 KG GAS BOTTLES**  
**D035 HITCHMASTER COUPLNIG**

## **APPLIANCES**

**STAINLESS KITCHEN WITH 4 STOVE**  
**DOMETIC 2200 AIRCONDITIONER**  
**22" TV IN BEDROOM**  
**DVD PLAYER + AUDIO PACK**  
**SMOKE DETECTOR**  
**EXHAUST FAN IN TOILET**

## **INTERNAL FEATURES**

**QUEEN SIZE BED 1800MMX 2000MM**  
**BIG UPHOLSTERED SEAT**  
**BUILT IN SWIVEL ADJUSTABLE TABLE**  
**2 X BUNK BED**  
**BIG STORAGE SPACE**

## **EXTERNAL FEATURES**

**TV RECEIVER**  
**ELECTRICAL AWNING**  
**2 X 20L OIL DRUM BRACKET**  
**BIG EXTEND TENT**  
**4 X DROP DOWN LEGS**  
**R16 OFF ROAD TYRES 16"**  
**2 X SPARE TYRES**  
**EXTERNAL SHOWER**

## **ELECTRICAL**

**12 " ELECTRICAL BRAKE SYSTEM**  
**LED LIGHT**  
**12V 100X 3 BATTERY**  
**3000W INVERTER**  
**3 X 100 SOLAR PANELS**  
**240 POWER CHARING PORT**  
**240 POWER OUTLET**

## **PLUMBING**

**TRUMA HOT WATER SYSTEM 14L**  
**GAS & ELECTRICITY HOT WATER SYSTEM**  
**2 WHITE WATER METER**  
**THETFOR, NETHERLANDS C403 TOILET**  
**2 X 120L WHITE WATER TANKS**  
**80L GREY WATER TANKS**  
**WATER TANK GUARD PLATE 1.5MM**  
**LARGE CAPACITY WATER PUMP "SEAFLO"**  
**WITH TEMPEARTURE CONTROL VALVE**

**1800 614 993**

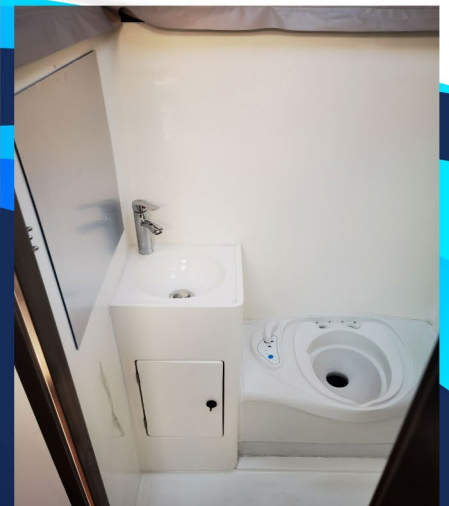
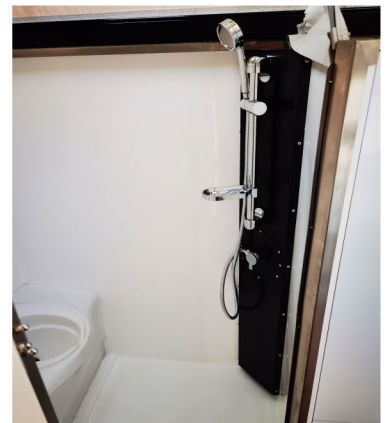
**WWW.ANGELHORSERV.COM.AU**

**ENQUIRIES@ANGELHORSERV.COM.AU**





**HPTe-01**



**1800 614 993**

**WWW.ANGELHORSERV.COM.AU**

**ENQUIRIES@ANGELHORSERV.COM.AU**





**HPTe-01**



**1800 614 993**

**WWW.ANGELHORSERV.COM.AU**

**ENQUIRIES@ANGELHORSERV.COM.AU**