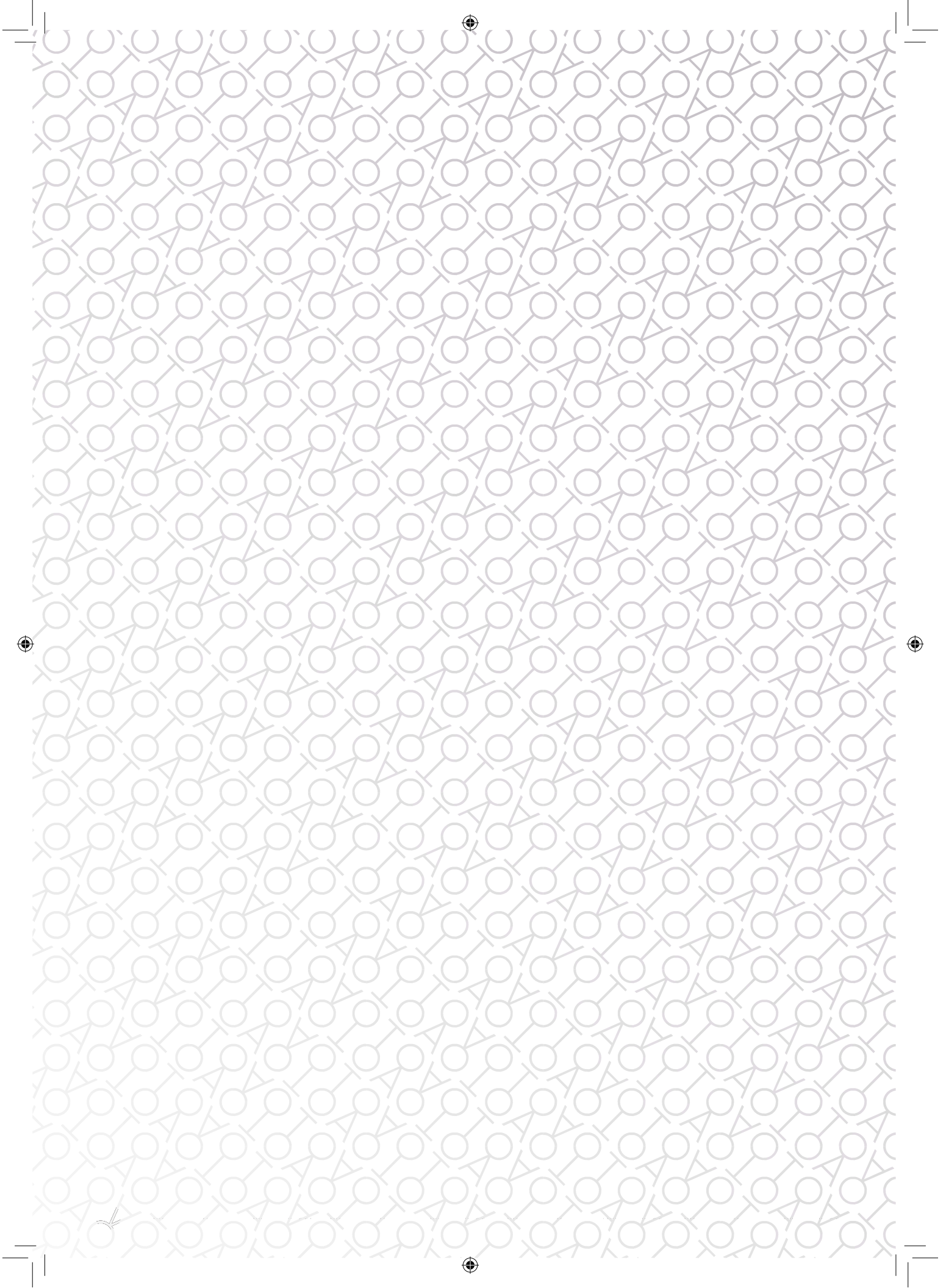




# USER MANUAL





# Important Safeguards

When using electrical appliances, basic safety precautions should always be followed including the following:

- a. Read all instructions.
- b. To protect against risk of electrical shock do not put the machine in water or other liquid.
- c. This appliance is not intended for use by persons (including children) with reduced physical, sensory, or mental capabilities, or lack of experience and knowledge, unless they are closely supervised and instructed concerning use of the appliance by a person responsible for their safety. Close supervision is necessary when any appliance is used by or near children. Children should be supervised to ensure that they do not play with the appliance.  
  
Exception: This appliance is not intended for use by children or by persons with reduced physical, sensory, or mental capabilities, or lack of experience and knowledge. Close supervision is necessary when any appliance is used near children. Children should be supervised to ensure that they do not play with the appliance.
- d. Turn the appliance OFF, then unplug from the outlet when not in use, before assembling or disassembling parts and before cleaning. To unplug, grasp the plug and pull from the outlet. Never pull from the power cord. Permanently Installed – Make sure appliance is OFF when not in use, before putting on or taking off parts, and before cleaning.
- e. Do not operate any appliance with a damaged cord or plug or after the appliance malfunctions, or is dropped or damaged in any manner. Contact the manufacturer at their customer service email address: [support-us@tooa.com](mailto:support-us@tooa.com) for information on examination, repair, or adjustment.
- f. The use of attachments not recommended or sold by the manufacturer may cause fire, electric shock or injury.
- g. Do not use outdoors.
- h. Portable – Do not let cord hang over edge of table or counter.
- i. SAVE THESE INSTRUCTIONS

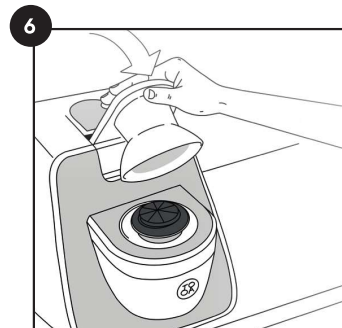
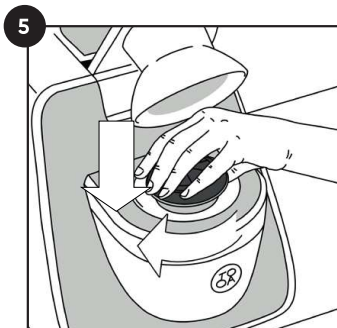
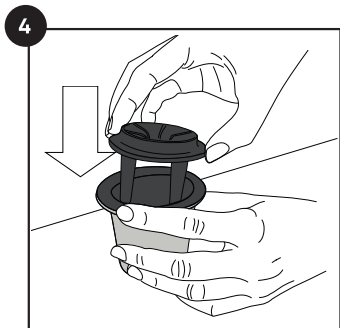
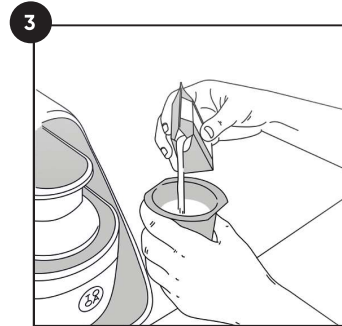
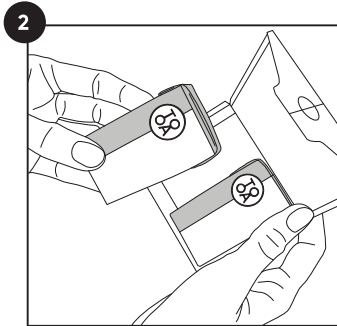
## FCC Notice

This device complies with part 15 of the FCC Rules. Operation is subject to the following two conditions: (1) This device may not cause harmful interference, and (2) this device must accept any interference received, including interference that may cause undesired operation.

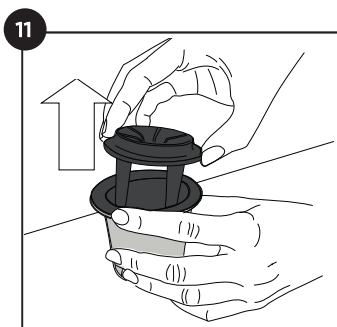
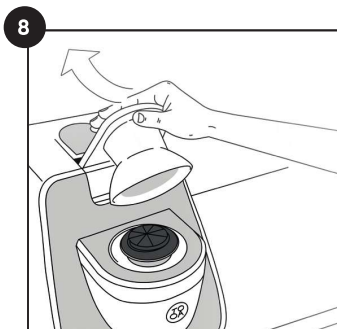
NOTE: This equipment has been tested and found to comply with the limits for Class B digital device, pursuant to part 15 of the FCC Rules. These limits are designed to provide reasonable protection against harmful interference in a residential installation. This equipment generates, uses and can radiate radio frequency energy and, if not installed and used in accordance with the instructions, may cause harmful interference to radio or television reception, which can be determined by turning the equipment off and on, the user is encouraged to try to correct the interference by one or more of the following measures:

- Reorient or relocate the receiving antenna.
  - Increase the separation between the equipment and the receiver.
  - Connect the equipment into an outlet on a circuit different from that to which the receiver is connected.
- Consult the dealer or an experienced Radio/TV technician for help

# Manual operation



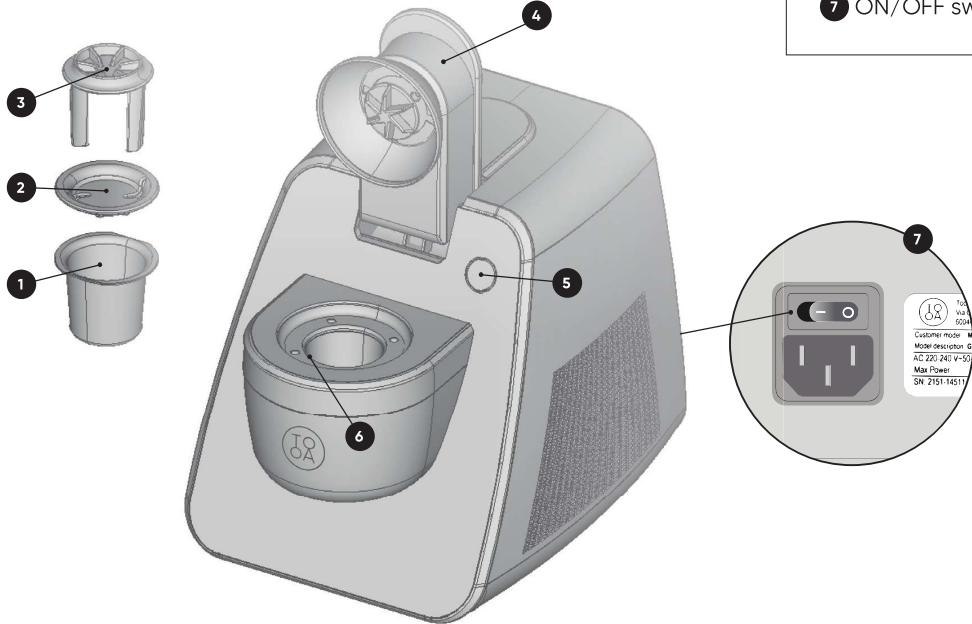
**Gently press and rotate** to expel air  
The contact between beaker and cavity  
is important for a correct preparation



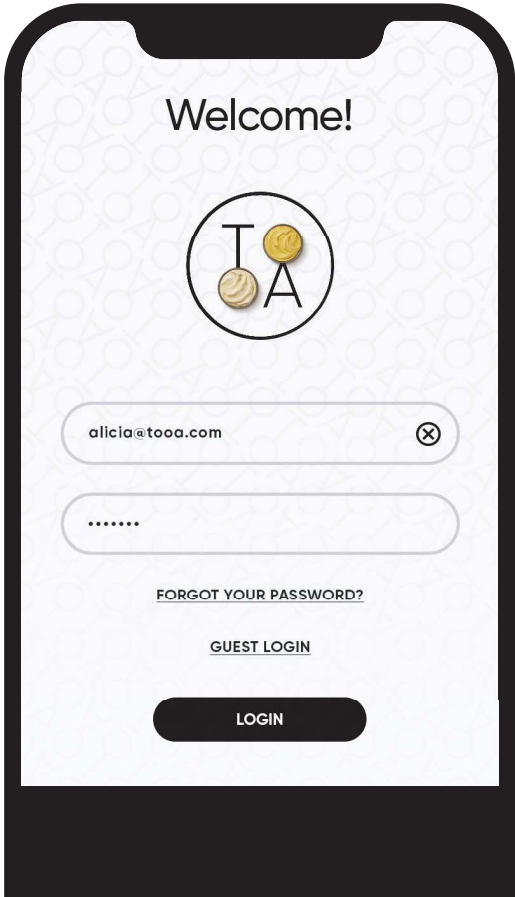
For an **additional cooling cycle**  
restart from point 5

# Machine Overview

- 1 Beaker
- 2 Beaker lid
- 3 Mixing paddles
- 4 Motor Arm
- 5 Start Button
- 6 Slot
- 7 ON/OFF switch

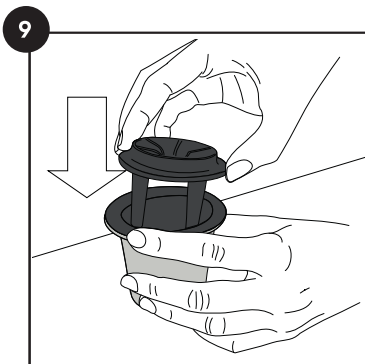
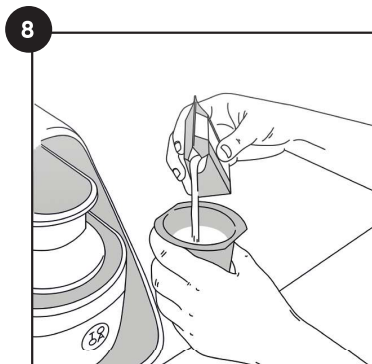
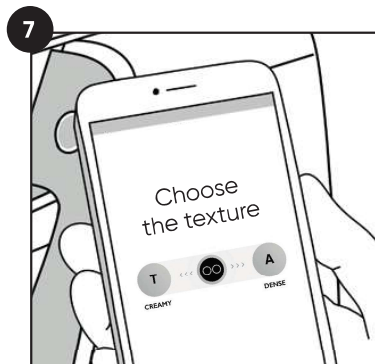
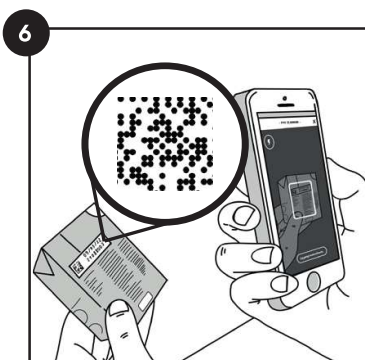
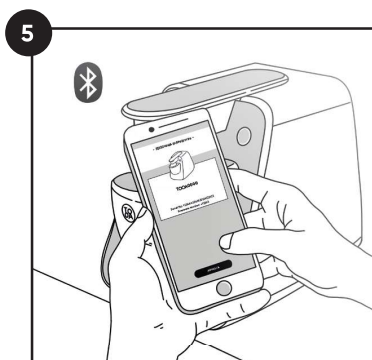
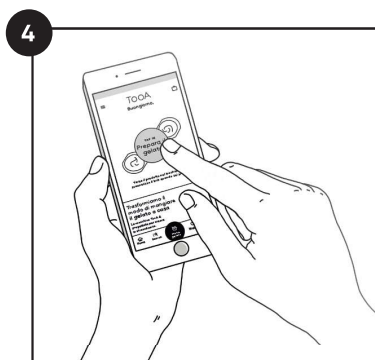
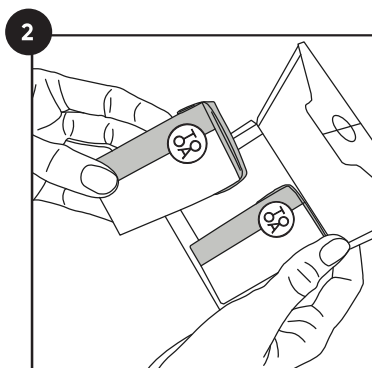


Before using the machine download TooA App by scanning the following QR code

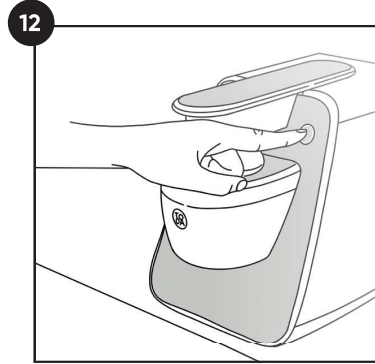
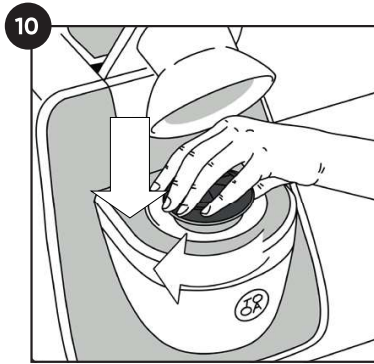




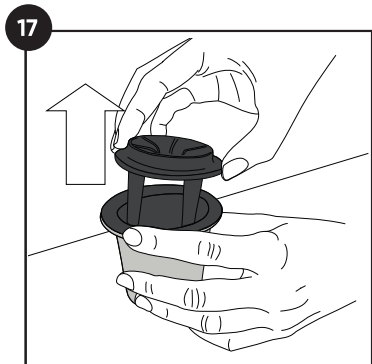
# Automatic operation (via App)



**Gently press and rotate** to expel air  
The contact between beaker and cavity is important for a correct preparation



For the **additional cooling cycle** follow the instructions in the App



# Start button colours

## Machine waiting to start a cycle: idle statuses

Cyan steady



The motor arm is lowered

Green steady



The motor arm is raised

Switched off



Machine is in Stand-by  
All loads are switched off

White/Green flashing



Machine is updating  
(via App)

## Machine executing a preparation cycle

Cyan/Blue flashing



Preparation is in  
progress

White flashing



Paused

Cyan/Blue steady



Your Gelato is ready

Magenta flashing  
(ONLY whit App)



Additional cooling  
cycle

# Useful tips

### Additional cooling cycle

Directly from the machine, pressing the start button. An additional cooling cycle may be necessary when the ambient temperature exceeds 25°C.

### End of preparation

As soon as the preparation cycle is complete, remove the beaker. Keeping the beaker in its slot could cause the Gelato to melt quickly.

### Brik QR code

Once the cycle is complete, the QR code on the brik will no longer enable the machine for another cycle. Only in the event of a temporary power failure can the QR code be reused.

### Machine update by App

Follow the instructions given by App and do not power off the machine during the full update process.

### Important note for App users

The additional cooling time is only available once for each preparation cycle.

Once the cycle is complete, the QR code on the used TooA brik will no longer enable the machine for another cycle.

Anyway manual operation is always available

### Pause Cycle

Any cycle can be paused only once.

### Repeated preparations

At the end of a cycle the machine is immediately ready to prepare another Gelato. However, we recommend a two-minute pause after 6 consecutive preparations to restore the best operating conditions.

### How to store briks

For an improved performance of the machine, it is advisable to refrigerate the carton a few hours before use. In any case, the briks can be stored at room temperature, in a cool, dry place and away from heat sources.



# Cleaning and maintenance

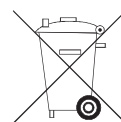
**Before each cleaning operation**, switch off the machine by switching the power button to OFF at the back of the machine or by disconnecting the plug from the power socket.

**Before first use and after each preparation**, wash the beaker and the mixing paddles thoroughly using water and non-aggressive dishwashing detergents. **You can also wash them at low temperatures in the dishwasher.**

**Use a damp cloth for the external parts of the machine** without ever laying it on one side or turning it upside down. **Make sure not to scratch the surface of the beaker**, as damage to the inner or outer coating can impair its functionality.



Environment protection first!



Your appliance contains valuable materials which can be recovered or recycled. Leave it at a collection point.

# Contact us

If you experience any problems or have any questions, please get in touch at one of the following places:



+39 348 8644411



support@tooa.com

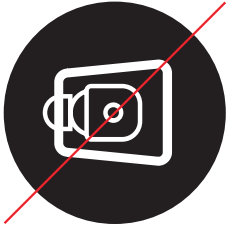


TooA S.p.A.  
Via Giovanni Pascoli, 2  
60044 Fabriano (AN),  
Italia



+39 071 2133610

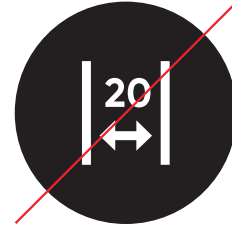
# Installation



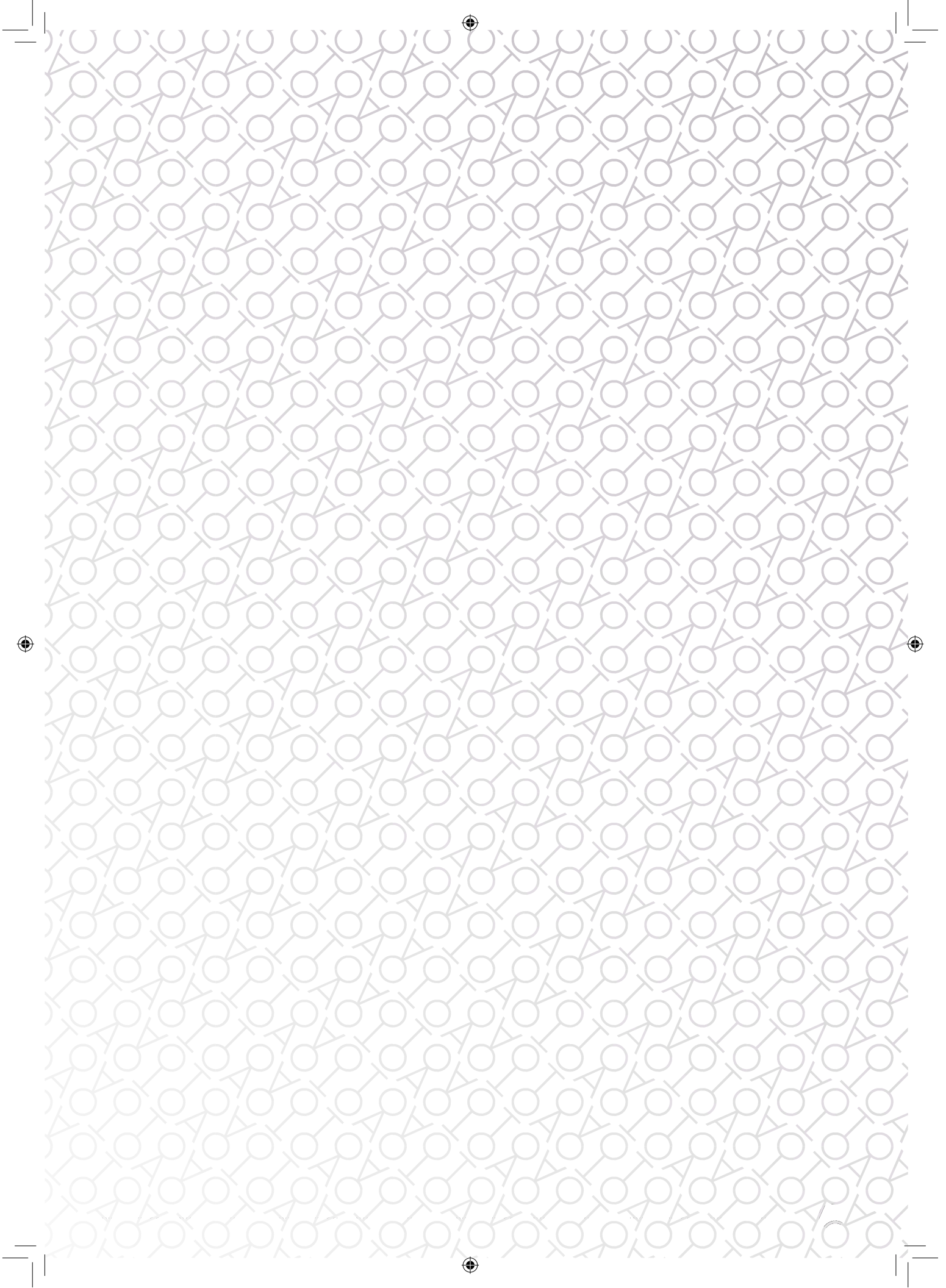
Do not lay the machine on one side or turn it upside down.



The machine is climate class N and can operate up to 32°C room temperature.



Leave at least 20 cm of space around the machine for free air circulation and better performance. Do not cover the ventilation grids.





tooa.com

MA-CO-0038-06-US