

Modular Video Wall Controller 3D/4K dot-to-dot large scale screen solution



MH2

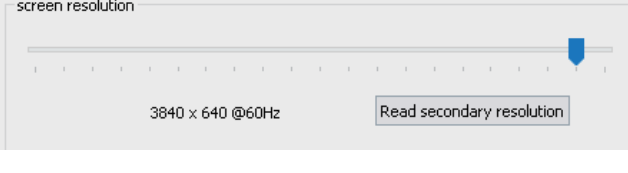
- * Customizable output resolution
- * Support EDID Management
- * 3D splicing and switching
- * Pixel to pixel splicing of multi-channel 4K input
- * Visualization software
- * Support IPAD Control
- * Support DLP\Projection edge blending
- * Single port support max 8 images
- * One unit supports max 288 inputs and 160 outputs
- * Support 4K2K@60 Output

Shenzhen Great Video Science&Technology Co.,Ltd

Features

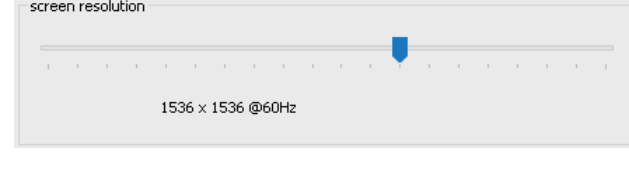
Customizable output resolution

Support max output resolution 3840 in horizontal and 2048 in vertical, any resolution within 3840* 2048 is configurable. One unit supports max outputs of 144*2K.



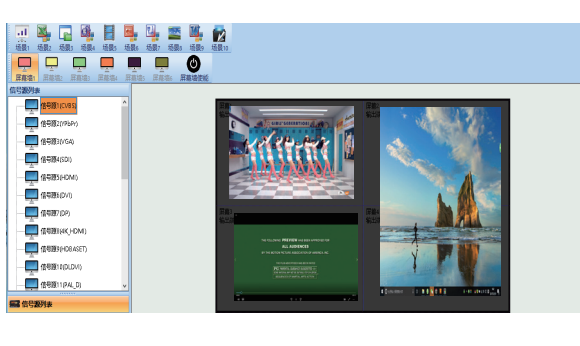
Configurable input EDID

Configurable input EDID: support program PC to identify special resolution, it makes "pixel to pixel" much easier



Visualization software

The software shows the displaying signal, real-time editing makes monitoring easier.



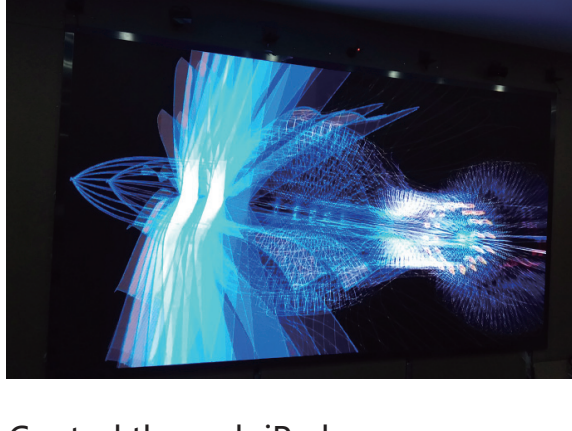
Support max 8 different images via one single port

One single port of the output module supports 8 images at the same time. Total 8 layers processing, support any overlapping at any position on the video wall.



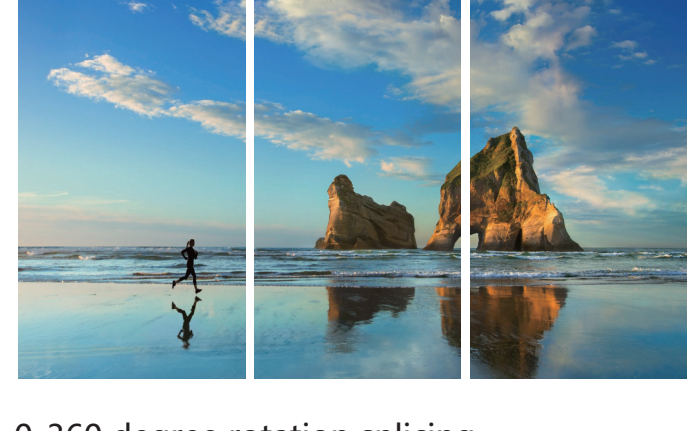
3D splicing

Support left and right eye 3D splicing mode, 120HZ input and output 3D splicing mode. With internal gen-lock 3D seamless split fusion, switching between 2D and 3D switching between 2D and 3D mode could be done by software.



4K pixel to pixel splicing

support multi-channel 4K input, to realize huge screen pixel to pixel splicing With internal gen-lock



Control through iPad

Wireless control via IPAD, support different bank switching and Control protocols, also support third party control.



0-360 degree rotation splicing

Support any degree (0-360) rotation splicing between different sizes, different screen LED/LCD/Projectors

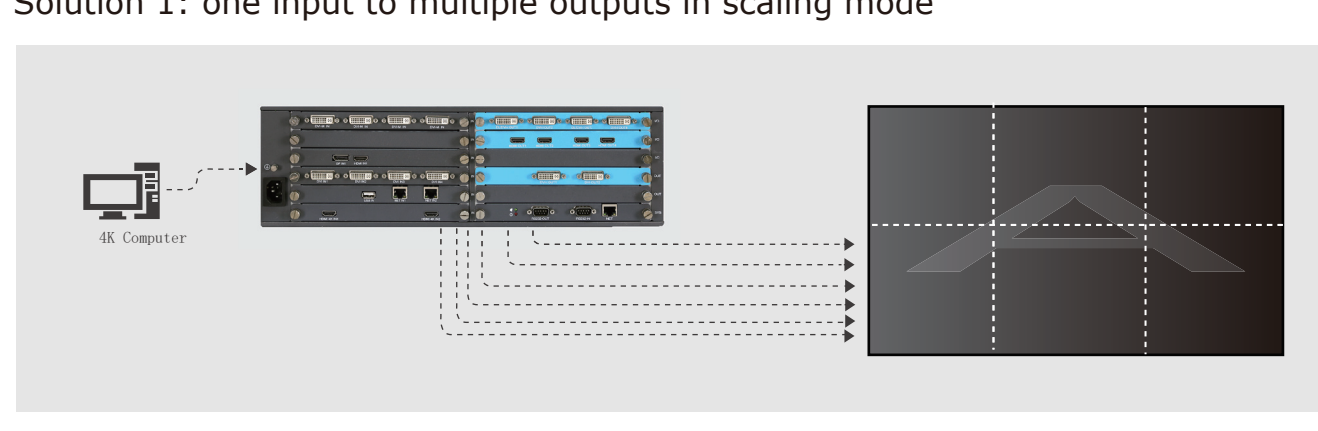


Innovation comes from the constant pursuit !

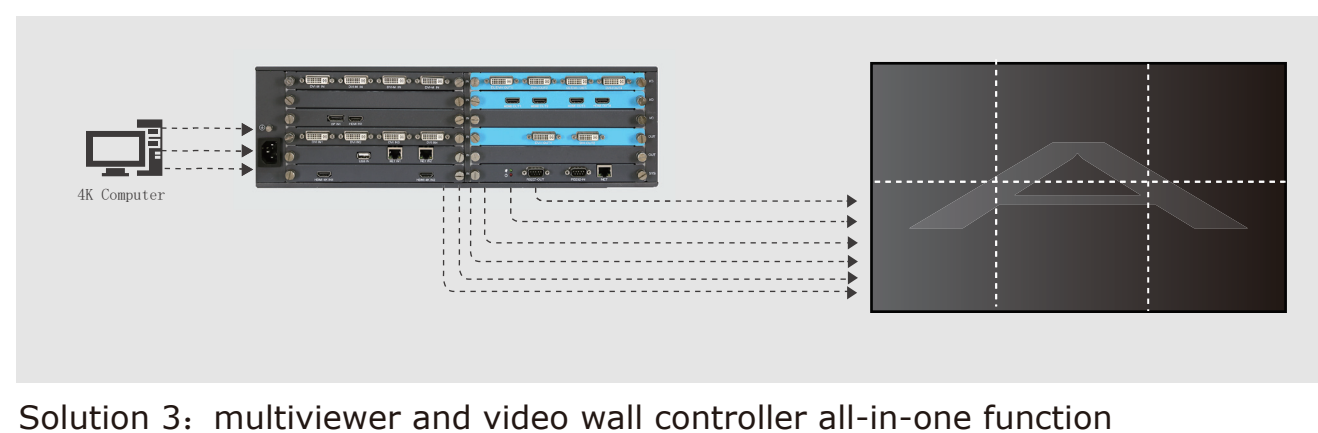


Solutions

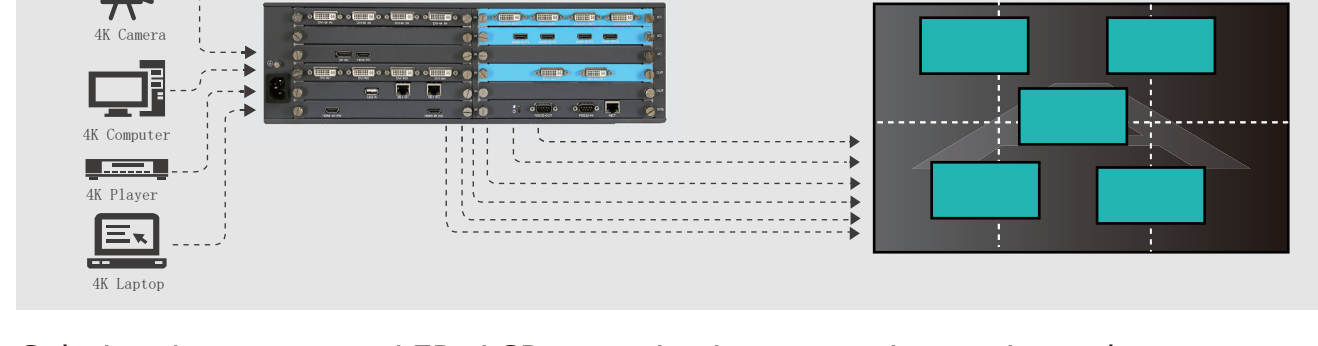
Solution 1: one input to multiple outputs in scaling mode



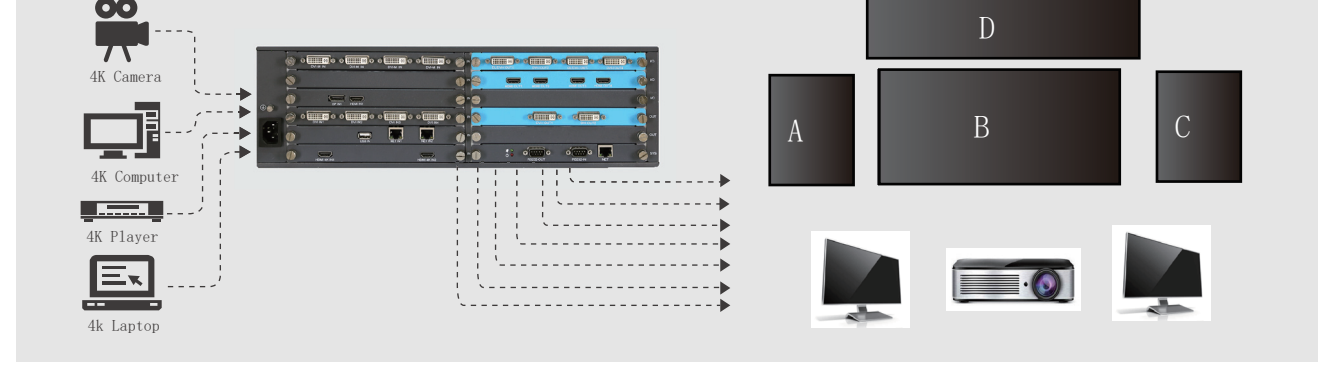
Solution 2: multiple inputs and outputs in pixel to pixel splicing mode



Solution 3: multiviewer and video wall controller all-in-one function



Solution 4: connect to LED, LCD or projection screen in matrix mode



Classic comes from constant effort !



Specifications

Input module	4 DVI-M	Input: HDMI/DVI/VGA/YpPr/CVBS Resolution: 2K Power consumption: 15W
	2 HDMI 4K	Input: HDMI 1.4b/HDMI1.3/DVI 1.0 Resolution: 2K\4K2K@30Hz Power consumption: 12W
	4 SDI	Input: SDI Resolution: 3G/HD/SD Power consumption: 12W
	2 IP	Input: Webcams/Ethernet Resolution: 2K Power consumption: 16W
	Output module	4 DVI
2 HDMI 4K		Output: HDMI 1.4b/HDMI1.3/DVI 1.0 Resolution: Within 3840*2160@30Hz Power consumption: 20W

4 DVI-D	Input: HDMI 1.3/DVI 1.0 Resolution: 2K Power consumption: 12W
---------	---

4 HDMI	Input: HDMI 1.3/DVI 1.0 Resolution: 2K Power consumption: 12W
--------	---

8 CVBS	Input: CVBS Resolution: PAL, NTSC, SECAM Power consumption: 12W
--------	---

2 4K@60Hz HDMI /DP	Input: Displayport 1.2/HDMI 2.0 Resolution: 2K\4K2K@30Hz\4K2K@60Hz Power consumption: 15W
--------------------	---

4 HDMI	Output: HDMI 1.3/DVI 1.0 Resolution: max width 3840, height 1080 Power consumption: 20W
--------	---

1 HDMI 2.0 4K@60	Output: HDMI2.0 Resolution: Within 3840*2160*60 Power consumption: 20W
------------------	--

Genlock System control card	Input: BNC with Genlock Control port: RS232 in/out, RJ45 100M Power consumption: 10W
-----------------------------	--

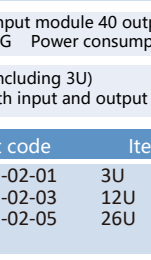
2 DVI Preview card	Output: DVI Resolution: 2K Power consumption: 20W
--------------------	---

Device	Input voltage: AC input 100V~240V, 50/60Hz		
	Power consumption: depends on module qty		
	Temperature: 0-70°C		
	Humidity: 15-85%		
	Weight: depends on module qty		
	1.5U	Supports max 5 modules: max 3 input module 2 output modules Size:485*325*70mm Weight: 6.5KG Power consumption: 90W	
3U	Supports max 11 modules: max 9 input module 5 output modules Size:485*325*135mm Weight: 9KG Power consumption: 250W		
8U	Supports max 20 modules: max 18 input module 10 output modules Size:485*310*355mm Weight: 18KG Power consumption: 450W		
12U	Supports max 40 modules: max 36 input module 20 output modules Size:485*310*535mm Weight: 20KG Power consumption: 800W		
18U	Supports max 60 modules: max 54 input module 30 output modules Size:485*310*800mm Weight: 25KG Power consumption: 1000W		
26U	Supports max 80 modules: max 72 input module 40 output modules Size:485*310*1175mm Weight: 40KG Power consumption: 2000W		



Product code	Item name	Product code	Item name
GRV-MH2-02-00	1.5U chassis	GRV-MH2-02-01	3U chassis
GRV-MH2-02-02	8U chassis	GRV-MH2-02-03	12U chassis
GRV-MH2-02-04	18U chassis	GRV-MH2-02-05	26U chassis

Web :www.szgreatvideo.com
E-mail :Sales@greatvideo.com
TEL :+86 0755 86709019
WeChat :18129861357



Innovation, classics, future !

