



***M2 MINICAM***  
INSTALLATION GUIDE

## **Main Features**

- 180° FOV Optical Lens
- 5M(16') Integrated USB Cable
- Easy monitoring of router bit and sled at work.
- Remote monitoring of any problems occurring during cutting
- Helps with remotely zeroing out your bit visually.
- USB bus powered
- Dimensions 70 x 67.5 x 68 mm / 2.75" x 2.67" x 2.68"

## **Box Contents**

- M2 MINICAM Camera Unit
- Installation Guide
- X4 Cable retention clips
- X3 M2 Philips #1 Screws

## Safety Instructions



-Contains small parts which can be swallowed by children



-Water is lethal for most electronic devices, unless they are made waterproof. M2 MINICAM is not intended for use in a humid or wet environment. No liquids or other conduction substances must get into your M2 MINICAM. Should this happen, the module should be disconnected from main power immediately, dried, examined and cleaned.



-Do not expose the M2 MINICAM to temperatures above +50°C or below -20°C. Do not leave in direct sunlight.



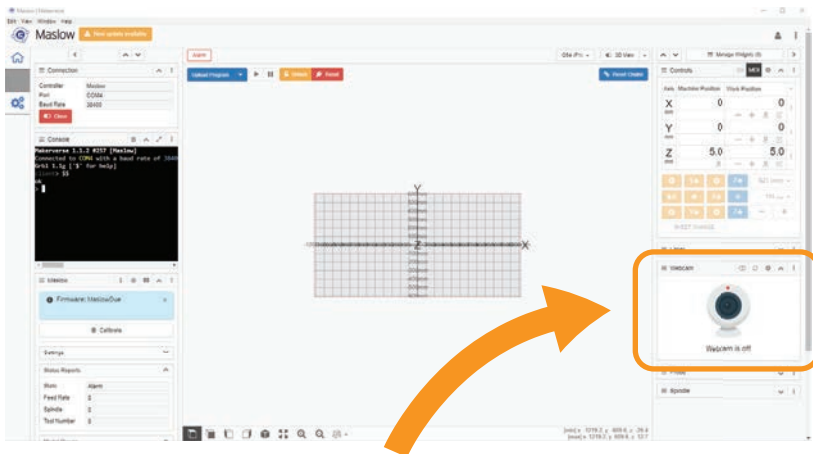
-Transport M2 MINICAM carefully. Never let it drop or fall over or damage to the lens may occur.



-Never leave your M2 CNC Machine unattended in case of cutting failure. Always remain within a clear line of sight of your CNC machine. Fire or damage to your CNC machine, M2 Minicam or personal property may occur.

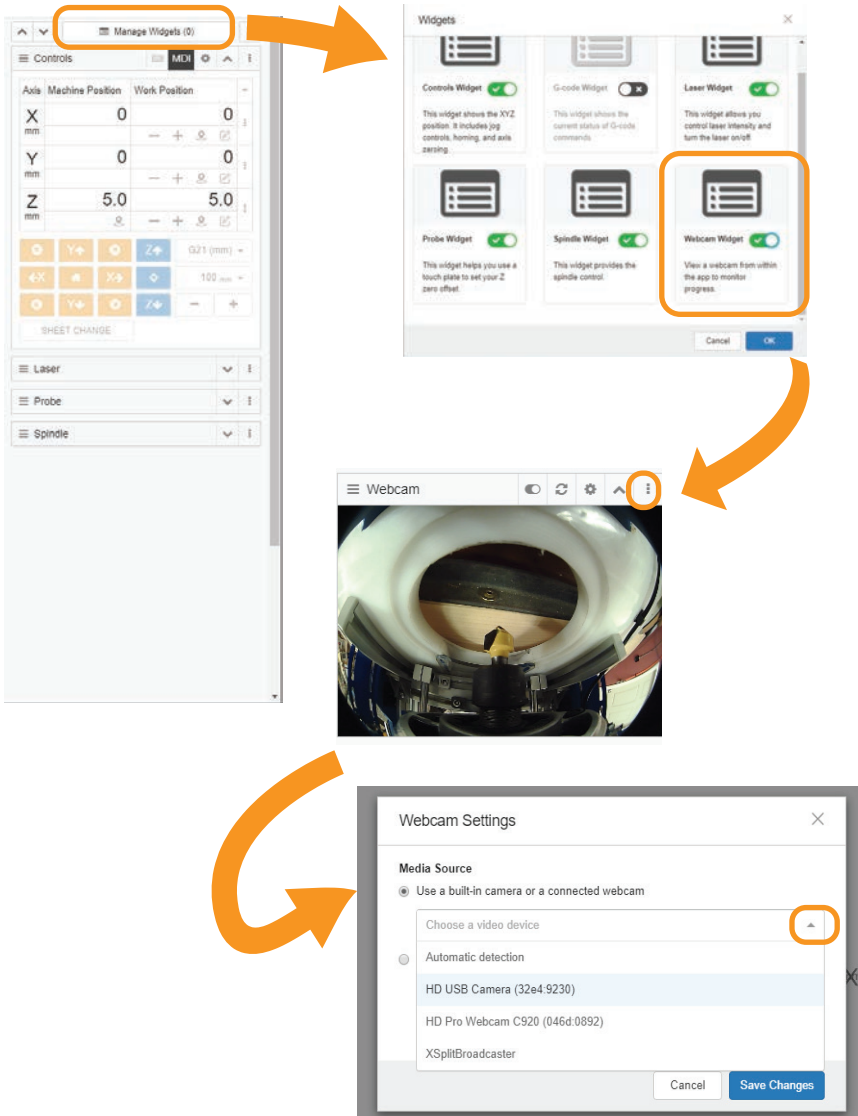
# Installation

1. Remove M2 sled from chains & place on flat surface for easier installation
2. Plug M2 MINICAM USB into computer.
3. Open MakerVerse



4. On right hand side of MakerVerse search for the webcam widget and ensure its toggled on & that "HD USB camera" is selected as the source using the cog wheel settings menu.

5. If you don't see the webcam widget, select "manage widgets" at the top right side of the screen. Scroll till you see webcam and toggle on

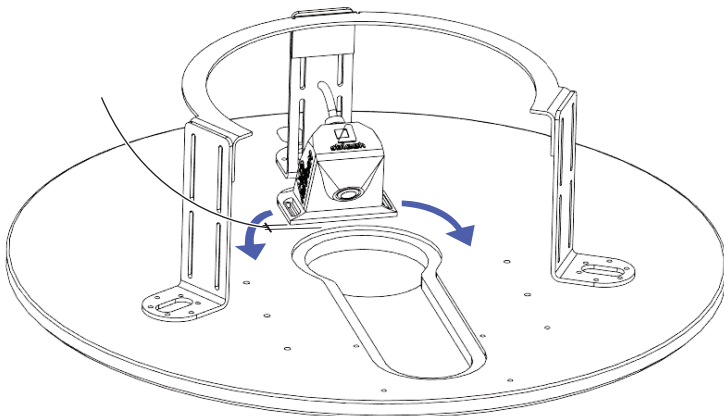


*Pro Tip: we like to use XSplit or OBS broadcasting software, then forward it's output to MakerVerse's webcam widget for much more control & recording options. YouTube can help you learn what these are and how to use them.*

6. Position your camera on the sled using the webcam feed to help find the best position that works for you. We recommend placing the camera about 10-12mm(3/8") from the top edge of the center hole so you can see the bit as well as the dust collection port if it becomes clogged.

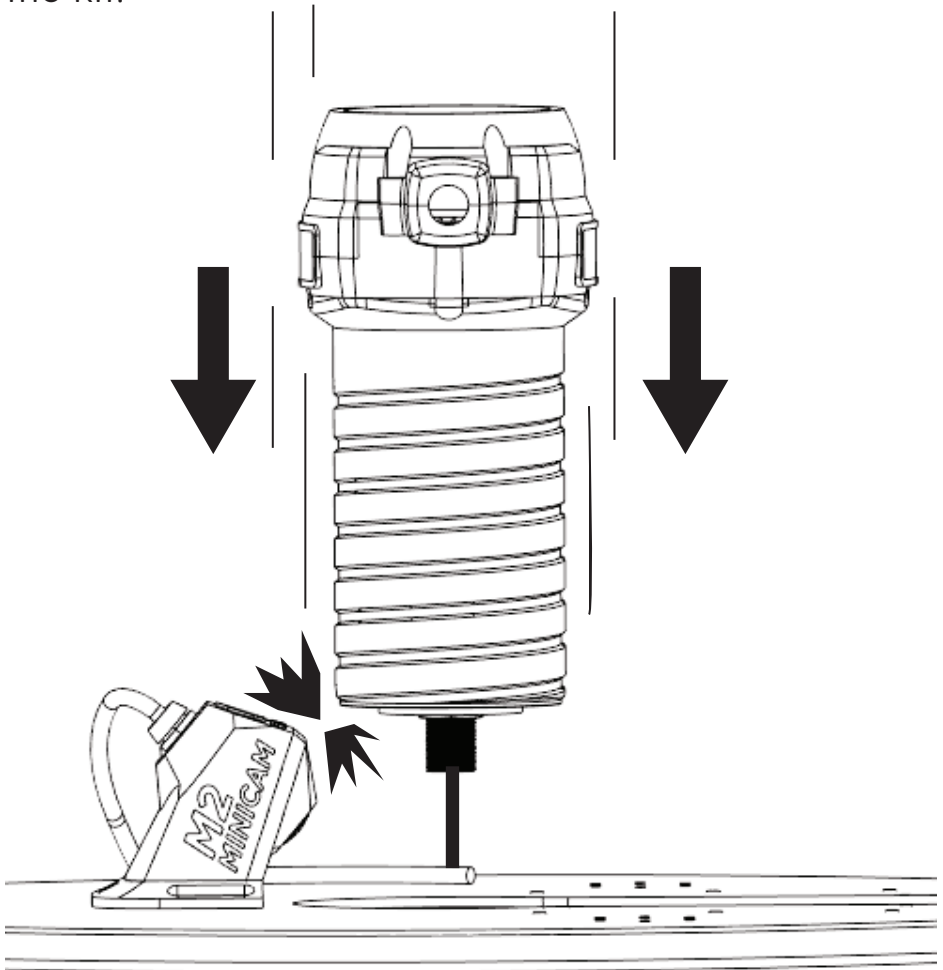
*Pro Tip: you can revolve the camera a few degrees left or right of the center hole to stay out of the way of your wrench as you change bits on your M2 CNC.*

**WARNING: check above your physical camera and ensure your router or any protruding features on your z axis assembly do not crash into your camera when they move up & down.**



**!!DAMAGE TO YOUR CAMERA OR M2 CNC MACHINE MAY OCCUR!!**

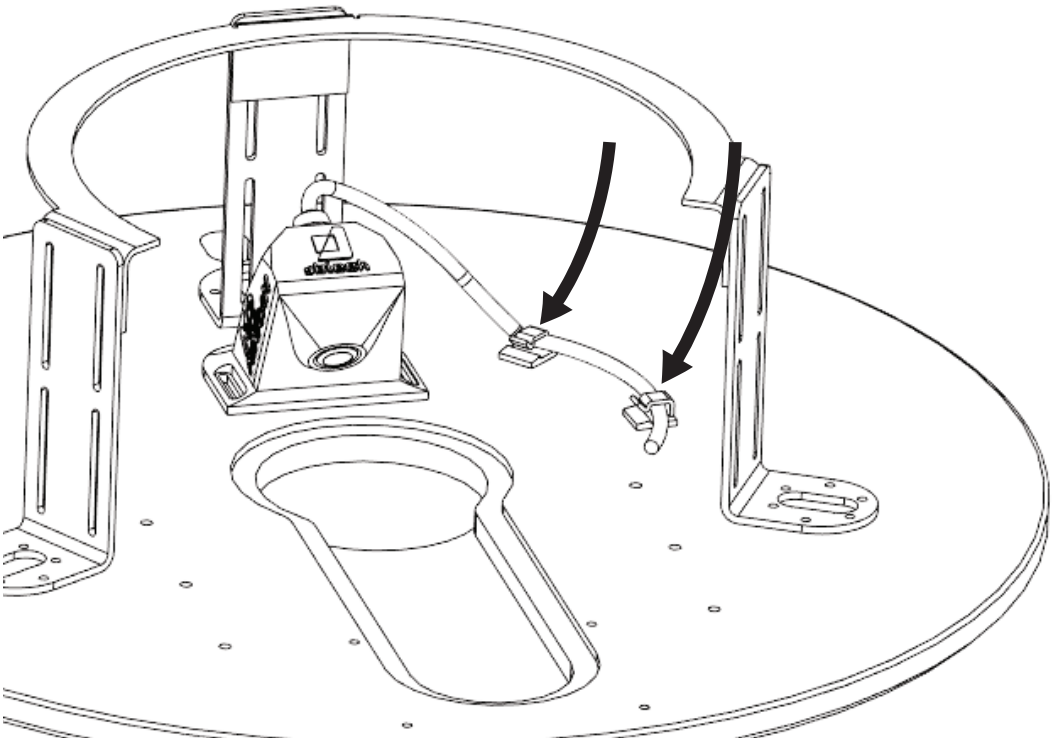
7. Once satisfied with your camera's position & you've ensured the camera is clear of all obstructions and potential objects crashing down on it, use a #1 Philips bit/driver or equivalent bit to screw the camera into place with the provided hardware in the kit.



*Pro Tip: use a dab of hot glue along the edges to hold the camera in its final place while you screw it in. You can then remove the hot glue once dried by peeling it off or using a cloth saturated with some household rubbing alcohol to easily get off stubborn glue*

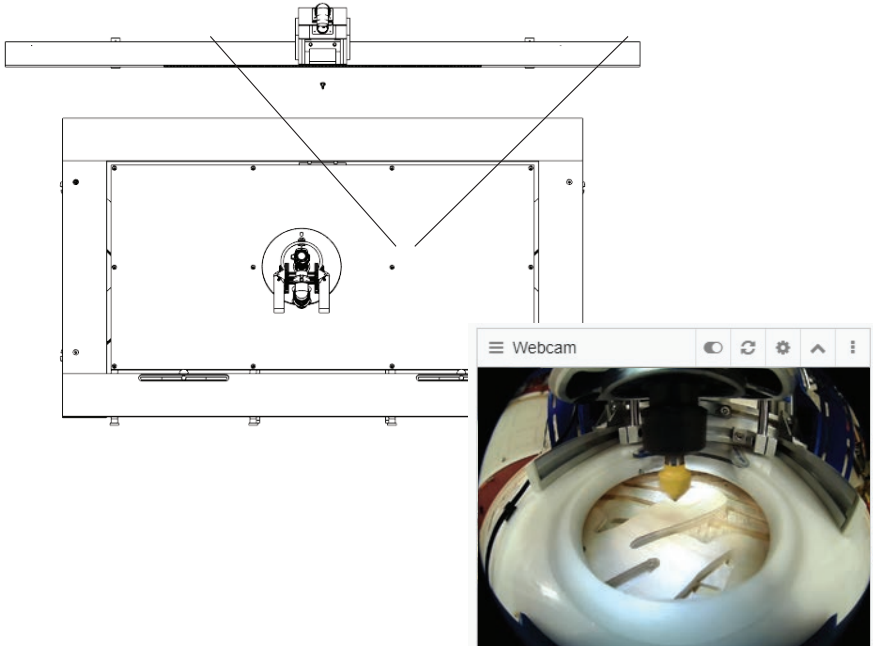
8. Unplug USB from computer (if still plugged in) and Route the cable as you see fit along the sled using the cable retainers provided. Then follow the rest of your M2 wires off the sled and to your computer.

9. Reattach the sled to the chains on the M2 CNC machine & plug in the USB.





10. Your camera feed should now automatically show up in MakerVerse!



**Happy Making!**

Be sure to share your videos with us @makermadecnc!

Need support? We've got your back! You can reach us at [support@makermade.com](mailto:support@makermade.com).

Designed by



**obleek**<sup>TM</sup>  
DESIGN/BUILD

▲ Innovate your space.

in partnership with

 **makermade**

