

# Bladed Sway Bar Cable Kit Installation Notes

#CBLKT.997F

## Kit Contents:

- (1) 9' Push/Pull Cable
- (1) Cable Mounting Bracket
- (2) Cable Rode Ends
- (1) Blade Adjustment Lever
- (1) Blade Unlocking Shim



## **Controller Configuration:**

- The front sway bar will always get stiffer as the lever is moved forward, regardless of which side the control cable is connected to.

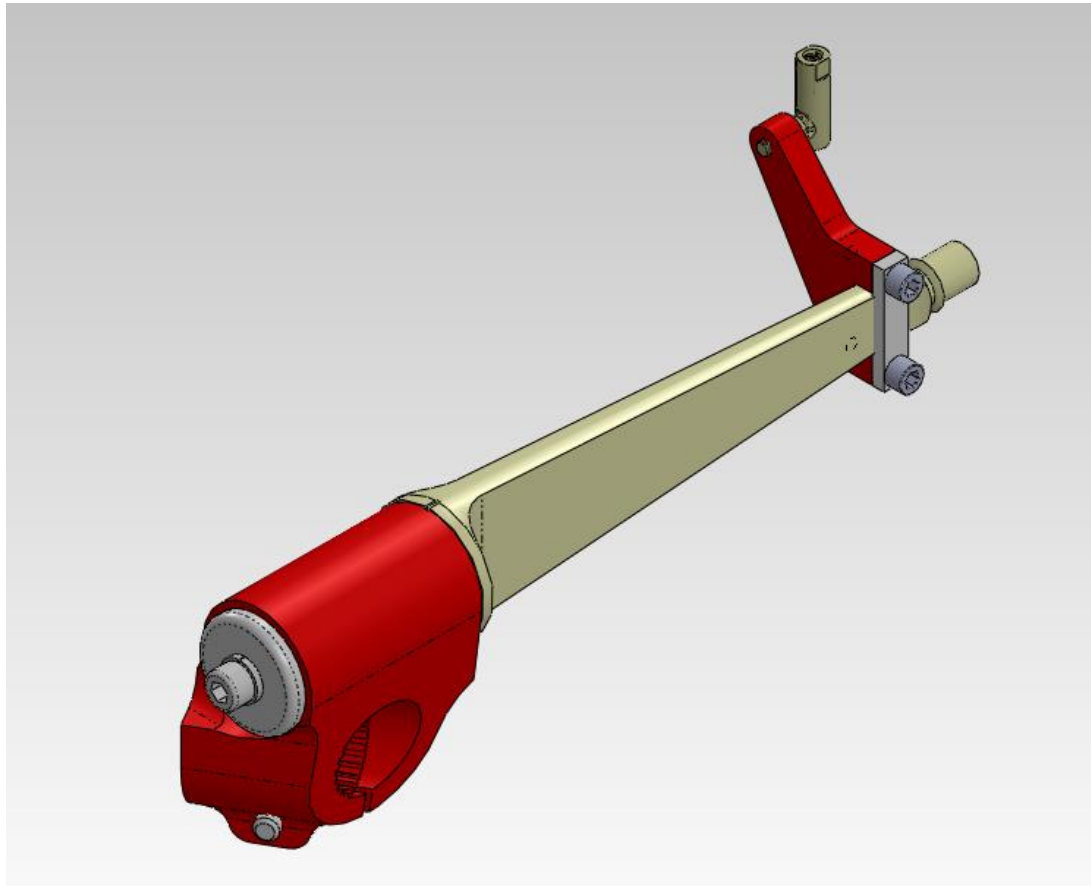


### Drop link / Rod end Installation:

- When installing the drop links onto the sway bar you will notice a red dot on one of the rod ends. Install this rod end on the same side of the sway bar that the adjuster is attached to.
- This rod end has a slightly looser fit and will prevent the sway bar blade/drop link from any binding during adjustment.

### Blade Adjustment Lever Orientation:

- Adjustment Lever should be facing inboard as shown.

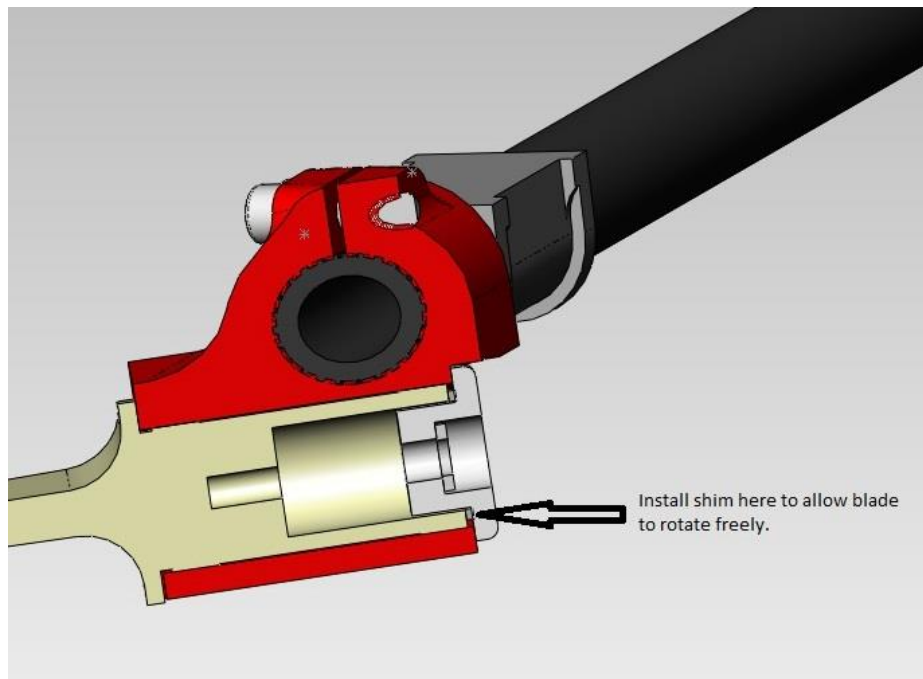


(Right Side Shown)



**Blade Unlocking Shim:**

- In order for the blade to rotate freely when connected to the controller the unlocking shim needs to be inserted as shown.



## Lever Pivot Position:

- For the 997 Front Bladed Sway bar the adjuster cable needs to be attached to the lowest of the 3 mounting holes (as shown).

