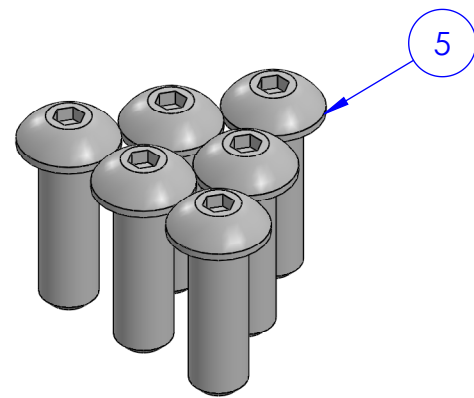
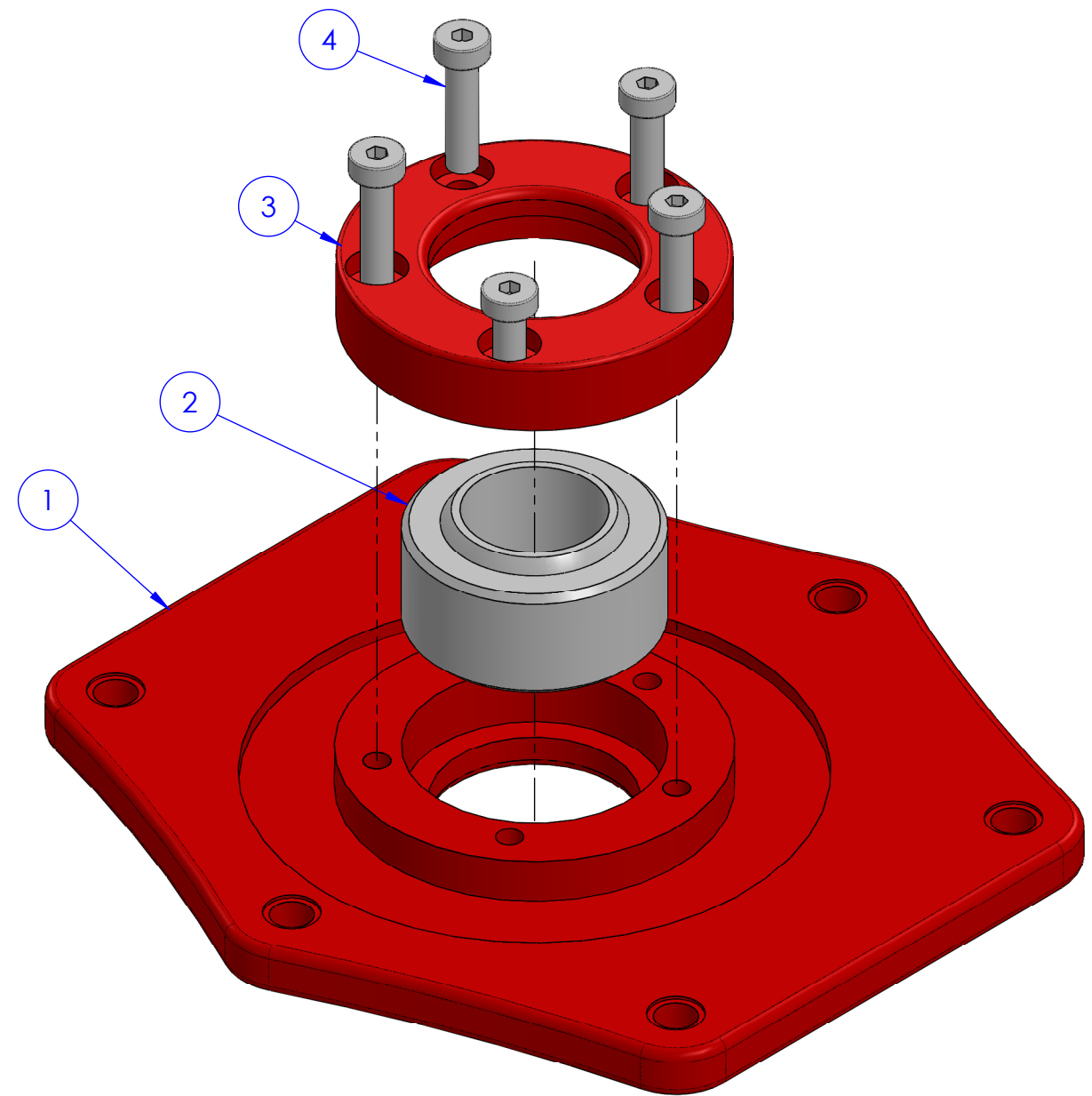
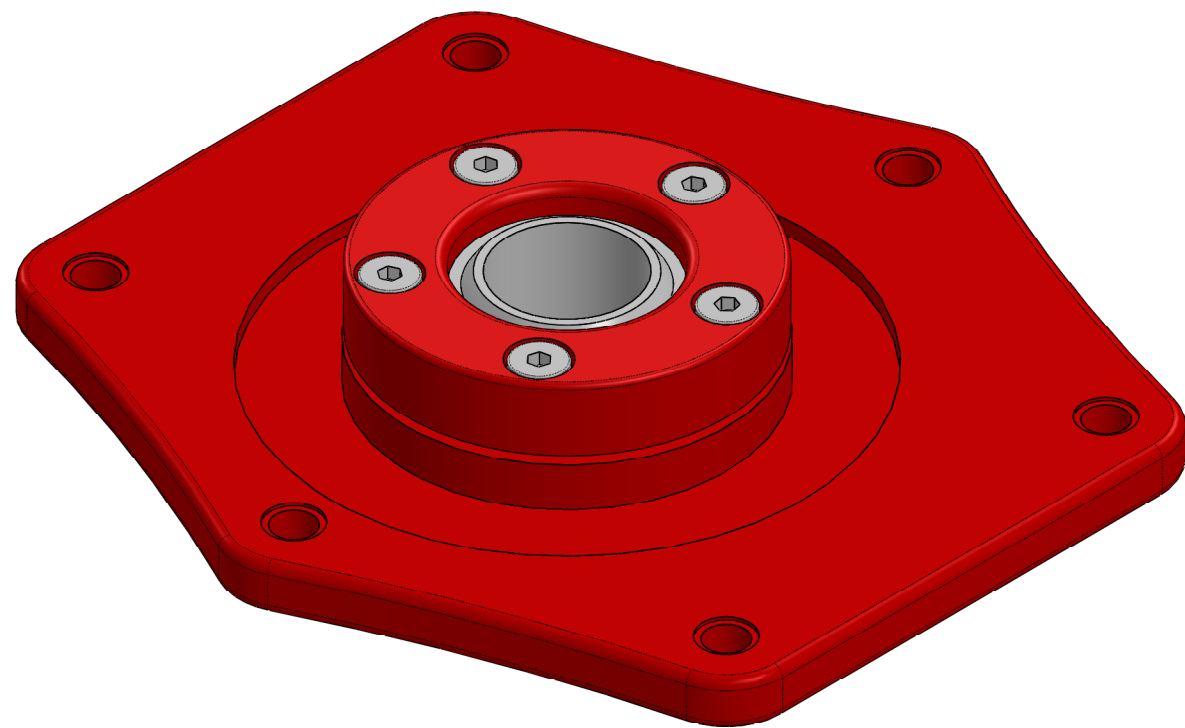
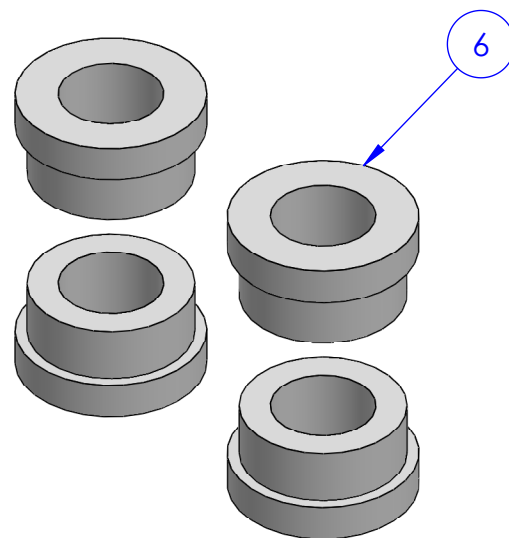


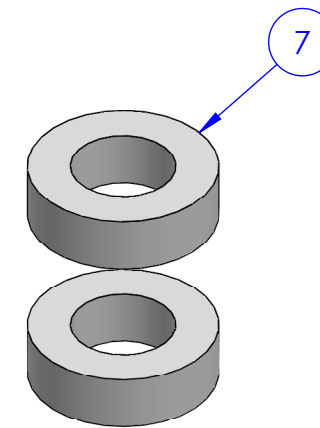
ITEM NO.	PART NUMBER	DESCRIPTION	QTY.	NOTES
1	996FCPHS-03	HOUSING, 996F C-PLATE	2	
2	63195K21	SPHERICAL BEARING, COM-14	2	
3	996RTCP	RETAINER CUP, 996 C-PLT BEARING	2	
4	M5x20LHD	M5-0.8 X 20 LG SOC LOW HD	10	TORQUE TO 45 IN/LBS APPLY BLUE LOCTITE TO THREADS
5	M8X25BTHD	M8-1.25 X 25 BUTTON HEAD	6	TORQUE TO 25 FT/LBS
6	SPCR78-03	SPACER, 996F C-PLT, SHORT	4	
7	SPCR78-13	SPACER, 996F C-PLT, NON GT3	2	



NOTE: BOLT PATTERN DETERMINES HIGH OR LOW CAMBER CONFIGURATION (SHOWN ON NEXT PAGE)



NOTE: SPACER #6 INSTALLED ON ALL CONFIGURATIONS



NOTE: SPACER #7 ONLY INSTALLED ON NON GT3 CONFIGURATIONS

NOTES: UNLESS OTHERWISE SPECIFIED

PROPRIETARY NOTICE
INFORMATION CONTAINED ON THIS DRAWING IS PROPRIETARY TO TARETT ENGINEERING AND MAY NOT BE COPIED, REPRODUCED FROM TARETT ENGINEERING, NOR PARTS MADE THEREFROM WITHOUT WRITTEN PERMISSION

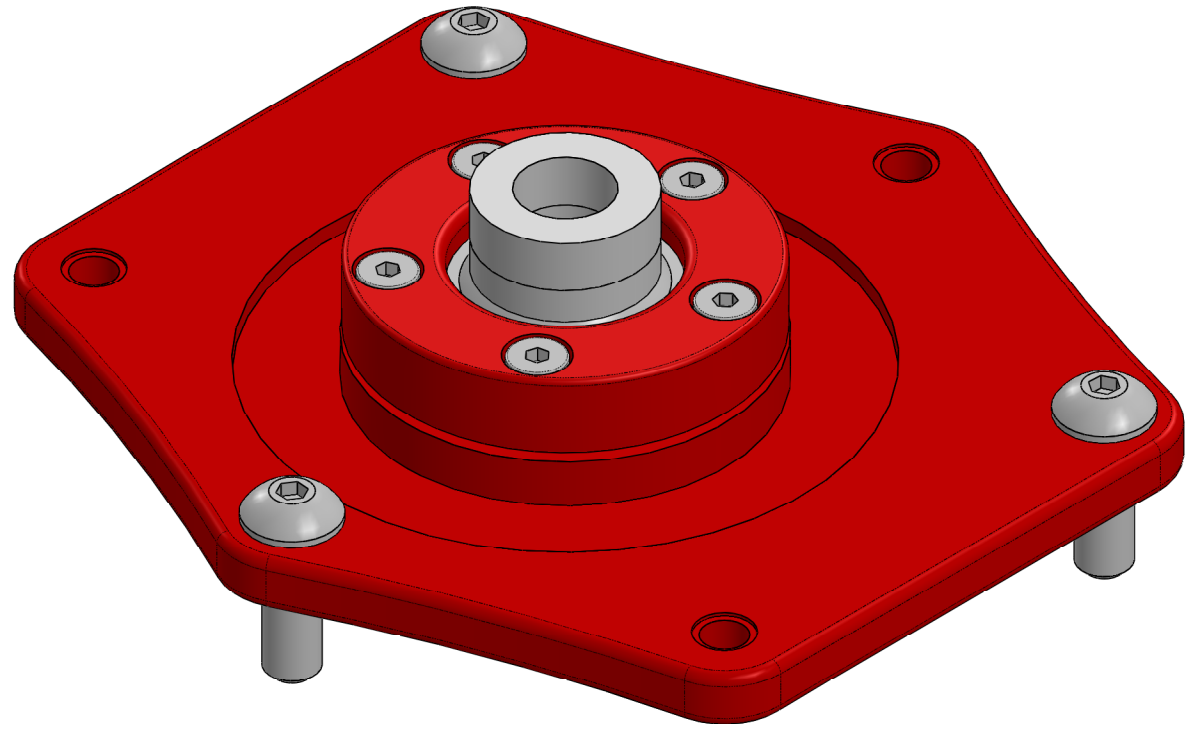
TARETT
ENGINEERING
Competition Suspension Components

13741 DANIELSON ST. STE G
POWAY CA, 92064
Tel: (858) 674-5573
www.Tarett.com

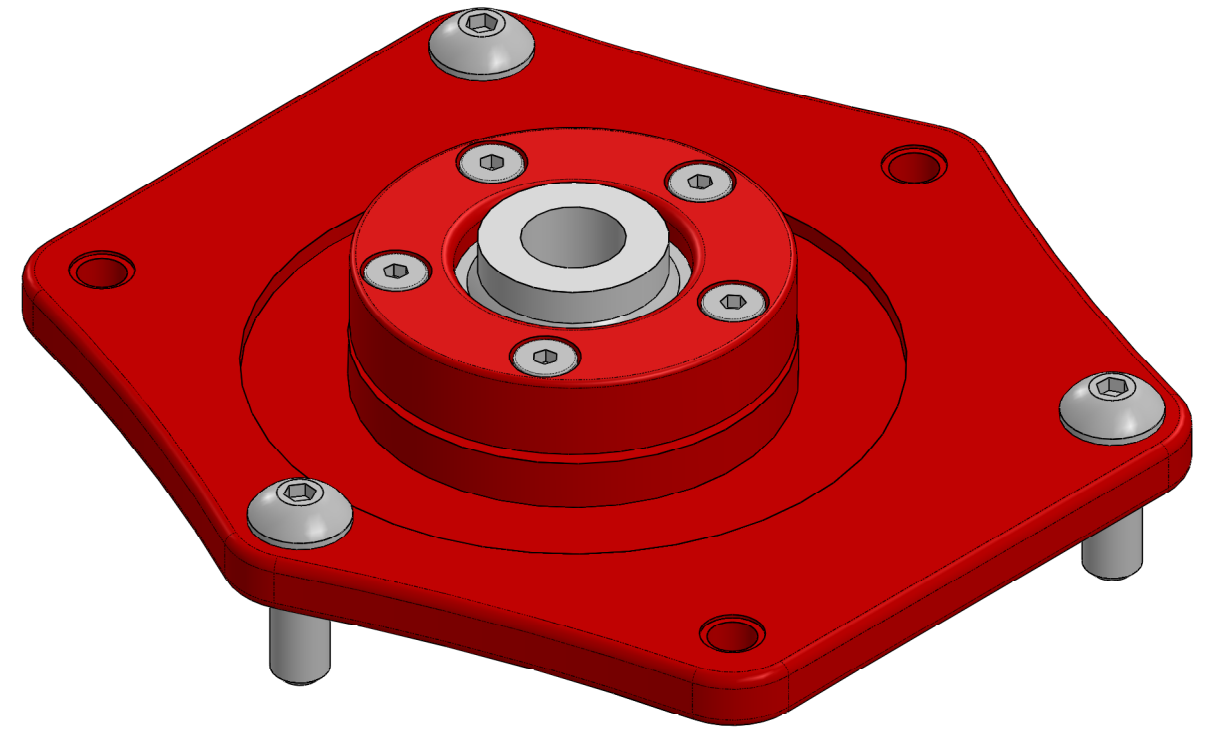
TITLE:
996 FRONT CAMBER PLATE

SIZE B PART NO: 996FSMT REV

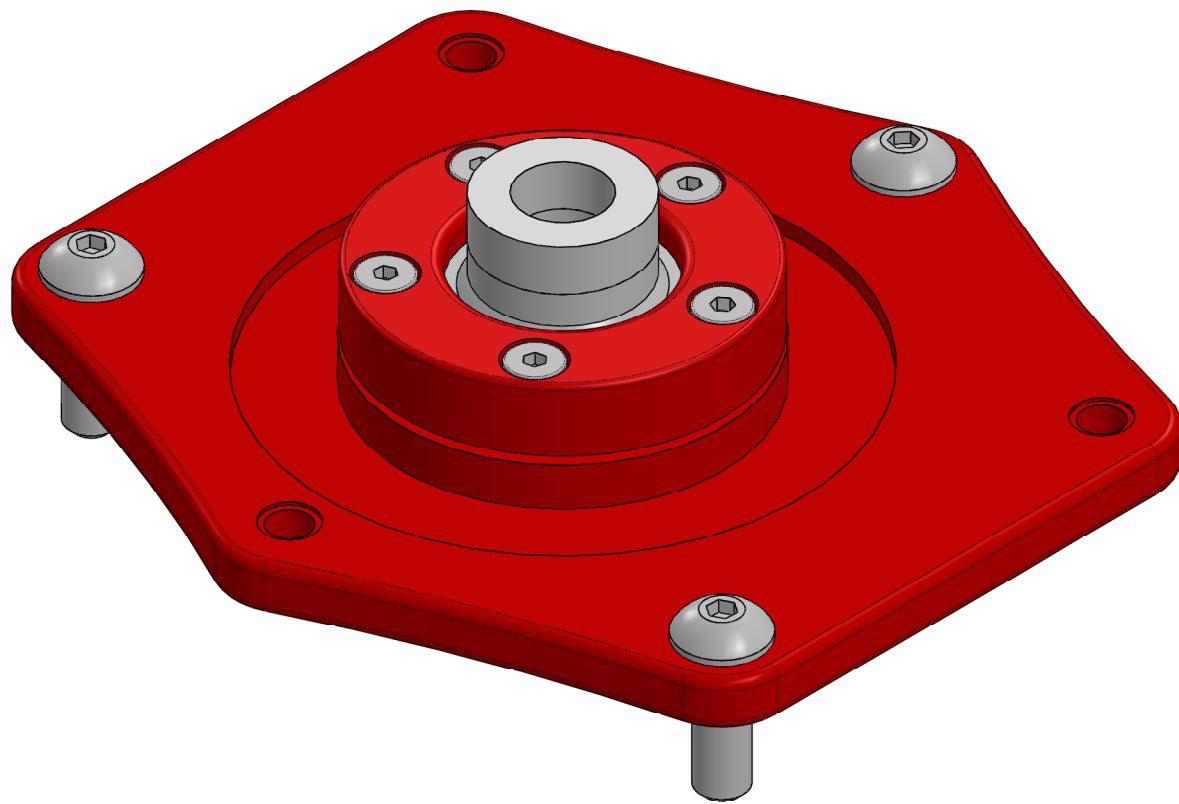
SCALE: N/A SHEET 1 OF 1



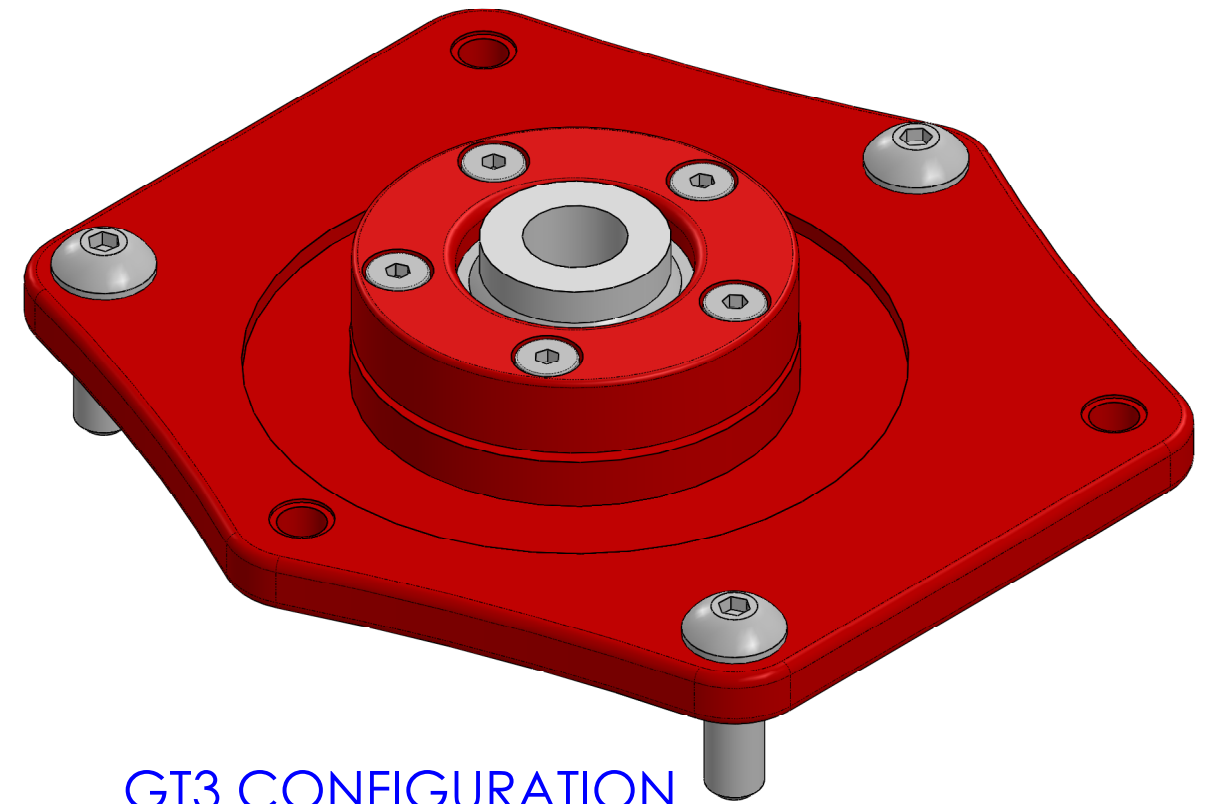
STANDARD CONFIGURATION (NON GT3)
- HIGH CAMBER
- INCLUDE SPACER #7 AS SHOWN



GT3 CONFIGURATION
- HIGH CAMBER
- SPACER 7 NOT INSTALLED



STANDARD CONFIGURATION (NON GT3)
- LOW CAMBER
- INCLUDE SPACER #7 AS SHOWN



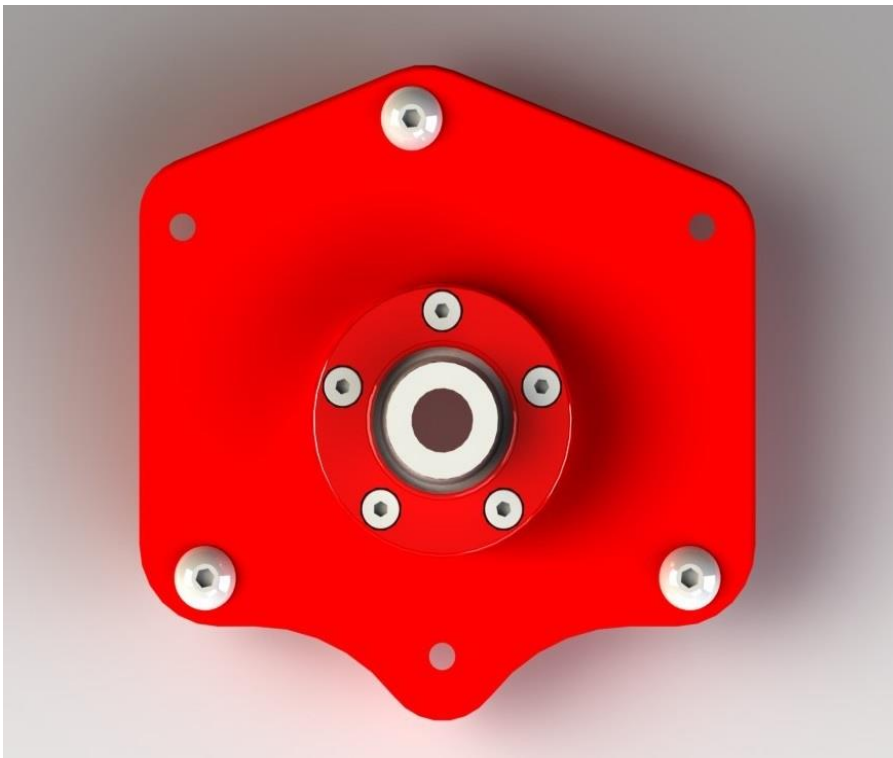
GT3 CONFIGURATION
- LOW CAMBER
- SPACER 7 NOT INSTALLED

996/997/986/987 Front Camber Plate

Installation Notes



- These camber plates can be installed in two configurations, standard or high camber.
- By default they come pre-assembled in the high camber configuration.

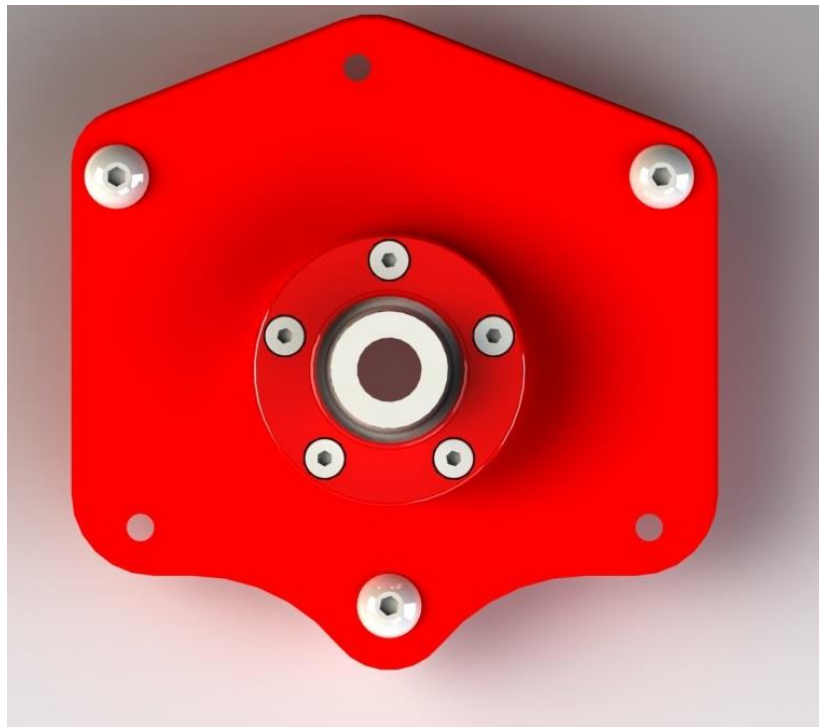


Standard

The standard configuration positions the shock mount in the same place as the factory mount – allowing you to retain the stock camber adjustment range while replacing the compliant rubber mount with a precision monoball.

High Camber

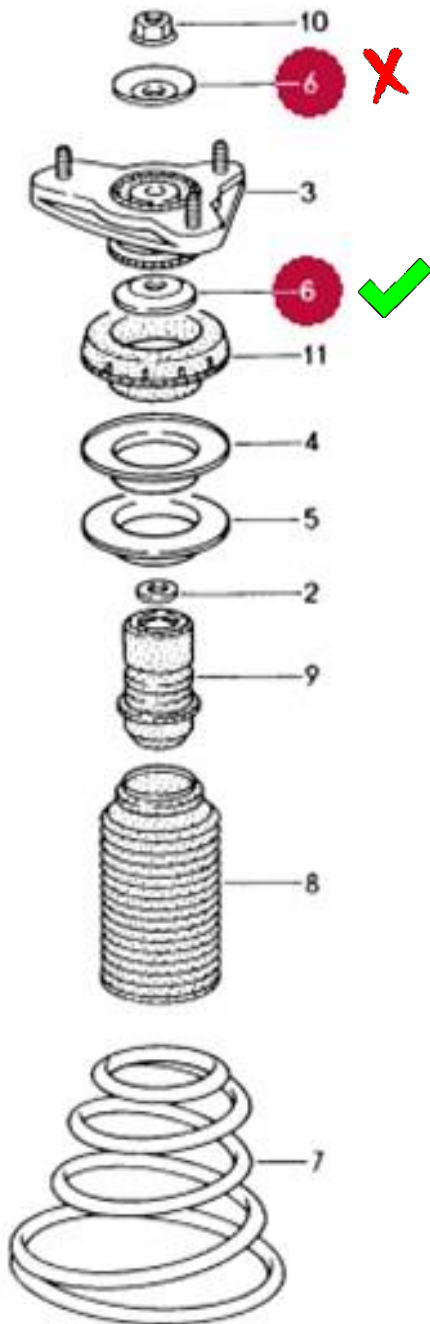
The High camber setting repositions the monoball allowing for an additional 1.1 degrees of negative camber.



- These camber plates are designed to work with either the stock shocks or aftermarket coil overs.

OEM Struts/Springs

- When using these camber plates with the stock shocks and springs, you must re-use all of the following factory components EXCEPT for the Large TOP Washer (#6 shown with red X).



- Installed on OEM Strut/Spring - Note the factory thrust bearing.

Bilstein PSS9/PSS10

- When using these camber plates with Bilstein PSS9/10 Shocks **you must reuse the factory thrust bearing!**

- Installed on a 996 with PSS9/PSS10

-Note the factory thrust bearing positioned between the spring adaptor and the Camber Plate



- Installed on a 986 with PSS9's
 - Note the factory thrust bearing between the spring and Camber Plate.

Race Shocks – (JRZ, Moton, MCS, Ohlins, etc.)

- When using these camber plates with race style shocks none of the factory components will be reused.
- The upper spring seat mounts directly to the lower bushing of the camber plate.



Torque Specifications

- M8 Mounting Bolts - 25 ft/lbs*
- OEM Shock Shaft Bolt (M14) - 60 ft/lbs

*Use blue thread locker.