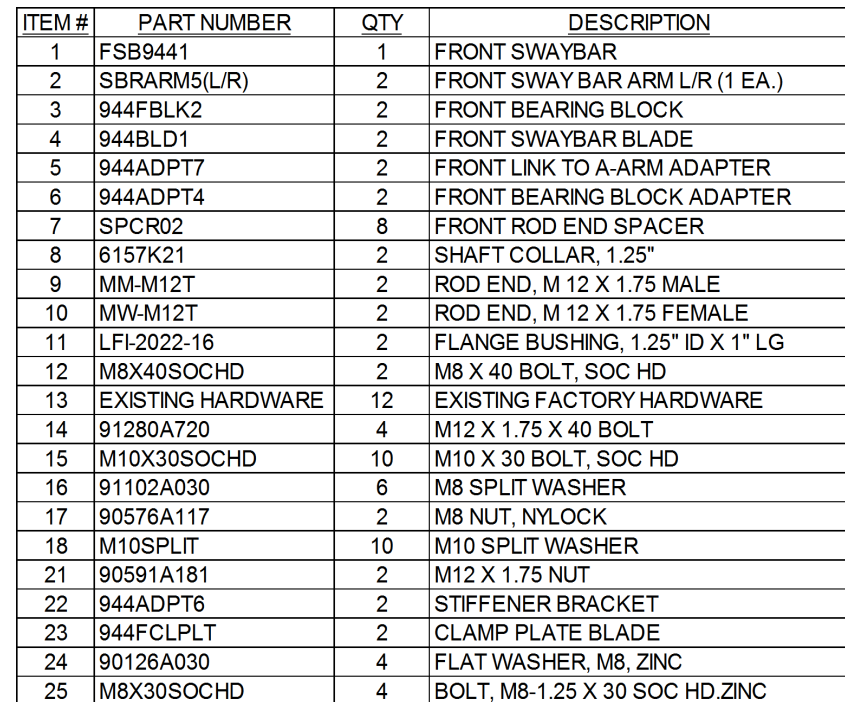


#944FSBA (Driver Side)



SAFETY WARNING! The factory 944 front control arms made before 1987 are known to fail catastrophically, even under street driving conditions. Porsche redesigned them in 1987 to resolve the problem. Using the earlier arms in competition and/or with other competition components will likely increase the stress on them and further increase the chances of their failure. We highly recommend either replacing them with a reliable aftermarket design, or having them properly reinforced, or inspecting them for cracks before EVERY race session.