



ASSEMBLY INSTRUCTIONS:

Replacement of Undermount Slides.

Step 1 Notes:

To remove the drawer, pull the drawer towards you until it has reached full extension away from the cabinet.

On the underside of the drawer you will see the pair of metal drawer slides.

Locate the pair of green tabs with pins (A).

They are located near the drawer front and face each other.

One tab is located on each slide, approximately 1 1/2" back from the front of the slide.

Step 2 Notes:

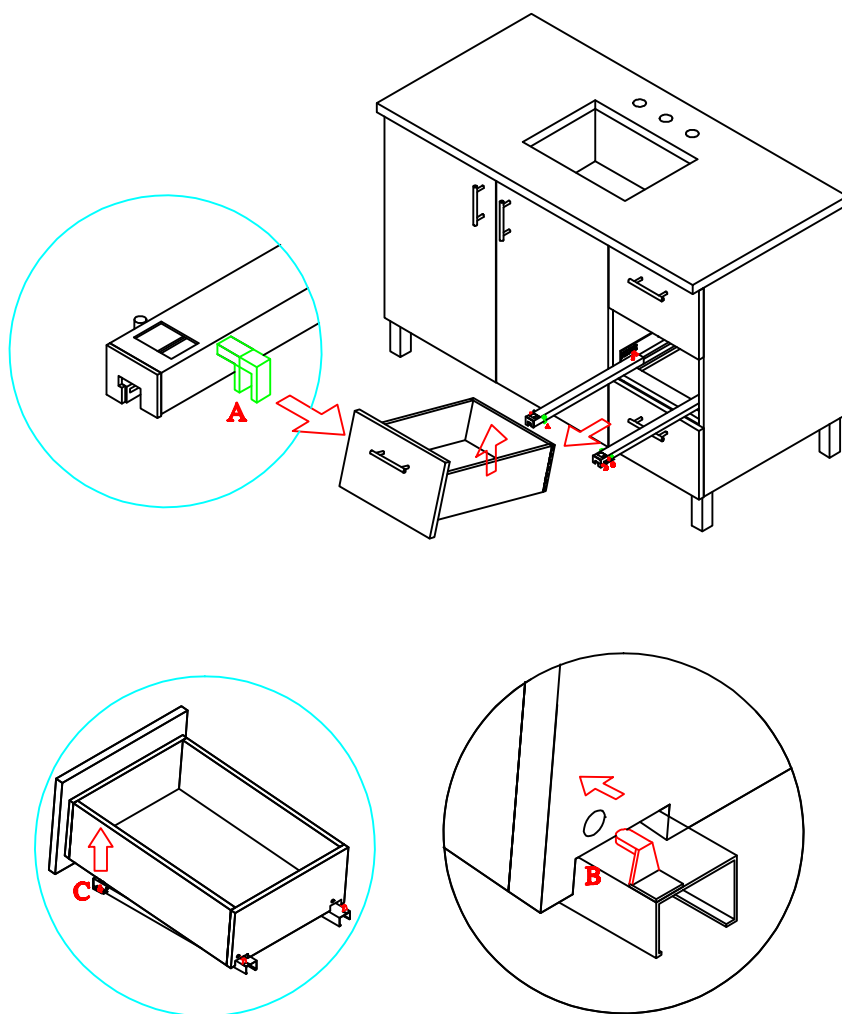
Once you have located the tabs, slowly and gently move them toward each other.

This will unlock the front tab which holds the drawers in place.

Once the tabs are "unlocked" you may gently lift the drawer away from the slides.

Note: there is a pair of pins (B) on top of the slides toward the back of the drawer.

You will need to take care to slowly lift the drawer box up and away from these back pins.



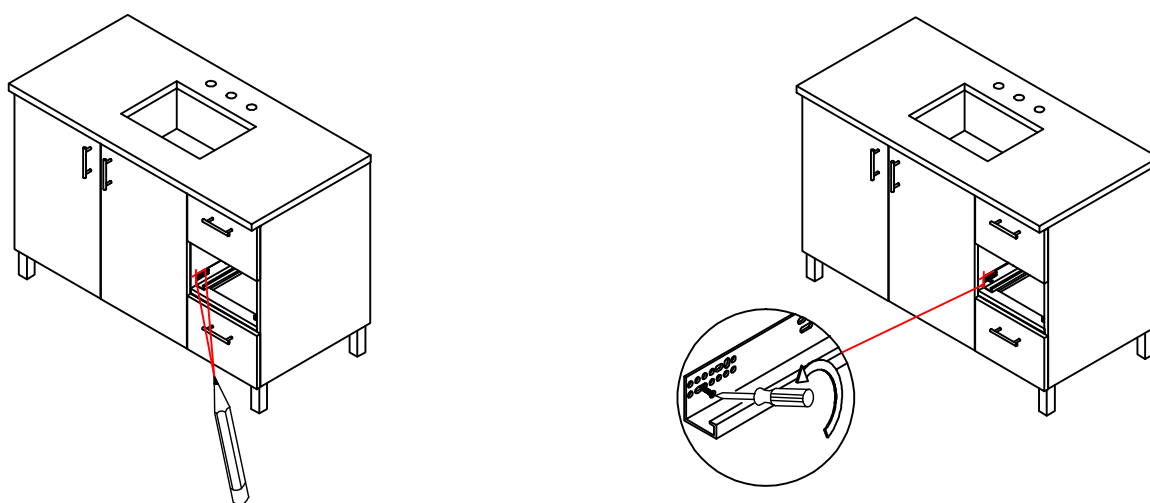


ASSEMBLY INSTRUCTIONS:

Replacement of Undermount Slides.

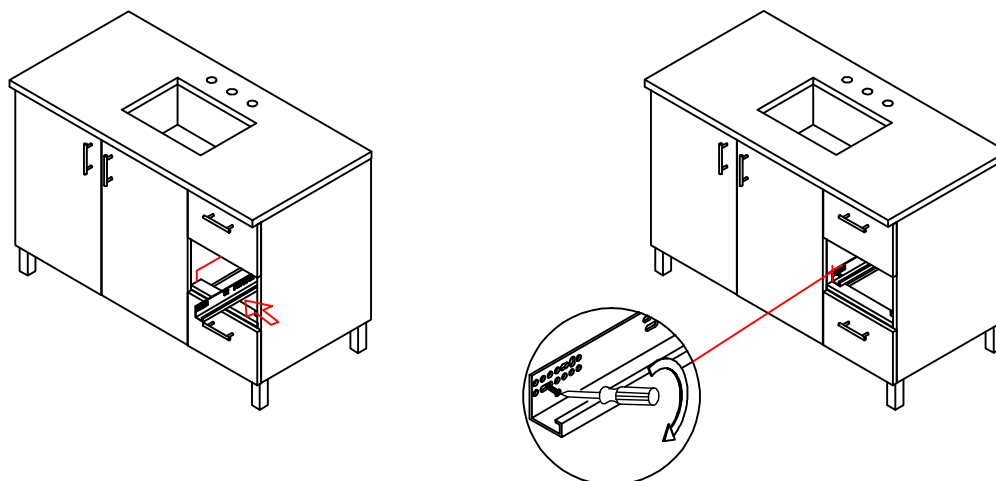
Step 3 Notes:

Using a pencil, draw lines on the front and top of the old slides before you remove them. Apply only very slight pressure when drawing the lines, to prevent damage to the drawer. Please keep these screws. They will be used to attach the new slides.



Step 4 Notes:

Align the corner of the new slides with the lines. Use the original screws to attach the new slides to the vanity cabinet.





ASSEMBLY INSTRUCTIONS:

Replacement of Undermount Slides.

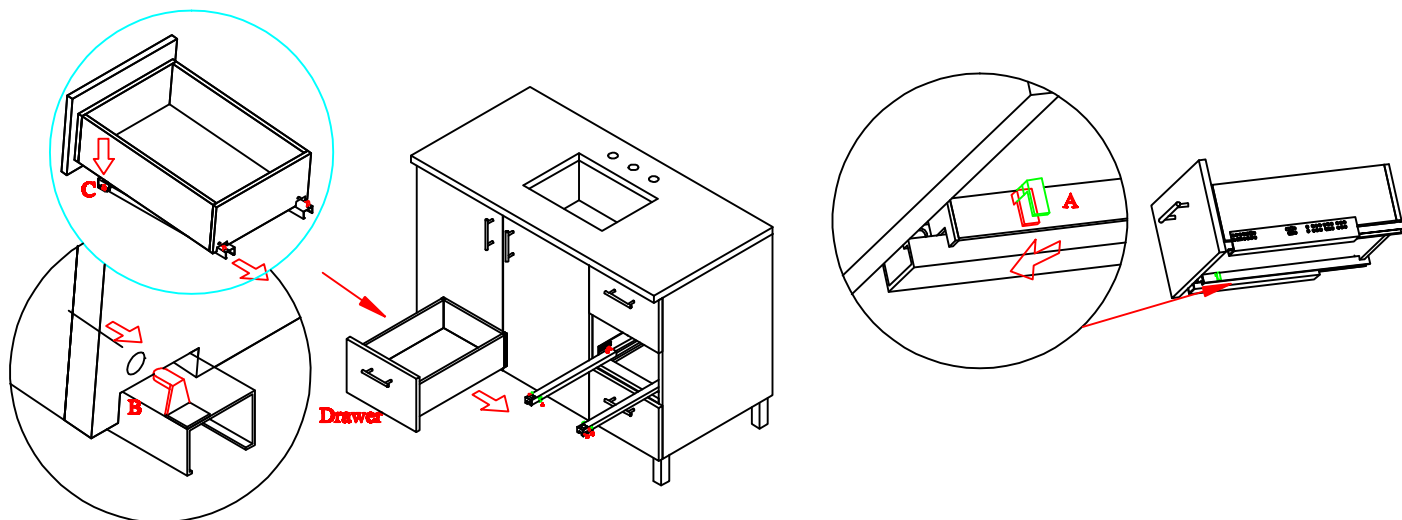
Step 5 Notes:

To insert the drawers, please reverse the order of the notes on page 1.

Fully extend the drawer slides away from the cabinet and slowly and gently place the drawer box onto the extended slides.

Notes: If you look on the bottom of the drawer, you will see the pre-drilled holes toward the back of the drawer box.

Once you have located these holes, please follow the notes in Step 2, and then review Step 1 Notes to reinsert the pins (B) & (A) & (C) and tabs to lock the drawer into the correct position on the slides.



Step 6 Notes:

Please turn the regulating wheels (C) and (D) to adjust the drawer position to match the spacing (alignment) of the other drawers and doors on the cabinet.

