

**ASSEMBLY INSTRUCTIONS:****Replacement of Drawers Front with Undermount Slides.****Step 1 Notes:**

To remove the drawer, pull the drawer towards you until it has reached full extension away from the cabinet.

On the underside of the drawer you will see the pair of metal drawer slides.

Locate the pair of green tabs with pins (A).

They are located near the drawer front and face each other.

One tab is located on each slide, approximately 1 1/2" back from the front of the slide.

Step 2 Notes:

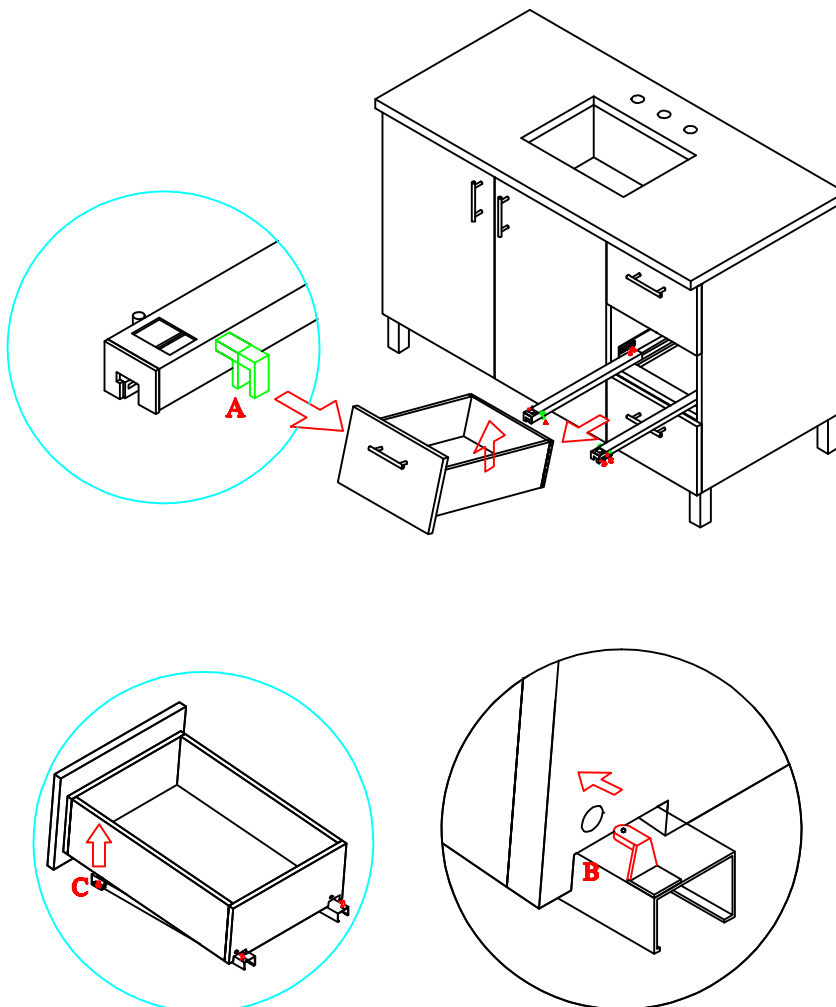
Once you have located the tabs, slowly and gently move them toward each other.

This will unlock the front tab which holds the drawers in place.

Once the tabs are "unlocked" you may gently lift the drawer away from the slides.

Note: there is a pair of pins (B) on top of the slides toward the back of the drawer.

You will need to take care to slowly lift the drawer box up and away from these back pins.





ASSEMBLY INSTRUCTIONS:

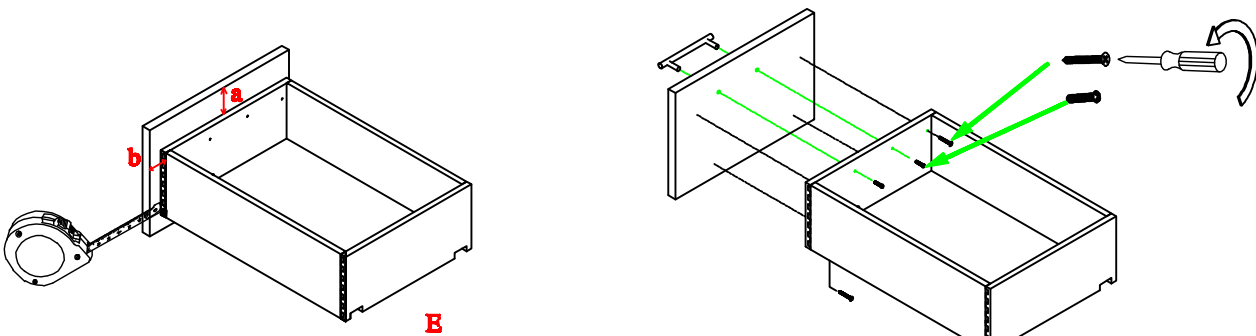
Replacement of Drawers Front with Undermount Slides.

Step 3 Notes:

Measure the position of the drawer front where it is attached to the drawer box. Refer to figure (E) which shows the key dimensions to measure **a** and **b**. Record these dimensions.

Step 4 Notes:

Remove the drawer front from the drawer box. Then remove the decorative hardware (knobs or pulls) from the drawer front. Please keep these screws. They will be used to attach the new drawer front.

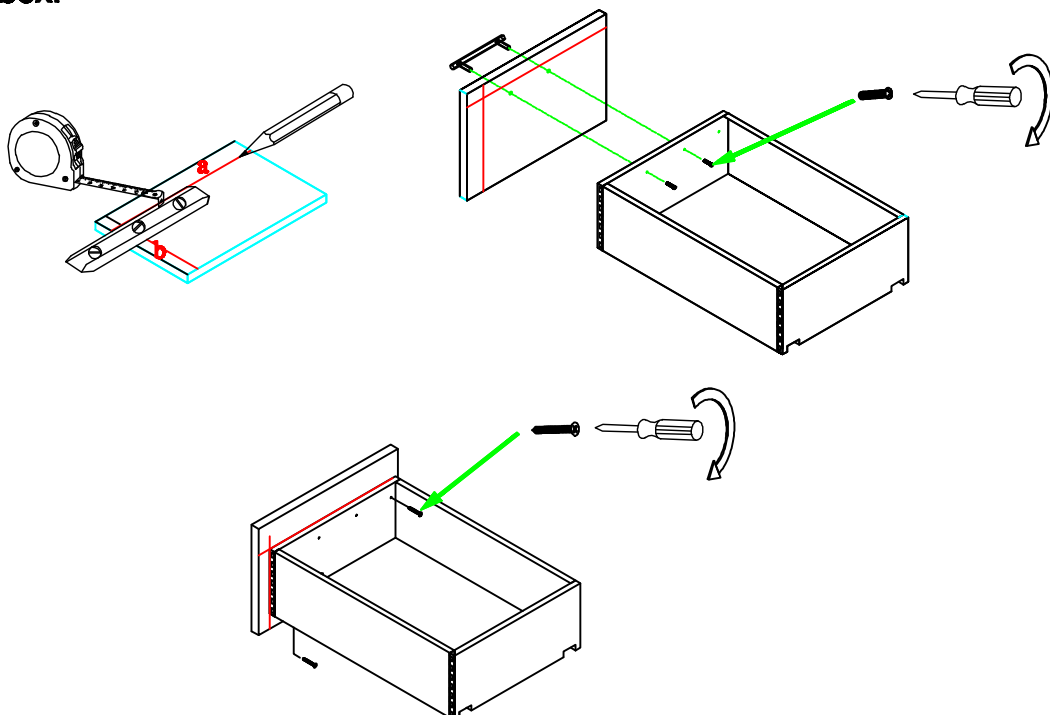


Step 5 Notes:

Using a pencil, draw two lines on the backside of the new drawer front. Apply only very slight pressure when drawing the lines, to prevent damage the drawer.

Step 6 Notes:

Attach the decorative hardware (knobs or pulls) to the new drawer front. Next, align the corner of the drawer box with the corner created by pencil lines **a** and **b** on the backside of the drawer front. Use the original screws to attach the new drawer front to the drawer box.



ASSEMBLY INSTRUCTIONS:

Replacement of Drawers Front with Undermount Slides.

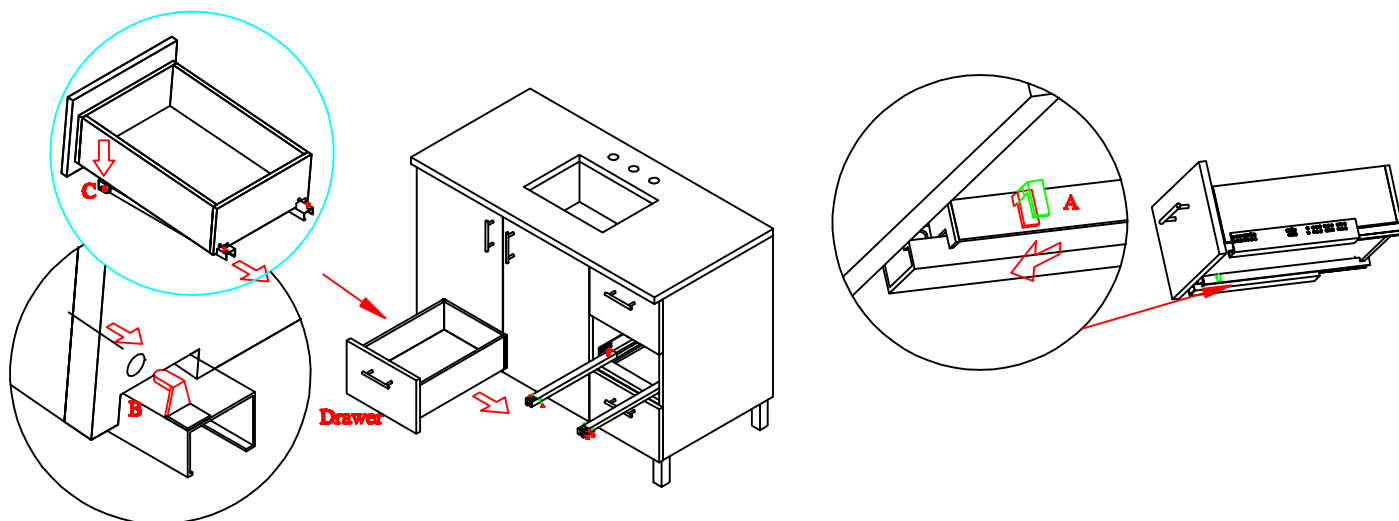
Step 7 Notes:

To insert the drawers, please reverse the order of the notes on page 1.

Fully extend the drawer slides away from the cabinet and slowly and gently place the drawer box onto the extended slides.

Notes: If you look on the bottom of the drawer, you will see the pre-drilled holes toward the back of the drawer box.

Once you have located these holes, please follow the notes in Step 2, and then review Step 1 Notes to reinsert the pins (B) & (A) & (C) and tabs to lock the drawer into the correct position on the slides.



Step 8 Notes:

Please turn the regulating wheels (C) and (D) to adjust the drawer position to match the spacing (alignment) of the other drawers and doors on the cabinet.

