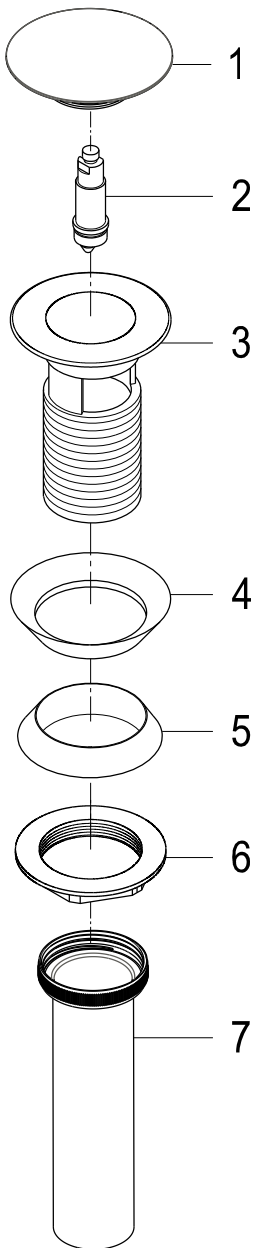


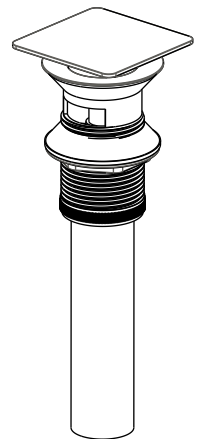
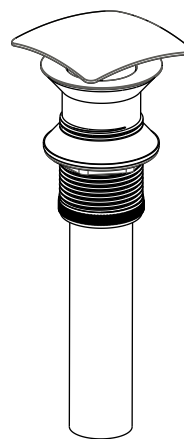
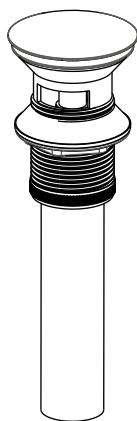
# INSTALLATION INSTRUCTIONS

## FOR POP UP DRAINERS WITH OR WITHOUT OVERFLOW

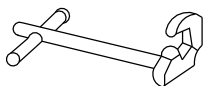


### INSTALLATION:

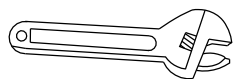
1. Remove drain body(3) from Tailpiece(7) then remove rubber washer(4), rubber gasket(5), and metal nut(6) from drain body.
2. Insert drain body(3) and rubber washer(4) through the drain opening at the top of the sink.
3. Insert rubber gasket(5) onto the drain body and then tighten the metal nut(6) on the drain body to push rubber gasket(5) up against the bottom of drain opening. Tighten the nut with slip-joint pliers.
4. Apply Teflon tape on both tailpiece thread connection and drain body.
5. Turns handles on faucet to the full on position and inspect to insure that there is no leaking underneath lavatory.



### TOOLS MAY NEED:



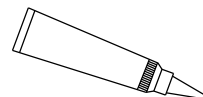
Basin Wrench



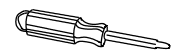
Adjustable Wrench



Teflon Tape



Silicone Sealant



Screwdriver