

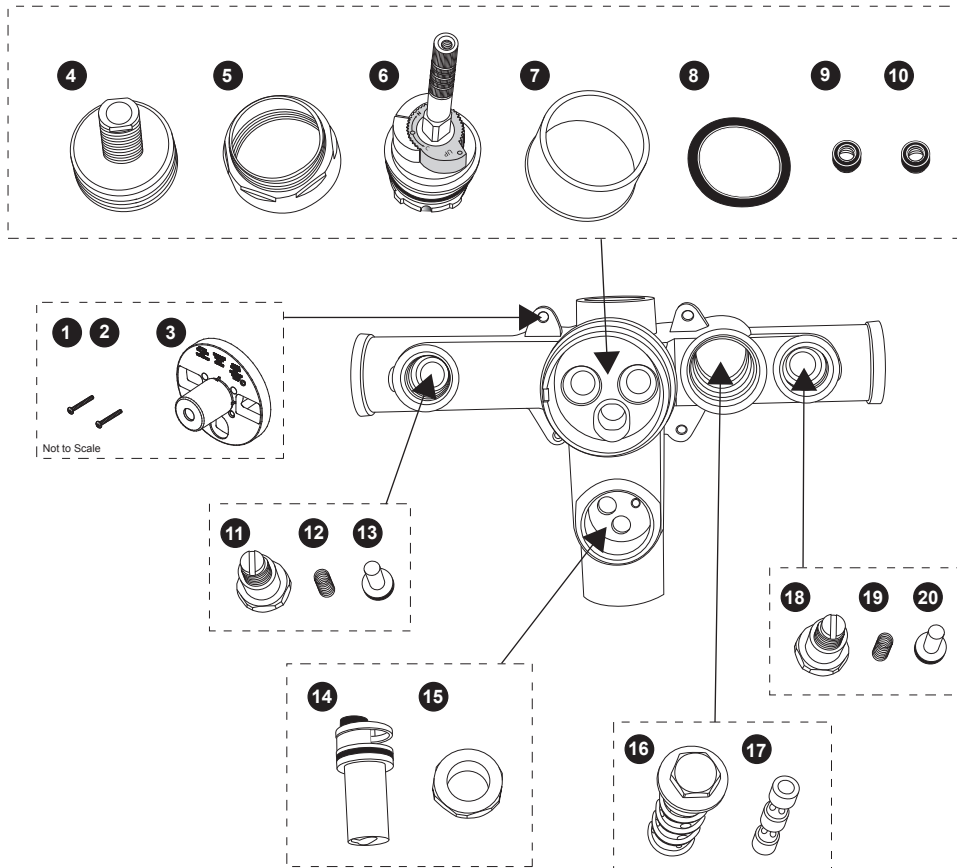


Warning

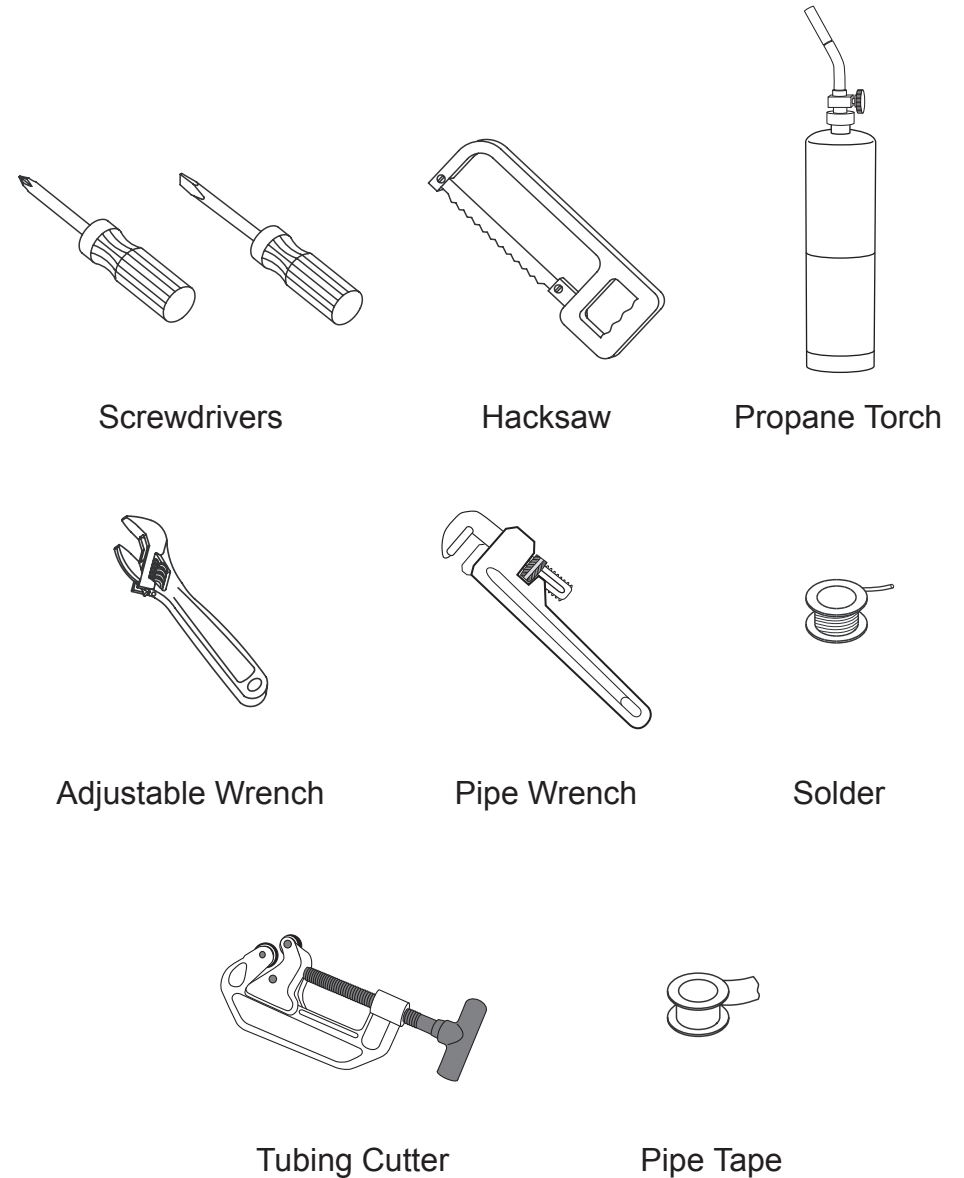
If using solder for the installation of the pressure balance valve, all chrome parts, plastic parts, rubber seals & O-rings, and metal springs must be removed before heating. Other wise, damage to these parts will void the warranty.

Before Soldering

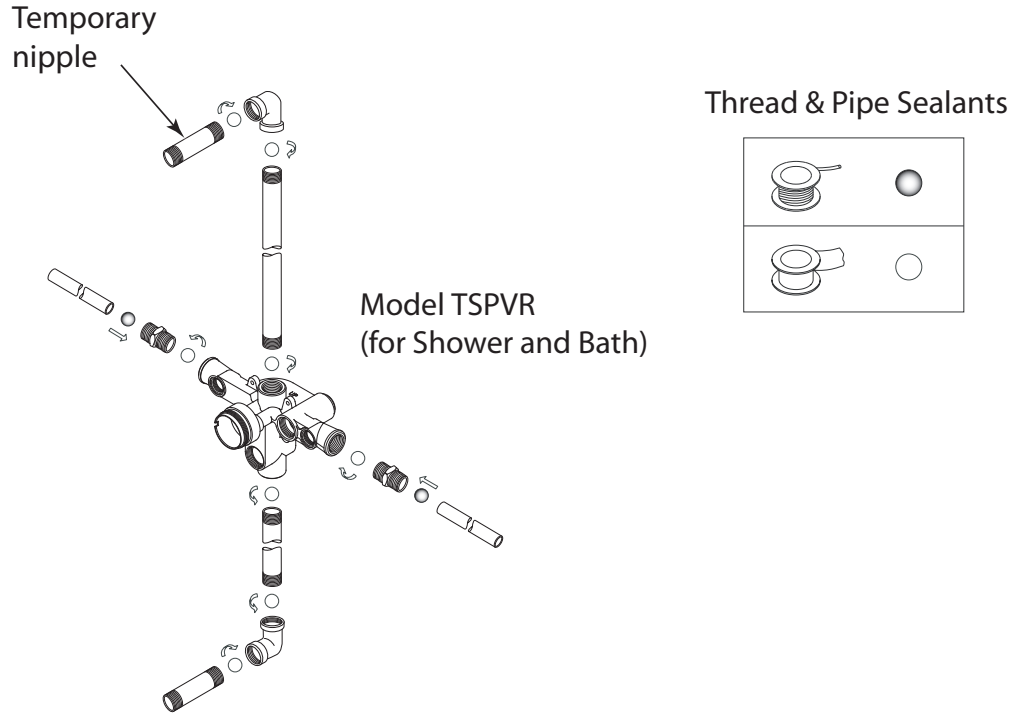
Check to make sure that you remove the following parts (1 to 20) from the pressure balance valve. For the TSPTR model, parts (14 & 15) will not be present.



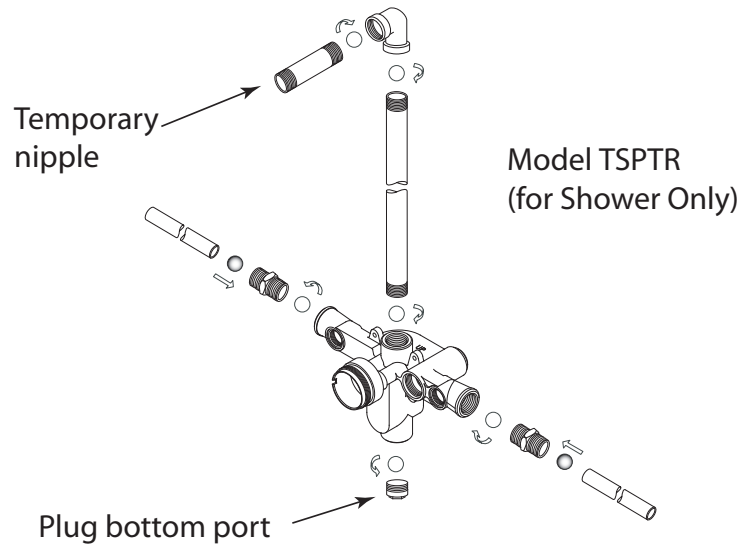
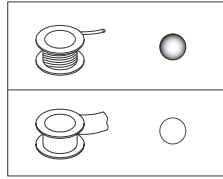
Tools You Will Need



How to Assemble

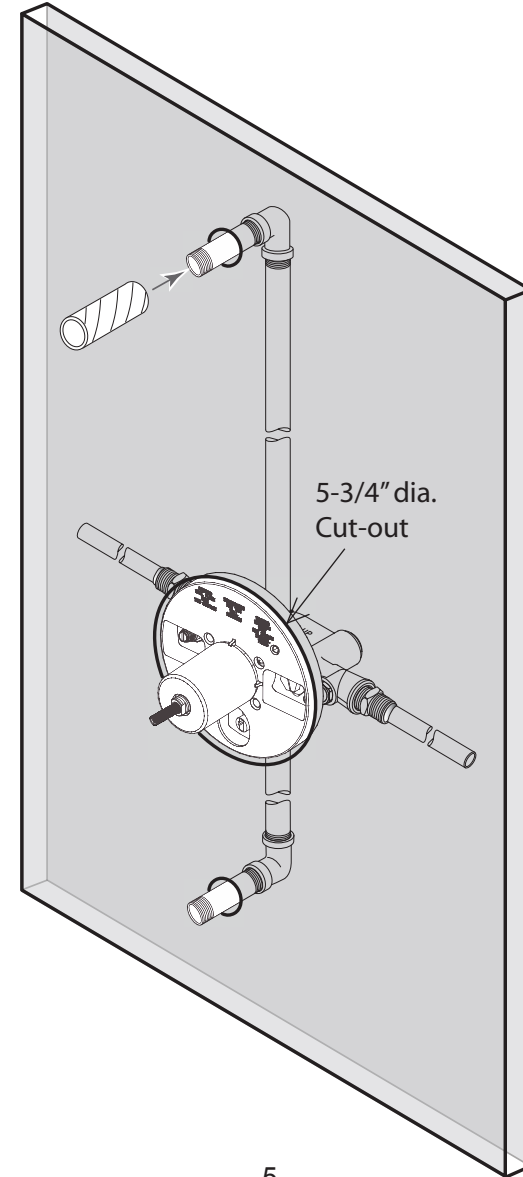


Thread & Pipe Sealants



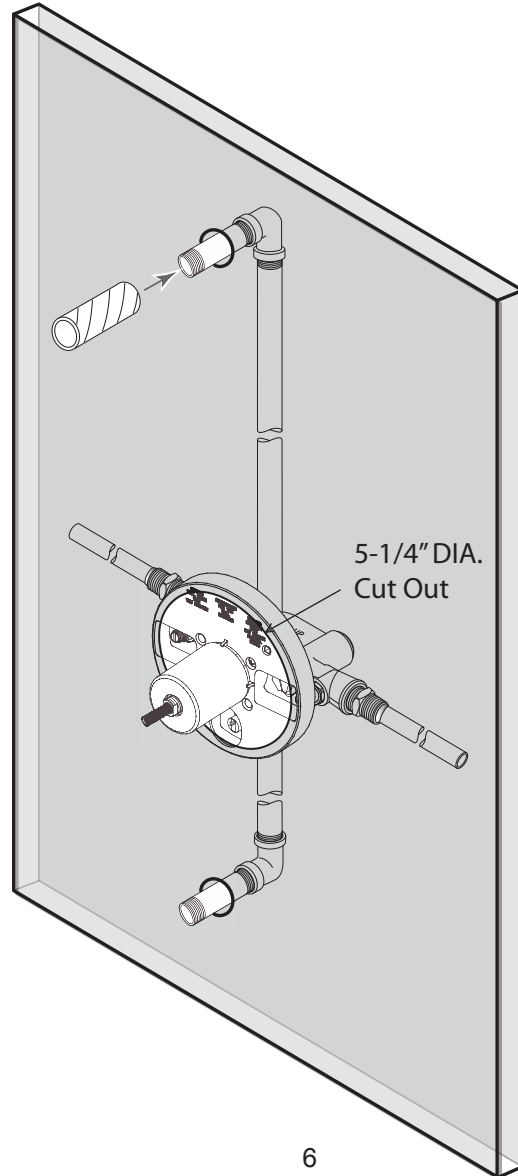
Standard Wall Installations

Used with installations for tile, marble, or custom walls. Before the cement board is installed, be sure to leave the carboard tube on the shower head nipple. This will indicate the size of the hole needed in the cement board and finished wall for installing the shower head arm.



Thin Wall Installations

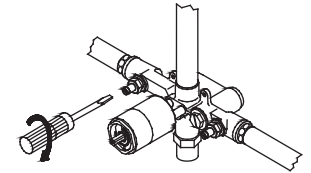
Used with installations for Fiberglass Reinforced Plastic (FRP) walls. The face plate will reinforce the installation by contacting the back of the cement board. Before the cement board is installed, be sure to leave the cardboard tube on the shower head nipple. This will indicate the size of the hole needed in the cement board and the finished wall to install the shower head arm.



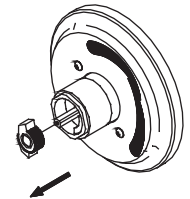
Adjusting Temperature Limiting Device

CAUTION: Risk of personal injury. The water temperature should never be set above 120° F (49° C).

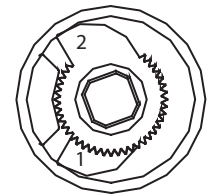
1. Turn off water supply from shut-off valve with flat screwdriver.



2. Remove the chrome plate hub to expose the limiting device.



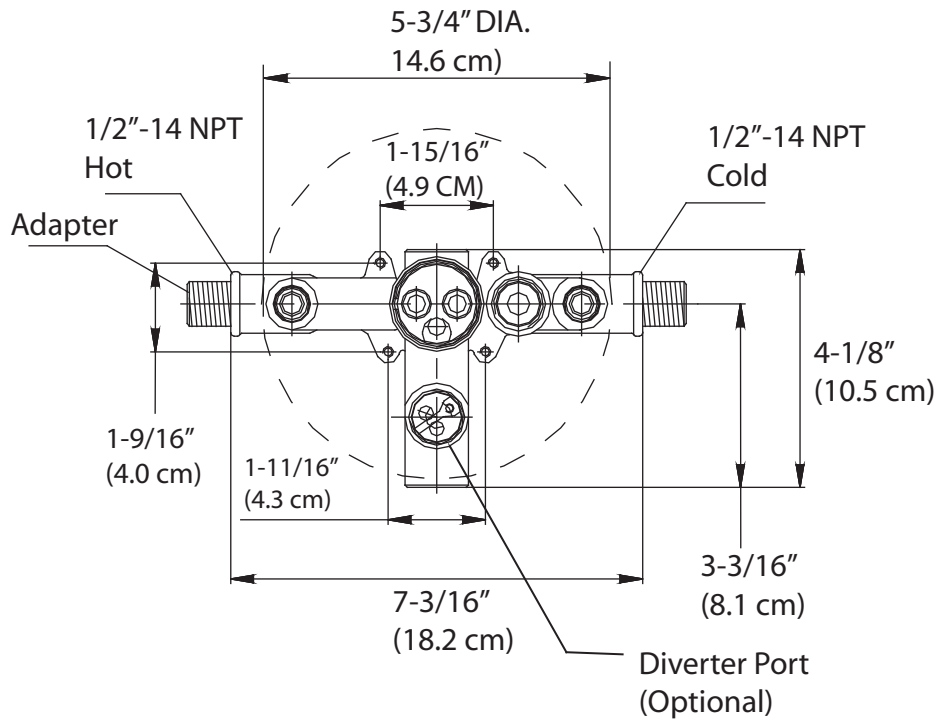
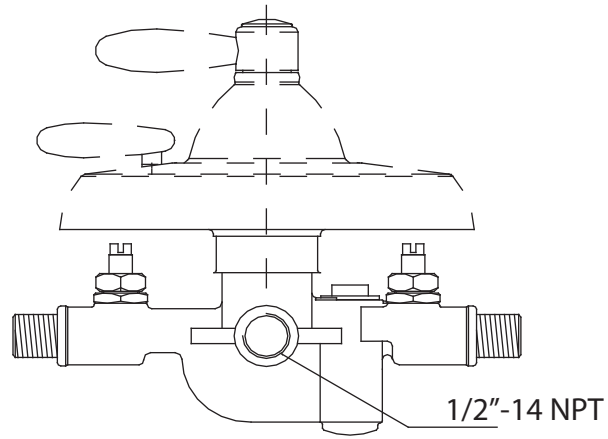
3. The temperature limiting device is set to maximum hot water temperature. To adjust temperature, remove cam 2 and rotate counter-clockwise to reduce hot water temperature.



4. Re-install the hub. Open shut-off valve. Run the water at full open for 1 minute. Check water temperature with thermometer.

5. Repeat steps 1-4 until desired maximum water temperature is reached.

Rough-in



Cardboard tube

Do not break off until ready to install trim

