

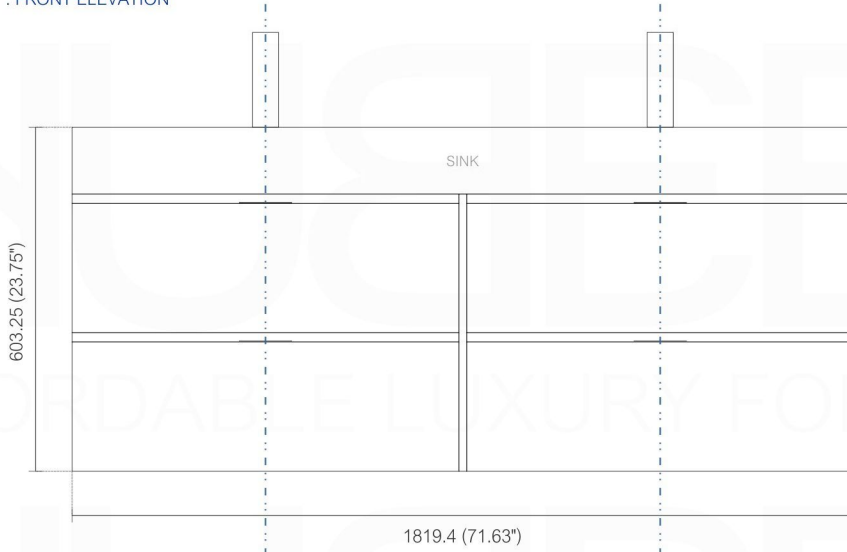
# BLISS BSL72

Sink: BSL72SINK

Dimensions:	width	depth	height
inches	71.63"	18.5"	23.75"
mm	1819	470	603

NOTE: DIMENSIONS AND TECHNICAL DETAILS ARE SUBJECT TO CHANGE WITHOUT NOTICE

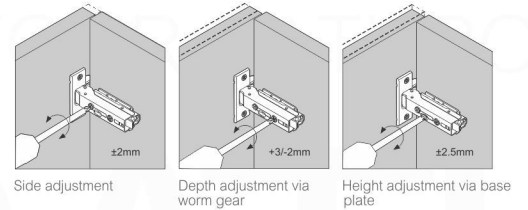
## FRONT ELEVATION



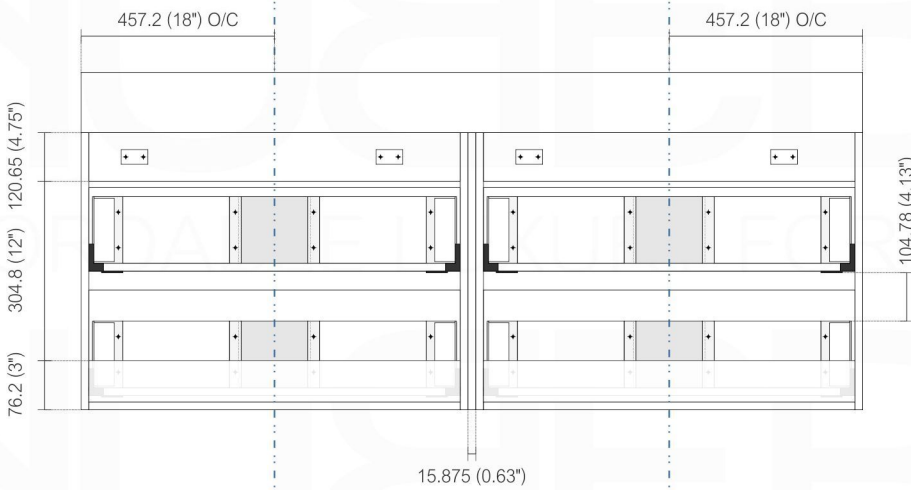
## Adjustments

The options for height adjustment depend on the type of base plate. All adjustments can be made independent of one another.

For depth adjustment, select base plates have worm gear adjustment access through the hinge arm.



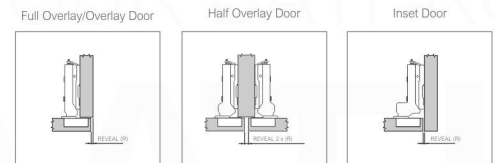
## BACK ELEVATION



## Reveal

The reveal (R) is the distance required between two doors or between the door and side wall of the cabinet to allow sufficient space for opening the door. The required reveal width (R) depends on the thickness of the door.

Most cabinet makers prefer a reveal (R) of between 3mm and 6mm.



## TOP ELEVATION

